



The First Year Experience

Community Update

February 2016
Vol. 4 Issue 6

Cornerstone Faculty Feature



What do you enjoy most about teaching the Cornerstone Experience course?

I enjoy the fresh perspective of incoming students. I'm always hearing something new; some way I hadn't thought about before; a different approach to something. I consider myself a lifelong learner, so learning and thinking in new and different ways is essential to that. And it's not just book learning. It's the social interaction of sharing ideas. I participate in the discussions the students have in class to hear their thinking and sometimes to encourage further thinking on the idea. I use the fresh ideas in other classes then, capitalizing on that perspective and sharing it with even more students.

Why did you choose to teach SLS 1515?

The main course I teach at FSW is Reading for College Success. I added SLS 1515 to my teaching in order to better understand the motivation within these new college students. I want to share the energy, enthusiasm, and curiosity involved in being a new college student with all the students I teach by infusing it into the other college coursework. That energy should be contagious! I want to help those who are struggling with the motivation, with the balance, to gain the confidence to keep moving forward.

How did the course change you?

I've talked in my previous classes about learning styles, personality types, study skills, etc., but only on the surface. This course allows the students to dig deeper into those areas and really apply their learning to what they're doing right now in college and in the workplace. It's very practical, very immediate material. I hope I'm helping them to make some of these transitions, as the course reminds me of what were sometimes difficult life transitions for many of us.

Karen Maguire

Professor of Reading
and Cornerstone Experience



Critical Thinking in Careers Lecture Series

Last fall over 800 participants enjoyed the “Critical Thinking in Careers” lecture series. The series includes speakers from the community as well as FSW faculty and administration. This semester students have experienced three fantastic speakers and are looking forward to six more sessions. Attached, please find the complete Spring 2016 lecture series flyer. Below, you’ll find participant survey data from the lecture series.



Mr. Don Abbott

90% of surveyed student participants “strongly agreed” and “agreed” that the topic was interesting and informative.



Student Comment

“The topic was very interesting! The lecture was not like a typical lecture, it was actually really cool. The lecture was an eye opener and showed me different ways of thinking about things.”

-Student comment from the Critical Thinking in the Natural Sciences lecture

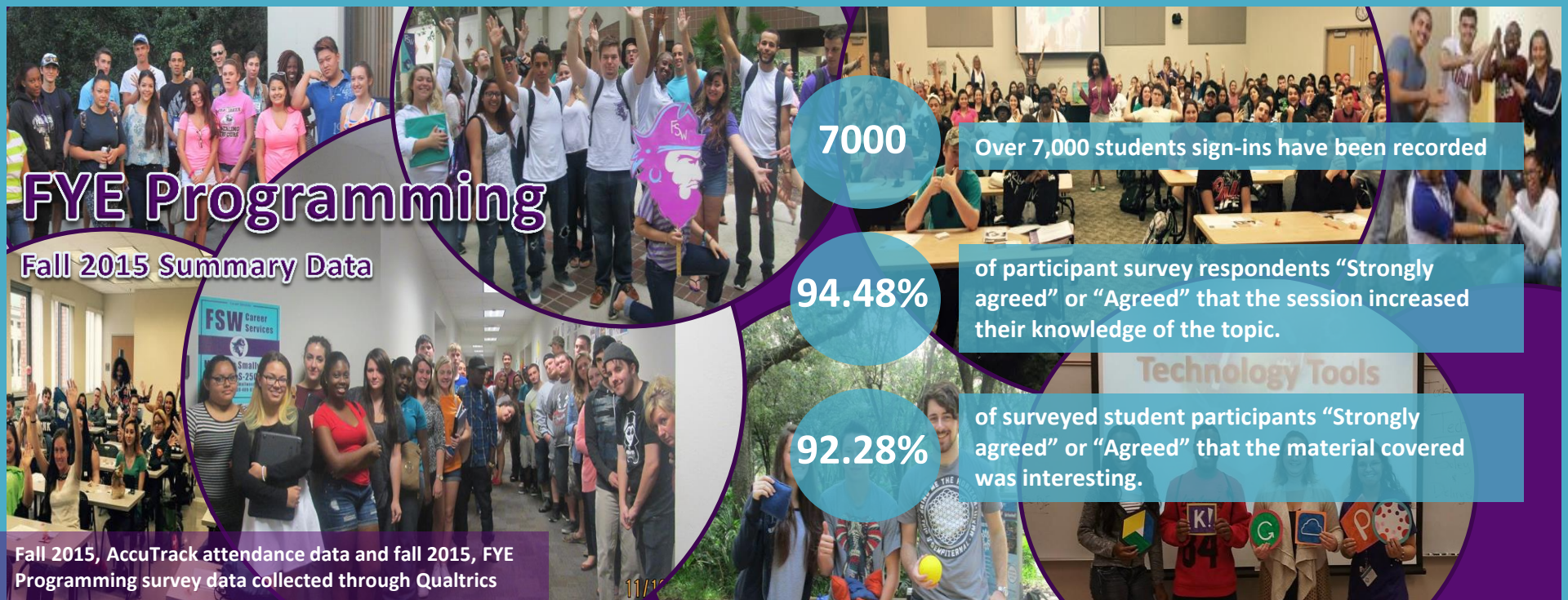
88% of surveyed student participants “strongly agreed” and “agreed” that this event is part of what a college or university should offer its students and community.



“I enjoyed the insights in how thinking differently can change the world around us.”
- Student survey comment



Dr. Lou Traina



FYE Programming

Fall 2015 Summary Data

7000

Over 7,000 students sign-ins have been recorded

94.48%

of participant survey respondents "Strongly agreed" or "Agreed" that the session increased their knowledge of the topic.

92.28%

of surveyed student participants "Strongly agreed" or "Agreed" that the material covered was interesting.

Fall 2015, AccuTrack attendance data and fall 2015, FYE Programming survey data collected through Qualtrics

Peer Architects

Fall 2015 Summary Data

94.81%

of instructors are "Very satisfied" or "Satisfied" with their Peer Architect modeling positive behavior and being a good role model.

94.93%

of Cornerstone survey respondents stated that overall their Peer Architect was "Very helpful" or "Helpful."

Student Comment

It's like having an older sibling showing you the ropes. The Peer Architects are always there to help and can easily direct you to the expert. Hands down the most useful resource FSW has to offer!

Faculty comments

The PA program is a benefit for students and professors. The program provides the needed bridge between a student's first year experience in college and the professor who expects the student to walk in prepared to learn.