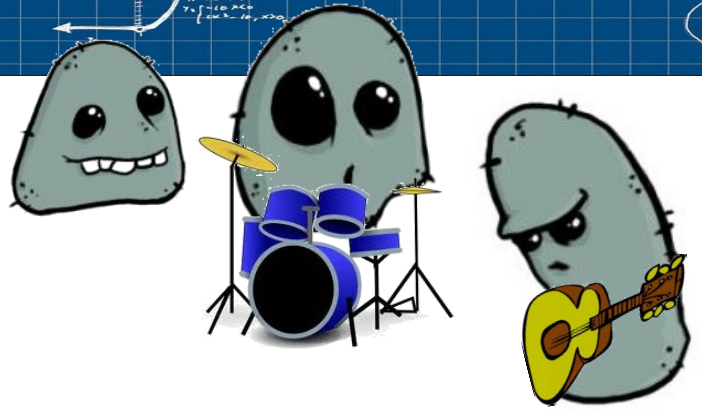


ROCKS!



Rock Diver

Preparing for the Event

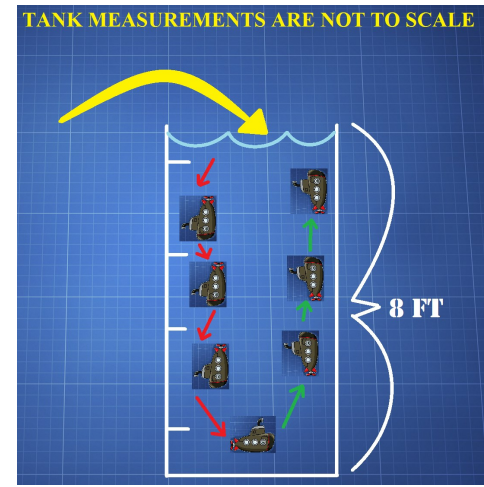
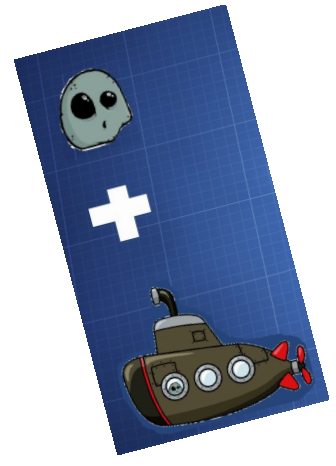
Planning for (and learning from) failure is a powerful skill. As you select rocks, strategy, and assemble your build kit, be sure to consider what will go wrong and include items that give you multiple options. Consider doing some practice runs before you arrive as the course will be crowded.

The Challenge:

You will build a device to hold or simply package your rock to survive a fall through a drop chute and into a minimum of 3 feet of water.

Points are awarded for how deep it submerges.

Triple the points will be awarded based on the distance the device then floats back up on its own.



Fast Facts:

- Device will fall through a 12 x 12 inch guide tube
- Height from drop site to bottom of the tank = 16 feet
- Water depth will be a minimum of 3 feet
- Submerging distance and floating distance will be measured to determine points awarded