

WHAT TO BRING

**Before you start packing, remember:
you don't need to bring everything you own.**

Your dorm room is your home away from home, but space is limited, and you'll be sharing it. Focus on essentials, comfort, and things that make you feel at home without overcrowding your space.

LAUNDRY/CLEANING



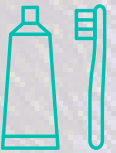
- Laundry basket or bag
- Detergent & dryer sheets
- Stain remover
- Disinfecting wipes
- Small cleaning spray
- Broom/ Mop
- Vacuum
- Paper towels
- Sponges
- Toilet bowl brush

LIVING/SLEEP



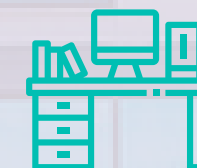
- Full size bedding
- Comforter/blanket
- Pillows & pillowcases
- Mattress protector
- Fan
- Storage bins
- Photos or small decorations
- TV

PERSONAL CARE



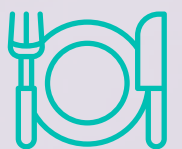
- Shower curtain/rings
- Personal Toiletries
 - (shampoo, soap, toothbrush, etc.)
- Hair tools
- First aid kit & any medications
- Bath Mat

SCHOOL SUPPLIES



- Backpack
- Notebooks, folders, pens
- Laptop & charger
- Desk lamp
- Sticky notes, index cards
- Power strip & extension cord
- Printer

KITCHEN



- Dishes
 - (bowl, plate, cups, eating utensils)
- Cooking Utensils
- Reusable Water bottle
- Dish soap & sponge
- Pots & Pans
- Water Jug & Filter
- Coffee Maker
- Dish towels
- Trash can/ Trash bags

WHAT **NOT** TO BRING

To keep our residence halls safe, comfortable, and clutter-free, there are certain items you should leave at home.

Many common household items are either not allowed due to fire safety regulations or simply won't fit in your limited living space.

Before you start loading up the car, double-check this list to avoid bringing things you won't be able to use or store in your dorm.

FLORIDA
SOUTHWESTERN
STATE COLLEGE

- All Firearms (including handguns, rifles, pellet guns, BB guns, paintball guns, etc.)
- All other weapons (including swords, bow and arrows, slingshots, martial arts weapons, hunting knives, etc.)
- Alcohol, Drugs, and Illegal substances
- Power tools or other heavy duty equipment
- Fireworks and any other type of explosives
- Pets as defined in the Florida Southwestern State College Residential Living Guide
- All grills
- Flammable liquids
- Combustible materials
- Toaster ovens
- Coffee makers that do not have automatic shut off
- Hotplates
- Deep fryers
- Candles/incense/ oil lamps
- Mini fridge that exceeds 5 cubic feet
- halogen lamp/ tulip lighting
- Portable A/C units & space Heater
- Extension cords (only UL approved surge protectors with a built-in circuit breaker are permitted)
- Additional Furniture (bed, water bed, couches, desks etc.)
- Amplified sound instruments
- Wall paint/ spray paint
- Large nails, screws, or anything that could/would damage walls
- Potted plants
- Electric scooters