

# 2013 Fact Book

# ENLIGHTEN

Published by the Office of Institutional Research

**General Information**

History of the College 4  
 Chronological Highlights 5  
 Accreditations 6  
 Purpose & Mission 7  
 Campus Maps 8

**Administration and Faculty**

Board of Trustees 12  
 President of Florida SouthWestern State College 13  
 Administration 14  
 Florida SouthWestern State College Organizational Chart 16  
 Academic Affairs Organizational Chart 17  
 Institutional Advancement Organizational Chart 18  
 Administrative Services Organizational Chart 19  
 Student Affairs and Enrollment Management Organizational Chart 20  
 Research, Technology, and Accountability Organizational Chart 21  
 Foundation Board 22  
 Faculty & Staff 23

**Enrollment**

Historical Enrollment 25  
 Fall Enrollment Executive Summary 26  
 Spring Headcount & FTE Enrollment 27  
 Summer Headcount & FTE Enrollment 28  
 Fall Headcount & FTE Enrollment 29  
 Fall Enrollment by Full-Time and Part-Time 30  
 Fall Enrollment by Residency Status 31  
 Fall Enrollment by Ethnic Group 32  
 Fall Enrollment by Gender and Age 33  
 Development and EAP Enrollment 34  
 Dual Enrollment 36  
 Fall Enrollment by Primary Major 37

**Enrollment by Location**

Fall Enrollment by State of Origin	39
Fall Enrollment by State of Origin (map)	40
Fall Enrollment by County of Origin	41
Fall Enrollment by County of Origin (map)	42

**Credit Hours**

Spring Breakdown of Credit Hours	43
Summer Breakdown of Credit Hours	44
Fall Breakdown of Credit Hours	45

**Academic Achievement**

Degrees Offered	46
Degrees Conferred	47

**Institutional Information**

Libraries	51
-----------	----

Florida SouthWestern State College was formally established in 1961 by the Florida Legislature as Edison Junior College. In 1965, the main campus was established on 80 acres in Fort Myers. Edison received accreditation from the Commission on Colleges of the Southern Association of Colleges and Schools (SACSCOC) in 1966. Since this initial accreditation, the College has undergone reaffirmation in 1971, 1981, 1991, 2001, and 2013. Accreditation at Level II membership was granted in 2005, and continued in 2007 following a site visit.

Edison Junior College was renamed Edison Community College in 1972 as a reflection of its expanded mission, and opened centers in Collier and Charlotte counties that same year. The College's service area represents tremendous diversity in both geography and economy. The Gulf Coast counties of Lee, Charlotte and Collier have experienced explosive population growth. In contrast, Glades and Hendry counties to the east remain rural, agrarian communities dependent on cattle and sugar cane production. Aligned with area growth, the College opened two permanent campuses, the Collier Campus in Naples and the Charlotte Campus in Punta Gorda. In 2009, the College moved into a 19-acre facility in La Belle known as the Hendry/Glades Center.

In 2001, the Florida Legislature authorized community colleges to offer limited baccalaureate degrees in areas of workforce need. Edison re-evaluated its mission statement and in 2006 enrolled 13 students into the Bachelors of Applied Science in Public Safety and Management program. In August 2008, following the creation of the new State College System and to support the College's addition of baccalaureate programs, the District Board of Trustees approved the name Edison State College. The mission of Florida SouthWestern State College reflects a commitment to all levels of educational attainment, our students, faculty and staff, and the community that we have served for over 50 years. The College now offers ten baccalaureate programs.

In 2013, the proposal for the new name, Florida SouthWestern State College, was brought before the college's District Board of Trustees for review and approval. In September of 2013, they unanimously approved the name. From there, the process began to seek legislative approval for the new name. Governor Rick Scott signed the bill in May and it became law July 1, 2014. The Lee Campus in Fort Myers was renamed the Thomas Edison Campus. Starting in Fall 2015, the Florida SouthWestern State College Buccaneers will return to competition with softball and baseball teams.

2013

- Edison announces \$10K Bachelor's degrees in Secondary Biology Education and Middle Grades Science Education, in response to Governor Rick Scott's challenge to all colleges, April
- Governor appoints Tristan Chapman and reappoints Julia Perry to serve on the college's District Board of Trustees, February
- The fifth annual GreenFest is held on the Collier Campus, March
- Two Edison students are elected President and Vice President of the Florida College System Student Government Association, a historic first, April
- Edison Collegiate High School, Charlotte Campus, holds its first graduation, May
- Edison State is reaffirmed by the Commission on Colleges of the Southern Association of College and Schools (SACSCOC) Board of Trustees, June
- District Board of Trustees approves name change to Florida SouthWestern State College, September

2014

- Florida Senate and House sub-committees approve name change to Florida SouthWestern State College, May
- Town Hall meetings are held for input on Buccaneer's logo, January
- Governor Rick Scott appoints Byron Donalds and Eric Loche, and reappoints Braxton Rhone and Chris Vernon to the college's District Board of Trustees, February
- Carl McAloose is named Director, Intercollegiate Athletics, January
- Edison students elected President and Vice President of the Florida College System Student Government Association for the second consecutive year, April
- Edison State College holds its final commencement ceremony under the Edison name, May
- Edison Collegiate High School, Lee Campus, holds first graduation ceremony, May
- College celebrates FSW Spirit Day to commemorate its new name, July

Florida SouthWestern State College is accredited by the Commission on Colleges of the Southern Association of Colleges and Schools to award associate and baccalaureate degrees. Contact the Commission on Colleges at 1866 Southern Lane, Decatur, Georgia 30033-4097 or call (404) 679-4500 for questions about the accreditation of Florida SouthWestern State College.

The three-fold purpose for publishing the Commission’s address and contact number is to enable interested constituents:

1. To learn about the accreditation status of Florida SouthWestern State College;
2. To file a third-party comment at the time of Florida SouthWestern State College’s decennial review; or
3. To file a complaint against Florida SouthWestern State College if there is evidence to support the institution’s significant non-compliance with a requirement or standard.

Normal inquiries about Florida SouthWestern State College, such as admission requirements, financial aid, educational programs, etc., should be addressed directly to Florida SouthWestern State College and not to the Commission's office.

In addition to accreditation by the Commission on Colleges of the Southern Association of Colleges and Schools, nine Florida SouthWestern State College programs are accredited by one of the following agencies.

- Cardiovascular Technology (AS): Commission on Accreditation of Allied Health Education Programs (CAAHEP) in conjunction with the Joint Review Committee in Cardiovascular Technology
- Dental Hygiene (AS): Commission on Dental Accreditation (CODA)
- Emergency Medical Services Technology (AS): Commission on Accreditation of Allied Health Education Programs (CAAHEP) in conjunction with the Committee on Accreditation of Educational Programs for the Emergency Medical Services Professions (CoAEMSP).
- Nursing (AS and BS): Accreditation Commission for Education in Nursing (ACEN)
- Radiologic Technology (AS): Joint Review Committee on Education in Radiologic Technology (JRCERT)
- Respiratory Care (AS): Commission on Accreditation for Respiratory Care (CoARC)
- Health Information Technology (AS): Commission on Accreditation for Health Informatics and Information Management Education (CAHIIM)
- Paramedic Certificate: Commission on Accreditation of Allied Health Education Programs (CAAHEP) in conjunction with the Committee on Accreditation of Educational Programs for Emergency Medical Services Professions (CoAEMSP)

Co-curricular

- Physical Therapy Assistant (AS): Commission on Accreditation in Physical Therapy Education (CAPTE) (via Inter-institutional agreement with Broward College)

## VISION

Florida SouthWestern State College will be the catalyst for creating an innovative education system which provides accessible educational pathways that prepare students to be enlightened and productive citizens.

(Vision statement approved by the District Board of Trustees April 27th, 2010)

## VALUES

We value student success, integrity, intellectual inquiry, and academic rigor.

(Values statement approved by the District Board of Trustees April 27th, 2010)

## MISSION

The mission of Florida SouthWestern State College is to inspire learning; prepare a diverse population for creative and responsible participation in a global society; and serve as a leader for intellectual, economic, and cultural awareness in the community.

(Mission statement approved by the District Board of Trustees April 27th, 2010)

## STRATEGIC DIRECTIONS

### ENHANCING THE COLLEGE EXPERIENCE

- focusing recruiting and admissions efforts
- creating a robust residential life experience on Lee to support our residence hall
- exploring the potential return of athletics as a component of student life / residential life
- increasing scholarly activity vis-à-vis the creation of a sponsored programs office
- expanding international education
- providing efficient processes that enhance or improve student, faculty and staff overall experience with the college

### INCREASING COMMUNITY CONNECTIONS

- exploring new workforce-related certificate and degree offerings including additional \$10,000 degree options
- funding new initiatives that hold promise for FSW
- emphasizing the arts as a community resource
- refocusing the direction for the FSW Foundation and enhancing its role in the college
- increasing service area coverage through regional vice presidents for economic and community development
- assessing and responding to regional workforce needs

(Submitted to the Florida SouthWestern State College Board of Trustees July, 2014)

Map Key	
Walker Hall.....	Humanities Hall/
Medical Museum of History.....A	Bob Rauschenberg Gallery.....L
Nursing Building.....AA	BB Mann Performing Arts Hall.....M
Gresham Hall.....B	Royal Palm Hall.....N
Gresham Annex.....C	Sabot Hall.....O
White Hall.....D	Arca Hall.....P
Physical Plant-Central.....DD	Howard Hall.....Q
Facilities Annex.....E	Physical Plant-West.....R
Shipping and Receiving.....F	Tarell Student Services Hall.....S
Presidio Information.....	Edison Collegiate High School-Loc.....T
Technology Center.....G	Classroom Building.....U
Leonhardt Hall.....H	Lockmiller Child Development Center.....V
Robinson Hall.....I	Lighthouse Commons.....W
Rush Library.....J	Foundation & Alumni Center.....Z
Hendry Hall.....K	



Thomas Edison Campus  
 8099 College Parkway • Fort Myers, Florida 33919  
 (239) 489-9300  
[www.FSW.edu/lee](http://www.FSW.edu/lee)





Charlotte Campus  
26300 Airport Road • Punta Gorda, Florida 33950  
(941) 367-5629  
[www.FSW.edu/charlotte](http://www.FSW.edu/charlotte)



#### Map Key

Peoples Learning Resources.....	B	Spitz Hall.....	J
Classroom Building.....	C	Collegiate High School.....	K
Classroom Building.....	D	Central Physical Plant.....	L
Jones Hall.....	B	Maintenance Building.....	M
Moore Observatory.....	F	Physical Plant Building.....	N
Yarger Science Hall.....	G	Student Activities Building.....	O
Faculty Building.....	H		





**Collier Campus**

7007 Lely Cultural Parkway • Naples, Florida 34113  
 (239) 732-3700  
[www.FSW.edu/collier](http://www.FSW.edu/collier)

Rattlesnake Hammock Road



Map Key	
Administration.....M	Business & Technology Center.....J
Admissions & Student Services.....M	Plant Operations.....H, I
Cashier.....M	NCEF Early Childhood Development Center.....K
Auditorium.....B	NCEF Pediatric Dental Center/ UF College of Dentistry.....L
Book Store.....M	Allen & Marla Weiss Health Sciences Hall.....N
Cafeteria.....C	Public Safety.....A
Student Center.....D	Student Life.....A
Library.....G	Career Services.....A
Classrooms.....A, B, E, F, G, I, N	ESC Foundation Office.....M
Computer Laboratory.....A, G	
Academic Success Center.....J	
Faculty Offices.....E, F, N	

Collier Boulevard CR 951



	Major Intersection
	Bus Stop
	Open Parking
	Other Parking

Lely Cultural Parkway

Grand Lely Drive



Hendry Glades Center  
1092 E. Cowboy Way • LaBelle, Florida 33935  
(863) 674-0408  
[www.FSW.edu/hendryglades](http://www.FSW.edu/hendryglades)



#### Map Key

Admissions & Student Services.....A  
Classroom.....B

**P** Open Parking

**P** Other Parking

Florida SouthWestern State College is governed by its District Board of Trustees composed of nine representatives from Charlotte, Collier, Hendry, Glades, and Lee counties. The first District Board of Trustees was appointed in 1968 by Governor Claude Kirk. The members are appointed to four-year terms by the Governor of Florida.

### Board of Trustees Members

Sankey “Eddie” Webb III, MBA, CPA, Charlotte County Chairman

Brian Chapman, Jr., B.A., Lee County Vice Chairman

Marjorie Starnes-Bilotti, J.D., Lee County Chairman

Tristan Chapman, MBA, Hendry County

Byron Donalds, B.S., Collier County

Eric Loche, B.A., Charlotte County

Julia G. Perry, B.A.E., Glades County

Braxton C. Rhone, B.S., Lee County

Christopher T. Vernon, J.D., Collier County



Dr. Jeffery Allbritten returned to Florida SouthWestern State College on July 31, 2012 as the College's Fourth President after being unanimously selected by the Board of Trustees on June 1, 2012. He served as President of Macon State College, Macon, GA from 2011 - 2012.

During his tenure as the president of the Collier Campus of Edison State College from 2003 - 2011, Dr. Allbritten successfully expanded enrollment and course offerings, as well as the campus itself. Working diligently to cultivate community and corporate partnerships, Dr. Allbritten was instrumental in the expansion of campus facilities to accommodate innovative programming. In 2008, the University of Florida NCEF Pediatric Dental Center and the NCEF Early Childhood Development Center opened on the Edison State College Collier Campus. In 2010, ground was broken on two important facilities: The Student Services Building and the Allen & Marla Weiss Health Sciences Hall. These buildings opened in February 2012. Also in 2010, Dr. Allbritten advanced an application for the creation of a STEM (Science, Technology, Engineering, and Math) focused charter school to the Collier County School Board, which was unanimously approved.

Dr. Allbritten has been very active in the community, serving on a number of boards, including the Board of Directors for the former Economic Development Council of Collier County, the Greater Naples Chamber of Commerce and the German-American Business Chamber of Florida. He was an Advisory Board Member for Eden Florida and the Southwest Florida Holocaust Museum. He also served on the Editorial Board for *Business Currents* Magazine.

Prior to his appointment at the Collier County Campus of Edison State College, Dr. Allbritten was the director of Pines Center Campus of Broward College, a comprehensive community college serving Broward County in southeast Florida, from 2000-2003.

Dr. Allbritten served as dean of Liberal Arts and Sciences at Florida State College at Jacksonville, the second largest college in Florida with 80,000 students, from 1999 to 2000. Prior to his arrival in Florida, he was associate dean of the College of Basic and Applied Sciences at Middle Tennessee State University, Murfreesboro, from 1995 to 1999.

Dr. Allbritten holds a Doctor of Arts degree in chemistry from Middle Tennessee State University, Murfreesboro, a master of science degree in mathematics from Murray State University, Murray, KY, and a bachelor of science degree in chemistry, also conferred by Murray State University.

**President's Office**

Dr. Jeffery Allbritten	President
Dr. Henry Peel	Chief of Staff
Dr. Patricia Land	Regional Vice President, Economic & Community Development/Charlotte Campus President
Dr. Robert Jones	Regional Vice President, Economic & Community Development/Collier Campus President
Mr. Matthew Holliday	Director, Governmental Relations
Mr. Mark Lupe	General Counsel

**Academic Affairs**

Dr. Denis Wright	Provost and Vice President for Academic Affairs
Dr. Laura Weir	Assistant Vice President for Academic Affairs
Dr. Eileen DeLuca	Assistant Vice President for Academic Affairs
Dr. Emery Alford	Dean, School of Arts, Humanities, and Social Sciences
Dr. Theo Koupelis	Dean, School of Pure and Applied Sciences
Dr. John Meyer	Dean, School of Business and Technology
Dr. Erin Harrel	Dean, School of Education
Dr. Marie Collins	Dean, School of Health Professions
Dr. Mary Myers	Dean, Division of Teaching Innovation, Faculty Development and Online Learning
Mr. William Shuluk	Head Librarian, Libraries
Ms. Michelle Fanslau	Associate Dean, Baccalaureate Programs and Academic Services
Mr. Jeff Gibbs	Director, Hendry Glades Center
Mr. Garnett Salmon	Registrar
Ms. Monica Moore	Director, Academic Support Programs
Ms. Cat Fuller	Director, International Education
Ms. Lynne Crandall	Director, Simulation Education
Mr. Robert Anderson	Director, Online Learning, Teaching and Innovation
Ms. Melissa Rizzuto	Director, Faculty Development and Training
Ms. Jade Dellinger	Director, Rauschenberg Gallery
Ms. Wendy Athens	Director, Design and Development

**Advancement**

Dr. Louis Traina	Vice President, Institutional Advancement and Executive Director of the Foundation
Ms. Teresa Morgenstern	Director, Communications and Public Information Officer
Mr. Kevin Miller	Senior Director, Administration and Development
Mr. Paul Bova	Senior Director, Development
Ms. Arlene Knox	Senior Director, Development
Ms. Rio DeArmond	Director, Alumni Relations
Dr. Joseph Kramp	Director, Development
Ms. Nina Gray	Director, Development, PT

**Administrative Services**

Dr. Gina Doeble	Vice President, Administrative Services
Mr. Tobias Discenza	Assistant Vice President, Financial Services
Mr. Dwain Keddo	Bursar
Ms. Kathleen Porter	Controller
Ms. Debra Kivel	Director, DSO Finance
Ms. Judy Pultró	Director, Auxiliary Services
Ms. Catherine Morgan	Director, Student Financial Aid
Mr. Richard Parfitt	Director, Public Safety
Mr. Steve Nice	Director, Facilities Planning and Development
Mr. Justin Long	Director, Housing and Residence Life Operations
Vacant	Director, Human Resources
Ms. Mercy Gonzalez	Payroll Manager
Ms. Lisa Tudor	Director, Procurement Services

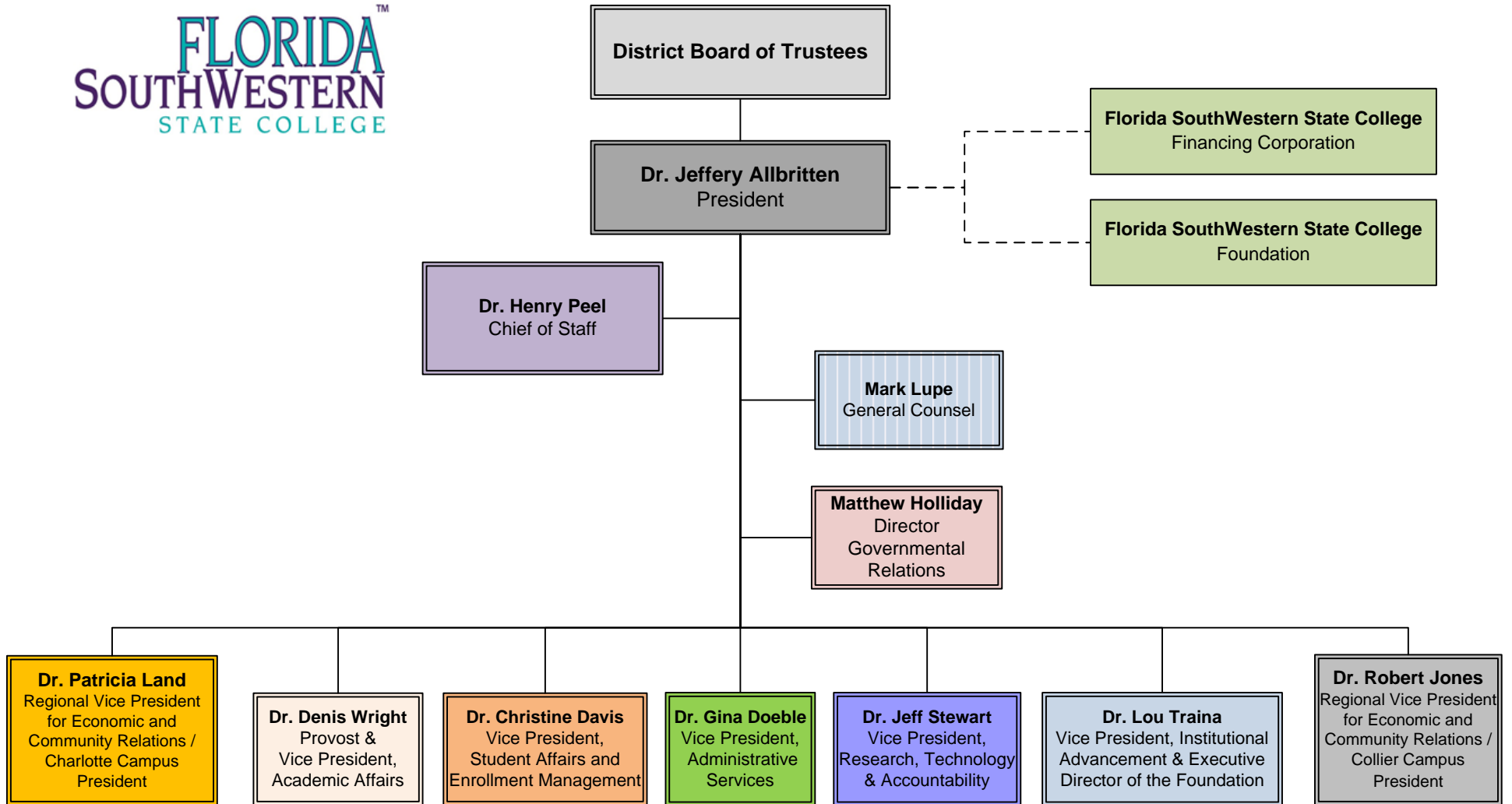
**Student Affairs**

Dr. Christine Davis	Vice President, Student Affairs and Enrollment Management
Dr. Waldon Hagan	Assistant Vice President, Student Affairs and Dean of Students
Ms. Laura Antczak	Assistant Vice President, Enrollment and Success
Dr. Kristi Rickman	Associate Dean, Student Affairs and Director of Campus Life
Ms. Cindy Lewis	Collier Campus Dean, Student Affairs and Academic Services
Dr. Christy Gilfert	Charlotte Campus Dean, Student Affairs and Academic Services
Mr. Mark Bukowski	Director, Admissions
Ms. Daphne Fernander	Director, Student Affairs Operations
Ms. Angela Hartsell	Director, Adaptive Services
Ms. Sarah Borland-Liekweg	Director, Student Support Services
Ms. Sylvia Carter	Director, Upward Bound
Ms. Denise Swafford	Director, Testing Services
Ms. Whitney Rhyne	Director, New Student Programs
Mr. Andrae Jones	Director, Academic Advising

**Research, Technology and Accountability**

Dr. Jeff Stewart	Vice President, Research, Technology and Accountability
Dr. Susan Hibbard	Director, Effectiveness and Accountability
Ms. Abby Willcox	Director, Institutional Research
Mr. Jason Dudley	Chief Information Officer, Information Technology and Enterprise Applications
Mr. Carl McAloose	Director, Intercollegiate Athletics

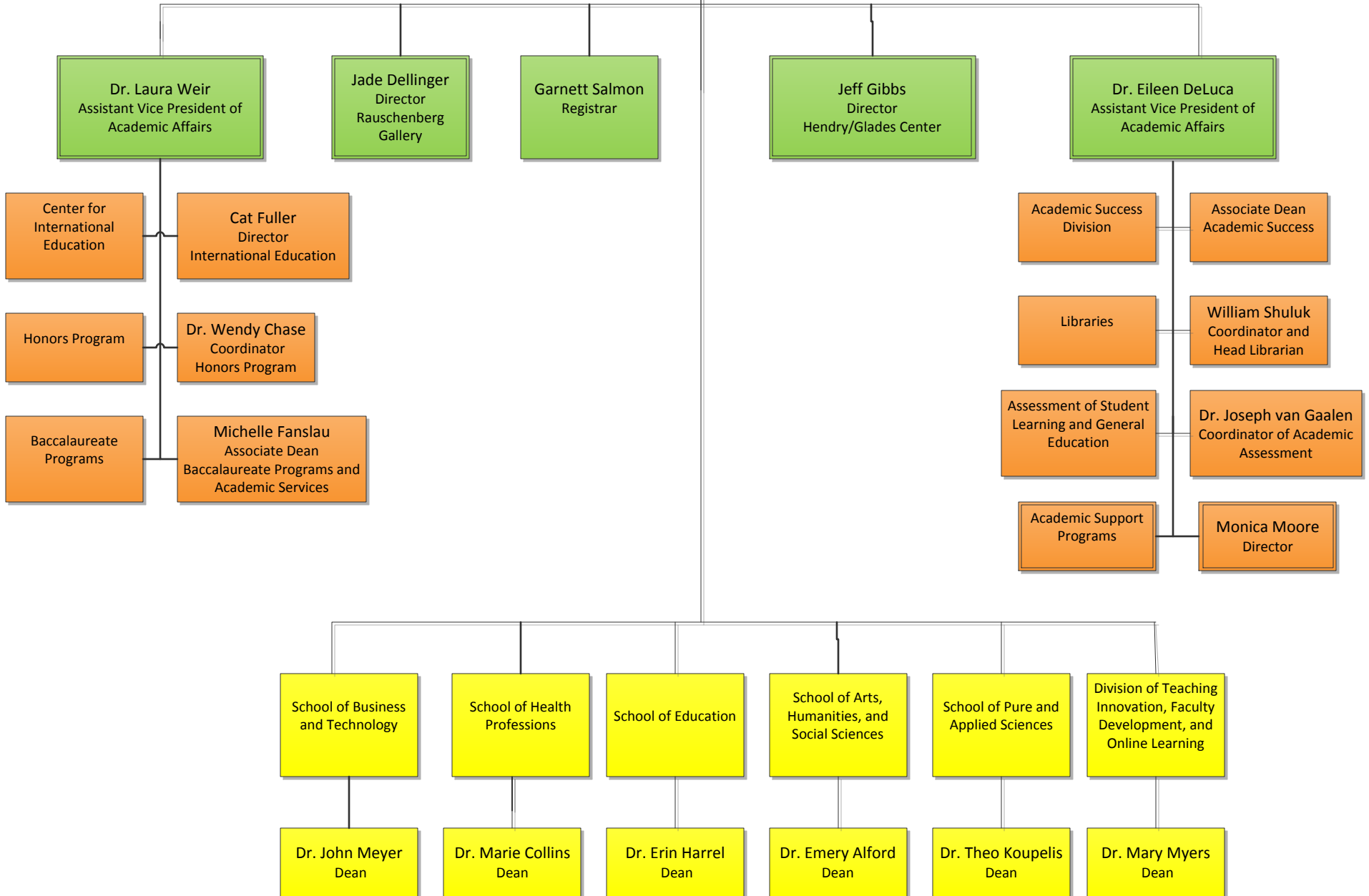
# Executive Leadership



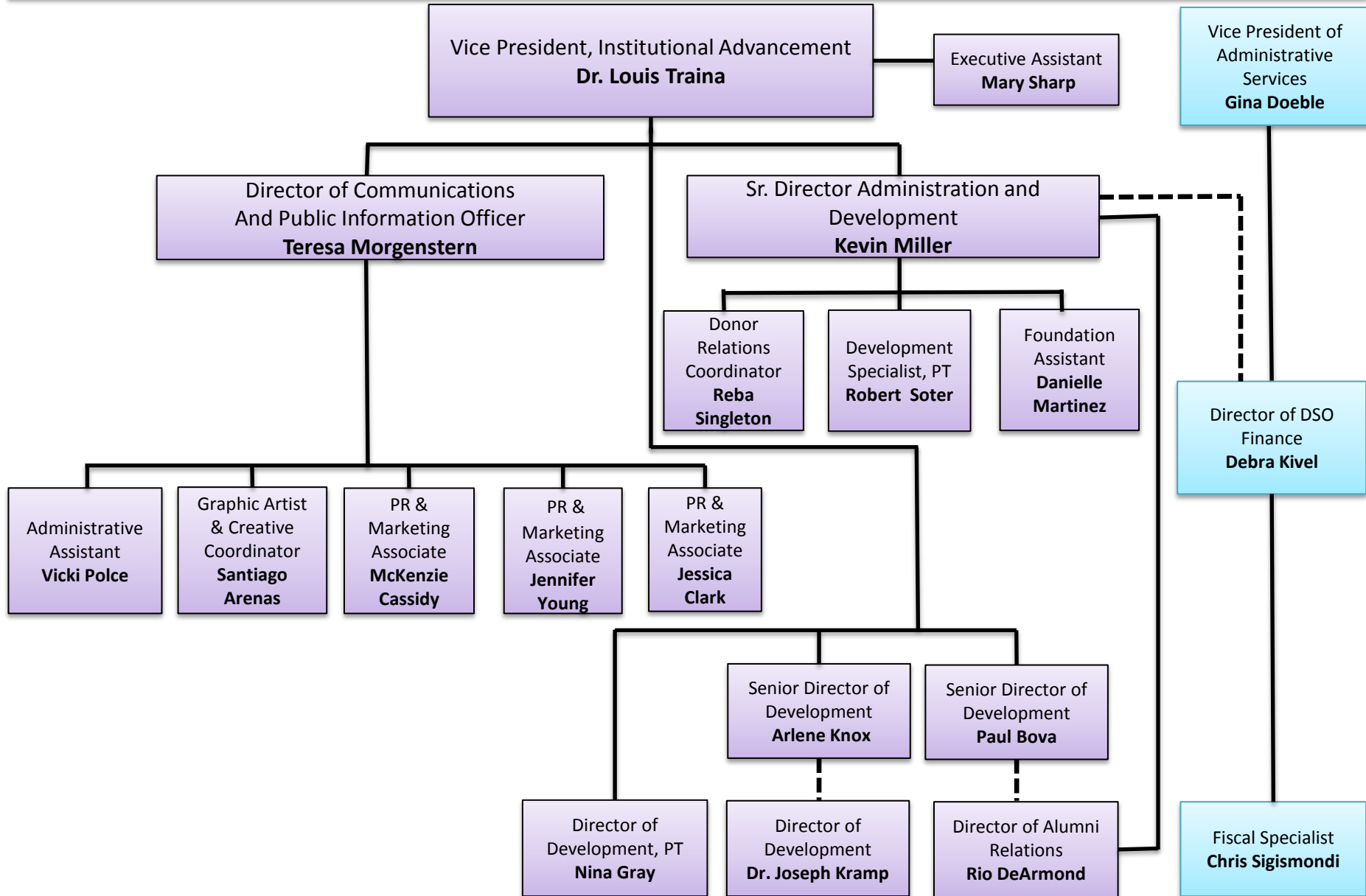


Academic Affairs  
Organizational Chart  
Summer, 2014

Dr. Denis G. Wright  
Provost and Vice President of Academic Affairs



# Florida SouthWestern State College Advancement Division Organizational Chart



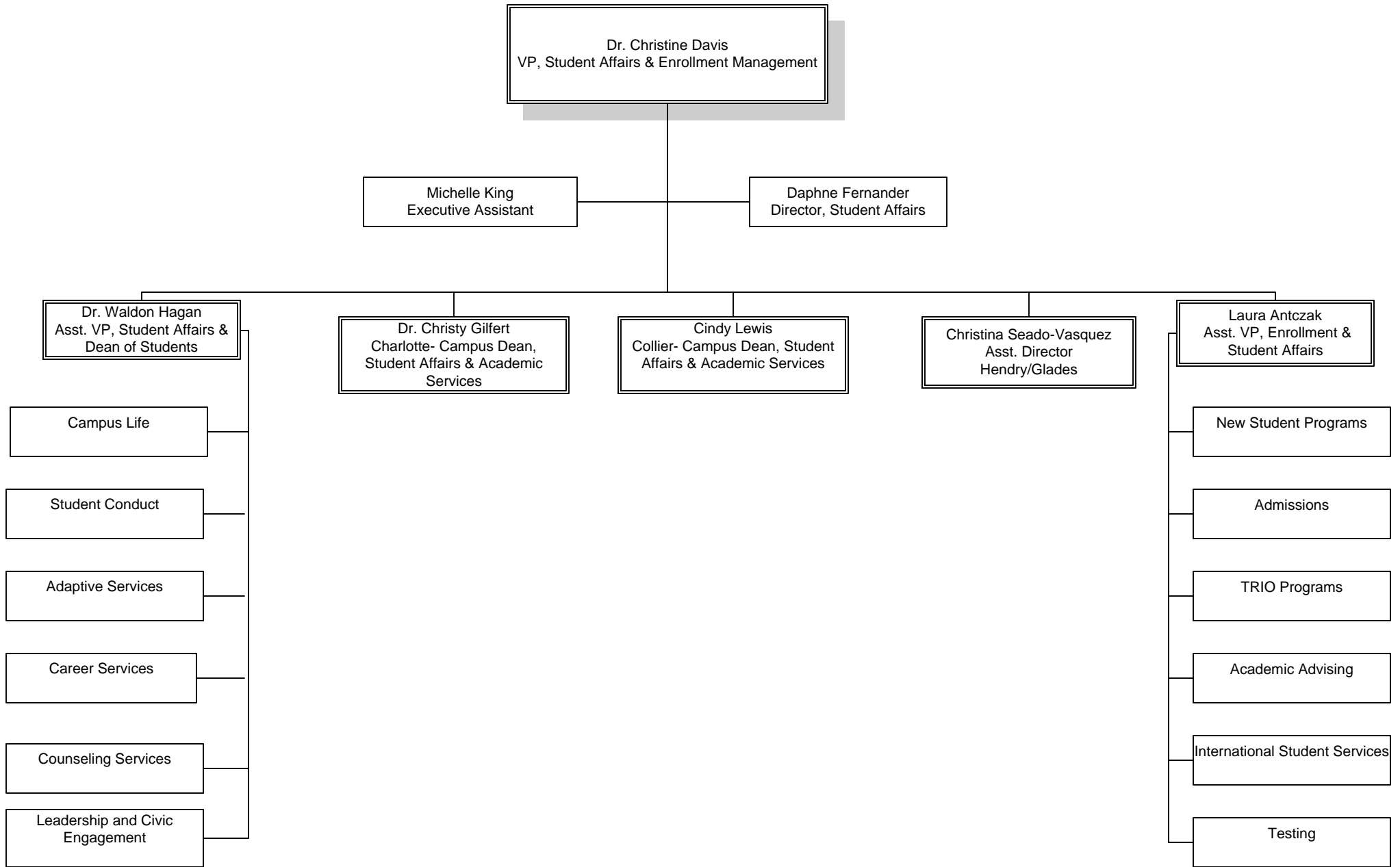
# ADMINISTRATIVE SERVICES



**Dr. Gina Doeble**  
Vice President,  
Administrative Services

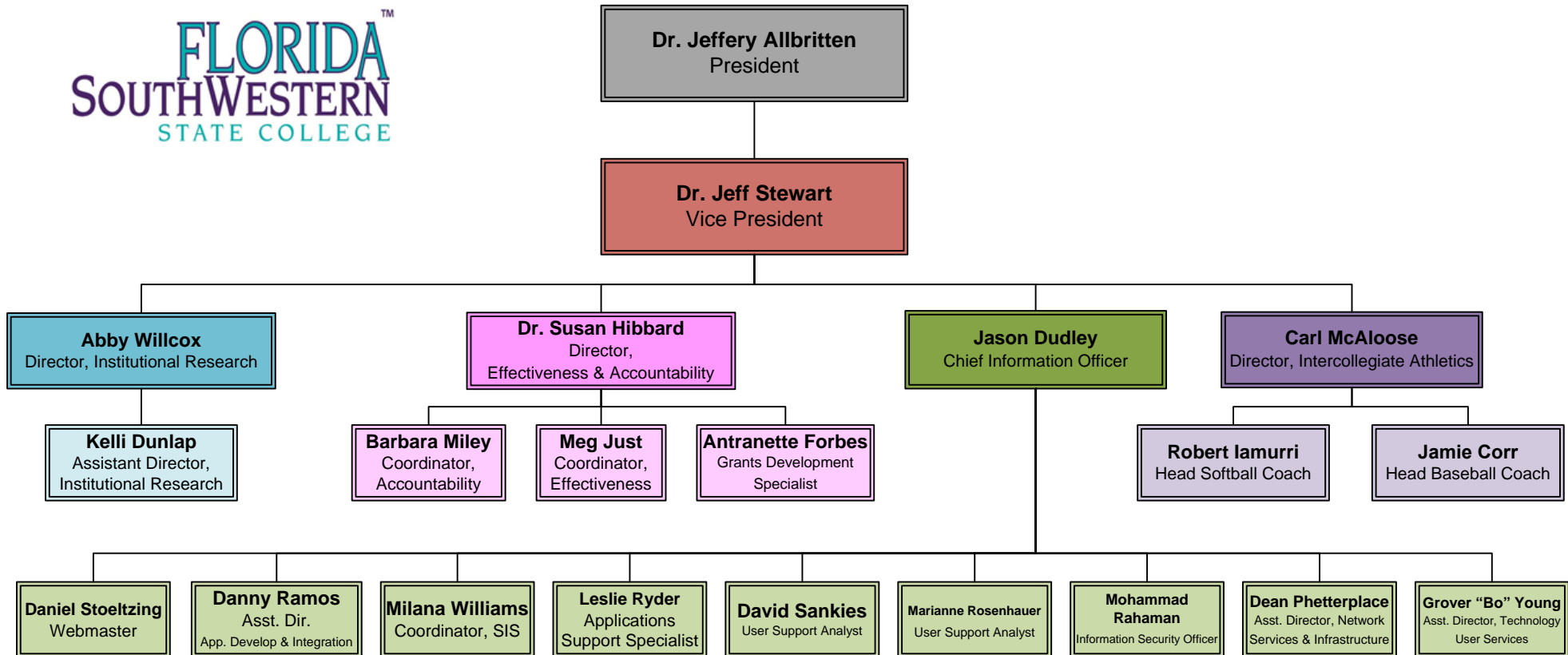
**Vicki Dryden**  
Executive Assistant





July 1, 2014

# Research, Technology, & Accountability



**Florida SouthWestern State College Foundation, Inc.**

**Executive Officers**

Tammy Surratt, Chairman  
Bruce Schultz, Vice Chairman  
Dilman Thomas, Treasurer  
Charlotte Miller, Secretary  
Marjorie Starnes-Bilotti, Board of Trustees Designee  
Gina Doeble, College Administration Representative  
Ellen Webb, Campus Co-Chairman  
Jim Nolan, Campus Chairman  
Carey Soud, Campus Chairman  
Andy Tilton, Campus Co-Chairman  
Alan Hiliker, Campus Chairman

**Directors**

Melissa Congress  
Cort Frohlich  
J. Dudley Goodlette  
Carl P. Grissom  
Marcia Hobe  
Anne Keesling  
Deanne B. Kyle  
Richard Lewis  
Duncan MacDonald  
Mary Lee Mann  
Richard A. Penix  
Jill Ciccarelli Rapps  
Mark Schlehr  
Victoria B. Stephan  
Deborah Stewart  
Jayne Young

**Honorary Lifetime Directors**

Bernese B. Davis  
Craig R. Folk  
Ann K. Gateff  
Susan C. Kyle  
Mavis Miller  
Beverly McNew  
Holland T. Salley  
John T. Seaman Jr.  
Madeleine Taeni  
Lynne Taylor

**Ex Officio**

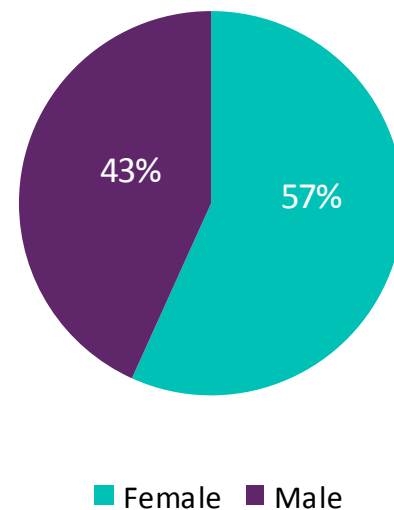
Dr. Jeffery S. Allbritten, College President  
Dr. Robert R. Jones, Vice President for Economic and Community Development  
Dr. Patricia Land, Vice President for Economic and Community Development

## Fall 2013 Full-Time Faculty and Staff Profile

	<u>n</u>
Primarily Instruction	170
Clerical/Secretarial	99
Executive/Administrative/Managerial	41
Other Professional	148
Service/Maintenance	33
Skilled Crafts	0
Technical/Paraprofessional	35
Other	0
<b>Total</b>	<b>526</b>

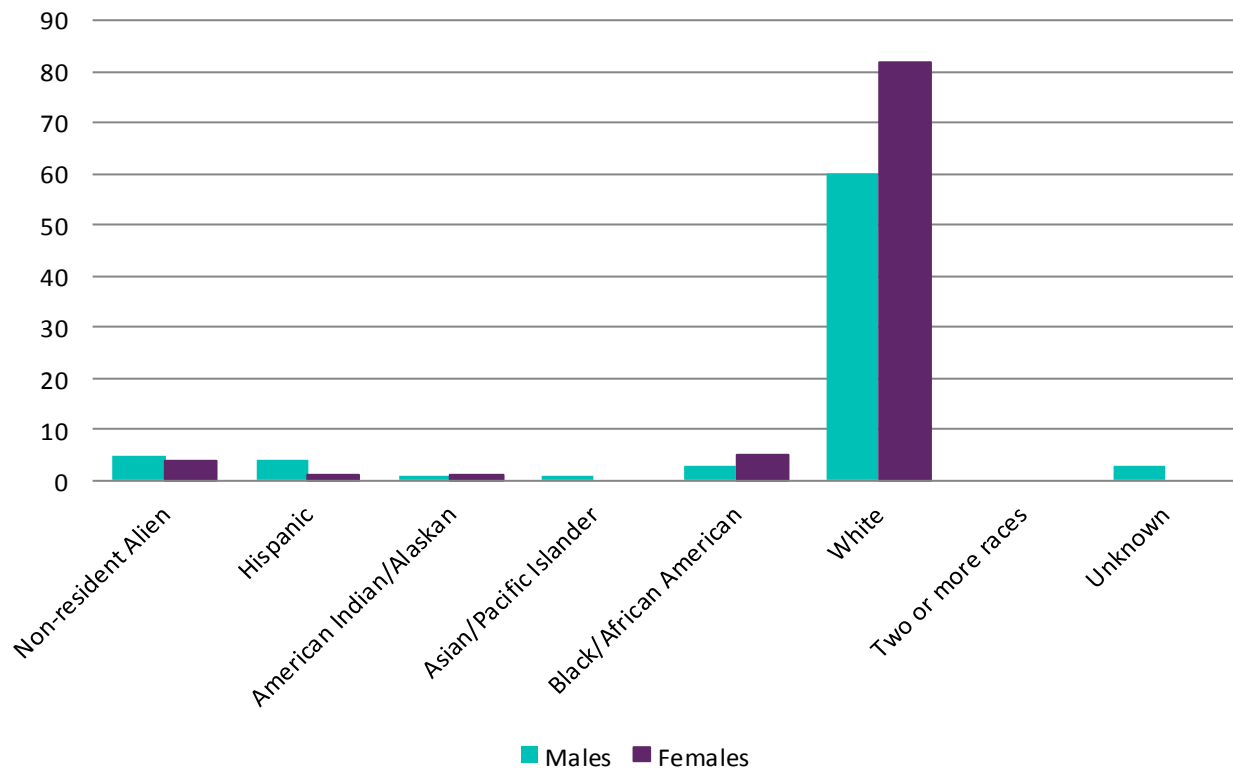
### Race/Ethnicity and Gender

Non-resident Alien	11
Hispanic/Latino	36
American Indian/Alaskan	4
Asian	7
Black/African American	34
Native Hawaiian/Pacific Islander	0
White	428
Two or more races	2
Unknown	4



## Full-time Instructional Faculty

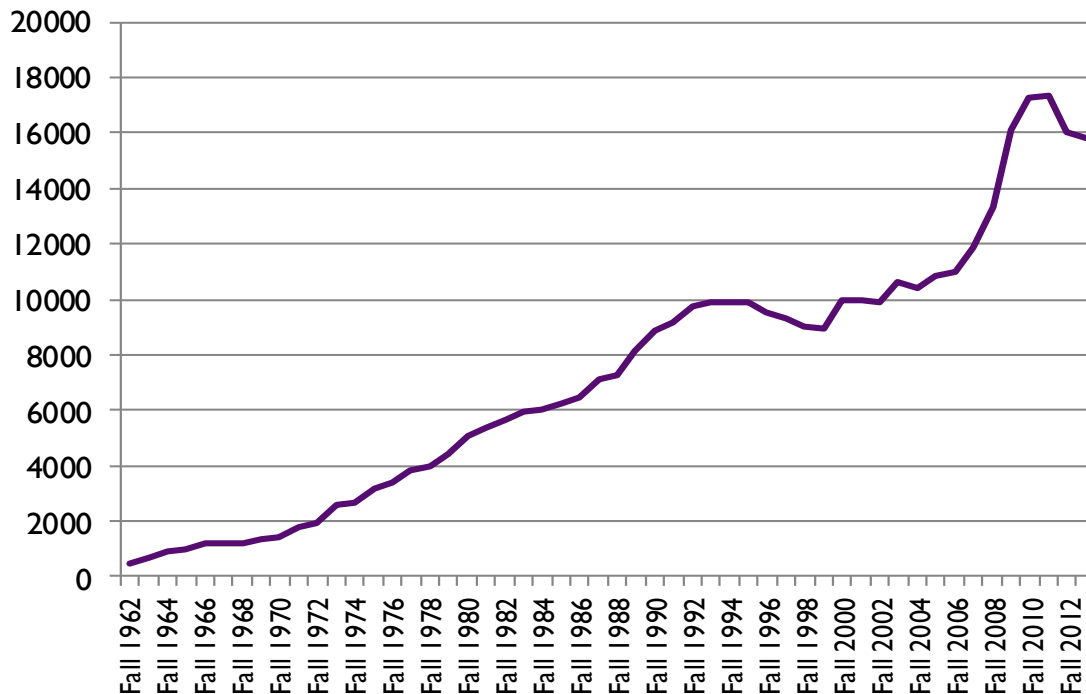
	Fall 2011	Fall 2012	Fall 2013	3 Year % Change
Female	96	96	93	-3.1%
Male	65	73	77	18.5%
Non-resident Alien	5	8	9	80.0%
Hispanic	5	6	5	0.0%
American Indian/Alaskan	1	1	2	100.0%
Asian/Pacific Islander	2	2	1	-50.0%
Black/African American	6	8	8	33.3%
White	141	142	142	0.7%
Two or more races	0	0	0	n/a
Unknown	1	2	3	200.0%





## Fall Historical Enrollment

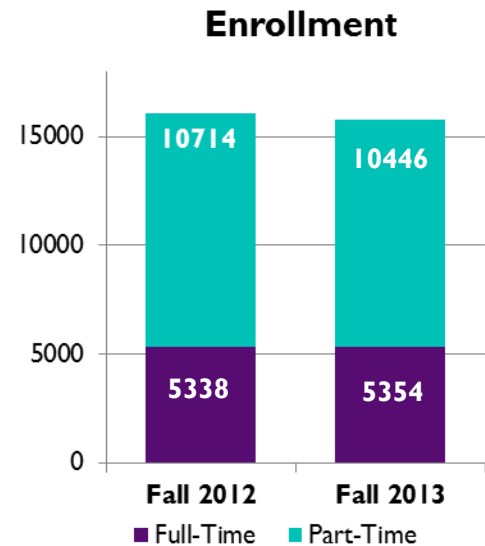
Term	Enrollment	Term	Enrollment	Term	Enrollment	Term	Enrollment
Fall 1962	498	Fall 1976	3379	Fall 1990	8907	Fall 2004	10383
Fall 1963	674	Fall 1977	3831	Fall 1991	9190	Fall 2005	10866
Fall 1964	940	Fall 1978	4009	Fall 1992	9740	Fall 2006	10964
Fall 1965	953	Fall 1979	4383	Fall 1993	9909	Fall 2007	11898
Fall 1966	1197	Fall 1980	5066	Fall 1994	9904	Fall 2008	13309
Fall 1967	1211	Fall 1981	5379	Fall 1995	9924	Fall 2009	16077
Fall 1968	1194	Fall 1982	5647	Fall 1996	9551	Fall 2010	17280
Fall 1969	1342	Fall 1983	5947	Fall 1997	9334	Fall 2011	17312
Fall 1970	1427	Fall 1984	6022	Fall 1998	9044	Fall 2012	16052
Fall 1971	1779	Fall 1985	6233	Fall 1999	8933	Fall 2013	15800
Fall 1972	1898	Fall 1986	6483	Fall 2000	8919		
Fall 1973	2623	Fall 1987	7088	Fall 2001	9057		
Fall 1974	2672	Fall 1988	7283	Fall 2002	9871		
Fall 1975	3154	Fall 1989	8171	Fall 2003	10641		



**Fall 2013 Enrollment**

Enrollment	Fall 2012		Fall 2013		Percent Change
	n	%	n	%	
Total	16052	100.0%	15800	100.0%	-1.6%
Full-Time	5338	33.3%	5354	33.9%	0.3%
Part-Time	10714	66.7%	10446	66.1%	-2.5%
FTE*	4685	---	4639	---	-1.0%

Credit Hour Production	Fall 2013		FTE* per Campus	Fall 2013
	n	%		
Total	139158	100.0%	Total	4639
Lee	75432	54.2%	Lee	2514
Collier	23239	16.7%	Collier	775
Charlotte	13905	10.0%	Charlotte	464
Hendry/Glades	3491	2.5%	Hendry/Glades	116
Edison Online	23091	16.6%	Edison Online	770



Gender and Race/Ethnicity	Hispanic	Amer Ind/ Nat Alask	Asian	Black/ Afr Amer	Nat Haw/ Pac Isl d	White	Two or More	Unknown	Total
Female	2397	23	170	1104	21	5175	120	409	9419
Male	1523	28	143	718	15	3439	86	299	6251
Unknown	50	2	1	17	0	47	0	13	130
Total	3970	53	314	1839	36	8661	206	721	15800

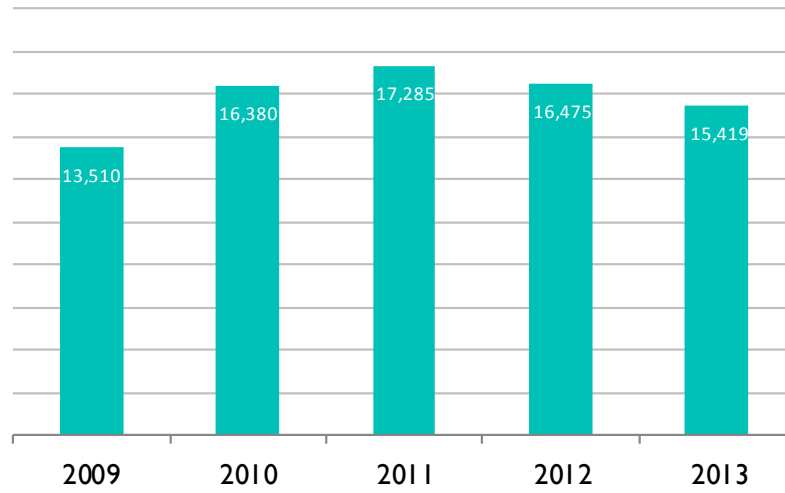
Gender and Age	< 18	18 - 19	20 - 21	22 - 24	25 - 34	35 - 44	45 - 54	55 +	Total
Female	1367	1916	1434	1200	1911	963	499	129	9419
Male	800	1503	1137	876	1182	466	226	61	6251
Unknown	12	38	20	23	23	9	2	3	130
Total	2179	3457	2591	2099	3116	1438	727	193	15800

Top 10 Primary Majors	n	Top 10 FL Counties	n	Top 10 Courses	n
1. AA General Studies	9406	1. Lee	8937	1. ENC 1101	3132
2. AS Pre-Nursing	1523	2. Collier	3804	2. MAT 1033	1873
3. Non-Degree Seeking	459	3. Charlotte	1736	3. MAC 1105	1746
4. BAS Supervision & Mgmt	390	4. Hendry	448	4. PSY 2012	1494
5. AS Business/Admin Mgmt	387	5. Sarasota	255	5. MAT 0028	1386
6. AS Nursing Basic Prgm	373	6. DeSoto	78	6. SLS 1515	1359
7. AS Pre-Radiology Tech	345	7. Broward	64	7. ENC 1102	1175
8. AS Criminal Justice Tech	238	8. Glades	59	8. BSC 1010	1002
9. BS Nursing	223	9. Miami-Dade	35	9. BSC 1010L	960
10. AS Emer Med Serv Tech	219	10. Palm Beach	32	10. DEP 2004	947

Source: Local Banner data

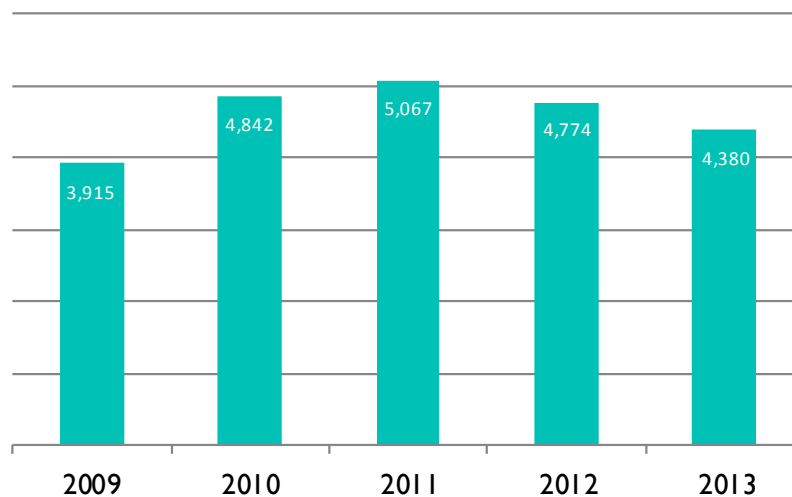
Spring Headcount Enrollment

	<b>Spring 2009</b>	<b>Spring 2010</b>	<b>Spring 2011</b>	<b>Spring 2012</b>	<b>Spring 2013</b>	<b>5 Year % Change</b>
<b>Headcount</b>	13,510	16,380	17,285	16,475	15,419	14.1%



Spring FTE Enrollment

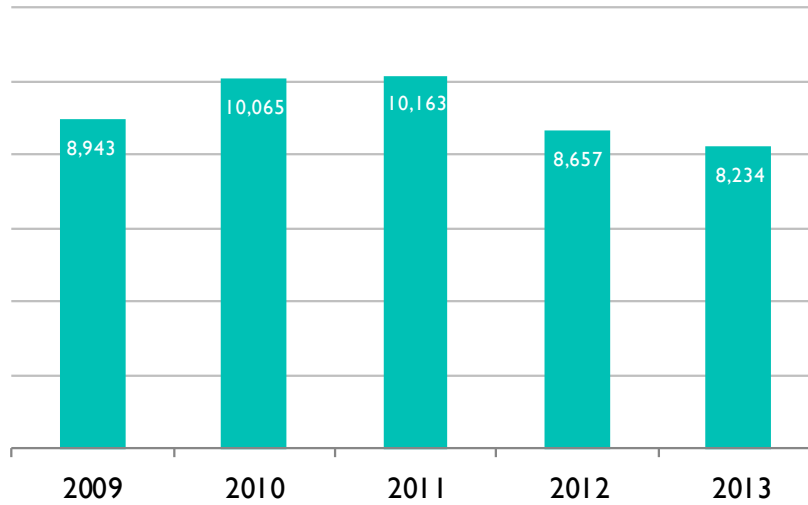
	<b>Spring 2009</b>	<b>Spring 2010</b>	<b>Spring 2011</b>	<b>Spring 2012</b>	<b>Spring 2013</b>	<b>5 Year % Change</b>
<b>Total FTE</b>	3,915	4,842	5,067	4,774	4,380	11.9%



Source: Local Banner data

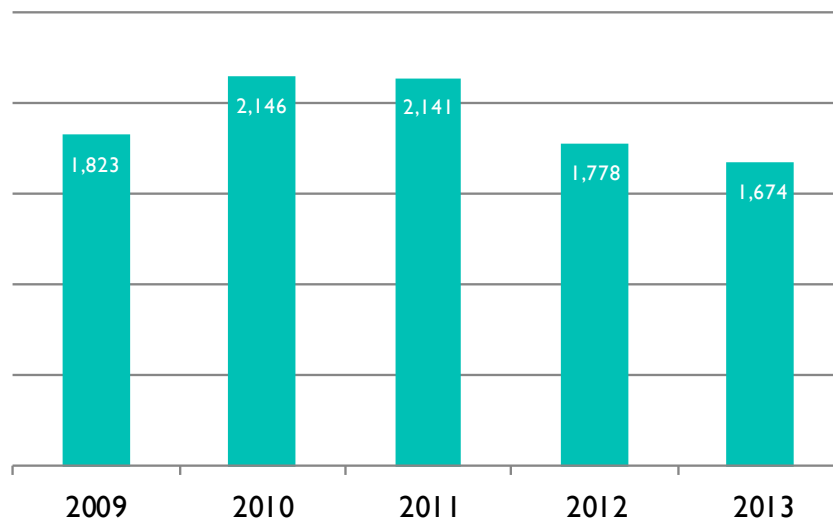
### Summer Headcount Enrollment

	Summer 2009	Summer 2010	Summer 2011	Summer 2012	Summer 2013	5 Year % Change
<b>Headcount</b>	8,943	10,065	10,163	8,657	8,234	-7.9%



### Summer FTE Enrollment

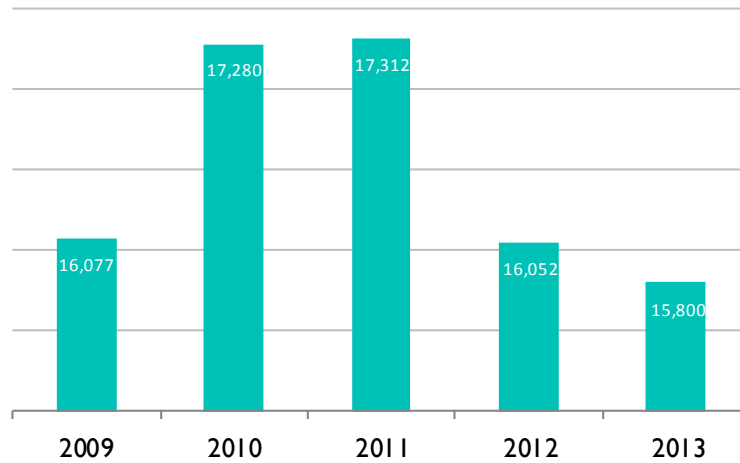
	Summer 2009	Summer 2010	Summer 2011	Summer 2012	Summer 2013	5 Year % Change
<b>Total FTE</b>	1,823	2,146	2,141	1,778	1,674	-8.2%



Source: Local Banner data

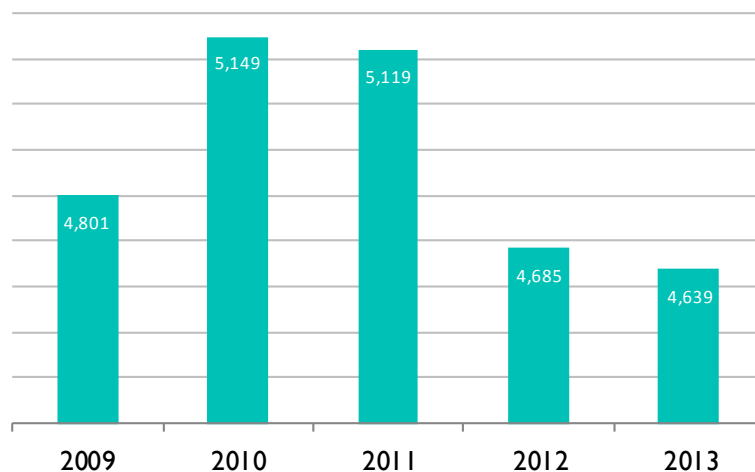
Fall Headcount Enrollment

	Fall 2009	Fall 2010	Fall 2011	Fall 2012	Fall 2013	5 Year % Change
<b>Headcount</b>	16,077	17,280	17,312	16,052	15,800	-1.7%



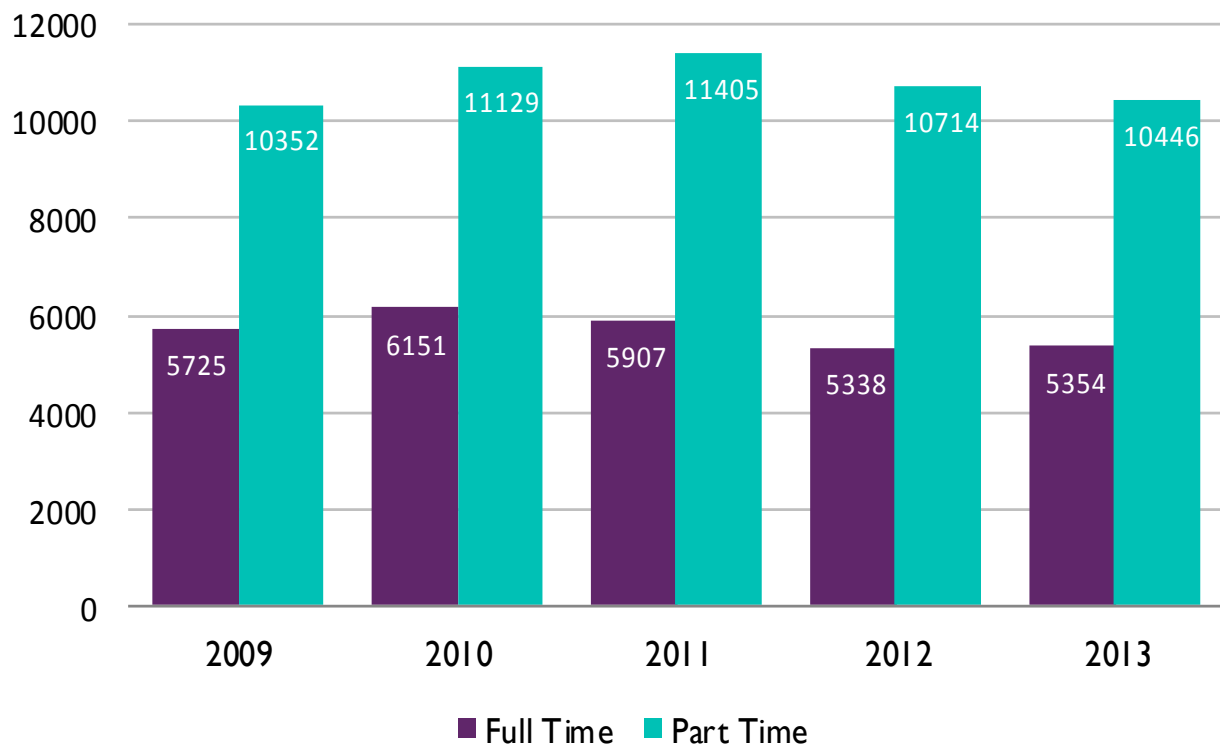
Fall FTE Enrollment

	Fall 2009	Fall 2010	Fall 2011	Fall 2012	Fall 2013	5 Year % Change
<b>Total FTE</b>	4,801	5,149	5,119	4,685	4,639	-3.4%



## Fall Enrollment by Full-time & Part-time

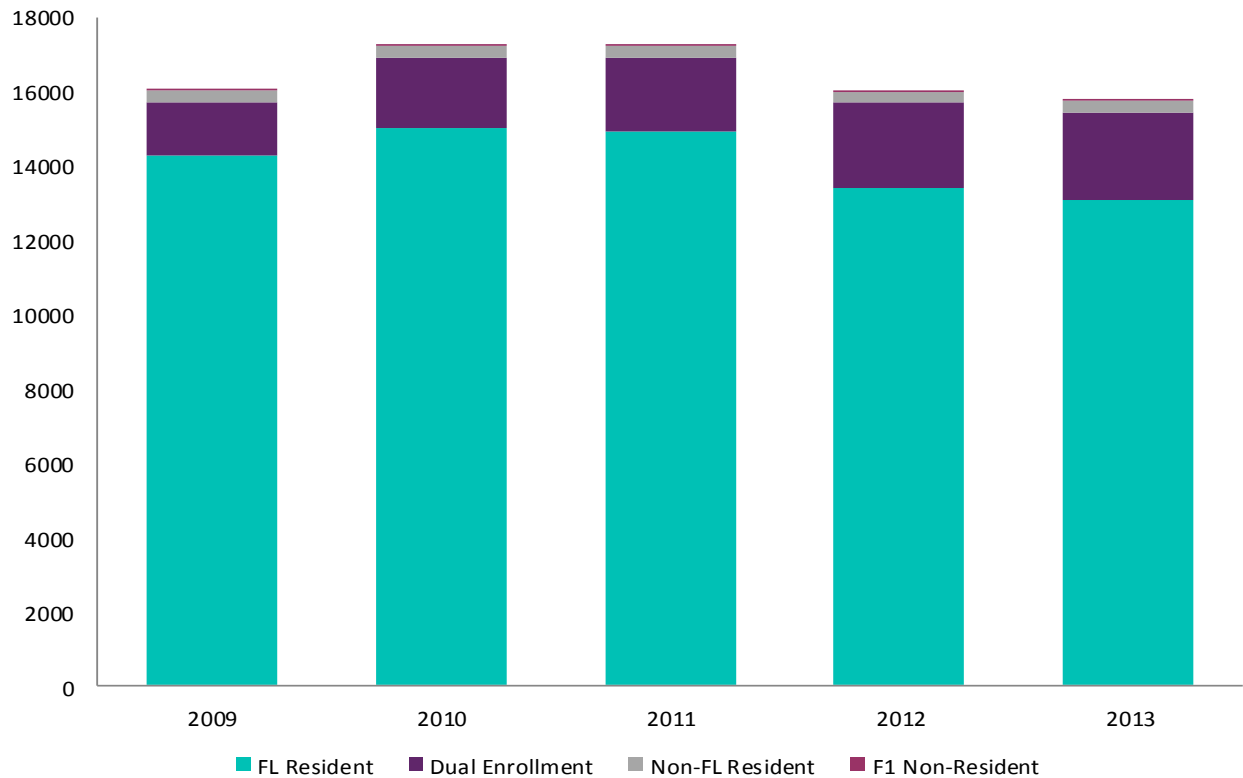
	Fall 2009	Fall 2010	Fall 2011	Fall 2012	Fall 2013	5 Year % Change
<b>Full Time</b>	5725	6151	5907	5338	5354	-6.5%
<b>Part Time</b>	10352	11129	11405	10714	10446	0.9%
<b>Total</b>	16077	17280	17312	16052	15800	-1.7%



Source: Local Banner data

## Fall Enrollment by Residency Status

	Fall 2009	Fall 2010	Fall 2011	Fall 2012	Fall 2013	5 Year % Change
<b>FL Resident</b>	14302	15047	14932	13425	13094	-8.4%
<b>Non-FL Resident</b>	290	295	318	299	299	3.1%
<b>F1 Non-Resident*</b>	47	41	47	41	35	-25.5%
<b>Dual Enrollment</b>	1438	1897	2015	2287	2372	65.0%
<b>Total</b>	16077	17280	17312	16052	15800	-1.7%

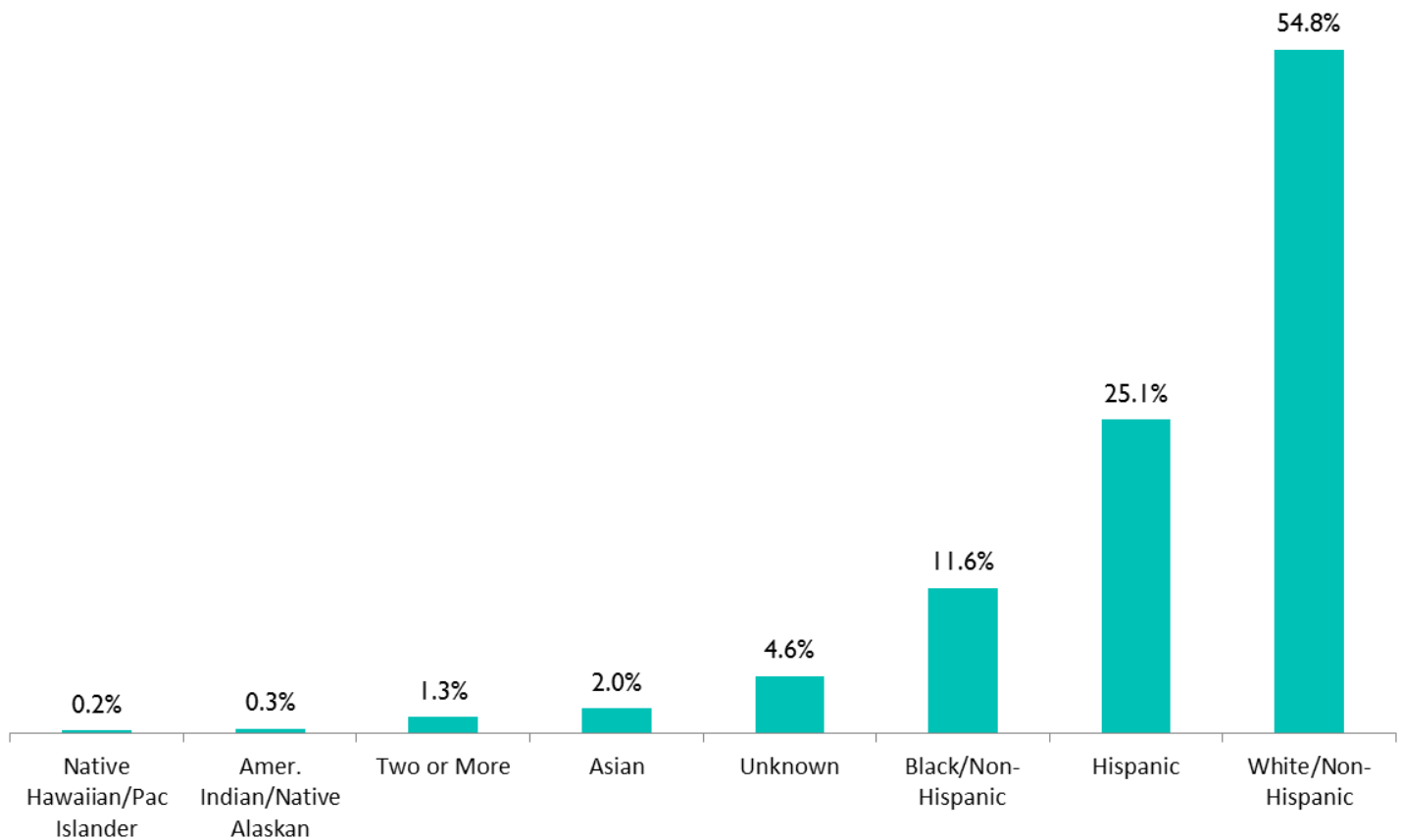


\*F1 Non-Resident: An F1 visa is issued to international students who are attending an academic program or English Language Program at a US college or university.

Source: Local Banner data

	Fall 2009	Fall 2010	Fall 2011	Fall 2012	Fall 2013	5 Year % Change
<b>Amer. Indian/Native Alaskan</b>	47	47	46	44	53	12.8%
<b>Asian</b>	297	286	322	325	314	5.7%
<b>Black/Non-Hispanic</b>	1787	1747	1898	1756	1839	2.9%
<b>Native Hawaiian/Pac Islander</b>	7	20	31	34	36	414.3%
<b>Hispanic</b>	3189	3612	3854	3683	3970	24.5%
<b>Two or More</b>	19	54	113	143	206	984.2%
<b>White/Non-Hispanic</b>	9707	9462	10305	9309	8661	-10.8%
<b>Unknown</b>	1024	2052	743	758	721	-29.6%

## Fall 2013

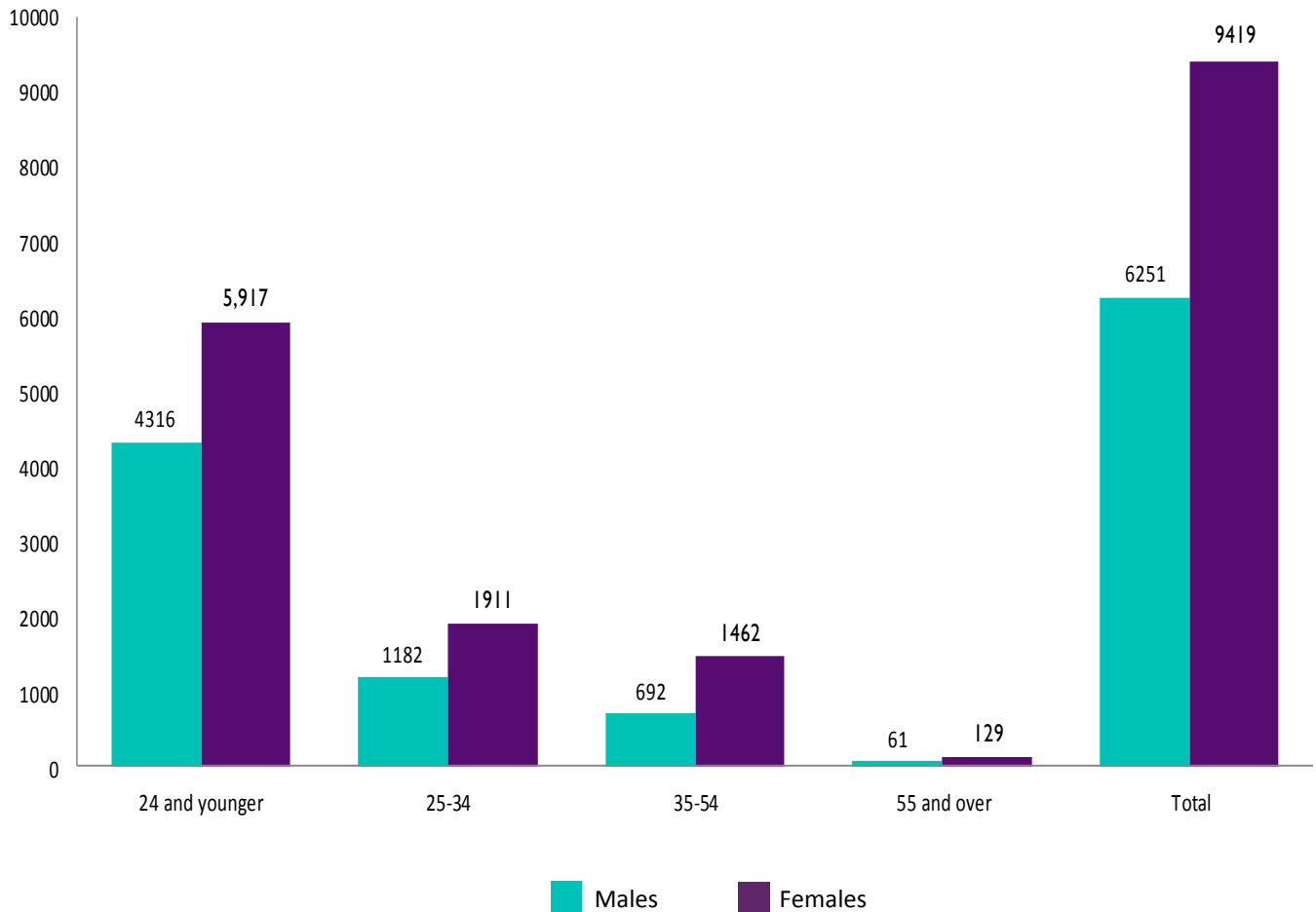


Source: Local Banner data



**Fall 2013**

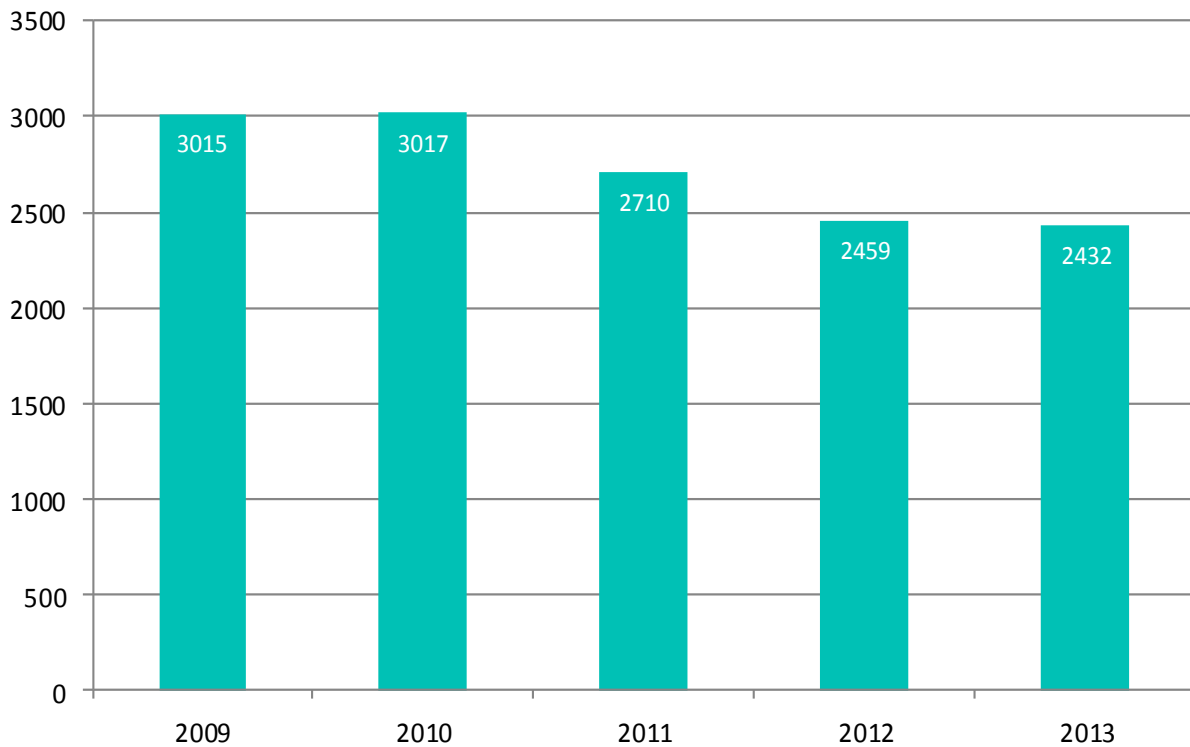
Age	Males		Females		Total*	
	#	% of Total	#	% of Total	#	% of Total
<b>24 and younger</b>	4316	27.3%	5,917	37.4%	10,326	65.4%
<b>25-34</b>	1182	7.5%	1911	12.1%	3,116	19.7%
<b>35-54</b>	692	4.4%	1462	9.3%	2,165	13.7%
<b>55 and over</b>	61	0.4%	129	0.8%	193	1.2%
<b>Total</b>	<b>6251</b>	<b>39.6%</b>	<b>9419</b>	<b>59.6%</b>	<b>15,800</b>	<b>100.0%</b>



Source: Local Banner data

	Fall 2009	Fall 2010	Fall 2011	Fall 2012	Fall 2013	5 Year # Change	5 Year % Change
Students taking 1 or more Developmental Studies Course	3015	3017	2710	2459	2432	-583	-19.3%
% of Total Enrollment in Developmental Studies	18.8%	17.5%	15.7%	15.3%	15.4%		
# Change		2	-307	-251	-27		
% Change		0.1%	-10.2%	-9.3%	-1.1%		

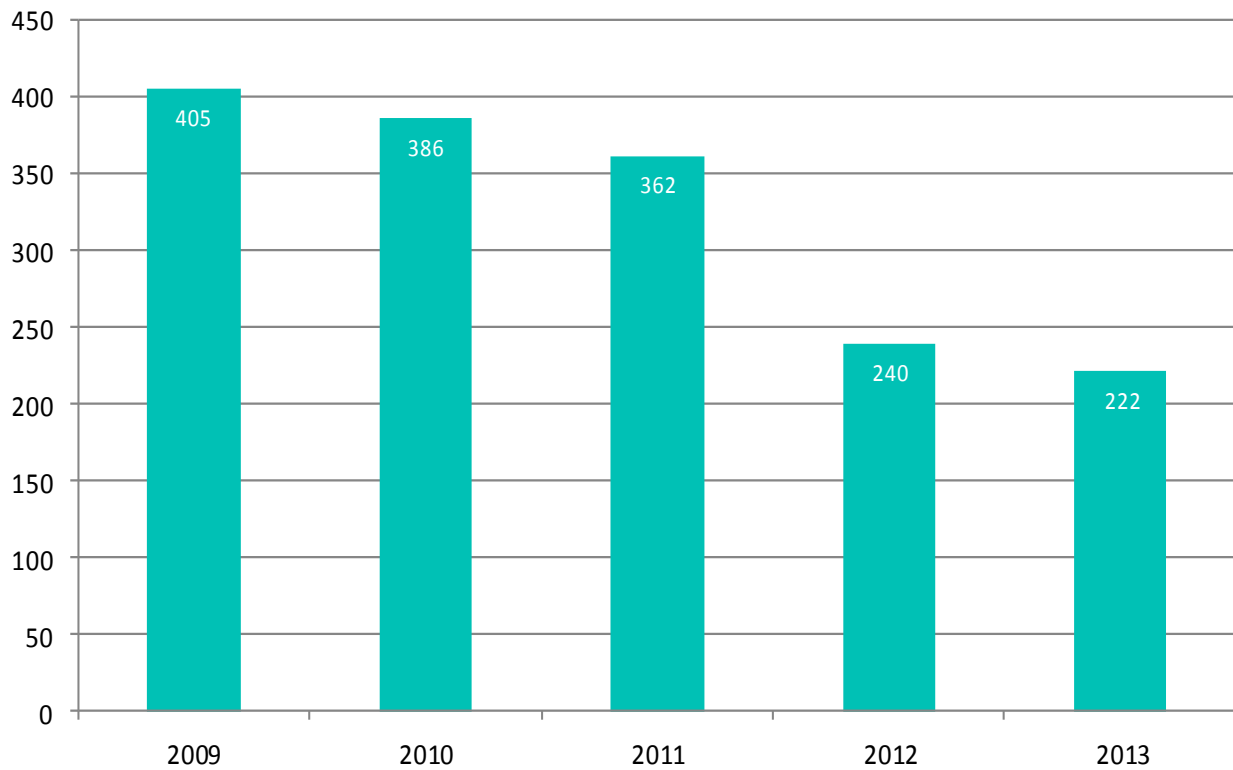
## Students taking 1 or more Developmental Studies Course



Source: Local Banner data

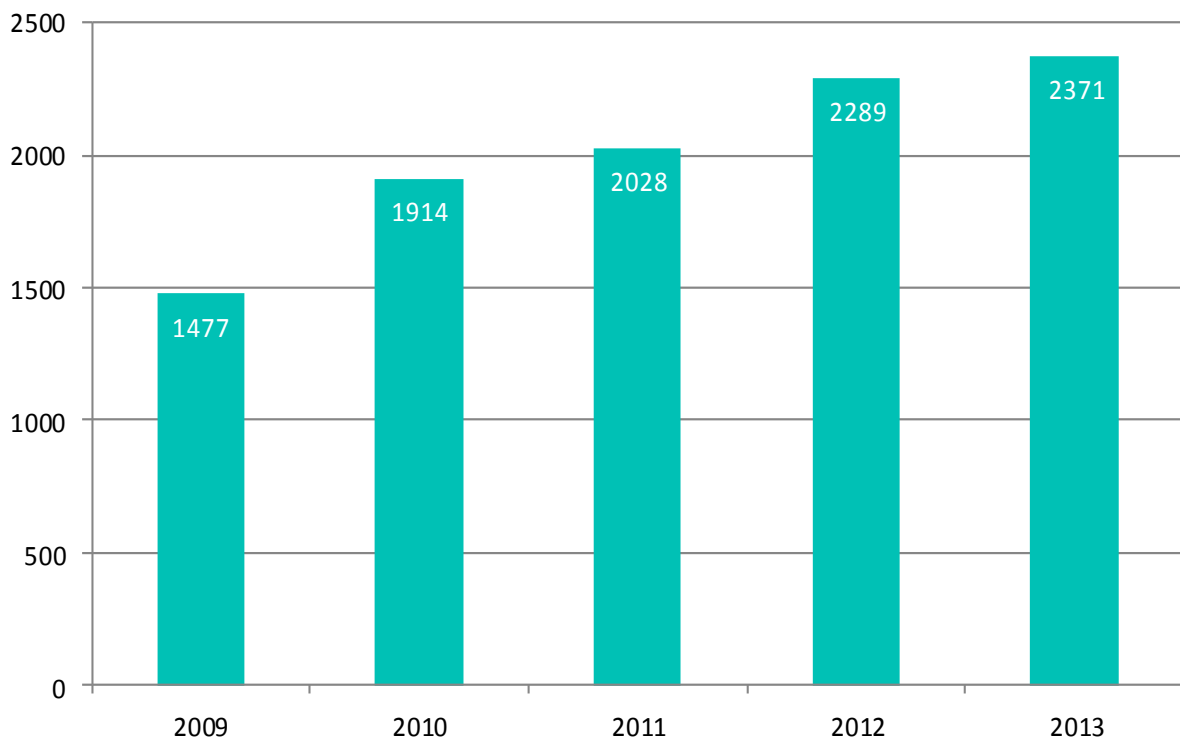
	<b>Fall 2009</b>	<b>Fall 2010</b>	<b>Fall 2011</b>	<b>Fall 2012</b>	<b>Fall 2013</b>	<b>5 Year # Change</b>	<b>5 Year % Change</b>
Students taking 1 or more EAP Course	405	386	362	240	222	-183	-45.2%
% of Total Enrollment in EAP	2.5%	2.2%	2.1%	1.5%	1.4%		
# Change		-19	-24	-122	-18		
% Change		-4.7%	-6.2%	-33.7%	-7.5%		

### Students taking 1 or more EAP Course



Source: Local Banner data

	Fall 2009	Fall 2010	Fall 2011	Fall 2012	Fall 2013	5 Year # Change	5 Year % Change
Dual Enrollment Students	1477	1914	2028	2289	2371	894	60.5%
% of Total Enrollment	9.2%	11.1%	11.7%	14.3%	15.0%		
# Change		437	114	261	82		
% Change		29.6%	6.0%	12.9%	3.6%		



Source: Local Banner data

**School of Health Professions**

	<b>Fall 2009</b>	<b>Fall 2010</b>	<b>Fall 2011</b>	<b>Fall 2012</b>	<b>Fall 2013</b>
BAS Cardiopulmonary Science	---	4	22	26	37
BS Nursing	145	257	240	210	223
AS Cardiovascular Technology	44	43	50	35	35
AS Dental Hygiene	51	42	40	36	34
AS Emergency Medical Services	242	252	221	238	219
AS Fire Science Technology	103	71	77	62	63
AS Health Information Technology	19	32	29	30	28
AS Human Services	---	7	35	52	59
AS Nursing Basic Program	598	502	418	381	373
AS Nursing Advanced Placement	116	131	135	140	126
AS Radiologic Technology	56	60	63	48	49
AS Respiratory Care	89	83	89	64	60
AS Pre-Cardiovascular Technology	65	56	61	67	42
AS Pre-Dental Hygiene	209	225	209	212	191
AS Pre-Health Information Technology	13	55	92	69	75
AS Pre-Human Services, Addiction	---	9	41	25	15
AS Pre-Nursing	1923	2076	2004	1582	1523
AS Pre-Nursing AP	52	82	120	119	119
AS Pre-Radiologic Technology	447	480	470	370	345
AS Pre-Respiratory Care Technology	63	72	65	59	64
Certificate in Emergency Medical Technician	132	52	20	15	20
Certificate in Firefighter Minimum Standards	28	6	6	4	8
Certificate in Paramedic	17	6	6	14	7
Certificate in Dental Assisting	2	1	2	1	1
ASN Opticianry	20	10	4	5	2
ASN Physical Therapist Assistant	47	27	33	25	25
Certificate in Eye Care Technician	---	1	---	---	---
Certificate in Ophthalmic Laboratory Technician	1	---	---	---	---
<b>Total School of Health Professions</b>	<b>4,482</b>	<b>4,642</b>	<b>4,552</b>	<b>3,889</b>	<b>3,743</b>

**School of Education**

	<b>Fall 2009</b>	<b>Fall 2010</b>	<b>Fall 2011</b>	<b>Fall 2012</b>	<b>Fall 2013</b>
BS Elementary Education	163	253	235	200	195
BS Middle Grades Language Arts Education	---	---	18	23	21
BS Middle Grades Mathematics Education	---	---	8	17	14
BS Middle Grades Science Education	---	---	1	5	8
BS Secondary Biology Education	17	10	7	---	2
BS Secondary Mathematics Education	26	26	22	9	7
AS Early Childhood Education	227	181	79	38	16
Education Preparatory Institute Certificate	1	---	---	---	---
<b>Total School of Education</b>	<b>434</b>	<b>470</b>	<b>370</b>	<b>292</b>	<b>263</b>

**School of Business and Technology**

	<b>Fall 2009</b>	<b>Fall 2010</b>	<b>Fall 2011</b>	<b>Fall 2012</b>	<b>Fall 2013</b>
BAS Public Safety Administration	84	122	115	133	110
BAS Supervision and Management	139	250	369	405	390
AS Accounting Technology	141	154	147	117	102
AS Architectural Design and Construction Technology	---	---	---	7	37
AS Business Administration and Management	593	535	472	405	387
AS Civil Engineering Technology	---	---	---	9	29
AS Drafting and Design Technology	164	139	101	68	31
AS Computer Programming Analysis	159	173	178	140	181
AS Crime Scene Technology	133	122	120	87	65
AS Criminal Justice Technology	242	285	257	225	238
AS Internet Services Technology	48	55	52	35	16
AS Networking Services Technology	115	131	144	136	161
AS Paralegal Studies	222	214	213	170	150
AS Golf Course Operations	21	6	2	---	---
Certificate in Accounting Technology Management	18	15	8	8	7
Certificate in Computer Programmer	---	---	---	1	3
Certificate in Computer Programmer Specialist	---	---	---	1	1
Certificate in Crime Scene Technician	7	5	2	2	0
Certificate in Business Data Processing	21	10	9	2	---
Certificate in Information Technology Management	---	---	---	---	3
Certificate in Information Technology Support Specialist	---	---	---	---	3
Certificate in Network Specialist	12	15	12	5	1
Certificate in Small Business Management	28	26	13	20	14
<b>Total School of Business and Technology</b>	<b>2,147</b>	<b>2,257</b>	<b>2,214</b>	<b>1,976</b>	<b>1,929</b>

**School of Arts, Humanities, and Social Sciences**

**School of Pure and Applied Sciences**

	<b>Fall 2009</b>	<b>Fall 2010</b>	<b>Fall 2011</b>	<b>Fall 2012</b>	<b>Fall 2013</b>
AA General Studies	8199	9311	9635	9429	9406
<b>Total School of Arts, Humanities, and Social Sciences and School of Pure and Applied Sciences</b>	<b>8,199</b>	<b>9,311</b>	<b>9,635</b>	<b>9,429</b>	<b>9,406</b>

<b>Non-degree Seeking</b>	<b>815</b>	<b>600</b>	<b>541</b>	<b>466</b>	<b>459</b>
---------------------------	------------	------------	------------	------------	------------

Source: Local Banner data

# Fall Enrollment by State of Origin

## New England

Connecticut	6
Maine	0
Massachusetts	5
Rhode Island	0
Vermont	1
New Hampshire	1
<b>Total</b>	<b>13</b>

## Midwest

District of Columbia	1
Delaware	1
Maryland	2
New Jersey	10
New York	11
Pennsylvania	4
West Virginia	0
<b>Total</b>	<b>29</b>

## Southeast

Alabama	1
Florida	15617
Georgia	7
Mississippi	1
North Carolina	5
South Carolina	0
Tennessee	2
Virginia	7
<b>Total</b>	<b>15640</b>

## North Central

Illinois	6
Indiana	1
Kentucky	1
Michigan	6
Ohio	6
Wisconsin	4
<b>Total</b>	<b>24</b>

## Southwest

Arizona	1
Arkansas	2
Louisiana	0
New Mexico	0
Oklahoma	1
Texas	3
<b>Total</b>	<b>7</b>

## Great Plains

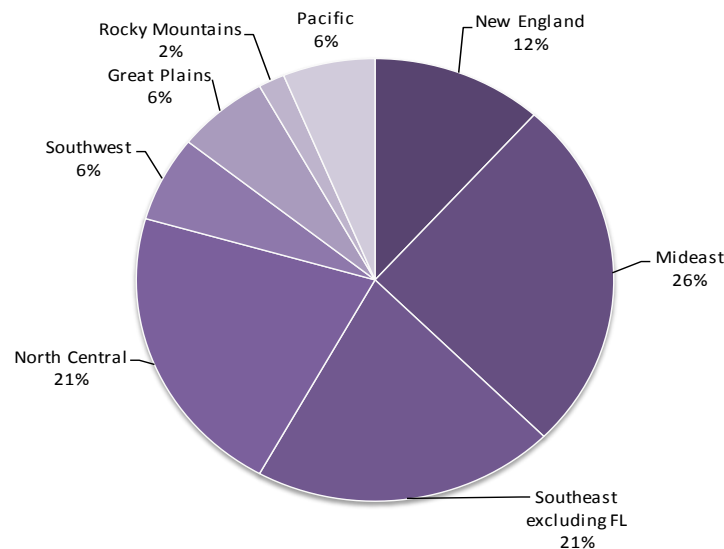
Iowa	1
Kansas	0
Minnesota	4
Missouri	2
Nebraska	0
North Dakota	0
South Dakota	0
<b>Total</b>	<b>7</b>

## Rocky Mountains

Colorado	1
Idaho	0
Montana	0
Nevada	1
Utah	0
Wyoming	0
<b>Total</b>	<b>2</b>

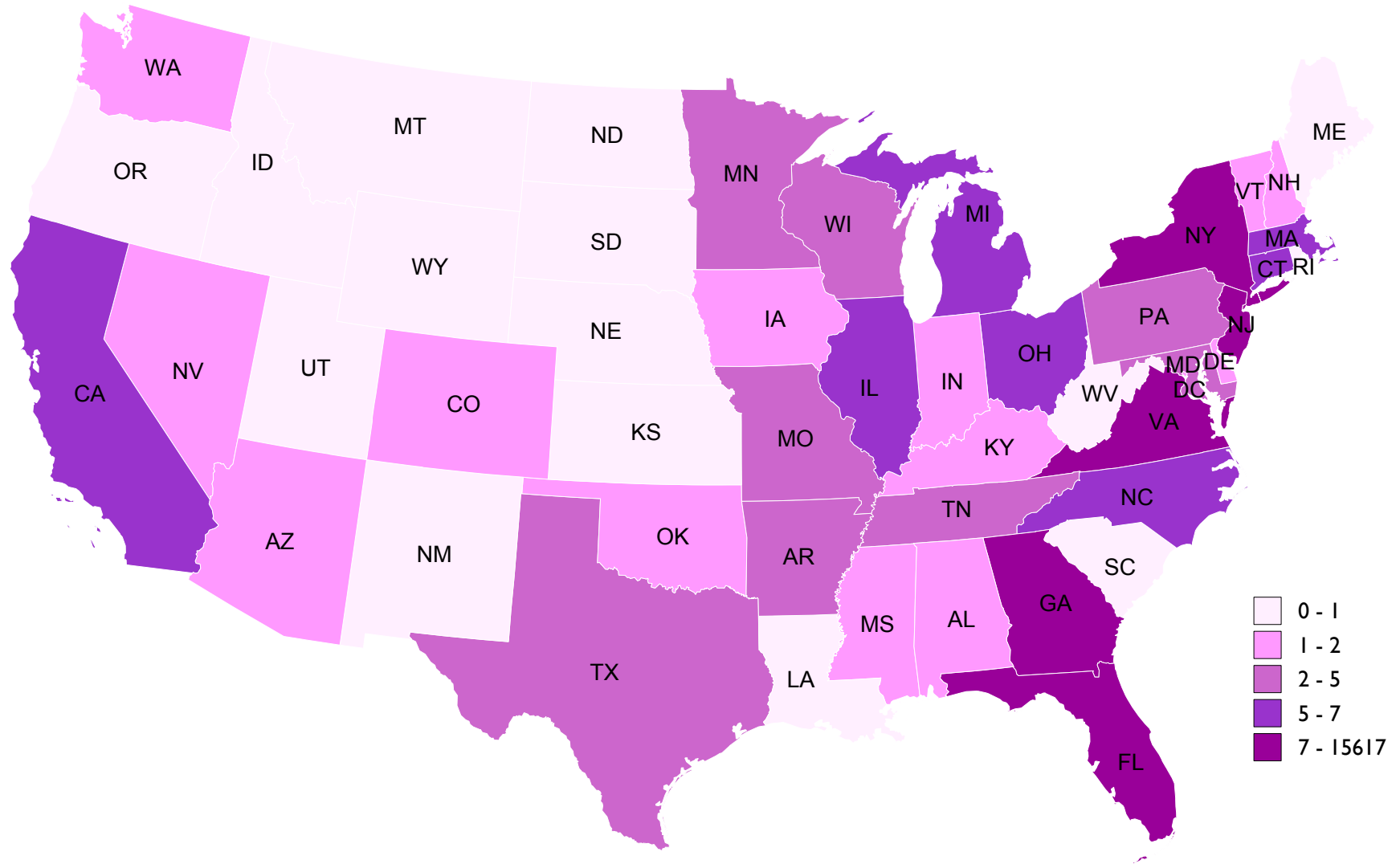
## Pacific

Alaska	0
California	6
Hawaii	0
Oregon	0
Washington	1
<b>Total</b>	<b>7</b>



Source: Local Banner data

# Fall Enrollment by State of Origin

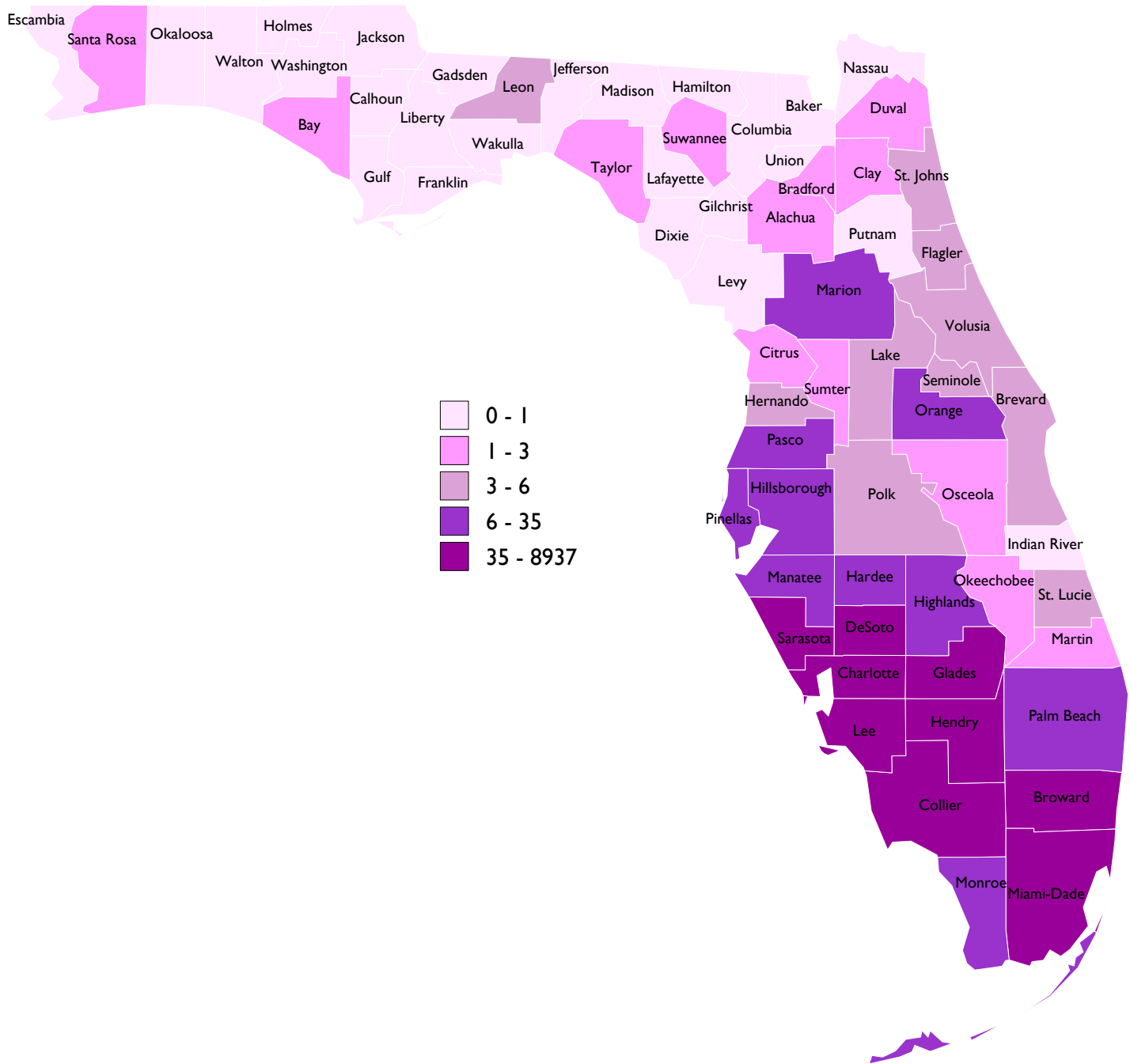




Fall 2013 Florida County of Origin

	<u>n</u>		<u>n</u>
Alachua	2	Miami-Dade	35
Bay	1	Monroe	6
Bradford	1	Okeechobee	1
Brevard	4	Orange	15
Broward	64	Osceola	2
Charlotte	1,736	Palm Beach	32
Citrus	2	Pasco	8
Clay	1	Pinellas	13
Collier	3,804	Polk	5
Desoto	78	Santa Rosa	1
Duval	2	Sarasota	255
Flagler	4	Seminole	4
Glades	59	St Johns	4
Hardee	6	St Lucie	4
Hendry	448	Sumter	1
Hernando	4	Suwannee	2
Highlands	19	Taylor	1
Hillsborough	24	Volusia	3
Lake	5	<b>Total</b>	<b>15,617</b>
Lee	8,937		
Leon	3		
Manatee	13		
Marion	6		
Martin	2		

# Fall Enrollment by County of Origin



Source: Local Banner data

**3-Year Total SCH**

	<b>Spring 2011</b>	<b>Spring 2012</b>	<b>Spring 2013</b>	<b>I-Year % Change</b>
School of Arts, Humanities & Social Sciences	58353	56321	51621	-8.3%
School of Business and Technology	17878	16781	14478	-13.7%
School of Education	6027	5896	4888	-17.1%
School of Health Professions	10374	9915	10323	4.1%
School of Pure & Applied Sciences	38797	37700	36175	-4.0%
College and Career Readiness	20517	16541	13874	-16.1%
Library (Undergrad Research)	64	64	39	-39.1%

**Spring 2013 SCH By Campus**

	<b>Lee</b>	<b>Collier</b>	<b>Charlotte</b>	<b>Hendry/ Glades</b>	<b>FSW Online</b>
School of Arts, Humanities & Social Sciences	27029	9387	5534	1158	8513
School of Business and Technology	6915	1743	1149	246	4425
School of Education	3298	306	305	78	901
School of Health Professions	6068	1720	899	0	1636
School of Pure & Applied Sciences	20223	6074	4204	806	4868
College and Career Readiness	9100	2833	1275	481	185
Library (Undergrad Research)	4	0	0	0	35

**Spring 2013 SCH by Part of Term**

	<b>Full Term</b>	<b>Mini-A</b>	<b>Mini-B</b>	<b>Special C</b>	<b>Dual Enrollment</b>
School of Arts, Humanities & Social Sciences	47402	771	366	0	3082
School of Business and Technology	11383	1299	1623	92	81
School of Education	4651	39	156	0	42
School of Health Professions	6226	928	1006	2163	0
School of Pure & Applied Sciences	35014	0	0	14	1147
College and Career Readiness	13421	120	148	185	0
Library (Undergrad Research)	39	0	0	0	0

Source: Local Banner data

<b>3-Year Total SCH</b>	<b>Summer 2011</b>	<b>Summer 2012</b>	<b>Summer 2013</b>	<b>I-Year % Change</b>
School of Arts, Humanities & Social Sciences	22807	18986	17731	-6.6%
School of Business and Technology	7990	7078	6094	-13.9%
School of Education	1876	1512	1431	-5.4%
School of Health Professions	4764	3854	4199	9.0%
School of Pure & Applied Sciences	19583	16414	16033	-2.3%
College and Career Readiness	7195	5480	4686	-14.5%
Library (Undergraduate Research)	29	18	33	83.3%

<b>Summer 2013 SCH By Campus</b>	<b>Lee</b>	<b>Collier</b>	<b>Charlotte</b>	<b>Hendry/ Glades</b>	<b>FSW Online</b>
School of Arts, Humanities & Social Sciences	6959	2714	959	435	6664
School of Business and Technology	2368	387	216	126	2997
School of Education	520	42	30	0	839
School of Health Professions	2288	705	160	0	1046
School of Pure & Applied Sciences	8925	2381	1048	87	3592
College and Career Readiness	3478	594	367	141	106
Library (Undergraduate Research)	9	0	0	0	24

<b>Summer 2013 SCH by Part of Term</b>	<b>Full Term</b>	<b>Mini-A</b>	<b>Mini-B</b>	<b>Special C</b>	<b>Dual Enrollment</b>
School of Arts, Humanities & Social Sciences	4360	6693	6678	0	n/a
School of Business and Technology	2435	1920	1722	17	n/a
School of Education	0	838	593	0	n/a
School of Health Professions	2086	1102	414	597	n/a
School of Pure & Applied Sciences	4355	6216	5318	144	n/a
College and Career Readiness	728	2017	1835	106	n/a
Library (Undergraduate Research)	9	12	9	3	n/a

Source: Local Banner data

<b>3-Year Total SCH</b>	<b>Fall 2011</b>	<b>Fall 2012</b>	<b>Fall 2013</b>	<b>1-Year % Change</b>
School of Arts, Humanities & Social Sciences	59663	55746	51903	-6.9%
School of Business and Technology	17854	15087	14553	-3.5%
School of Education	6090	5151	4781	-7.2%
School of Health Professions	11012	10553	10294	-2.5%
School of Pure & Applied Sciences	38394	36208	37459	3.5%
College and Career Readiness	20504	17761	20087	13.1%
Library (Undergraduate Research)	47	51	81	58.8%

<b>Fall 2013 SCH By Campus</b>	<b>Lee</b>	<b>Collier</b>	<b>Charlotte</b>	<b>Hendry/ Glades</b>	<b>FSW Online</b>
School of Arts, Humanities & Social Sciences	26028	8864	5906	1560	9545
School of Business and Technology	6087	1518	897	354	5697
School of Education	3373	318	212	33	845
School of Health Professions	5481	1840	1099	0	1874
School of Pure & Applied Sciences	21440	6389	3901	803	4926
College and Career Readiness	12992	4310	1890	741	154
Library (Undergraduate Research)	31	0	0	0	50

<b>Fall 2013 SCH by Part of Term</b>	<b>Full Term</b>	<b>Mini-A</b>	<b>Mini-B</b>	<b>Special C</b>	<b>Dual Enrollment</b>
School of Arts, Humanities & Social Sciences	47433	741	598	0	3131
School of Business and Technology	11994	1017	1440	102	0
School of Education	4512	0	83	0	186
School of Health Professions	6184	1132	981	1997	0
School of Pure & Applied Sciences	36329	0	4	24	1102
College and Career Readiness	19253	268	412	154	0
Library (Undergraduate Research)	63	0	18	0	0

Source: Local Banner data

**Bachelor of Applied Science**

Cardiopulmonary Sciences  
Public Safety Administration  
Supervision and Management

**Bachelor of Science**

Elementary Education, ESOL & Reading Endorsement  
Middle Grades Language Arts Education  
Middle Grades Mathematics Education  
Middle Grades Science Education  
Nursing  
Secondary Biology Education  
Secondary Mathematics Education

**Associate in Arts**

General Studies

**Associate in Science**

Accounting Technology  
Business Administration and Management  
Cardiovascular Technology  
Computer Programming and Analysis  
Crime Scene Technology  
Criminal Justice Technology  
Dental Hygiene  
Drafting and Design Technology  
Emergency Medical Services Technology  
Fire Science Technology  
Health Information Management  
Human Services  
Internet Services Technology  
Networking Administrator  
Nursing: RN Advanced Placement and Basic Program RN  
Paralegal Studies (AS)  
Radiologic Technology (AS)  
Respiratory Care (AS)

**Certificates**

Accounting Applications Certificate  
Computer Programming Certificate  
Crime Scene Technology Certificate  
Emergency Medical Technician - Basic Certificate  
Firefighter Minimum Standards Certificate  
Network Specialist Certificate  
Paramedic Certificate  
Small Business Management Certificate

**School of Arts, Humanities, and Social Sciences  
& School of Pure and Applied Sciences**

	AY 2009-10	AY 2010-11	AY 2011-12	AY 2012-13	AY 2013-14
Associate's Degrees	1215	1528	1777	1755	1714

**School of Business and Technology**

	AY 2009-10	AY 2010-11	AY 2011-12	AY 2012-13	AY 2013-14
Certificates	39	36	34	33	22
Associate's Degrees	207	252	246	208	218
Bachelor's Degrees	44	78	109	161	134

**School of Education**

	AY 2009-10	AY 2010-11	AY 2011-12	AY 2012-13	AY 2013-14
Associate's Degrees	8	18	9	7	1
Bachelor's Degrees	15	100	117	103	106

**School of Health Professions**

	AY 2009-10	AY 2010-11	AY 2011-12	AY 2012-13	AY 2013-14
Certificates	336	286	245	223	229
Associate's Degrees	406	415	390	407	375
Bachelor's Degrees	0	95	84	92	92

**Florida SouthWestern State College Total**

	AY 2009-10	AY 2010-11	AY 2011-12	AY 2012-13	AY 2013-14
Certificates	375	322	279	256	251
Associate's Degrees	1836	2213	2422	2377	2308
Bachelor's Degrees	59	273	310	356	332

## School of Health Professions

### Degrees and Certificates Conferred Academic Years 2009-10 - 2013-14

<b>Bachelor's Degrees</b>					
<b>Major</b>	AY 2009-10	AY 2010-11	AY 2011-12	AY 2012-13	AY 2013-14
Cardiopulmonary Sciences	---	---	1	5	9
Nursing	---	95	83	87	83

<b>Associate's Degrees</b>					
<b>Major</b>	AY 2009-10	AY 2010-11	AY 2011-12	AY 2012-13	AY 2013-14
Cardiovascular Technology	11	12	13	11	18
Dental Hygiene	17	16	16	14	14
Emergency Medical Services	30	37	29	53	40
Fire Science Technology	24	32	13	19	14
Health Information Technology	---	1	14	15	10
Nursing	272	277	254	238	224
Radiologic Technology	28	20	20	26	21
Respiratory Care	24	20	31	31	34

<b>Certificates</b>					
<b>Major</b>	AY 2009-10	AY 2010-11	AY 2011-12	AY 2012-13	AY 2013-14
Emergency Medical Technician	263	213	152	137	141
Firefighter Minimum Standards	60	25	39	6	31
Paramedic	13	48	54	80	57

<b>Total</b>					
	AY 2009-10	AY 2010-11	AY 2011-12	AY 2012-13	AY 2013-14
Bachelor's Degrees	0	95	84	92	92
Associate's Degrees	406	415	390	407	375
Certificates	336	286	245	223	229

Source: Local Banner data



School of Education

**Degrees and Certificates Conferred Academic Years 2009-10 - 2013-14**

<b>Bachelor's Degrees</b>					
<b>Major</b>	AY 2009-10	AY 2010-11	AY 2011-12	AY 2012-13	AY 2013-14
Elementary Education	11	92	102	82	88
Middle Grades Language Arts Education	---	---	---	10	6
Middle Grades Mathematics Education	---	---	1	7	6
Middle Grades Science Education	---	---	---	---	4
Secondary Biology Education	3	2	6	---	---
Secondary Mathematics Education	1	6	8	4	2

<b>Associate's Degrees</b>					
<b>Major</b>	AY 2009-10	AY 2010-11	AY 2011-12	AY 2012-13	AY 2013-14
Early Childhood Education	8	18	9	7	1

<b>Total</b>					
	AY 2009-10	AY 2010-11	AY 2011-12	AY 2012-13	AY 2013-14
Bachelor's Degrees	15	100	117	103	106
Associate's Degrees	8	18	9	7	1

## School of Business and Technology

### Degrees and Certificates Conferred Academic Years 2009-10 - 2013-14

<b>Bachelor's Degrees</b>					
<b>Major</b>	AY 2009-10	AY 2010-11	AY 2011-12	AY 2012-13	AY 2013-14
Public Safety Administration	28	38	30	42	37
Supervision and Management	16	40	79	119	97

<b>Associate's Degrees</b>					
<b>Major</b>	AY 2009-10	AY 2010-11	AY 2011-12	AY 2012-13	AY 2013-14
Accounting Technology	6	20	22	15	16
Architectural Design & Construction Technology	---	---	---	---	1
Business Administration and Management	34	60	39	34	38
Civil Engineering Technology	---	---	---	---	4
Computer Programming Analysis	7	8	8	7	12
Crime Scene Technology	10	9	15	9	14
Criminal Justice Technology	50	54	65	66	60
Drafting and Design Technology	30	24	16	12	13
Golf Course Operations	12	3	3	1	---
Internet Services Technology	3	7	7	2	---
Networking Services Technology	18	17	33	21	25
Paralegal Studies	37	50	38	41	35

<b>Certificates</b>					
<b>Major</b>	AY 2009-10	AY 2010-11	AY 2011-12	AY 2012-13	AY 2013-14
Accounting Technology Management	4	7	10	10	3
Business Data Processing	8	1	4	1	---
Computer Programmer	---	---	---	---	1
Computer Programming Specialist	16	8	3	11	2
Crime Scene Technician	4	13	3	4	4
Information Technology Management	---	---	---	---	6
Information Technology Support Specialist	---	---	---	3	1
Small Business Management	7	7	14	4	5

<b>Total</b>					
	AY 2009-10	AY 2010-11	AY 2011-12	AY 2012-13	AY 2013-14
Bachelor's Degrees	44	78	109	161	134
Associate's Degrees	207	252	246	208	218
Certificates	39	36	34	33	22

Source: Local Banner data

The FSW Division of Libraries provides a comprehensive collection of print books, eBooks, streaming videos, journals, newspapers, magazines, and other resources, in addition to interlibrary loan and documentary delivery services, to support the curriculum and research needs of the college community. Most of these resources are accessible in full text through the libraries' website, which also features research guides and tutorials created by FSW librarians. The FSW Libraries has a robust instructional program, providing research instruction to students on a one-on-one basis, and to classes of students through formal library research instruction. FSW librarians also teach the one credit online course LIS 2004: Internet for College Research.

The following table provides an overview for **2013-2014** fiscal year of the Division of Libraries.

<b>Books</b>	Lee	Collier	Charlotte	Hendry/Glades	Division Total
Reference	1,960	651	801	140	3,552
Circulation	43,110	7,571	8,585	1,386	60,652
E-Books	Student Online Access				153,377
<b>Total</b>	<b>45,070</b>	<b>8,222</b>	<b>9,386</b>	<b>1,526</b>	<b>217,581</b>
<b>Periodicals</b>					
	Lee	Collier	Charlotte	Hendry/Glades	Division Total
In Print	50	21	73	0	144
<b>Non-Print Resources</b>					
	Lee	Collier	Charlotte	Hendry/Glades	Division Total
Electronic Databases:	Student Online Access				132
Journals/Magazines/Newspapers	Student Online Access				31,168
Streaming Videos	Student Online Access				31,168
DVD's	3,063	402	489	217	4,171
Kindles/ E-Readers	22	3	5	12	42
Anatomical Models	37	11	22	0	70
<b>Total</b>	<b>3,122</b>	<b>416</b>	<b>516</b>	<b>229</b>	<b>35,583</b>
<b>Internet Computers</b>					
	Lee	Collier	Charlotte	Hendry/Glades	Division Total
Main Floor (Student Use)	87	40	75	3	205
Computer Lab (Instructional and Student Use)	32	0	0	0	32
Library WEPA Stations	2	2	2	1	7
Instruction Use	3	0	0	0	3
Staff/Faculty Computers	21	5	9	2	37
PAC Terminals	4	0	0	0	4
<b>Total</b>	<b>149</b>	<b>47</b>	<b>86</b>	<b>6</b>	<b>288</b>
<b>Staff</b>					
	Lee	Collier	Charlotte	Hendry/Glades	Division Total
Professional Staff	7	1	1.5	1	10.5
Support Staff	4.5	3	3.5	0.5	11.5
<b>Total</b>	<b>11.5</b>	<b>4</b>	<b>5</b>	<b>1.5</b>	<b>22</b>

Published by the Office of Institutional Research  
Florida SouthWestern State College