

2014 Fact Book



Published by the Office of Institutional Research

General Information

History of the College	4
Chronological Highlights	5
Accreditations	6
Purpose & Mission	7
Campus Maps	8

Administration and Faculty

Board of Trustees	12
President of Florida SouthWestern State College	13
Administration	14
Florida SouthWestern State College Organizational Chart	16
Academic Affairs Organizational Chart	17
Institutional Advancement Organizational Chart	18
Administrative Services Organizational Chart	19
Student Affairs & Enrollment Management Organizational Chart	20
Research, Technology, & Accountability Organizational Chart	21
Foundation Board	22
Faculty & Staff	23

Enrollment

Historical Enrollment	25
Fall Enrollment Executive Summary	26
Lee Campus Profile	27
Collier Campus Profile	28
Charlotte Campus Profile	29
Hendry/Glades Center Profile	30
FSW Online Profile	31
Academic Year Enrollment by Attendance	32
Spring Headcount & FTE Enrollment	33
Summer Headcount & FTE Enrollment	34
Fall Headcount & FTE Enrollment	35
Fall Enrollment by Full-Time & Part-Time	36
Fall 2014 Full-Time and Part-Time Enrollment by Credit Hours Enrolled	37
Fall Enrollment by Residency Status	38
Fall Enrollment by Ethnic Group	39
Fall Enrollment by Gender and Age	40
Fall Enrollment by Age	41

Enrollment Continued

Developmental Studies Enrollment	42
EAP Enrollment	43
Dual Enrollment	44
Fall Enrollment by Primary Major	45

Enrollment by Location

Fall Enrollment by State of Origin	47
Fall Enrollment by State of Origin (map)	48
Fall Enrollment by County of Origin	49
Fall Enrollment by County of Origin (map)	50

Credit Hours

Spring Breakdown of Credit Hours	51
Summer Breakdown of Credit Hours	52
Fall Breakdown of Credit Hours	53
Credit Hours by Academic Year	54
Credit Hours Produced by Campus	55

Academic Achievement

Degrees Offered	56
Degrees Conferred	57

Student Financial Aid

Student Financial Aid Paid Fiscal Year 2013-14	61
Student Financial Aid Paid FY 2009-10–FY 2013-14	62
Fall 2014 Students Paid Financial Aid	63

Institutional Information

Libraries	64
-----------	----

Florida SouthWestern State College was formally established in 1961 by the Florida Legislature as Edison Junior College. In 1965, the main campus was established on 80 acres in Fort Myers. Edison received accreditation from the Commission on Colleges of the Southern Association of Colleges and Schools (SACSCOC) in 1966. Since this initial accreditation, the College has undergone reaffirmation in 1971, 1981, 1991, 2001, and 2013. Accreditation at Level II membership was granted in 2005, and continued in 2007 following a site visit.

Edison Junior College was renamed Edison Community College in 1972 as a reflection of its expanded mission, and opened centers in Collier and Charlotte counties that same year. The College's service area represents tremendous diversity in both geography and economy. The Gulf Coast counties of Lee, Charlotte and Collier have experienced explosive population growth. In contrast, Glades and Hendry counties to the east remain rural, agrarian communities dependent on cattle and sugar cane production. Aligned with area growth, the College opened two permanent campuses, the Collier Campus in Naples and the Charlotte Campus in Punta Gorda. In 2009, the College moved into a 19-acre facility in La Belle known as the Hendry/Glades Center.

In 2001, the Florida Legislature authorized community colleges to offer limited baccalaureate degrees in areas of workforce need. Edison re-evaluated its mission statement and in 2006 enrolled 13 students into the Bachelors of Applied Science in Public Safety and Management program. In August 2008, following the creation of the new State College System and to support the College's addition of baccalaureate programs, the District Board of Trustees approved the name Edison State College. The mission of Florida SouthWestern State College reflects a commitment to all levels of educational attainment, our students, faculty and staff, and the community that we have served for over 50 years. The College now offers ten baccalaureate programs.

In 2013, the proposal for the new name, Florida SouthWestern State College, was brought before the college's District Board of Trustees for review and approval. In September of 2013, they unanimously approved the name. From there, the process began to seek legislative approval for the new name. Governor Rick Scott signed the bill in May and it became law July 1, 2014. The Lee Campus in Fort Myers was renamed the Thomas Edison Campus. Starting in Fall 2015, the Florida SouthWestern State College Buccaneers will return to competition with softball and baseball teams.

2014

- Carl McAloose is named Director, Intercollegiate Athletics, January
- Governor Rick Scott appoints Byron Donalds and Eric Loche, and reappoints Braxton Rhone and Chris Vernon to the college's District Board of Trustees, February
- Edison students elected President and Vice President of the Florida College System Student Government Association for the second consecutive year, April
- Florida Senate and House sub-committees approve name change to Florida SouthWestern State College, May
- Edison State College holds its final commencement ceremony under the Edison name, May
- Edison Collegiate High School, Lee Campus, holds first graduation ceremony, May
- Florida SouthWestern State College celebrates its new name with Spirit Day, July

2015

- Florida Southwestern State College (FSW) announced a partnership with Suncoast Credit Union to commence plans to build the Suncoast Credit Union Arena. Suncoast Credit Union leaders committed \$5 million to make this vision a reality, January

Florida SouthWestern State College is accredited by the Commission on Colleges of the Southern Association of Colleges and Schools to award associate and baccalaureate degrees. Contact the Commission on Colleges at 1866 Southern Lane, Decatur, Georgia 30033-4097 or call (404) 679-4500 for questions about the accreditation of Florida SouthWestern State College.

Normal inquiries about Florida SouthWestern State College, such as admission requirements, financial aid, educational programs, etc., should be addressed directly to Florida SouthWestern State College and not to the Commission's office.

In addition to accreditation by the Commission on Colleges of the Southern Association of Colleges and Schools, nine Florida SouthWestern State College programs are accredited by one of the following agencies.

- Cardiovascular Technology (AS): Commission on Accreditation of Allied Health Education Programs (CAAHEP) in conjunction with the Joint Review Committee in Cardiovascular Technology
- Dental Hygiene (AS): Commission on Dental Accreditation (CODA)
- Emergency Medical Services Technology (AS): Commission on Accreditation of Allied Health Education Programs (CAAHEP) in conjunction with the Committee on Accreditation of Educational Programs for the Emergency Medical Services Professions (CoAEMSP).
- Nursing (AS and BS): Accreditation Commission for Education in Nursing (ACEN)
- Radiologic Technology (AS): Joint Review Committee on Education in Radiologic Technology (JRCERT)
- Respiratory Care (AS): Commission on Accreditation for Respiratory Care (CoARC)
- Health Information Technology (AS): Commission on Accreditation for Health Informatics and Information Management Education (CAHIIM)
- Paramedic Certificate: Commission on Accreditation of Allied Health Education Programs (CAAHEP) in conjunction with the Committee on Accreditation of Educational Programs for Emergency Medical Services Professions (CoAEMSP)

Co-curricular

- Physical Therapy Assistant (AS): Commission on Accreditation in Physical Therapy Education (CAPTE) (via Inter-institutional agreement with Broward College)

VISION

Florida SouthWestern State College will be the catalyst for creating an innovative education system which provides accessible educational pathways that prepare students to be enlightened and productive citizens.

(Vision statement approved by the District Board of Trustees April 27th, 2010)

VALUES

We value student success, integrity, intellectual inquiry, and academic rigor.

(Values statement approved by the District Board of Trustees April 27th, 2010)

MISSION

The mission of Florida SouthWestern State College is to inspire learning; prepare a diverse population for creative and responsible participation in a global society; and serve as a leader for intellectual, economic, and cultural awareness in the community.

(Mission statement approved by the District Board of Trustees April 27th, 2010)

STRATEGIC DIRECTIONS

ENHANCE THE COLLEGE EXPERIENCE

1. Focus recruiting and admissions efforts
2. Create a robust residential life experience on Lee to support our residence hall
3. Explore the potential return of athletics as a component of student life / residential life
4. Increase scholarly activity vis-à-vis the creation of a sponsored programs office
5. Expand international education
6. Provide efficient processes that enhance or improve student, faculty and staff overall experience with the college

INCREASE COMMUNITY CONNECTIONS

1. Explore new workforce-related certificate and degree offerings including additional \$10,000 degree options
2. Fund new initiatives that hold promise for FSW
3. Emphasize the arts as a community resource
4. Refocus the direction for the FSW Foundation and enhance its role in the college
5. Increase service area coverage through regional vice presidents for economic and community development
6. Assess and respond to regional workforce needs

(Submitted to the Florida SouthWestern State College Board of Trustees July, 2014)

Map Key	
Walker Hall.....	Humanities Hall/
Medical Museum of History.....A	Bob Rauschenberg Gallery.....L
Nursing Building.....AA	BB Mann Performing Arts Hall.....M
Gresham Hall.....B	Royal Palm Hall.....N
Gresham Annex.....C	Sabot Hall.....O
White Hall.....D	Arca Hall.....P
Physical Plant-Central.....DD	Howard Hall.....Q
Facilities Annex.....E	Physical Plant-West.....R
Shipping and Receiving.....F	Tareni Student Services Hall.....S
Presidio Information.....	Edison Collegiate High School-Loc.....T
Technology Center.....G	Classroom Building.....U
Leonhardt Hall.....H	Lockmiller Child
Robinson Hall.....I	Development Center.....V
Rush Library.....J	Lighthouse Commons.....W
Hendry Hall.....K	Foundation & Alumni Center.....Z



Thomas Edison Campus
 8099 College Parkway • Fort Myers, Florida 33919
 (239) 489-9300
www.FSW.edu/lee



	Major Intersection
	Bus Stop
	Open Parking
	Other Parking



Collier Campus

7007 Lely Cultural Parkway • Naples, Florida 34113
 (239) 732-3700
www.FSW.edu/collier

Rattlesnake Hammock Road



Map Key	
Administration.....M	Business & Technology Center.....J
Admissions & Student Services.....M	Plant Operations.....H, I
Cashier.....M	NCEF Early Childhood Development Center.....K
Auditorium.....B	NCEF Pediatric Dental Center/ UF College of Dentistry.....L
Book Store.....M	Allen & Marla Weiss Health Sciences Hall.....N
Cafeteria.....C	Public Safety.....A
Student Center.....D	Student Life.....A
Library.....G	Career Services.....A
Classrooms.....A, B, E, F, G, I, N	ESC Foundation Office.....M
Computer Laboratory.....A, G	
Academic Success Center.....J	
Faculty Offices.....E, F, N	

Collier Boulevard CR 951



	Major Intersection
	Bus Stop
	Open Parking
	Other Parking

Lely Cultural Parkway

Grand Lely Drive

Charlotte Campus
26300 Airport Road • Punta Gorda, Florida 33950
(941) 367-5629
www.FSW.edu/charlotte



Map Key

Peoples Learning Resources.....B	Spitz Hall.....J
Classroom Building.....C	Collegiate High School.....K
Classroom Building.....D	Central Physical Plant.....L
Jones Hall.....E	Maintenance Building.....M
Moore Observatory.....F	Physical Plant Building.....N
Yarger Science Hall.....G	Student Activities Building.....O
Faculty Building.....H	





Hendry Glades Center
1092 E. Cowboy Way • LaBelle, Florida 33935
(863) 674-0408
www.FSW.edu/hendryglades



Map Key

Admissions & Student Services.....A
Classroom.....B

P Open Parking

P Other Parking

Florida SouthWestern State College is governed by its District Board of Trustees composed of nine representatives from Charlotte, Collier, Hendry, Glades, and Lee counties. The first District Board of Trustees was appointed in 1968 by Governor Claude Kirk. The members are appointed to four-year terms by the Governor of Florida.

Board of Trustees Members

Sankey “Eddie” Webb III, MBA, CPA, Charlotte County Chairman

Brian Chapman, Jr., B.A., Lee County Vice Chairman

Marjorie Starnes-Bilotti, J.D., Lee County Chairman

Tristan Chapman, MBA, Hendry County

Byron Donalds, B.S., Collier County

Eric Loche, B.A., Charlotte County

Julia G. Perry, B.A.E., Glades County

Braxton C. Rhone, B.S., Lee County

Christopher T. Vernon, J.D., Collier County



Dr. Jeffery Allbritten returned to Florida SouthWestern State College on July 31, 2012 as the College's Fourth President after being unanimously selected by the Board of Trustees on June 1, 2012. He served as President of Macon State College, Macon, GA from 2011 - 2012.

During his tenure as the president of the Collier Campus of Edison State College from 2003 - 2011, Dr. Allbritten successfully expanded enrollment and course offerings, as well as the campus itself. Working diligently to cultivate community and corporate partnerships, Dr. Allbritten was instrumental in the expansion of campus facilities to accommodate innovative programming. In 2008, the University of Florida NCEF Pediatric Dental Center and the NCEF Early Childhood Development Center opened on the Edison State College Collier Campus. In 2010, ground was broken on two important facilities: The Student Services Building and the Allen & Marla Weiss Health Sciences Hall. These buildings opened in February 2012. Also in 2010, Dr. Allbritten advanced an application for the creation of a STEM (Science, Technology, Engineering, and Math) focused charter school to the Collier County School Board, which was unanimously approved.

Dr. Allbritten has been very active in the community, serving on a number of boards, including the Board of Directors for the former Economic Development Council of Collier County, the Greater Naples Chamber of Commerce and the German-American Business Chamber of Florida. He was an Advisory Board Member for Eden Florida and the Southwest Florida Holocaust Museum. He also served on the Editorial Board for *Business Currents* Magazine.

Prior to his appointment at the Collier County Campus of Edison State College, Dr. Allbritten was the director of Pines Center Campus of Broward College, a comprehensive community college serving Broward County in southeast Florida, from 2000-2003.

Dr. Allbritten served as dean of Liberal Arts and Sciences at Florida State College at Jacksonville, the second largest college in Florida with 80,000 students, from 1999 to 2000. Prior to his arrival in Florida, he was associate dean of the College of Basic and Applied Sciences at Middle Tennessee State University, Murfreesboro, from 1995 to 1999.

Dr. Allbritten holds a Doctor of Arts degree in chemistry from Middle Tennessee State University, Murfreesboro, a master of science degree in mathematics from Murray State University, Murray, KY, and a bachelor of science degree in chemistry, also conferred by Murray State University.

President's Office

Dr. Jeffery Allbritten	President
Dr. Henry Peel	Chief of Staff
Dr. Patricia Land	Regional Vice President, Economic & Community Development/Charlotte Campus President
Dr. Robert Jones	Regional Vice President, Economic & Community Development/Collier Campus President
Mr. Matthew Holliday	Director, Governmental Relations
Mr. Mark Lupe	General Counsel

Academic Affairs

Dr. Denis Wright	Provost and Vice President for Academic Affairs
Dr. Laura Weir	Assistant Vice President for Academic Affairs
Dr. Eileen DeLuca	Assistant Vice President for Academic Affairs
Dr. Emery Alford	Dean, School of Arts, Humanities, and Social Sciences
Dr. Theo Koupelis	Dean, School of Pure and Applied Sciences
Dr. John Meyer	Dean, School of Business and Technology
Dr. Erin Harrel	Dean, School of Education
Dr. Marie Collins	Dean, School of Health Professions
Dr. Mary Myers	Dean, Division of Teaching Innovation, Faculty Development and Online Learning
Mr. William Shuluk	Head Librarian, Libraries
Ms. Michelle Fanslau	Associate Dean, Baccalaureate Programs and Academic Services
Mr. Jeff Gibbs	Director, Hendry Glades Center
Mr. Garnett Salmon	Registrar
Ms. Monica Moore	Director, Academic Support Programs
Ms. Cat Fuller	Director, International Education
Ms. Lynne Crandall	Director, Simulation Education
Mr. Robert Anderson	Director, Online Learning, Teaching and Innovation
Ms. Melissa Rizzuto	Director, Faculty Development and Training
Ms. Jade Dellinger	Director, Rauschenberg Gallery
Ms. Wendy Athens	Director, Design and Development

Advancement

Dr. Louis Traina	Vice President, Institutional Advancement and Executive Director of the Foundation
Ms. Teresa Morgenstern	Director, Communications and Public Information Officer
Mr. Kevin Miller	Senior Director, Administration and Development
Mr. Paul Bova	Senior Director, Development
Ms. Arlene Knox	Senior Director, Development
Vacant	Director, Alumni Relations
Dr. Joseph Kramp	Director, Development
Ms. Nina Gray	Director, Development, PT

Administrative Services

Dr. Gina Doeble	Vice President, Administrative Services
Mr. Tobias Discenza	Assistant Vice President, Financial Services
Mr. Dwain Keddo	Bursar
Ms. Kathleen Porter	Controller
Ms. Debra Kivel	Director, DSO Finance
Ms. Judy Pultro	Director, Auxiliary Services
Ms. Catherine Morgan	Director, Student Financial Aid
Mr. Rick Parfitt	Director, Public Safety
Mr. Steve Nice	Director, Facilities Planning and Development
Mr. Justin Long	Director, Housing and Residence Life Operations
Ms. Susan Bronstein	Director, Human Resources
Ms. Mercy Gonzalez	Payroll Manager
Ms. Lisa Tudor	Director, Procurement Services

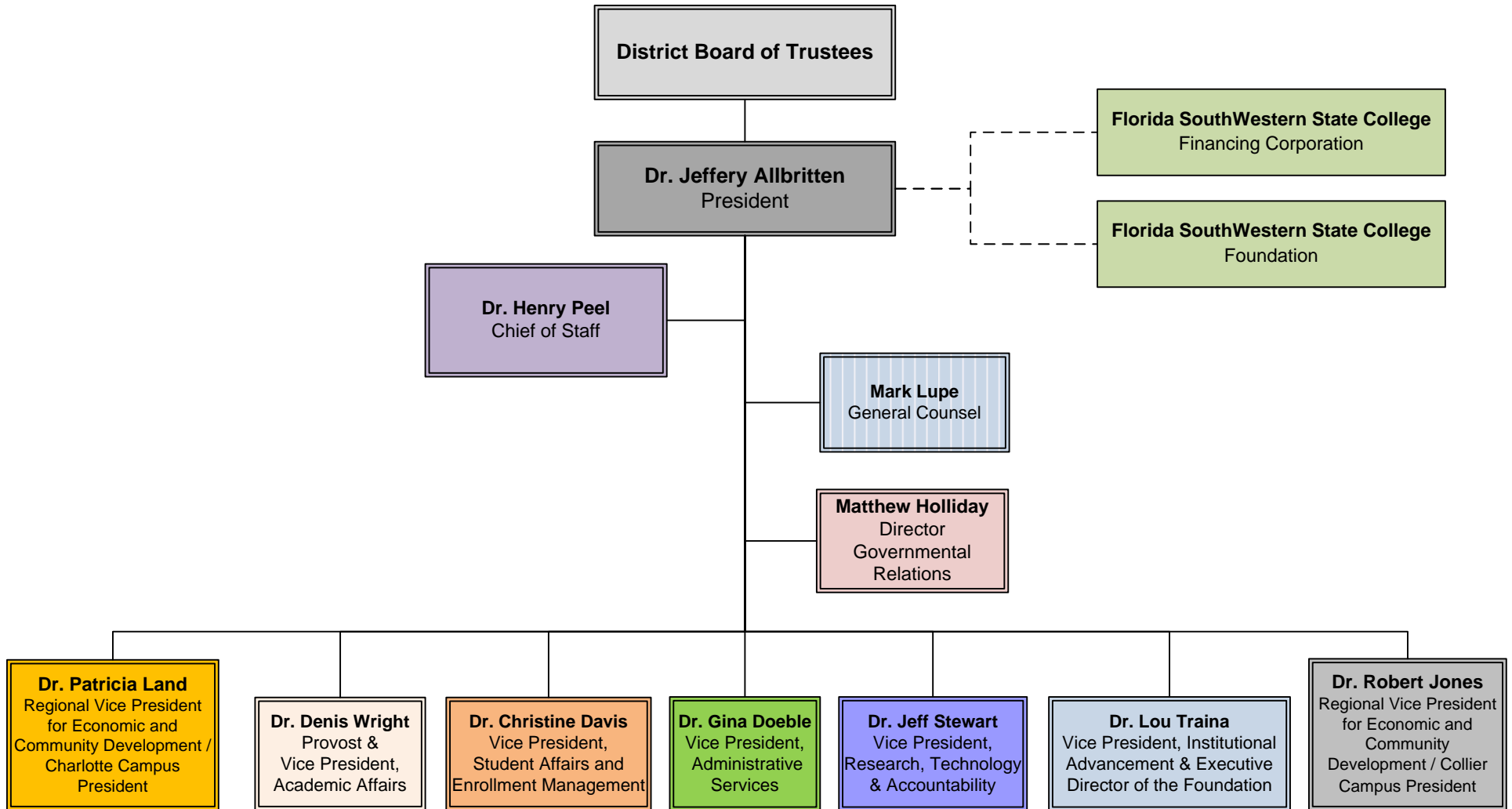
Student Affairs

Dr. Christine Davis	Vice President, Student Affairs and Enrollment Management
Dr. Waldon Hagan	Assistant Vice President, Student Affairs and Dean of Students
Ms. Laura Antczak	Assistant Vice President, Enrollment and Success
Dr. Kristi Rickman	Associate Dean, Student Affairs and Director of Campus Life
Ms. Gail Murphy	Collier Campus Dean, Student Affairs and Academic Services
Dr. Christy Gilfert	Charlotte Campus Dean, Student Affairs and Academic Services
Mr. Mark Bukowski	Director, Admissions
Ms. Angela Hartsell	Director, Adaptive Services
Ms. Sarah Borland-Liekweg	Director, TRiO Programs
Ms. Sylvia Carter	Director, Upward Bound
Mr. Aaron Haack	Director, New Student Programs
Mr. Andrae Jones	Director, Academic Advising

Research, Technology and Accountability

Dr. Jeff Stewart	Vice President, Research, Technology and Accountability
Mr. Jason Dudley	Chief Information Officer, Information Technology and Enterprise Applications
Dr. Susan Hibbard	Director, Effectiveness and Accountability
Ms. Abby Willcox	Director, Institutional Research
Mr. Carl McAloose	Director, Intercollegiate Athletics

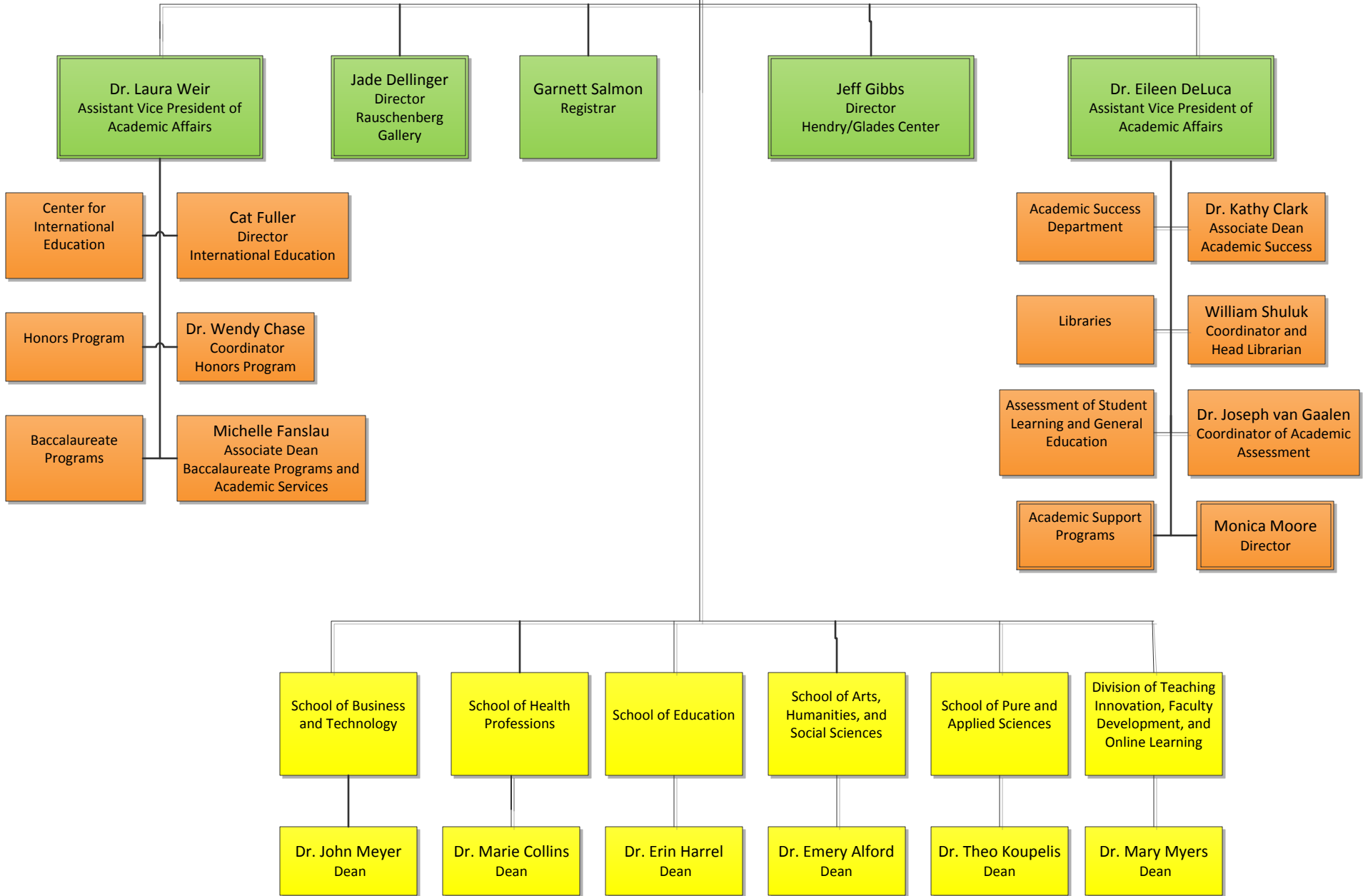
Executive Leadership



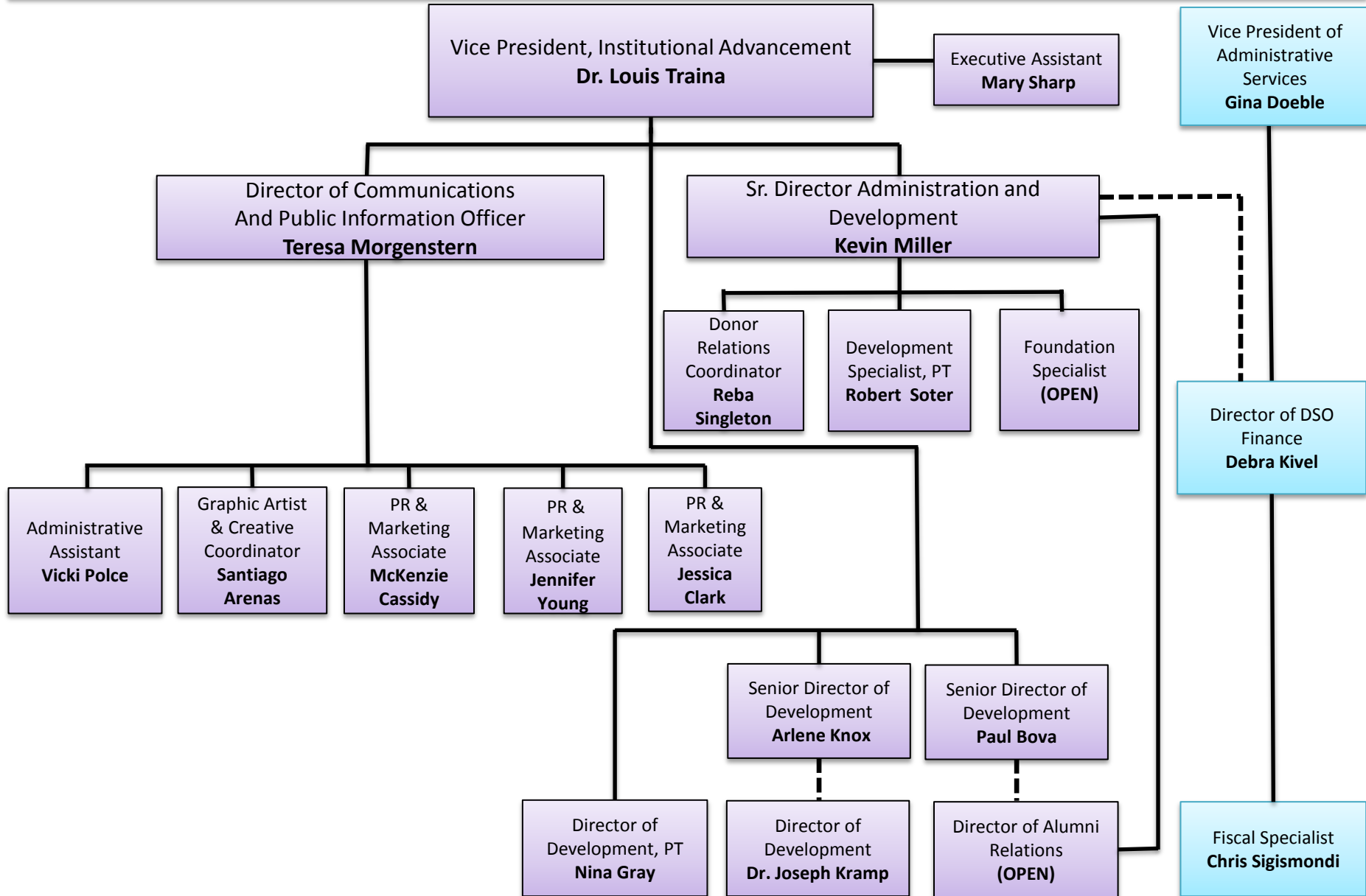
January 1, 2015

Academic Affairs
Organizational Chart
Summer, 2014

Dr. Denis G. Wright
Provost and Vice President of Academic Affairs



Florida SouthWestern State College Advancement Division Organizational Chart

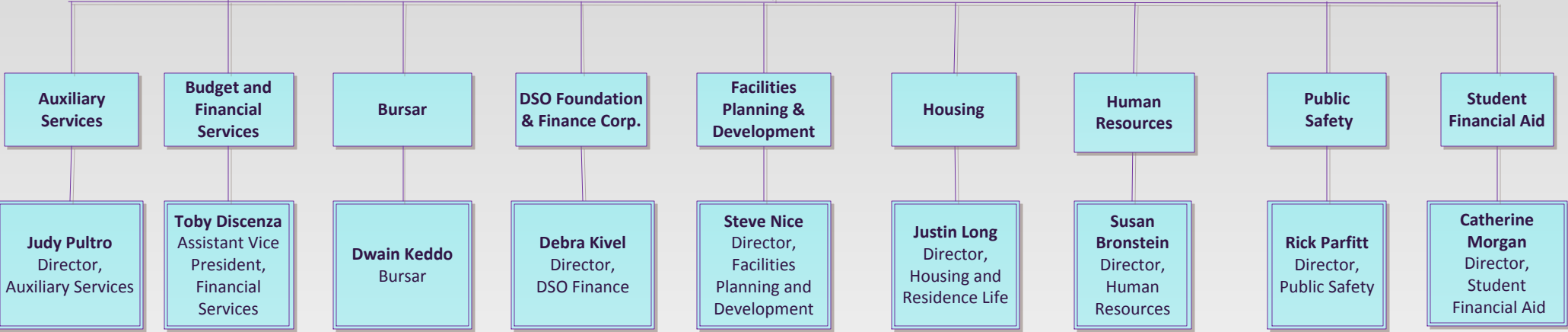


ADMINISTRATIVE SERVICES



Dr. Gina Doeble
Vice President,
Administrative Services

Vicki Dryden
Executive Assistant



Dr. Christine Davis
VP, Student Affairs & Enrollment Management

Michelle King
Executive Assistant

Dr. Waldon Hagan
Asst. VP, Student Affairs

Danielle Martinez
Manager, Student Affairs
Operations

Angela Hartsell
Adaptive Services

Dr. Christy Gilfert
Campus Dean, Student Affairs &
Academic Services

Kristi Rickman
Assoc. Dean, Students Affairs &
Director, Campus Life

Laura Antczak
Asst. VP, Enrollment &
Student Success

Christina Seado-Vasquez
Asst. Director

Gail Murphy
Campus Dean, Student Affairs &
Academic Services

Charlotte Campus
Student Services

Campus Life

Student Conduct

Career Services

Counseling Services

Leadership and Civic
Engagement

New Student Programs

Admissions

TRiO Programs

Academic Advising

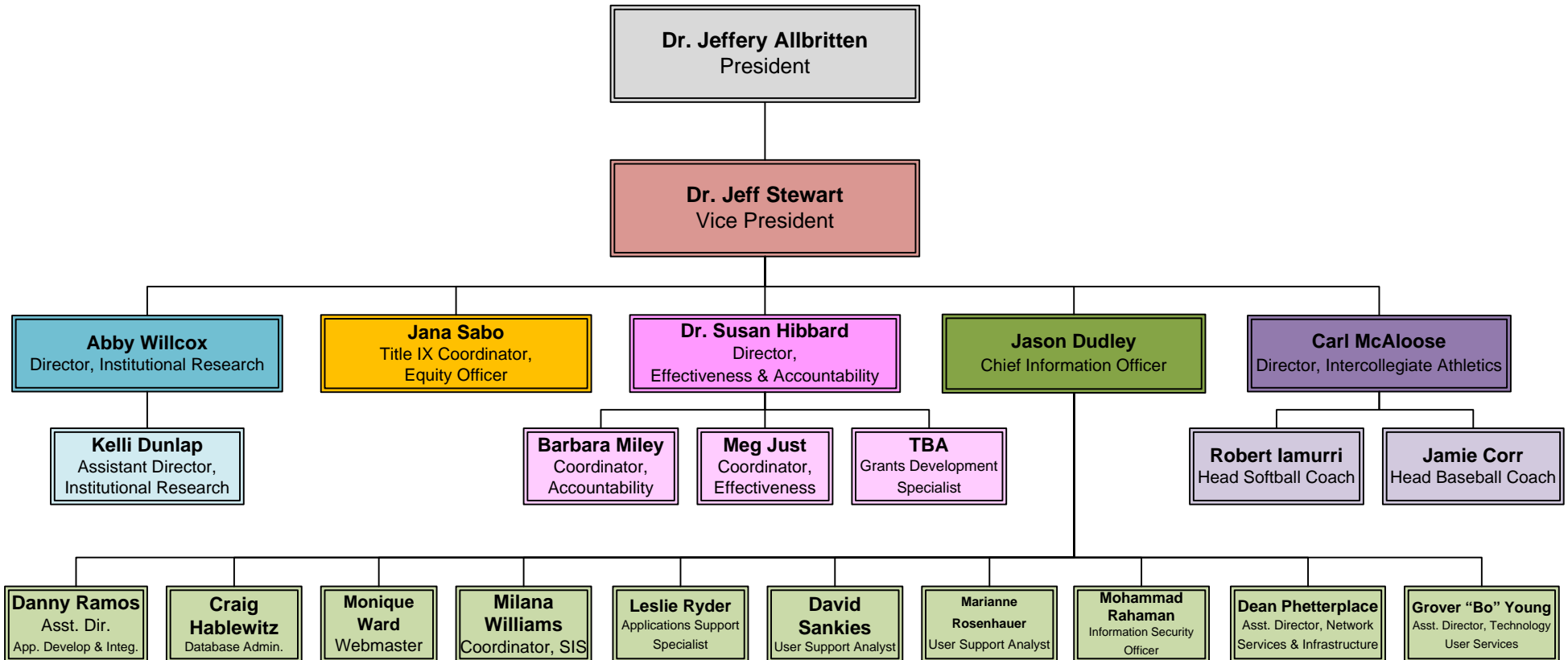
International Student Services

Testing & Assessment

Hendry/Glades Center
Student Services

Collier Campus
Student Services

Research, Technology, & Accountability



January 1, 2015

Florida SouthWestern State College Foundation, Inc.

Executive Officers

Tammy Surratt, Chairman
Bruce Schultz, Vice Chairman
Dilman Thomas, Treasurer
Charlotte Miller, Secretary
Marjorie Starnes-Bilotti, Board of Trustees Designee
Gina Doeble, College Administration Representative
Ellen Webb, Campus Co-Chairman
Jim Nolan, Campus Chairman
Carey Soud, Campus Chairman
Andy Tilton, Campus Co-Chairman
Alan Hiliker, Campus Chairman

Directors

Melissa Congress
Cort Frohlich
J. Dudley Goodlette
Carl P. Grissom
Marcia Hobe
Anne Keesling
Deanne B. Kyle
Richard Lewis
Duncan MacDonald
Mary Lee Mann
Richard A. Penix
Jill Ciccarelli Rapps
Mark Schlehr
Victoria B. Stephan
Deborah Stewart
Jayne Young

Honorary Lifetime Directors

Bernese B. Davis
Craig R. Folk
Ann K. Gateff
Susan C. Kyle
Mavis Miller
Beverly McNew
Holland T. Salley
John T. Seaman Jr.
Madeleine Taeni
Lynne Taylor

Ex Officio

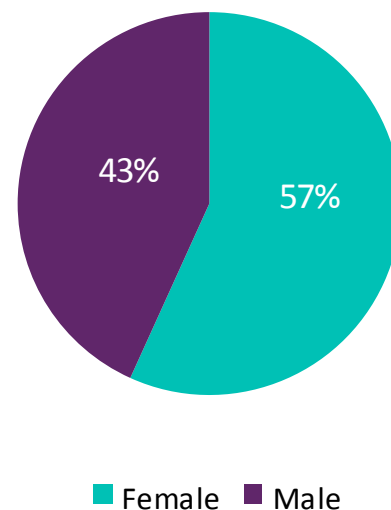
Dr. Jeffery S. Allbritten, College President
Dr. Robert R. Jones, Vice President for Economic and Community Development
Dr. Patricia Land, Vice President for Economic and Community Development

Fall 2014 Full-Time Faculty and Staff Profile

	<u>n</u>
Primarily Instruction	170
Clerical/Secretarial	99
Executive/Administrative/Managerial	41
Other Professional	148
Service/Maintenance	33
Skilled Crafts	0
Technical/Paraprofessional	35
Other	0
Total	526

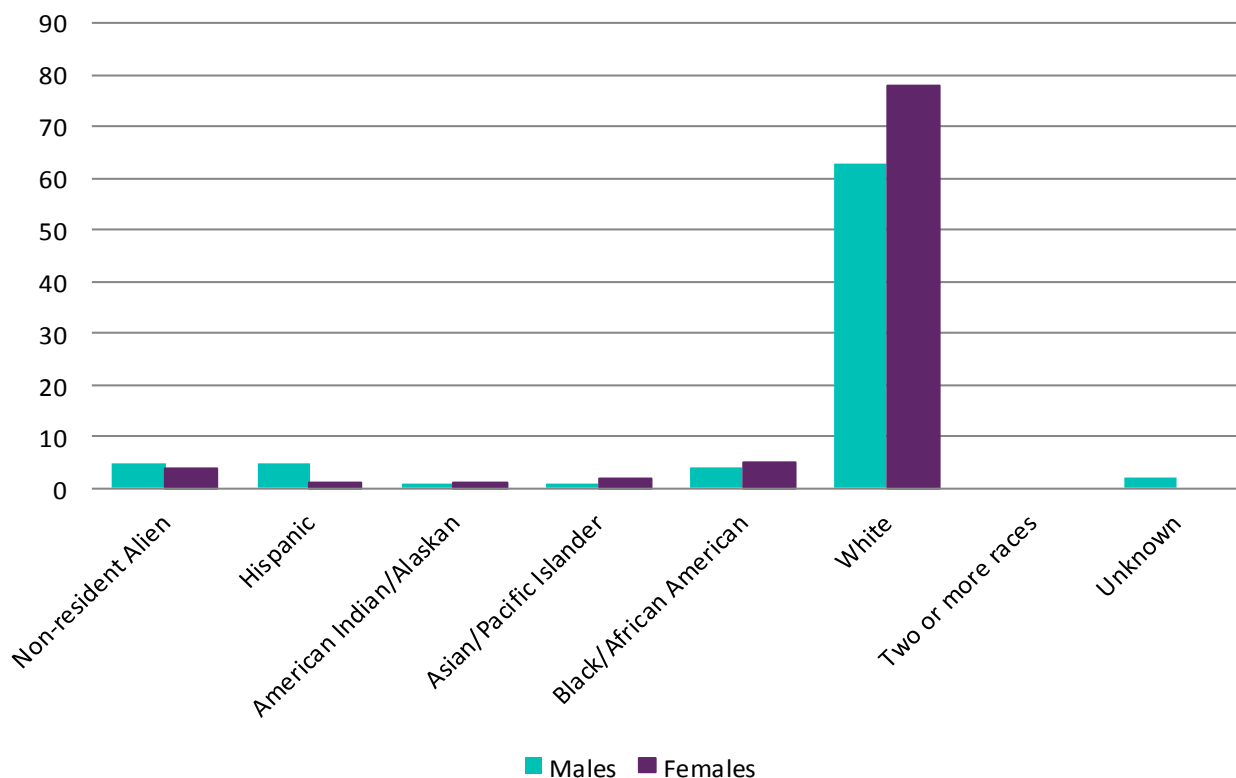
Race/Ethnicity and Gender

Non-resident Alien	11
Hispanic/Latino	36
American Indian/Alaskan	4
Asian	7
Black/African American	34
Native Hawaiian/Pacific Islander	0
White	428
Two or more races	2
Unknown	4



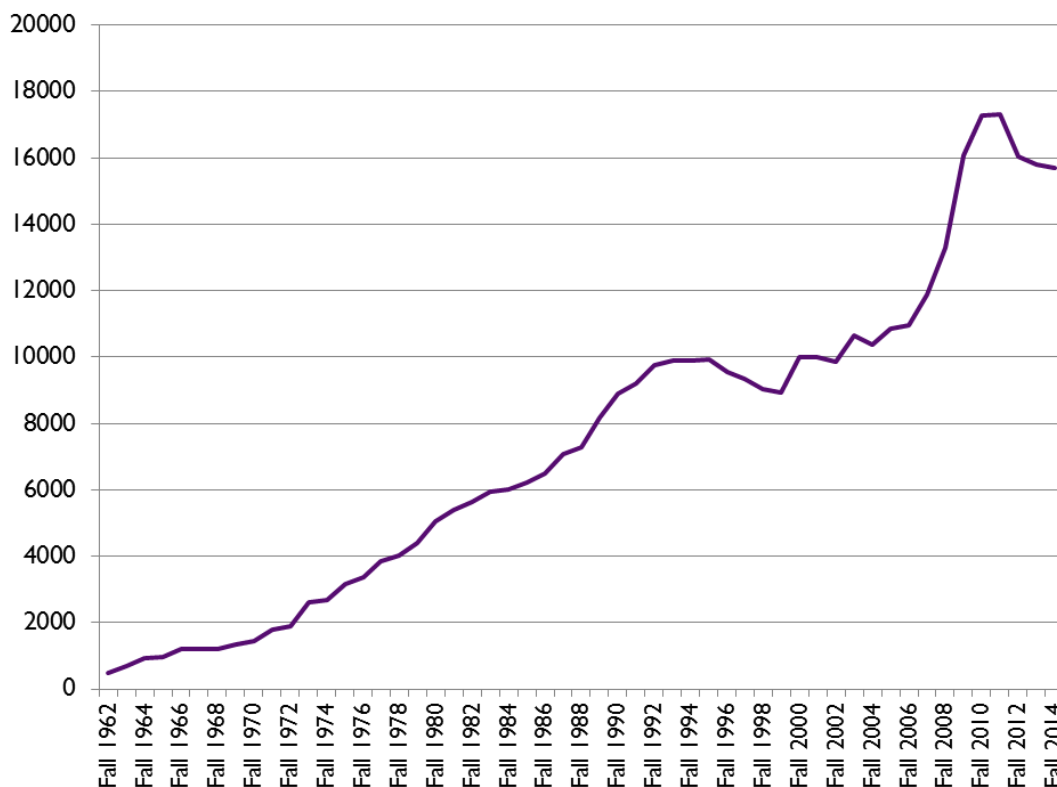
Full-time Instructional Faculty

	Fall 2012	Fall 2013	Fall 2014	3 Year % Change
Female	96	93	91	-5.2%
Male	73	77	81	11.0%
Non-resident Alien	8	9	9	12.5%
Hispanic	6	5	6	0.0%
American Indian/Alaskan	1	2	2	100.0%
Asian/Pacific Islander	2	1	3	50.0%
Black/African American	8	8	9	12.5%
White	142	142	141	-0.7%
Two or more races	0	0	0	n/a
Unknown	2	3	2	0.0%



Fall Historical Enrollment

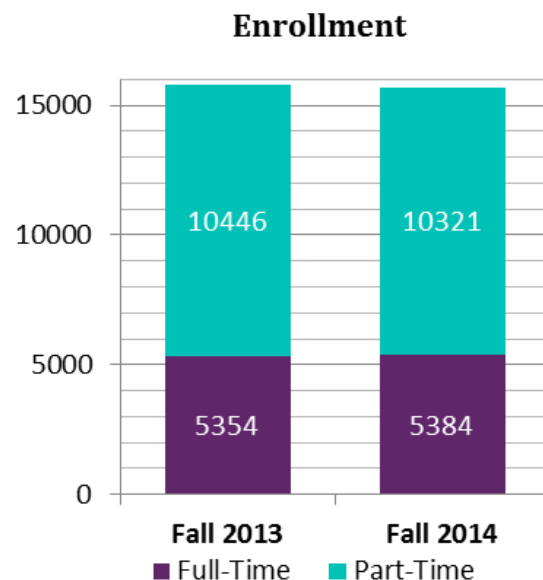
Term	Enrollment	Term	Enrollment	Term	Enrollment	Term	Enrollment
Fall 1962	498	Fall 1976	3379	Fall 1990	8907	Fall 2004	10383
Fall 1963	674	Fall 1977	3831	Fall 1991	9190	Fall 2005	10866
Fall 1964	940	Fall 1978	4009	Fall 1992	9740	Fall 2006	10964
Fall 1965	953	Fall 1979	4383	Fall 1993	9909	Fall 2007	11898
Fall 1966	1197	Fall 1980	5066	Fall 1994	9904	Fall 2008	13309
Fall 1967	1211	Fall 1981	5379	Fall 1995	9924	Fall 2009	16077
Fall 1968	1194	Fall 1982	5647	Fall 1996	9551	Fall 2010	17280
Fall 1969	1342	Fall 1983	5947	Fall 1997	9334	Fall 2011	17312
Fall 1970	1427	Fall 1984	6022	Fall 1998	9044	Fall 2012	16052
Fall 1971	1779	Fall 1985	6233	Fall 1999	8933	Fall 2013	15800
Fall 1972	1898	Fall 1986	6483	Fall 2000	8919	Fall 2014	15705
Fall 1973	2623	Fall 1987	7088	Fall 2001	9057		
Fall 1974	2672	Fall 1988	7283	Fall 2002	9871		
Fall 1975	3154	Fall 1989	8171	Fall 2003	10641		



Fall 2014 Enrollment

Enrollment	Fall 2013		Fall 2014		Percent Change
	n	%	n	%	
Total	15800	100.0%	15705	100.0%	-0.6%
Full-Time	5354	33.9%	5384	34.3%	0.6%
Part-Time	10446	66.1%	10321	65.7%	-1.2%
FTE*	4639	---	4475	---	-3.5%

Credit Hour Production	Fall 2014		FTE* per Campus	Fall 2014
	n	%		
Total	134262	100.0%	Total	4475
Lee	71262	53.1%	Lee	2375
Collier	23170	17.3%	Collier	772
Charlotte	11583	8.6%	Charlotte	386
Hendry/Glades	2669	2.0%	Hendry/Glades	89
FSW Online	25578	19.1%	FSW Online	853



Gender and Race/Ethnicity	Hispanic	Amer Ind/ Nat Alask	Asian	Black/ Afr Amer	Nat Haw/ Pac Islld	White	Two or More	Unknown	Total
Female	2597	28	166	1090	18	4993	153	444	9489
Male	1646	23	127	700	8	3214	125	286	6129
Unknown	33	0	0	13	1	29	0	11	87
Total	4276	51	293	1803	27	8236	278	741	15705

Gender and Age	< 18	18 - 19	20 - 21	22 - 24	25 - 34	35 - 44	45 - 54	55 +	Total
Female	1458	2123	1400	1202	1858	853	476	119	9489
Male	813	1512	1214	882	1091	382	187	48	6129
Unknown	4	12	22	15	21	11	1	1	87
Total	2275	3647	2636	2099	2970	1246	664	168	15705

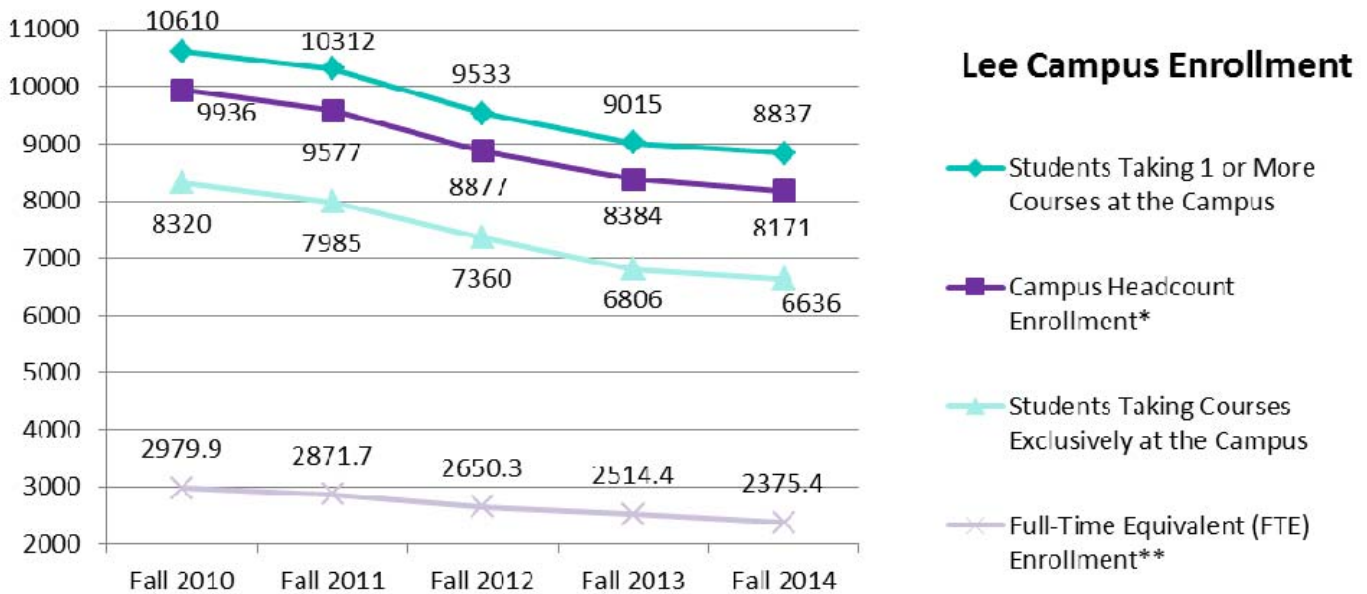
Top 10 Majors	n	Top 10 FL Counties	n	Top 10 Courses	n
1. AA General Studies	9488	1. Lee	8757	1. ENC 1101	3540
2. AS Pre-Nursing	1521	2. Collier	3939	2. SLS 1515	2531
3. Non-Degree Seeking	478	3. Charlotte	1593	3. MAT 1033	2299
4. BAS Supervision & Mgmt	420	4. Hendry	403	4. MAC 1105	1761
5. AS Nursing Basic Prgm	376	5. Sarasota	226	5. PSY 2012	1487
6. AS Business/Admin Mgmt	361	6. Broward	86	6. ENC 1102	1228
7. AS Pre-Radiology Tech	303	7. DeSoto	69	7. BSC 1010	1102
8. BS Nursing	284	8. Miami-Dade	69	8. BSC 1010L	1053
9. AS Pre-Dental Hygiene	240	9. Palm Beach	46	9. MAT 0057	1012
10. AS Criminal Justice Tech	209	10. Glades	36	10. SPC 1017	999

Source: Local Banner data

Fall 2014 Lee Campus Profile

Enrollment

	Fall 2010	Fall 2011	Fall 2012	Fall 2013	Fall 2014
Campus Headcount Enrollment*	9936	9577	8877	8384	8171
Percentage of Total FSW State College Headcount	57.5%	55.3%	55.3%	53.1%	52.0%
Students Taking 1 or More Courses at the Campus	10610	10312	9533	9015	8837
Students Taking Courses Exclusively at the Campus	8320	7985	7360	6806	6636
Full-Time Equivalent (FTE) Enrollment**	2979.9	2871.7	2650.3	2514.4	2375.4



Courses & SCH Production

	Fall 2010	Fall 2011	Fall 2012	Fall 2013	Fall 2014
Number of Course Sections	1177	1162	1142	1099	1100
Total Duplicated Enrollment in Course Sections	28877	27909	26046	24725	24382
Mean Number of Students Per Section	24.5	24.0	22.8	22.5	22.2
Student Credit Hour Production	89396	86152	79455	75432	71262

Fall 2014 Student Credit Hour Production by Level and Part of Term

	Lower	Upper	Total
Total Student Credit Hour Production	67892	3370	71262
Full Term (1)	63596	2797	66393
Mini-A	697	300	997
Mini-B	1334	273	1607
Special C	685	0	685
Dual Enrollment	1580	0	1580

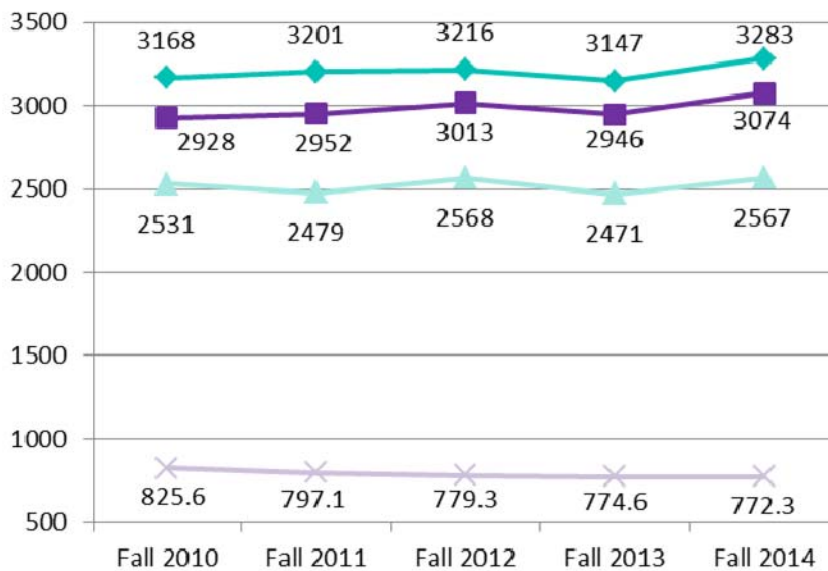
*Students are assigned campus headcount based on where an individual student is taking the maximum number of credit hours. If credit hours are equal at multiple campuses, the student's headcount is assigned to the campus with the lowest headcount enrollment from the prior term. If credit hours are equal between a campus and FSW Online, the headcount is assigned to the physical campus.

**Total student credit hour production by campus divided by 30

Fall 2014 Collier Campus Profile

Enrollment

	Fall 2010	Fall 2011	Fall 2012	Fall 2013	Fall 2014
Campus Headcount Enrollment*	2928	2952	3013	2946	3074
Percentage of Total FSW State College Headcount	16.9%	17.1%	18.8%	18.6%	19.6%
Students Taking 1 or More Courses at the Campus	3168	3201	3216	3147	3283
Students Taking Courses Exclusively at the Campus	2531	2479	2568	2471	2567
Full-Time Equivalent (FTE) Enrollment**	825.6	797.1	779.3	774.6	772.3



Collier Campus Enrollment

- ◆ Students Taking 1 or More Courses at the Campus
- Campus Headcount Enrollment*
- ▲ Students Taking Courses Exclusively at the Campus
- × Full-Time Equivalent (FTE) Enrollment**

Courses & SCH Production

	Fall 2010	Fall 2011	Fall 2012	Fall 2013	Fall 2014
Number of Course Sections	350	343	355	357	368
Total Duplicated Enrollment in Course Sections	8018	7720	7727	7615	7933
Mean Number of Students Per Section	22.9	22.5	21.8	21.3	21.6
Student Credit Hour Production	24768	23912	23380	23239	23170

Fall 2014 Student Credit Hour Production by Level and Part of Term

	Lower	Upper	Total
Total Student Credit Hour Production	23113	57	23170
Full Term (1)	20334	0	20334
Mini-A	170	36	206
Mini-B	269	21	290
Special C	666	0	666
Dual Enrollment	1674	0	1674

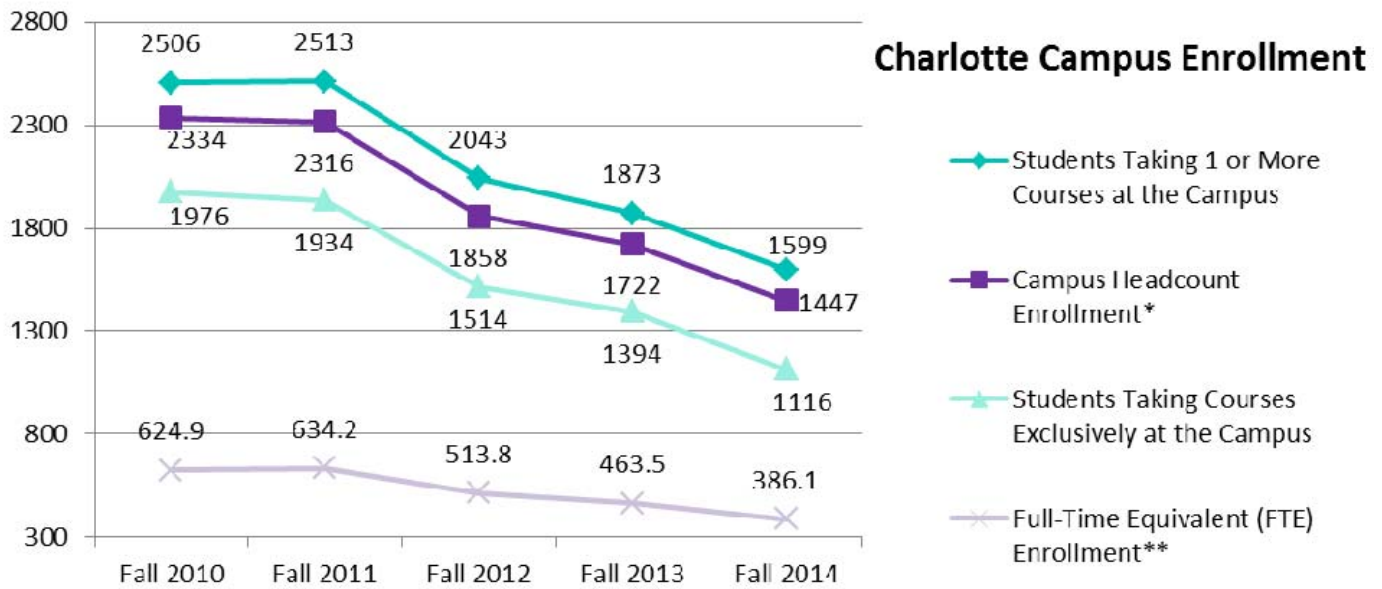
*Students are assigned campus headcount based on where an individual student is taking the maximum number of credit hours. If credit hours are equal at multiple campuses, the student's headcount is assigned to the campus with the lowest headcount enrollment from the prior term. If credit hours are equal between a campus and FSW Online, the headcount is assigned to the physical campus.

**Total student credit hour production by campus divided by 30

Fall 2014 Charlotte Campus Profile

Enrollment

	Fall 2010	Fall 2011	Fall 2012	Fall 2013	Fall 2014
Campus Headcount Enrollment*	2334	2316	1858	1722	1447
Percentage of Total FSW State College Headcount	13.5%	13.4%	11.6%	10.9%	9.2%
Students Taking 1 or More Courses at the Campus	2506	2513	2043	1873	1599
Students Taking Courses Exclusively at the Campus	1976	1934	1514	1394	1116
Full-Time Equivalent (FTE) Enrollment**	624.9	634.2	513.8	463.5	386.1



Courses & SCH Production

	Fall 2010	Fall 2011	Fall 2012	Fall 2013	Fall 2014
Number of Course Sections	261	276	246	238	193
Total Duplicated Enrollment in Course Sections	6189	6249	5191	4662	4020
Mean Number of Students Per Section	23.7	22.6	21.1	19.6	20.8
Student Credit Hour Production	18748	19025	15413	13905	11583

Fall 2014 Student Credit Hour Production by Level and Part of Term

	Lower	Upper	Total
Total Student Credit Hour Production	11408	175	11583
Full Term (1)	9880	139	10019
Mini-A	128	0	128
Mini-B	128	36	164
Special C	156	0	156
Dual Enrollment	1116	0	1116

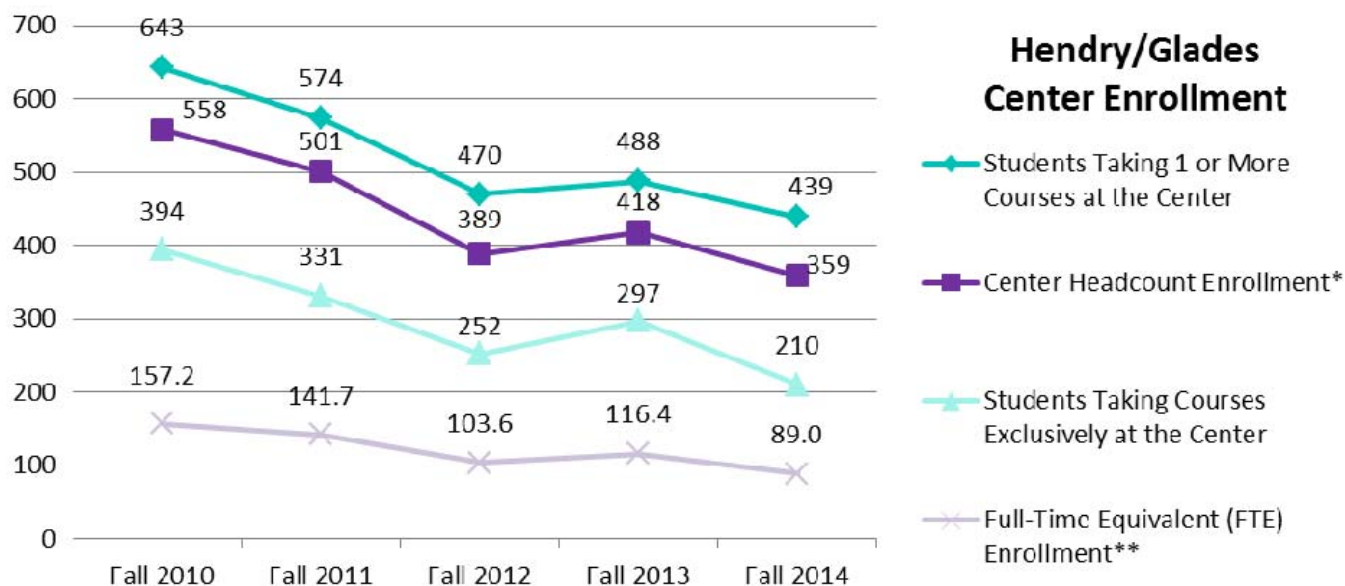
*Students are assigned campus headcount based on where an individual student is taking the maximum number of credit hours. If credit hours are equal at multiple campuses, the student's headcount is assigned to the campus with the lowest headcount enrollment from the prior term. If credit hours are equal between a campus and FSW Online, the headcount is assigned to the physical campus.

**Total student credit hour production by campus divided by 30

Fall 2014 Hendry/Glades Center Profile

Enrollment

	Fall 2010	Fall 2011	Fall 2012	Fall 2013	Fall 2014
Center Headcount Enrollment*	558	501	389	418	359
Percentage of Total FSW State College Headcount	3.2%	2.9%	2.4%	2.6%	2.3%
Students Taking 1 or More Courses at the Center	643	574	470	488	439
Students Taking Courses Exclusively at the Center	394	331	252	297	210
Full-Time Equivalent (FTE) Enrollment**	157.2	141.7	103.6	116.4	89.0



Courses & SCH Production

	Fall 2010	Fall 2011	Fall 2012	Fall 2013	Fall 2014
Number of Course Sections	77	62	60	63	53
Total Duplicated Enrollment in Course Sections	1471	1319	995	1107	901
Mean Number of Students Per Section	19.1	21.3	16.6	17.6	17.1
Student Credit Hour Production	4715	4251	3108	3491	2669

Fall 2014 Student Credit Hour Production by Level and Part of Term

	Lower	Upper	Total
Total Student Credit Hour Production	2669	0	2669
Full Term (1)	2549	0	2549
Mini-A	0	0	0
Mini-B	0	0	0
Special C	0	0	0
Dual Enrollment	120	0	120

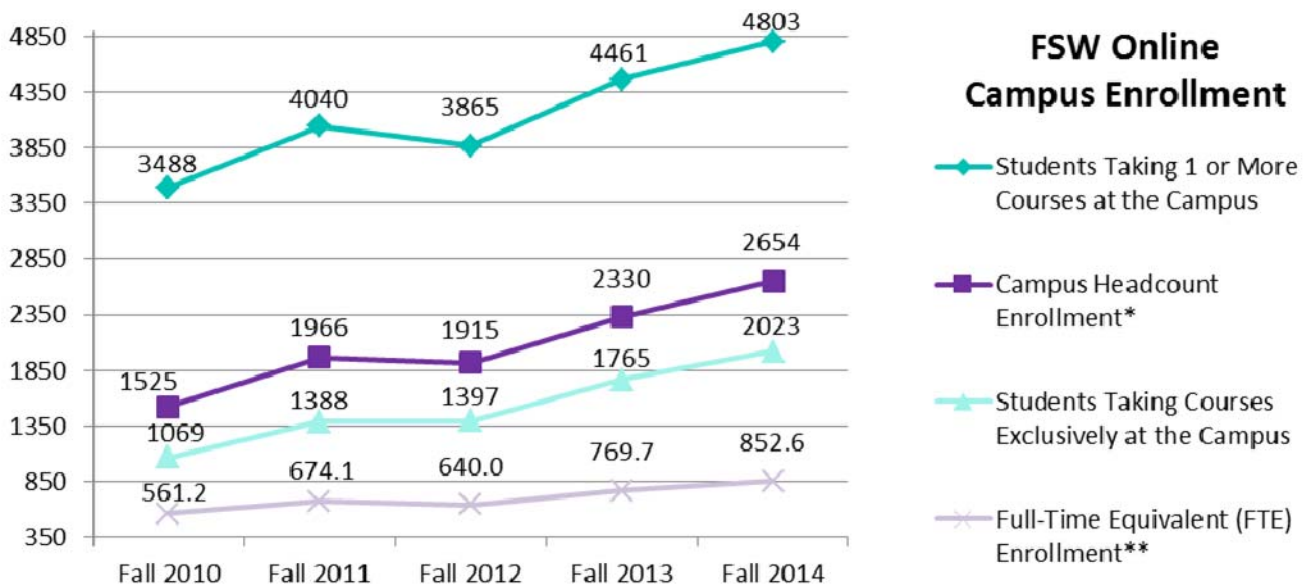
*Students are assigned campus headcount based on where an individual student is taking the maximum number of credit hours. If credit hours are equal at multiple campuses, the student's headcount is assigned to the campus with the lowest headcount enrollment from the prior term. If credit hours are equal between a campus and FSW Online, the headcount is assigned to the physical campus.

**Total student credit hour production by campus divided by 30

Fall 2014 FSW Online Campus Profile

Enrollment

	Fall 2010	Fall 2011	Fall 2012	Fall 2013	Fall 2014
Campus Headcount Enrollment*	1525	1966	1915	2330	2654
Percentage of Total FSW State College Headcount	8.8%	11.4%	11.9%	14.7%	16.9%
Students Taking 1 or More Courses at the Campus	3488	4040	3865	4461	4803
Students Taking Courses Exclusively at the Campus	1069	1388	1397	1765	2023
Full-Time Equivalent (FTE) Enrollment**	561.2	674.1	640.0	769.7	852.6



Courses & SCH Production

	Fall 2010	Fall 2011	Fall 2012	Fall 2013	Fall 2014
Number of Course Sections	244	309	285	337	360
Total Duplicated Enrollment in Course Sections	5710	6877	6549	7838	8701
Mean Number of Students Per Section	23.4	22.3	23.0	23.3	24.1
Student Credit Hour Production	16837	20224	19201	23091	25578

Fall 2014 Student Credit Hour Production by Level and Part of Term

	Lower	Upper	Total
Total Student Credit Hour Production	21007	4571	25578
Full Term (1)	19486	636	20122
Mini-A	492	2050	2542
Mini-B	876	1885	2761
Special C	153	0	153
Dual Enrollment	0	0	0

*Students are assigned campus headcount based on where an individual student is taking the maximum number of credit hours. If credit hours are equal at multiple campuses, the student's headcount is assigned to the campus with the lowest headcount enrollment from the prior term. If credit hours are equal between a campus and FSW Online, the headcount is assigned to the physical campus.

**Total student credit hour production by campus divided by 30

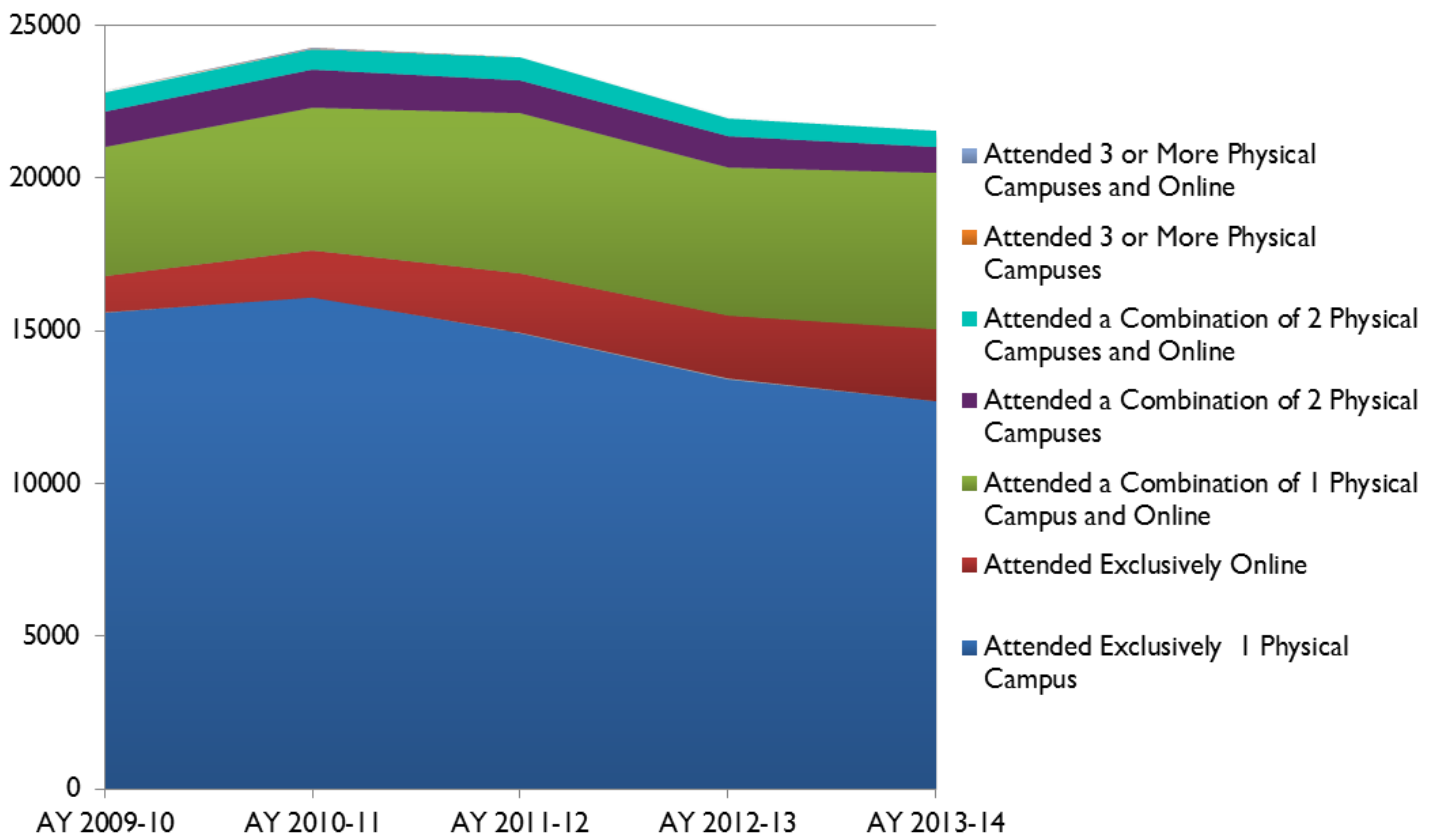
Academic Year Enrollment by Attendance

AY 2009-10 AY 2010-11 AY 2011-12 AY 2012-13 AY 2013-14

Unduplicated Enrollment	22878	24290	23993	22029	21573
Attended Exclusively 1 Physical Campus	15604	16123	14931	13429	12678
Attended Exclusively Online	1198	1536	1957	2072	2381
Attended a Combination of 1 Physical Campus and Online	4214	4656	5257	4868	5130
Attended a Combination of 2 Physical Campuses	1182	1257	1077	1011	829
Attended a Combination of 2 Physical Campuses and Online	616	652	714	593	527
Attended 3 or More Physical Campuses	38	34	32	33	18
Attended 3 or More Physical Campuses and Online	26	32	25	24	10

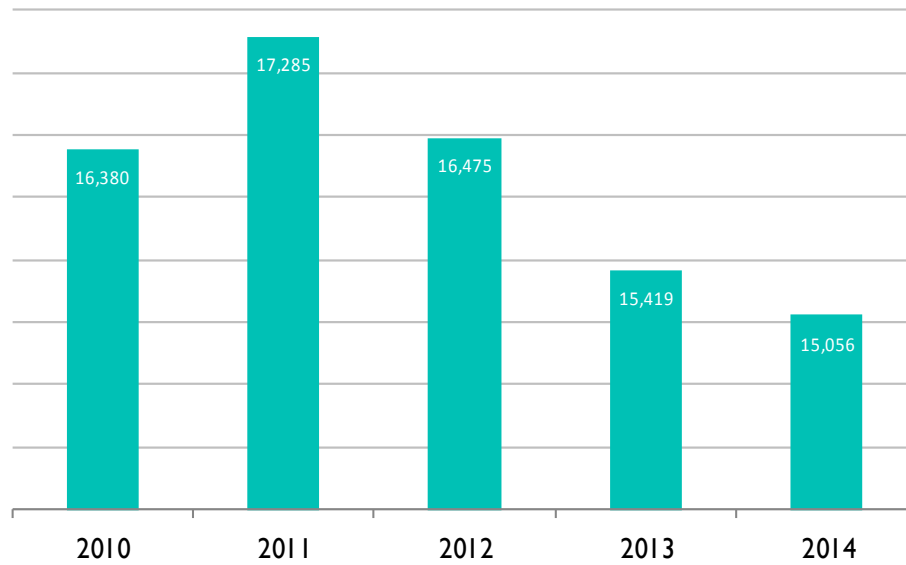
AY 2009-10 AY 2010-11 AY 2011-12 AY 2012-13 AY 2013-14

Attended Exclusively 1 Physical Campus	68.2%	66.4%	62.2%	61.0%	58.8%
Attended Exclusively Online	5.2%	6.3%	8.2%	9.4%	11.0%
Attended a Combination of 1 Physical Campus and Online	18.4%	19.2%	21.9%	22.1%	23.8%
Attended a Combination of 2 Physical Campuses	5.2%	5.2%	4.5%	4.6%	3.8%
Attended a Combination of 2 Physical Campuses and Online	2.7%	2.7%	3.0%	2.7%	2.4%
Attended 3 or More Physical Campuses	0.2%	0.1%	0.1%	0.1%	0.1%
Attended 3 or More Physical Campuses and Online	0.1%	0.1%	0.1%	0.1%	0.0%



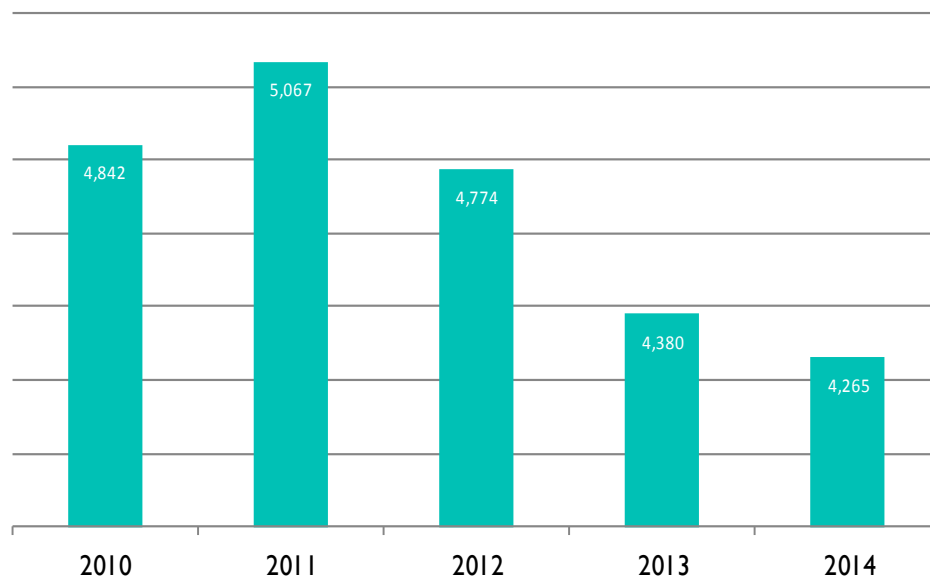
Spring Headcount Enrollment

	Spring 2010	Spring 2011	Spring 2012	Spring 2013	Spring 2014	5 Year % Change
Headcount	16,380	17,285	16,475	15,419	15,056	-8.1%



Spring FTE Enrollment

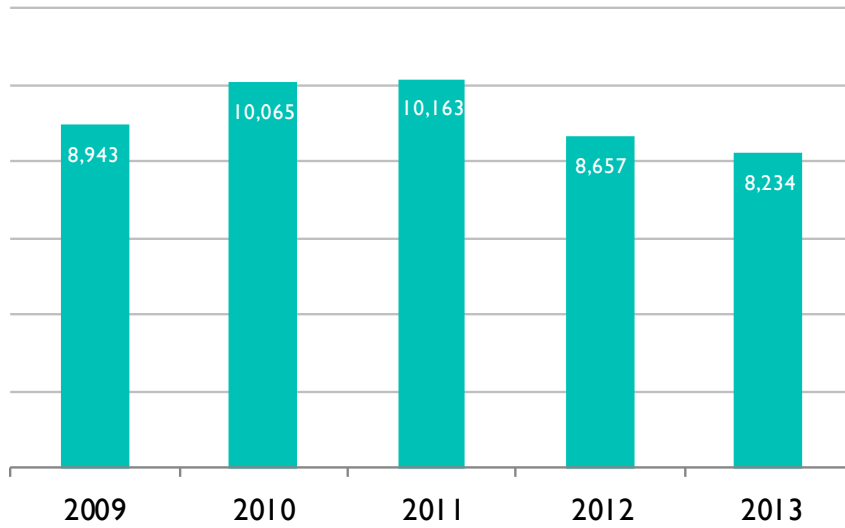
	Spring 2010	Spring 2011	Spring 2012	Spring 2013	Spring 2014	5 Year % Change
Total FTE	4,842	5,067	4,774	4,380	4,265	-11.9%



Source: Local Banner

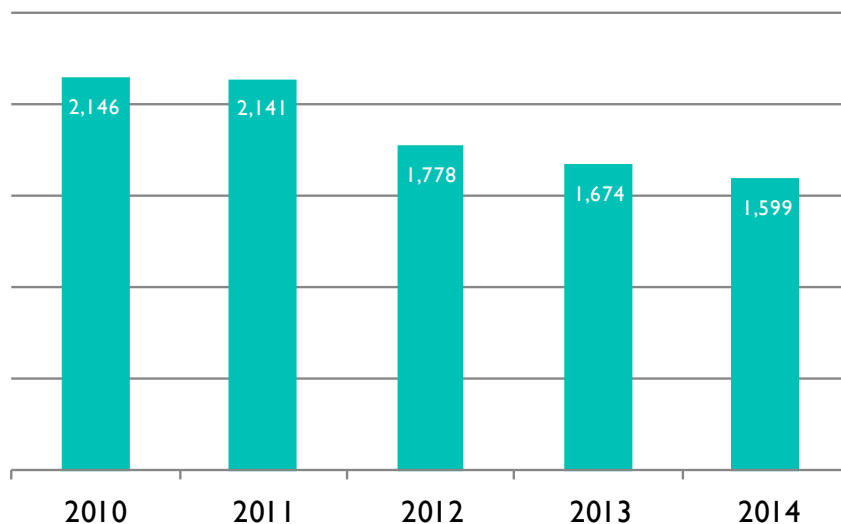
Summer Headcount Enrollment

	Summer 2010	Summer 2011	Summer 2012	Summer 2013	Summer 2014	5 Year % Change
Headcount	10,065	10,163	8,657	8,234	7,780	-22.7%



Summer FTE Enrollment

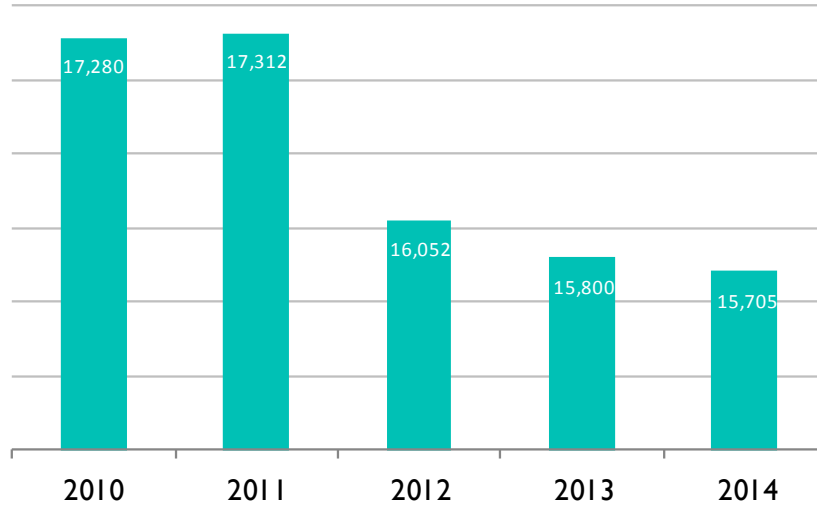
	Summer 2010	Summer 2011	Summer 2012	Summer 2013	Summer 2014	5 Year % Change
Total FTE	2,146	2,141	1,778	1,674	1,599	-25.5%



Source: Local Banner data

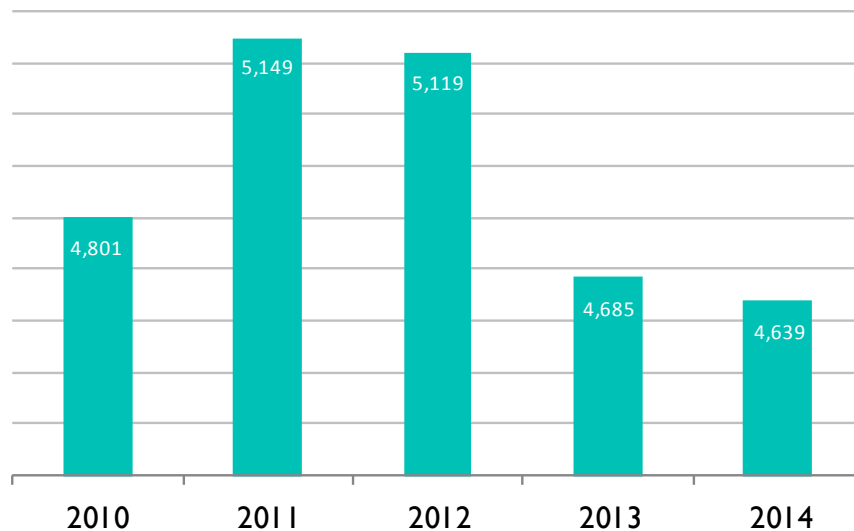
Fall Headcount Enrollment

	Fall 2010	Fall 2011	Fall 2012	Fall 2013	Fall 2014	5 Year % Change
Headcount	17,280	17,312	16,052	15,800	15,705	-9.1%



Fall FTE Enrollment

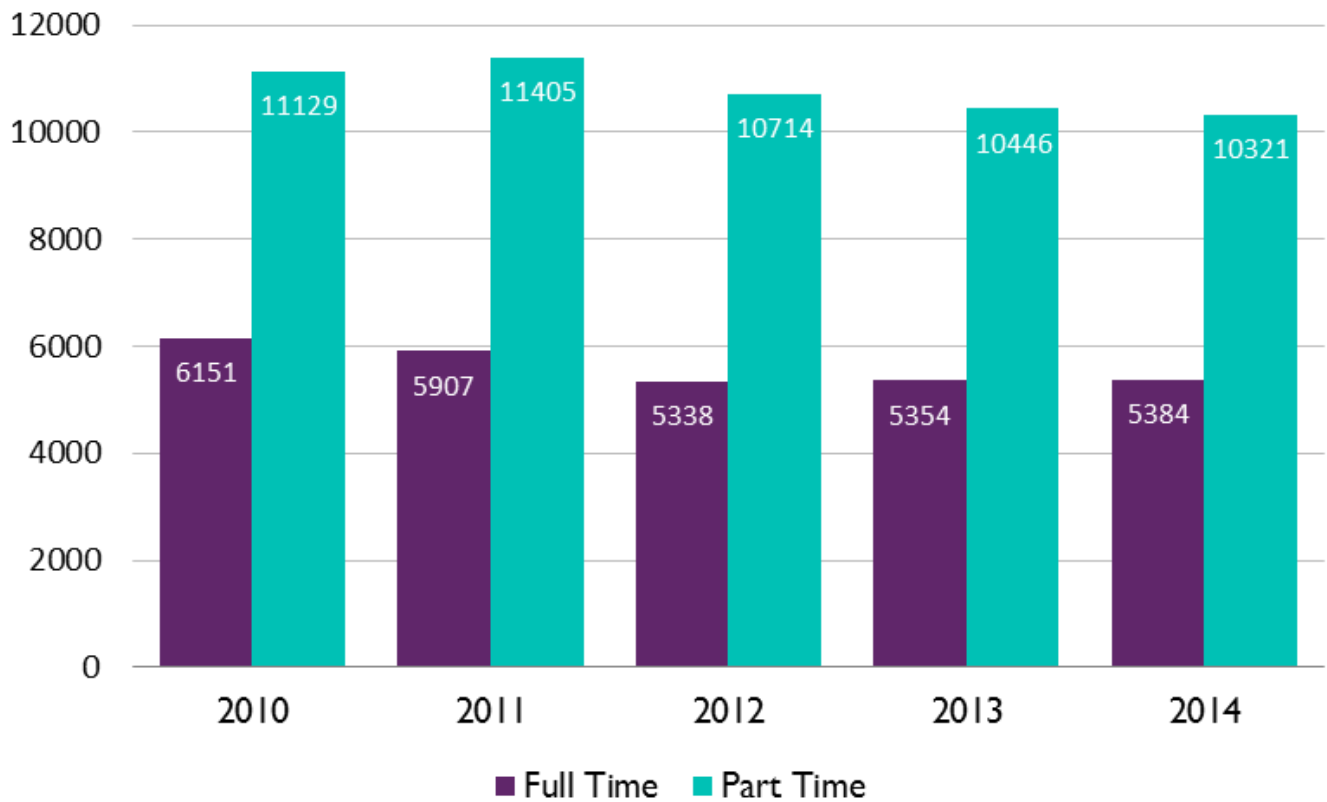
	Fall 2010	Fall 2011	Fall 2012	Fall 2013	Fall 2014	5 Year % Change
Total FTE	4,801	5,149	5,119	4,685	4,639	-3.4%



Source: Local Banner data

Fall Enrollment by Full-time & Part-time

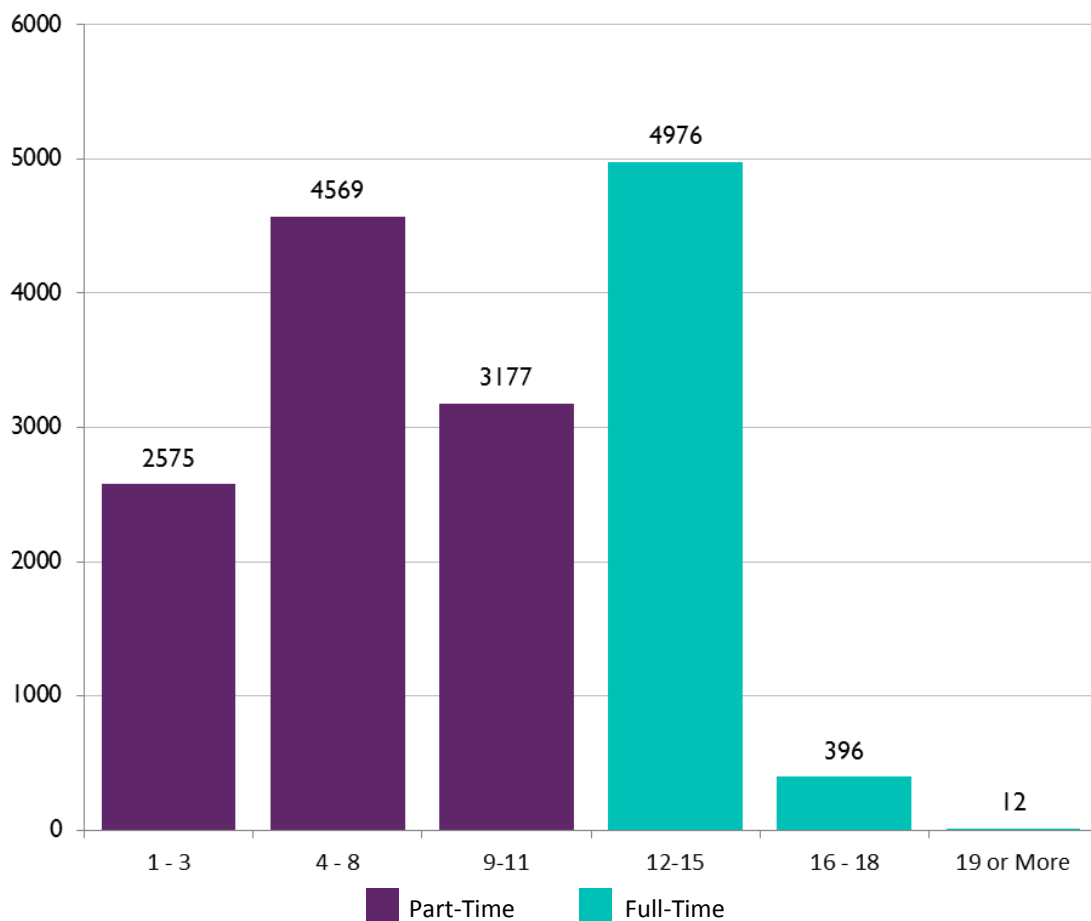
	Fall 2010	Fall 2011	Fall 2012	Fall 2013	Fall 2014	5 Year % Change
Full Time	6151	5907	5338	5354	5384	-12.5%
Part Time	11129	11405	10714	10446	10321	-7.3%
Total	17280	17312	16052	15800	15705	-9.1%



Source: Local Banner data

Fall 2014 Full-Time and Part-Time Enrollment by Credit Hours Enrolled

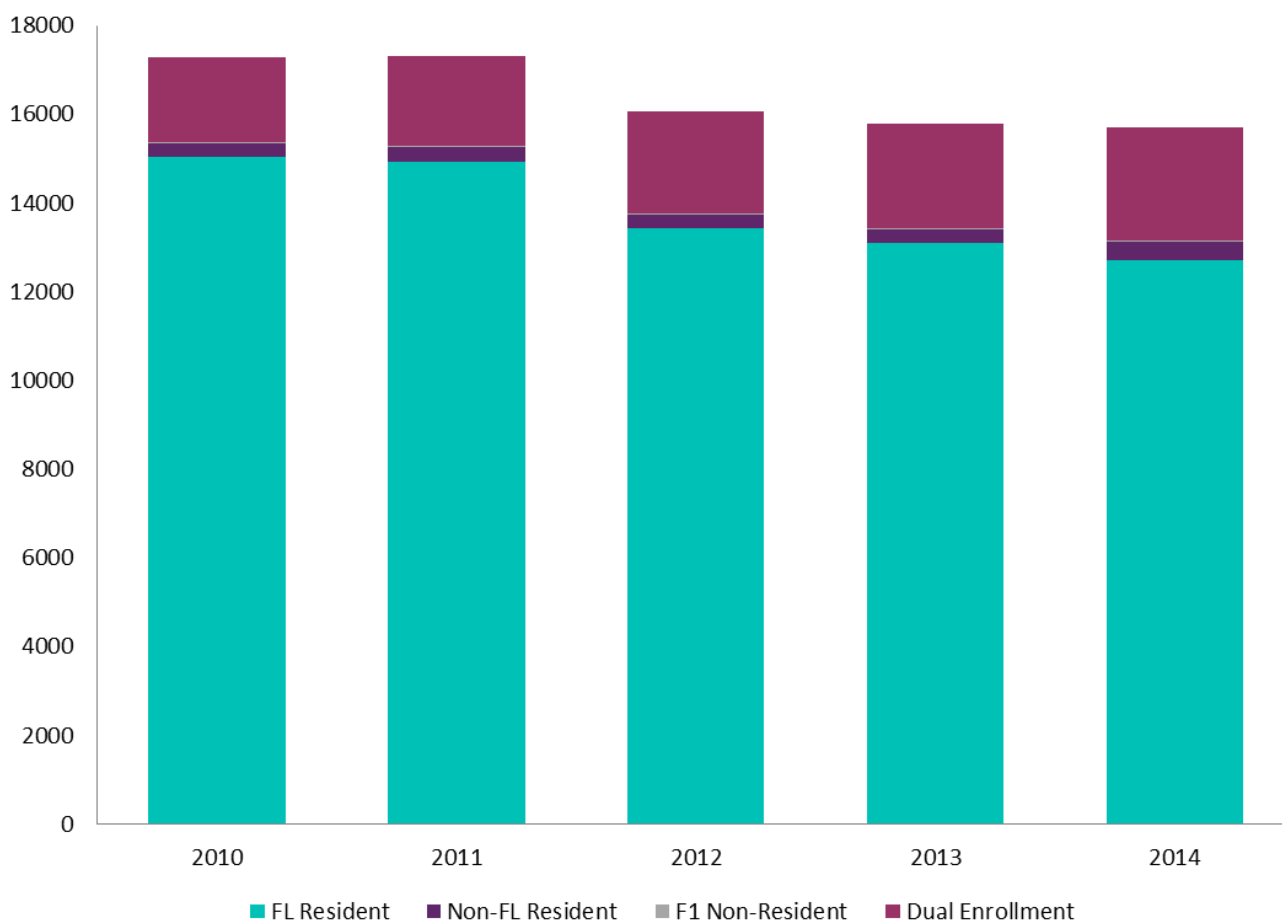
Part-Time			Full-Time		
Credit Hours	n	%	Credit Hours	n	%
1	33	0.2%	12	3382	21.5%
2	11	0.1%	13	1047	6.7%
3	2531	16.1%	14	177	1.1%
4	461	2.9%	15	370	2.4%
5	49	0.3%	16	281	1.8%
6	2954	18.8%	17	67	0.4%
7	724	4.6%	18	48	0.3%
8	381	2.4%	19	7	0.0%
9	2240	14.3%	20	3	0.0%
10	741	4.7%	21	1	0.0%
11	196	1.2%	23	1	0.0%
Total PT	10321	65.7%	Total FT	5384	34.3%



Source: Local Banner data

Fall Enrollment by Residency Status

	Fall 2010	Fall 2011	Fall 2012	Fall 2013	Fall 2014	5 Year % Change
FL Resident	15047	14932	13425	13094	12713	-15.5%
Non-FL Resident	295	318	299	299	412	39.7%
F1 Non-Resident	41	47	41	35	26	-36.6%
Dual Enrollment	1897	2015	2287	2372	2554	34.6%
Total	17280	17312	16052	15800	15705	-9.1%



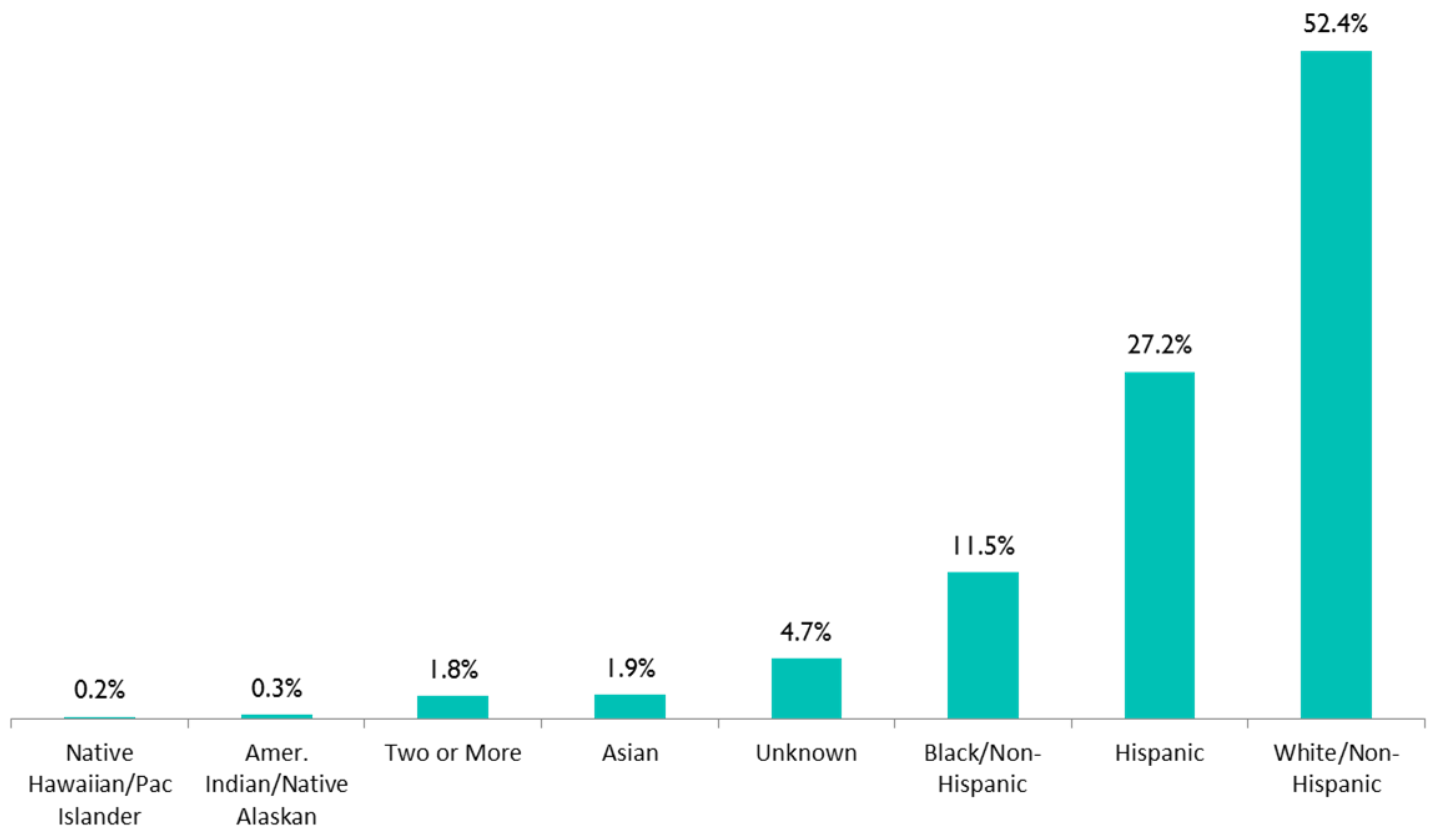
*F1 Non-Resident: An F1 visa is issued to international students who are attending an academic program or English Language Program at a US college or university.

Source: Local Banner data

Fall Enrollment by Ethnic Group

	Fall 2010	Fall 2011	Fall 2012	Fall 2013	Fall 2014	5 Year % Change
Amer. Indian/Native Alaskan	47	46	44	53	51	8.5%
Asian	286	322	325	314	293	2.4%
Black/Non-Hispanic	1747	1898	1756	1839	1803	3.2%
Native Hawaiian/Pac Islander	20	31	34	36	27	35.0%
Hispanic	3612	3854	3683	3970	4276	18.4%
Two or More	54	113	143	206	278	414.8%
White/Non-Hispanic	9462	10305	9309	8661	8236	-13.0%
Unknown	2052	743	758	721	741	-63.9%

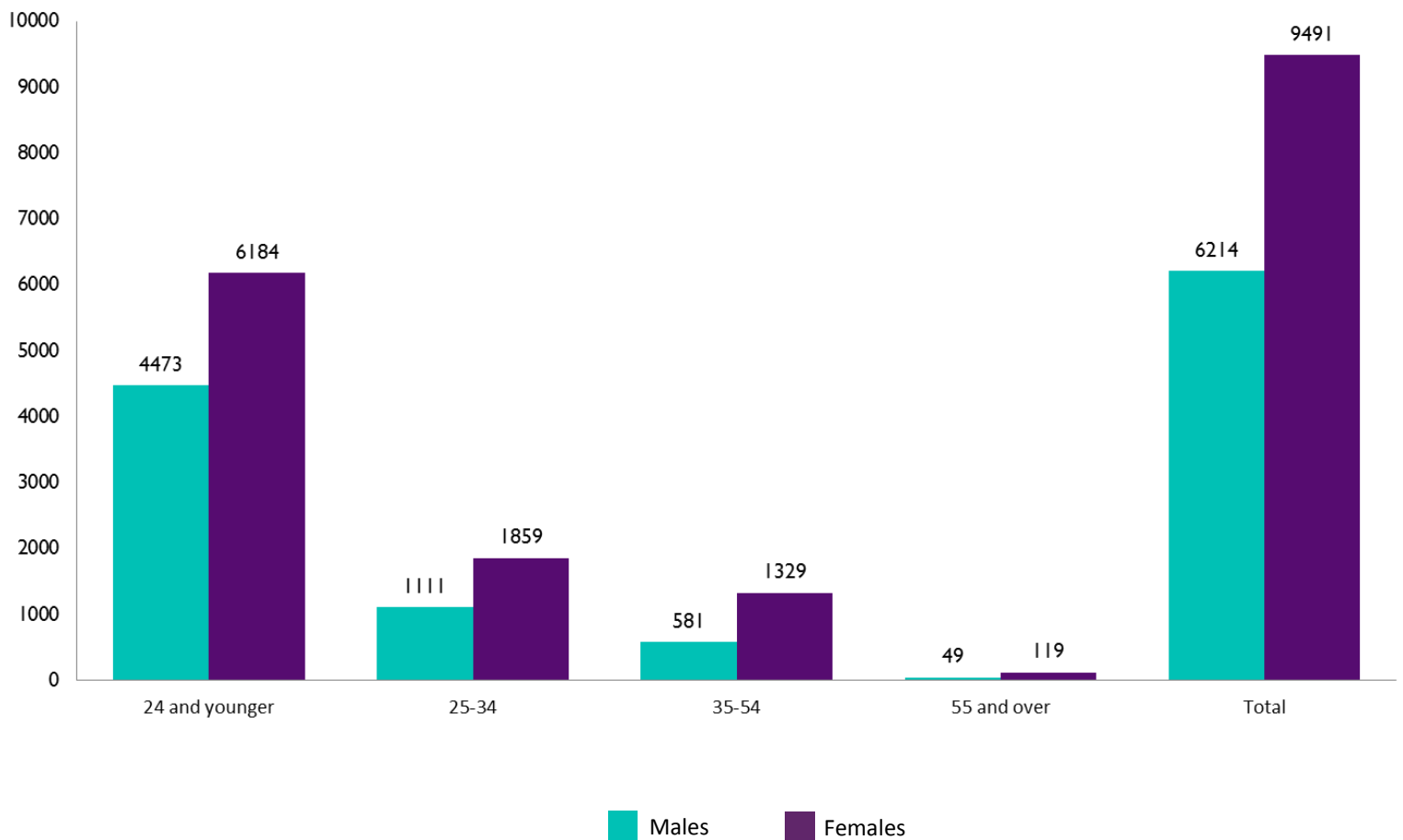
Fall 2014



Source: Local Banner data

Fall 2014

Age	Males		Females		Total	
	#	% of Total	#	% of Total	#	% of Total
24 and younger	4473	28.5%	6184	39.4%	10657	67.9%
25-34	1111	7.1%	1859	11.8%	2970	18.9%
35-54	581	3.7%	1329	8.5%	1910	12.2%
55 and over	49	0.3%	119	0.8%	168	1.1%
Total	6214	39.6%	9491	60.4%	15705	100.0%

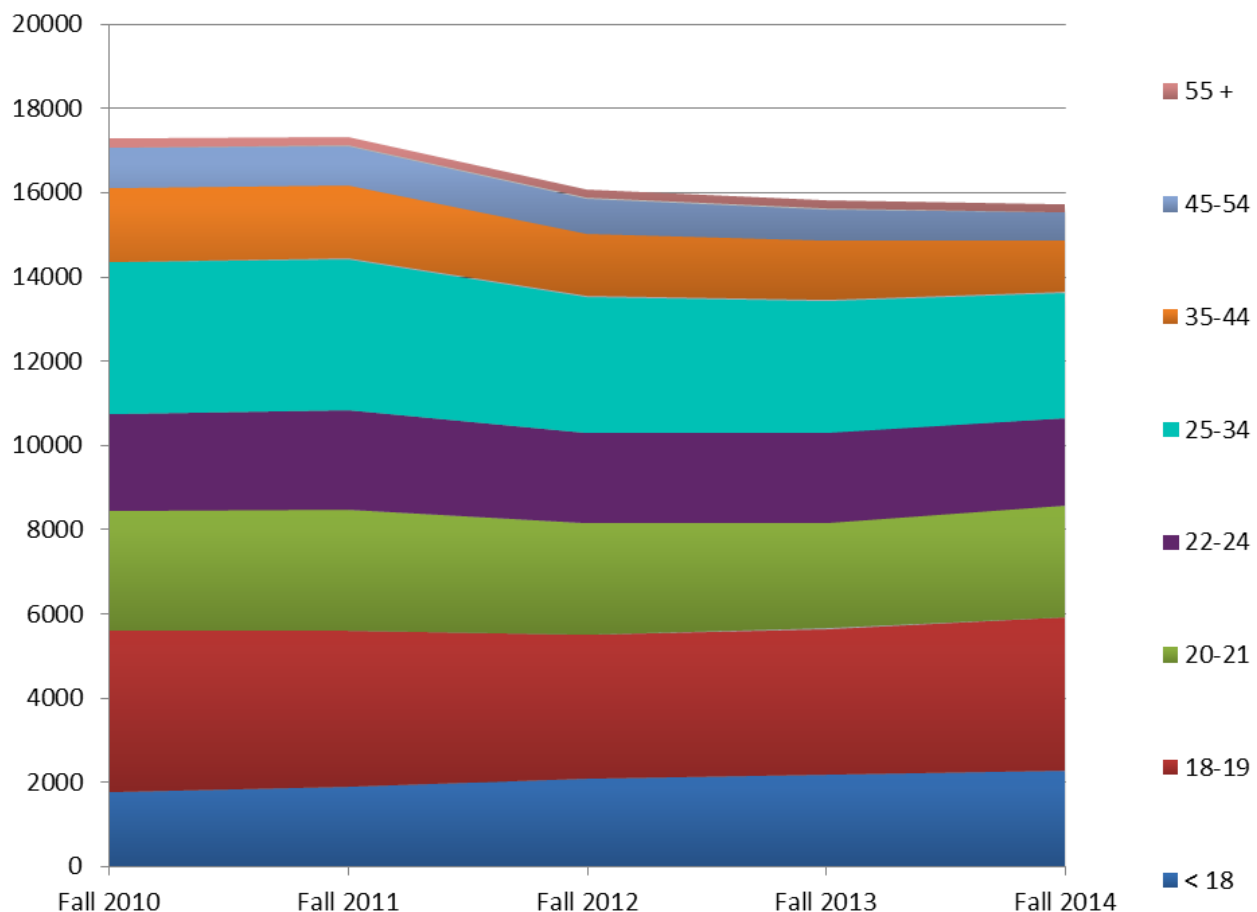


Source: Local Banner data

Fall Enrollment by Age

	Fall 2010	Fall 2011	Fall 2012	Fall 2013	Fall 2014	I-Year Percent Change	5-Year Percent Change
Mean Age	25.59	25.49	25.14	24.86	24.37	-1.97%	-4.77%

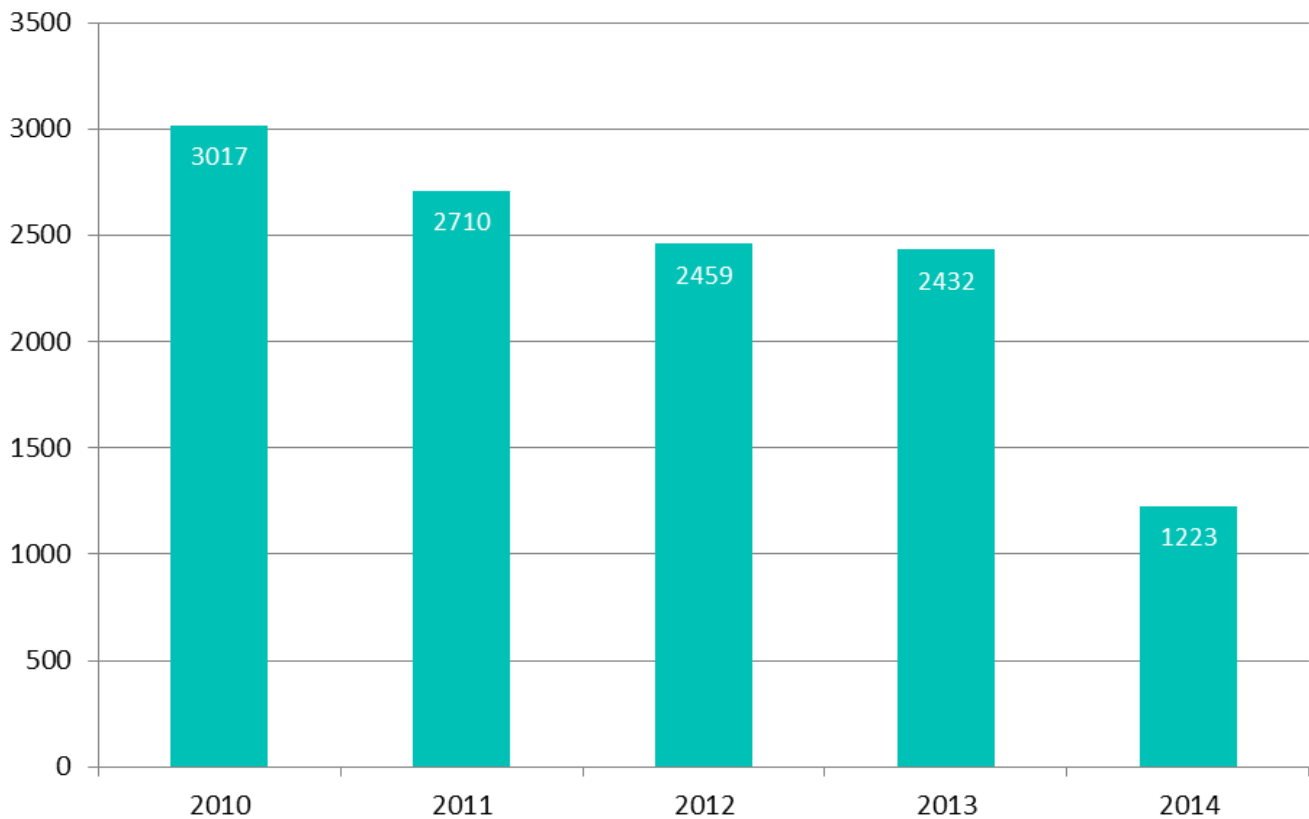
Age Range	Fall 2010	Fall 2011	Fall 2012	Fall 2013	Fall 2014	I-Year Percent Change	5-Year Percent Change
< 18	1776	1890	2097	2179	2275	4.41%	28.10%
18-19	3827	3711	3412	3457	3647	5.50%	-4.70%
20-21	2846	2874	2631	2591	2636	1.74%	-7.38%
22-24	2303	2365	2162	2099	2099	0.00%	-8.86%
25-34	3597	3584	3239	3116	2970	-4.69%	-17.43%
35-44	1769	1769	1508	1438	1246	-13.35%	-29.56%
45-54	944	916	817	727	664	-8.67%	-29.66%
55 +	218	203	186	193	168	-12.95%	-22.94%



Source: Local Banner data

	Fall 2010	Fall 2011	Fall 2012	Fall 2013	Fall 2014	5 Year # Change	5 Year % Change
Students taking 1 or more Developmental Studies Course	3017	2710	2459	2432	1223	-1794	-59.5%
% of Total Enrollment in Developmental Studies	17.5%	15.7%	15.3%	15.4%	7.8%		
# Change		-307	-251	-27	-1209		
% Change		-10.2%	-9.3%	-1.1%	-49.7%		

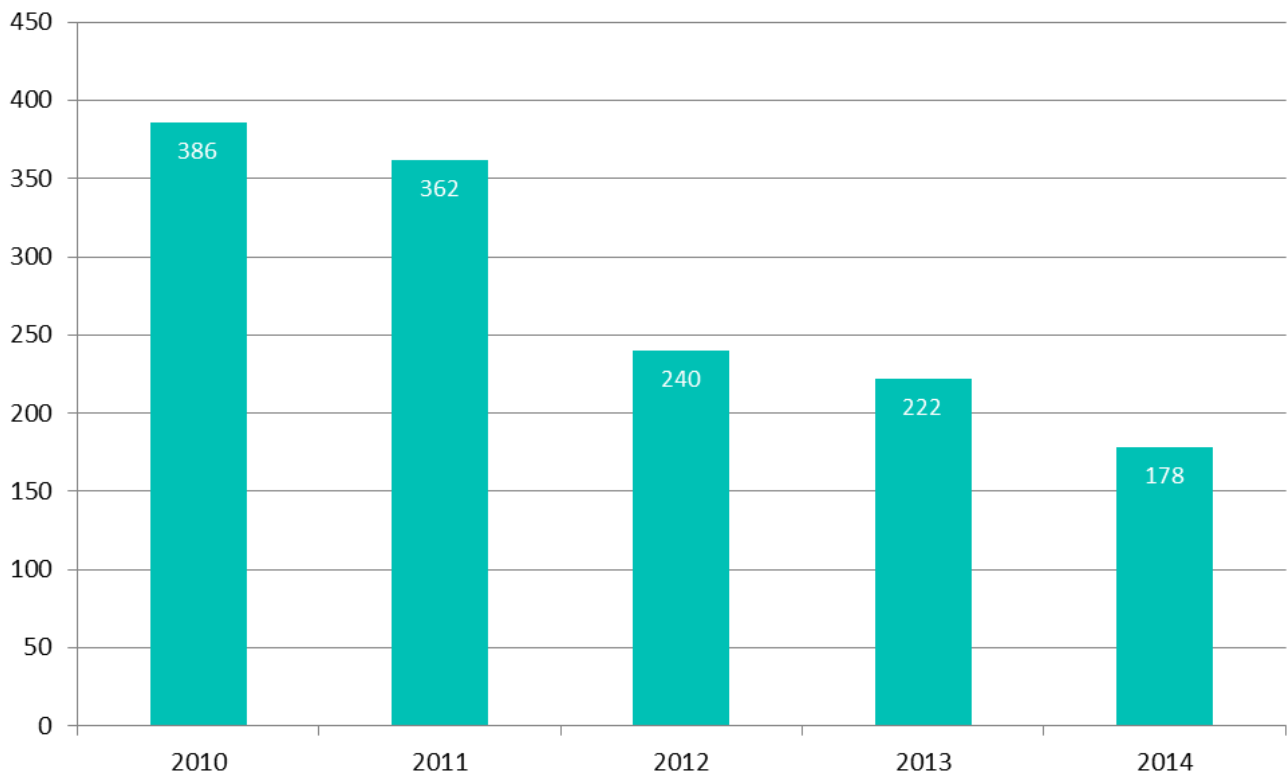
Students taking 1 or more Developmental Studies Course



Source: Local Banner data

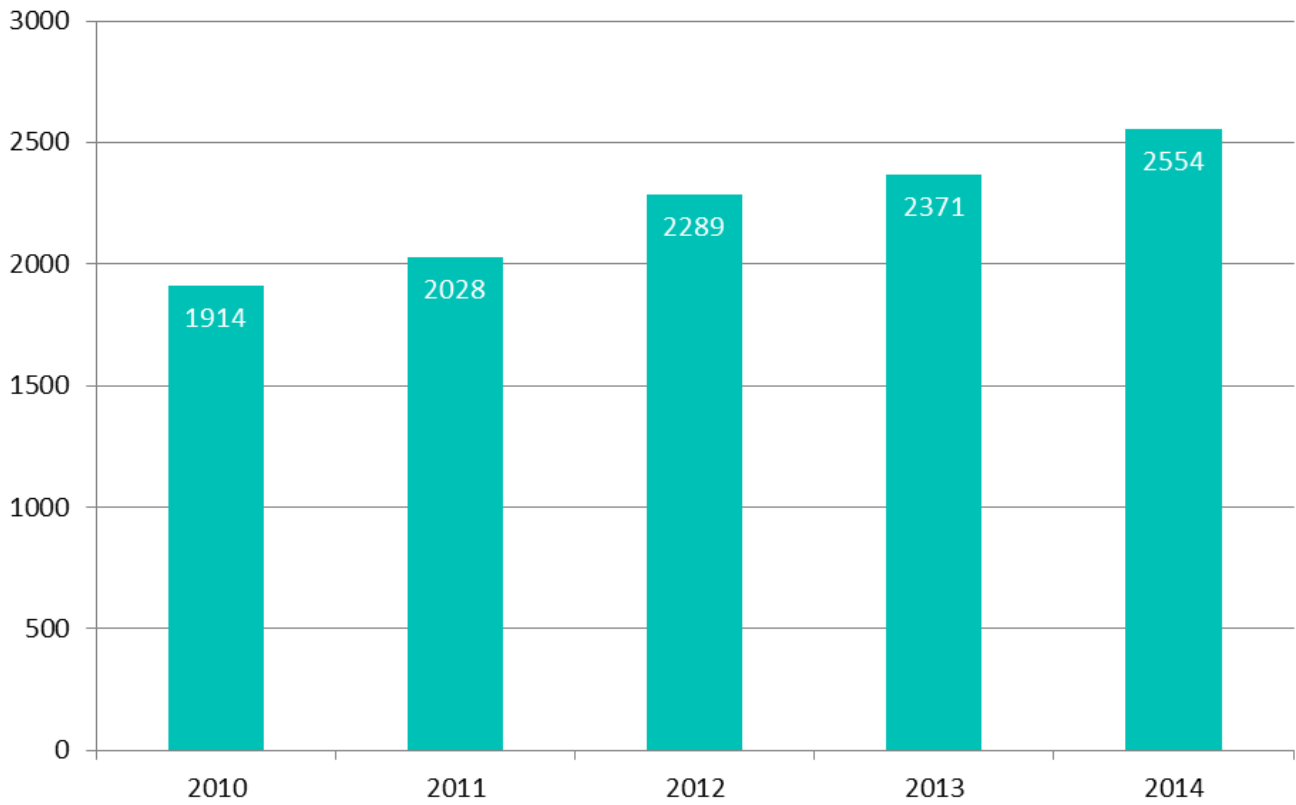
	Fall 2010	Fall 2011	Fall 2012	Fall 2013	Fall 2014	5 Year # Change	5 Year % Change
Students taking 1 or more EAP Course	386	362	240	222	178	-208	-53.9%
% of Total Enrollment in EAP	2.2%	2.1%	1.5%	1.4%	1.1%		
# Change		-24	-122	-18	-44		
% Change		-6.2%	-33.7%	-7.5%	-19.8%		

Students taking 1 or more EAP Course



Source: Local Banner data

	Fall 2010	Fall 2011	Fall 2012	Fall 2013	Fall 2014	5 Year # Change	5 Year % Change
Dual Enrollment Students	1914	2028	2289	2371	2554	640	33.4%
% of Total Enrollment	11.1%	11.7%	14.3%	15.0%	16.3%		
# Change		114	261	82	183		
% Change		6.0%	12.9%	3.6%	7.7%		



Source: Local Banner data

School of Health Professions

	Fall 2010	Fall 2011	Fall 2012	Fall 2013	Fall 2014
BAS Cardiopulmonary Science	4	22	26	37	36
BS Nursing	257	240	210	223	284
AS Cardiovascular Technology	43	50	35	35	38
AS Dental Hygiene	42	40	36	34	35
AS Emergency Medical Services	252	221	238	219	202
AS Fire Science Technology	71	77	62	63	50
AS Health Information Technology	32	29	30	28	21
AS Human Services	7	35	52	59	58
AS Nursing Basic Program	502	418	381	373	376
AS Nursing Advanced Placement	131	135	140	126	101
AS Radiologic Technology	60	63	48	49	59
AS Respiratory Care	83	89	64	60	57
AS Pre-Cardiovascular Technology	56	61	67	42	38
AS Pre-Dental Hygiene	225	209	212	191	240
AS Pre-Health Information Technology	55	92	69	75	49
AS Pre-Human Services, Addiction	9	41	25	15	8
AS Pre-Nursing	2076	2004	1582	1523	1521
AS Pre-Nursing AP	82	120	119	119	116
AS Pre-Radiologic Technology	480	470	370	345	303
AS Pre-Respiratory Care Technology	72	65	59	64	61
Certificate in Emergency Medical Technician	52	20	15	20	20
Certificate in Firefighter Minimum Standards	6	6	4	8	8
Certificate in Paramedic	6	6	14	7	15
Certificate in Dental Assisting	1	2	1	1	1
ASN Opticianry	10	4	5	2	1
ASN Physical Therapist Assistant	27	33	25	25	9
Certificate in Eye Care Technician	1	---	---	---	---
Total School of Health Professions	4642	4552	3889	3743	3707

School of Education

	Fall 2010	Fall 2011	Fall 2012	Fall 2013	Fall 2014
BS Elementary Education	253	235	200	195	179
BS Middle Grades Language Arts Education	---	18	23	21	20
BS Middle Grades Mathematics Education	---	8	17	14	8
BS Middle Grades Science Education	---	1	5	8	7
BS Secondary Biology Education	10	7	---	2	3
BS Secondary Mathematics Education	26	22	9	7	4
AS Early Childhood Education	181	79	38	16	21
Total School of Education	470	370	292	263	242

Fall Enrollment by Primary Major

School of Business and Technology

	Fall 2010	Fall 2011	Fall 2012	Fall 2013	Fall 2014
BAS Public Safety Administration	122	115	133	110	111
BAS Supervision and Management	250	369	405	390	420
AS Accounting Technology	154	147	117	102	101
AS Architectural Design and Construction Technology	---	---	7	37	36
AS Business Administration and Management	535	472	405	387	361
AS Civil Engineering Technology	---	---	9	29	34
AS Drafting and Design Technology	139	101	68	31	8
AS Computer Programming Analysis	173	178	140	181	176
AS Crime Scene Technology	122	120	87	65	59
AS Criminal Justice Technology	285	257	225	238	209
AS Internet Services Technology	55	52	35	16	7
AS Networking Services Technology	131	144	136	161	113
AS Paralegal Studies	214	213	170	150	125
AS Golf Course Operations	6	2	---	---	---
Certificate in Accounting Technology Management	15	8	8	7	---
Certificate in Computer Programmer	---	---	1	3	2
Certificate in Computer Programmer Specialist	---	---	1	1	---
Certificate in Crime Scene Technician	5	2	2	0	1
Certificate in Business Data Processing	10	9	2	---	1
Certificate in Information Technology Management	---	---	---	3	4
Certificate in Information Technology Support Specialist	---	---	---	3	3
Certificate in Network Specialist	15	12	5	1	1
Certificate in Network Security	---	---	---	---	2
Certificate in Small Business Management	26	13	20	14	16
Total School of Business and Technology	2257	2214	1976	1929	1790

School of Arts, Humanities, and Social Sciences

School of Pure and Applied Sciences

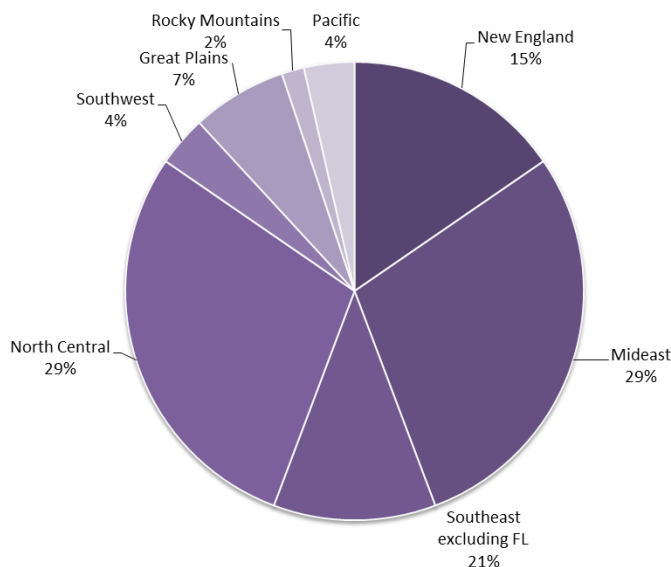
	Fall 2010	Fall 2011	Fall 2012	Fall 2013	Fall 2014
AA General Studies	9311	9635	9429	9406	9488
Total School of Arts, Humanities, and Social Sciences and School of Pure and Applied Sciences	9311	9635	9429	9406	9488

Non-degree Seeking	600	541	466	459	478
---------------------------	------------	------------	------------	------------	------------

Source: Local Banner data

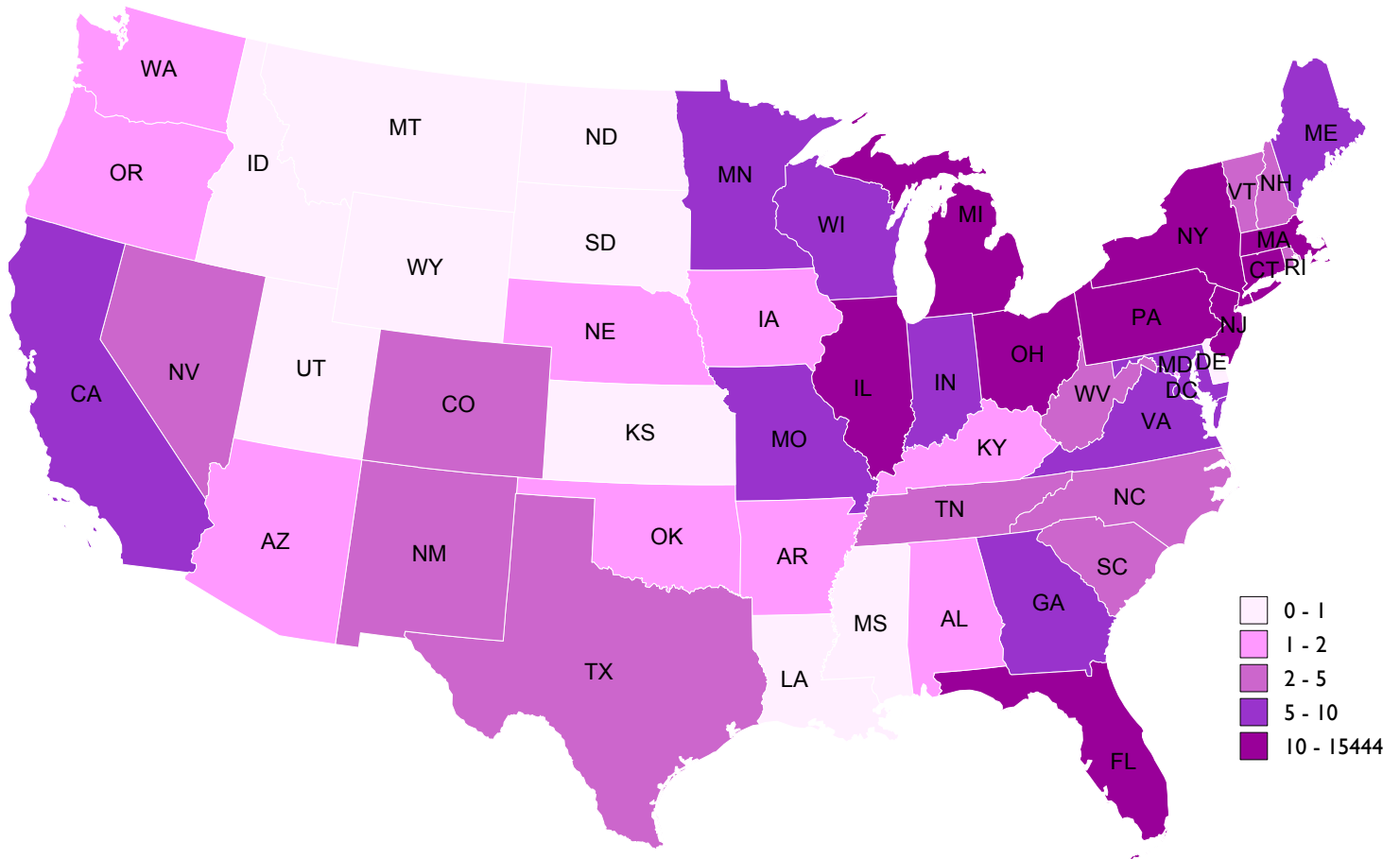
Fall 2014 Florida State of Origin

New England		Midwest		Southeast	
Connecticut	14	District of Columbia	1	Alabama	1
Maine	6	Delaware	0	Florida	15444
Massachusetts	10	Maryland	8	Georgia	8
Rhode Island	3	New Jersey	16	Mississippi	0
Vermont	4	New York	35	North Carolina	4
New Hampshire	2	Pennsylvania	10	South Carolina	4
Total	39	West Virginia	3	Tennessee	3
		Total	73	Virginia	9
				Total	15473
North Central		Southwest		Great Plains	
Illinois	21	Arizona	1	Iowa	1
Indiana	8	Arkansas	1	Kansas	0
Kentucky	1	Louisiana	0	Minnesota	9
Michigan	22	New Mexico	2	Missouri	6
Ohio	16	Oklahoma	1	Nebraska	1
Wisconsin	5	Texas	4	North Dakota	0
Total	73	Total	9	South Dakota	0
				Total	17
Rocky Mountains		Pacific			
Colorado	2	Alaska	0		
Idaho	0	California	7		
Montana	0	Hawaii	0		
Nevada	2	Oregon	1		
Utah	0	Washington	1		
Wyoming	0	Total	9		
Total	4				



Source: Local Banner data

Fall Enrollment by State of Origin

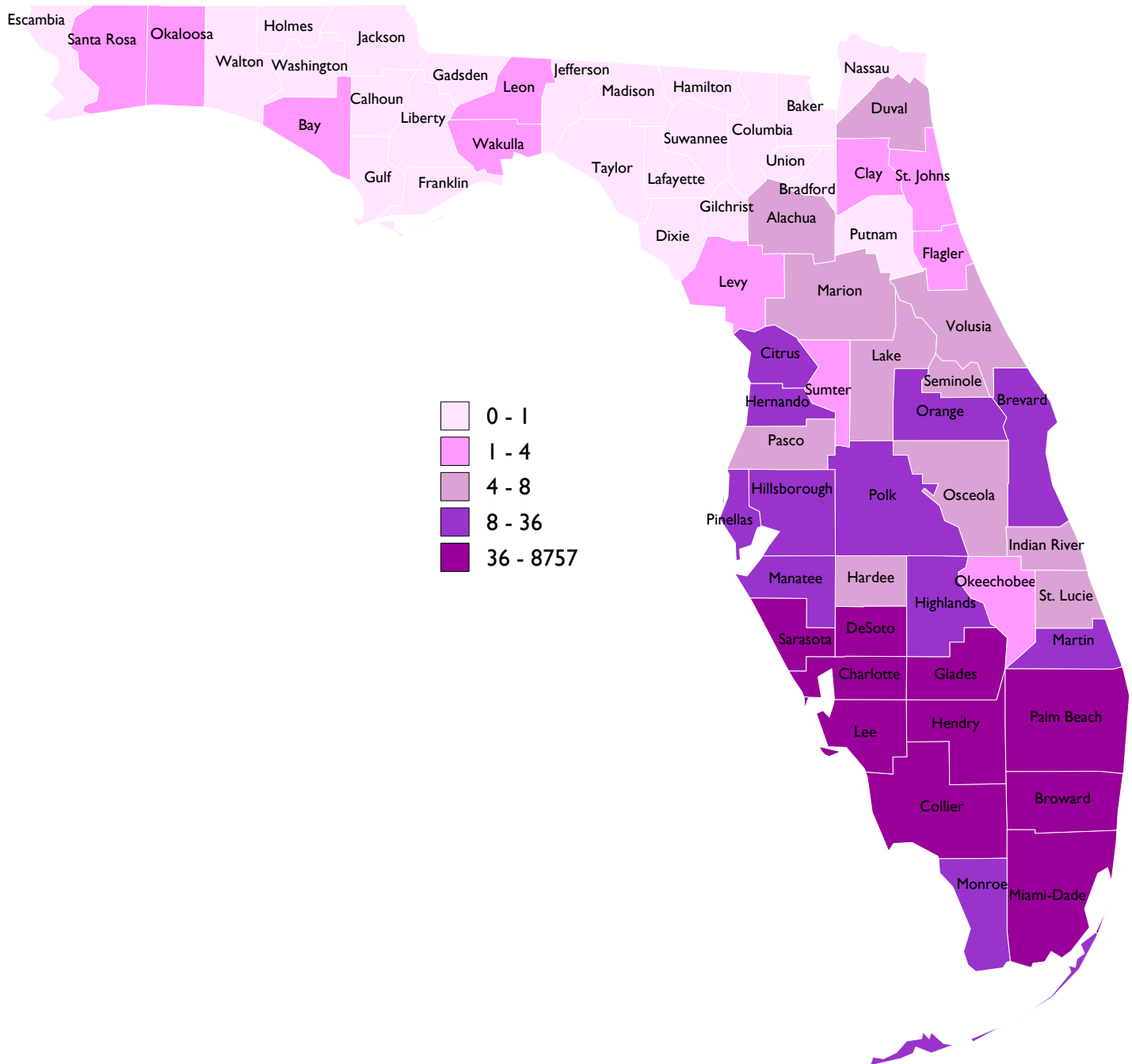


Source: Local Banner data

Fall 2014 Florida County of Origin

	<u>n</u>		<u>n</u>
Alachua	6	Miami-Dade	69
Bay	1	Monroe	9
Bradford	0	Okaloosa	1
Brevard	10	Okeechobee	3
Broward	86	Orange	11
Charlotte	1,593	Osceola	7
Citrus	9	Palm Beach	46
Clay	2	Pasco	7
Collier	3,939	Pinellas	16
Desoto	69	Polk	10
Duval	5	Santa Rosa	1
Flagler	2	Sarasota	226
Glades	36	Seminole	7
Hardee	5	St Johns	1
Hendry	403	St Lucie	4
Hernando	8	Sumter	1
Highlands	17	Volusia	5
Hillsborough	27	Wakulla	2
Indian River	4	Total	15,444
Lake	5		
Lee	8,757		
Leon	3		
Levy	1		
Manatee	16		
Marion	6		
Martin	8		

Fall Enrollment by County of Origin



Source: Local Banner data

3-Year Total SCH	Spring 2012	Spring 2013	Spring 2014	1-Year % Change
School of Arts Hum & Soc Sci	56321	51621	50834	-9.7%
School of Business and Tech	16781	14478	14263	-15.0%
School of Education	5896	4888	4535	-23.1%
School of Health Professions	9915	10323	9752	-1.6%
School of Pure & Applied Sci	37700	36175	36113	-4.2%
College and Career Readiness	16541	13874	12369	-25.2%
Library (Undergrad Research)	64	39	70	9.4%

Spring 2014 SCH By Campus	Lee	Collier	Charlotte	Hendry/ Glades	FSW Online
School of Arts Hum & Soc Sci	25400	9103	5066	1110	10155
School of Business and Tech	5812	1647	951	303	5550
School of Education	3067	279	337	51	801
School of Health Professions	5154	1725	970	0	1903
School of Pure & Applied Sci	20130	6030	4092	826	5035
College and Career Readiness	7786	2796	1182	455	150
Library (Undergrad Research)	26	0	0	0	44

Spring 2014 SCH by Part of Term	Full Term	Mini-A	Mini-B	Special C	Dual Enrollment
School of Arts Hum & Soc Sci	46534	543	665	6	3086
School of Business and Tech	11356	1035	1758	114	0
School of Education	4361	42	15	3	114
School of Health Professions	6535	663	745	1809	0
School of Pure & Applied Sci	34947	0	316	25	825
College and Career Readiness	10739	880	471	150	129
Library (Undergrad Research)	54	0	16	0	0

Source: Local Banner data

Summer Breakdown of Credit Hours

3-Year Total SCH	Summer 2012	Summer 2013	Summer 2014	1-Year % Change
School of Arts, Humanities & Social Sciences	18986	17731	16802	-5.2%
School of Business and Technology	7078	6094	6014	-1.3%
School of Education	1512	1431	1191	-16.8%
School of Health Professions	3854	4199	4192	-0.2%
School of Pure & Applied Sciences	16414	16033	16524	3.1%
College and Career Readiness	5480	4686	3207	-31.6%
Library (Undergraduate Research)	18	33	33	0.0%

Summer 2014 SCH By Campus	Lee	Collier	Charlotte	Hendry/ Glades	FSW Online
School of Arts, Humanities & Social Sciences	6231	2379	848	96	7248
School of Business and Technology	1994	255	81	30	3654
School of Education	417	9	15	0	750
School of Health Professions	2014	504	195	0	1479
School of Pure & Applied Sciences	8826	2625	870	203	4000
College and Career Readiness	2275	578	155	85	114
Library (Undergraduate Research)	5	0	0	3	25

Summer 2014 SCH by Part of Term	Full Term	Mini-A	Mini-B	Special C	Dual Enrollment
School of Arts, Humanities & Social Sciences	4465	6234	6103	0	n/a
School of Business and Technology	3145	1363	1341	165	n/a
School of Education	120	840	231	0	n/a
School of Health Professions	1687	1035	662	808	n/a
School of Pure & Applied Sciences	4783	6200	5541	0	n/a
College and Career Readiness	354	1372	1367	114	n/a
Library (Undergraduate Research)	6	16	11	0	n/a

Source: Local Banner data

3-Year Total SCH	Fall 2012	Fall 2013	Fall 2014	1-Year % Change
School of Arts, Humanities & Social Sciences	55746	51903	53620	3.3%
School of Business and Technology	15087	14553	14526	-0.2%
School of Education	5151	4781	4600	-3.8%
School of Health Professions	10553	10294	10664	3.6%
School of Pure & Applied Sciences	36208	37459	40429	7.9%
College and Career Readiness	17761	20087	10341	-48.5%
Library (Undergraduate Research)	51	81	82	1.2%

Fall 2014 SCH By Campus	Lee	Collier	Charlotte	Hendry/ Glades	FSW Online
School of Arts, Humanities & Social Sciences	27057	9684	5022	1176	10681
School of Business and Technology	5733	1161	447	123	7062
School of Education	3211	405	229	0	755
School of Health Professions	5316	2097	1102	0	2149
School of Pure & Applied Sciences	23179	7402	4120	980	4748
College and Career Readiness	6717	2421	663	390	150
Library (Undergraduate Research)	49	0	0	0	33

Fall 2014 SCH by Part of Term	Full Term	Mini-A	Mini-B	Special C	Dual Enrollment
School of Arts, Humanities & Social Sciences	48389	798	1298	0	3135
School of Business and Technology	11371	1536	1532	33	54
School of Education	4130	0	191	0	279
School of Health Professions	6646	1311	1260	1447	0
School of Pure & Applied Sciences	39575	0	0	30	824
College and Career Readiness	9237	228	528	150	198
Library (Undergraduate Research)	69	0	13	0	0

Source: Local Banner data

3-Year Total SCH	AY 2011-12	AY 2012-13	AY 2013-14	1-Year % Change
School of Arts, Humanities & Social Sciences	138791	126353	120468	-4.7%
School of Business and Technology	42625	36643	34910	-4.7%
School of Education	13862	11551	10747	-7.0%
School of Health Professions	25691	24730	24245	-2.0%
School of Pure & Applied Sciences	95677	88797	89605	0.9%
College and Career Readiness	44240	37115	37142	0.1%
Library (Undergraduate Research)	140	108	184	70.4%

AY 2013-14 SCH By Campus	Lee	Collier	Charlotte	Hendry/ Glades	FSW Online
School of Arts, Humanities & Social Sciences	58387	20681	11931	3105	26364
School of Business and Technology	14267	3552	2064	783	14244
School of Education	6960	639	579	84	2485
School of Health Professions	12923	4270	2229	0	4823
School of Pure & Applied Sciences	50495	14800	9041	1716	13553
College and Career Readiness	24256	7700	3439	1337	410
Library (Undergraduate Research)	66	0	0	0	118

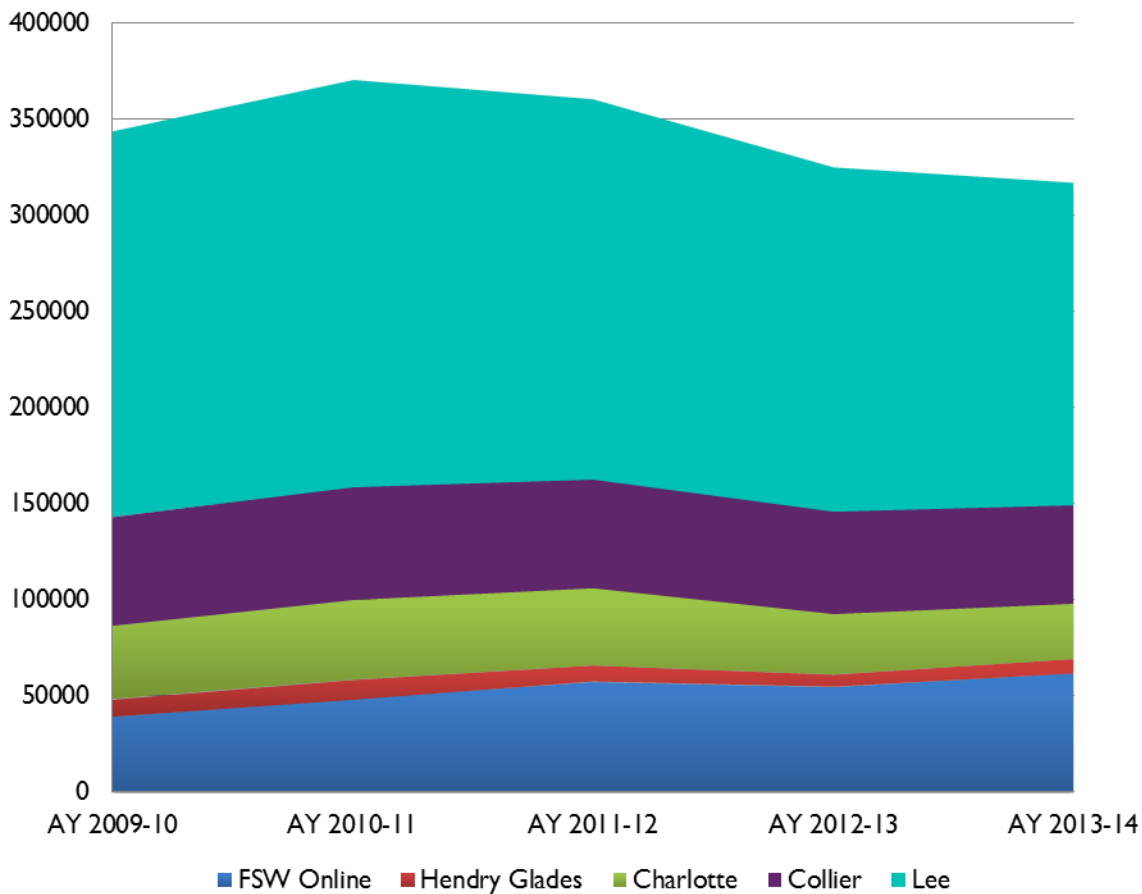
AY 2013-14 SCH by Part of Term	Full Term	Mini-A	Mini-B	Special C	Dual Enrollment
School of Arts, Humanities & Social Sciences	98327	7977	7941	6	6217
School of Business and Technology	25785	3972	4920	233	0
School of Education	8873	880	691	3	300
School of Health Professions	14805	2897	2140	4403	0
School of Pure & Applied Sciences	75631	6216	5638	193	1927
College and Career Readiness	30720	3165	2718	410	129
Library (Undergraduate Research)	126	12	43	3	0

Source: Local Banner data

Credit Hours Produced by Campus

	AY 2009-10	AY 2010-11	AY 2011-12	AY 2012-13	AY 2013-14	1-Year Percent Change	5-Year Percent Change
Lee	200566	211438	197842	178780	167354	-6.39%	-16.56%
Collier	56691	59284	56587	53128	51642	-2.80%	-8.91%
Charlotte	38124	41485	40582	32228	29283	-9.14%	-23.19%
Hendry Glades	9278	10030	8598	6366	7025	10.35%	-24.28%
FSW Online	39320	48617	57417	54795	61997	13.14%	57.67%

	AY 2009-10	AY 2010-11	AY 2011-12	AY 2012-13	AY 2013-14
Lee	58.3%	57.0%	54.8%	55.0%	52.7%
Collier	16.5%	16.0%	15.7%	16.3%	16.3%
Charlotte	11.1%	11.2%	11.2%	9.9%	9.2%
Hendry Glades	2.7%	2.7%	2.4%	2.0%	2.2%
FSW Online	11.4%	13.1%	15.9%	16.8%	19.5%



Source: Local

Bachelor of Applied Science

- Cardiopulmonary Sciences
- Public Safety Administration
- Supervision and Management

Bachelor of Science

- Elementary Education, ESOL & Reading Endorsement
- Middle Grades Language Arts Education
- Middle Grades Mathematics Education
- Middle Grades Science Education
- Nursing
- Secondary Biology Education
- Secondary Mathematics Education

Associate in Arts

- General Studies

Associate in Science

- Accounting Technology
- Business Administration and Management
- Cardiovascular Technology
- Computer Programming and Analysis
- Crime Scene Technology
- Criminal Justice Technology
- Dental Hygiene
- Drafting and Design Technology
- Emergency Medical Services Technology
- Fire Science Technology
- Health Information Management
- Human Services
- Internet Services Technology
- Networking Administrator
- Nursing: RN Advanced Placement and Basic Program RN
- Paralegal Studies
- Radiologic Technology
- Respiratory Care

Certificates

- Accounting Applications Certificate
- Computer Programming Certificate
- Crime Scene Technology Certificate
- Emergency Medical Technician - Basic Certificate
- Firefighter Minimum Standards Certificate
- Network Specialist Certificate
- Paramedic Certificate
- Small Business Management Certificate

School of Arts, Humanities, and Social Sciences & School of Pure and Applied Sciences

	AY 2009-10	AY 2010-11	AY 2011-12	AY 2012-13	AY 2013-14
Associate's Degrees	1215	1528	1777	1755	1714

School of Business and Technology

	AY 2009-10	AY 2010-11	AY 2011-12	AY 2012-13	AY 2013-14
Certificates	39	36	34	33	22
Associate's Degrees	207	252	246	208	218
Bachelor's Degrees	44	78	109	161	134

School of Education

	AY 2009-10	AY 2010-11	AY 2011-12	AY 2012-13	AY 2013-14
Associate's Degrees	8	18	9	7	1
Bachelor's Degrees	15	100	117	103	106

School of Health Professions

	AY 2009-10	AY 2010-11	AY 2011-12	AY 2012-13	AY 2013-14
Certificates	336	286	245	223	229
Associate's Degrees	406	415	390	407	375
Bachelor's Degrees	0	95	84	92	92

Florida SouthWestern State College Total

	AY 2009-10	AY 2010-11	AY 2011-12	AY 2012-13	AY 2013-14
Certificates	375	322	279	256	251
Associate's Degrees	1836	2213	2422	2377	2308
Bachelor's Degrees	59	273	310	356	332

School of Health Professions

Degrees and Certificates Conferred Academic Years 2009-10 - 2013-14

Bachelor's Degrees					
Major	AY 2009-10	AY 2010-11	AY 2011-12	AY 2012-13	AY 2013-14
Cardiopulmonary Sciences	---	---	1	5	9
Nursing	---	95	83	87	83

Associate's Degrees					
Major	AY 2009-10	AY 2010-11	AY 2011-12	AY 2012-13	AY 2013-14
Cardiovascular Technology	11	12	13	11	18
Dental Hygiene	17	16	16	14	14
Emergency Medical Services	30	37	29	53	40
Fire Science Technology	24	32	13	19	14
Health Information Technology	---	1	14	15	10
Nursing	272	277	254	238	224
Radiologic Technology	28	20	20	26	21
Respiratory Care	24	20	31	31	34

Certificates					
Major	AY 2009-10	AY 2010-11	AY 2011-12	AY 2012-13	AY 2013-14
Emergency Medical Technician	263	213	152	137	141
Firefighter Minimum Standards	60	25	39	6	31
Paramedic	13	48	54	80	57

Total					
	AY 2009-10	AY 2010-11	AY 2011-12	AY 2012-13	AY 2013-14
Bachelor's Degrees	0	95	84	92	92
Associate's Degrees	406	415	390	407	375
Certificates	336	286	245	223	229

Source: Local Banner data

School of Education

Degrees and Certificates Conferred Academic Years 2009-10 - 2013-14

Bachelor's Degrees					
Major	AY 2009-10	AY 2010-11	AY 2011-12	AY 2012-13	AY 2013-14
Elementary Education	11	92	102	82	88
Middle Grades Language Arts Education	---	---	---	10	6
Middle Grades Mathematics Education	---	---	1	7	6
Middle Grades Science Education	---	---	---	---	4
Secondary Biology Education	3	2	6	---	---
Secondary Mathematics Education	1	6	8	4	2

Associate's Degrees					
Major	AY 2009-10	AY 2010-11	AY 2011-12	AY 2012-13	AY 2013-14
Early Childhood Education	8	18	9	7	1

Total					
	AY 2009-10	AY 2010-11	AY 2011-12	AY 2012-13	AY 2013-14
Bachelor's Degrees	15	100	117	103	106
Associate's Degrees	8	18	9	7	1

School of Business and Technology

Degrees and Certificates Conferred Academic Years 2009-10 - 2013-14

Bachelor's Degrees					
Major	AY 2009-10	AY 2010-11	AY 2011-12	AY 2012-13	AY 2013-14
Public Safety Administration	28	38	30	42	37
Supervision and Management	16	40	79	119	97

Associate's Degrees					
Major	AY 2009-10	AY 2010-11	AY 2011-12	AY 2012-13	AY 2013-14
Accounting Technology	6	20	22	15	16
Architectural Design & Construction Technology	---	---	---	---	1
Business Administration and Management	34	60	39	34	38
Civil Engineering Technology	---	---	---	---	4
Computer Programming Analysis	7	8	8	7	12
Crime Scene Technology	10	9	15	9	14
Criminal Justice Technology	50	54	65	66	60
Drafting and Design Technology	30	24	16	12	13
Golf Course Operations	12	3	3	1	---
Internet Services Technology	3	7	7	2	---
Networking Services Technology	18	17	33	21	25
Paralegal Studies	37	50	38	41	35

Certificates					
Major	AY 2009-10	AY 2010-11	AY 2011-12	AY 2012-13	AY 2013-14
Accounting Technology Management	4	7	10	10	3
Business Data Processing	8	1	4	1	---
Computer Programmer	---	---	---	---	1
Computer Programming Specialist	16	8	3	11	2
Crime Scene Technician	4	13	3	4	4
Information Technology Management	---	---	---	---	6
Information Technology Support Specialist	---	---	---	3	1
Small Business Management	7	7	14	4	5

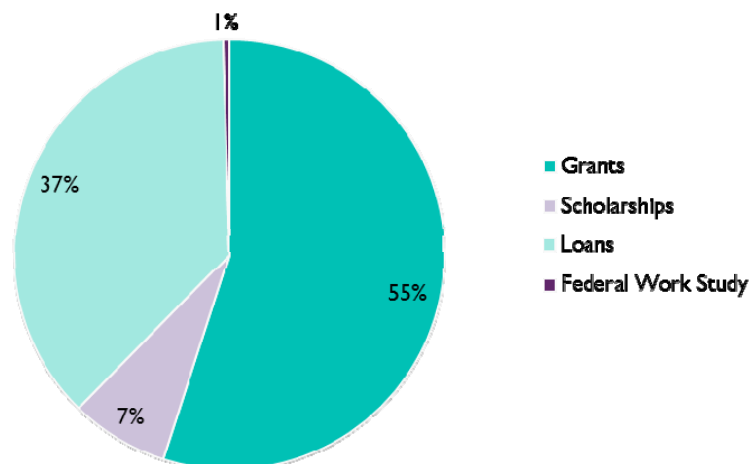
Total					
	AY 2009-10	AY 2010-11	AY 2011-12	AY 2012-13	AY 2013-14
Bachelor's Degrees	44	78	109	161	134
Associate's Degrees	207	252	246	208	218
Certificates	39	36	34	33	22

Source: Local Banner data

Student Financial Aid Paid Fiscal Year 2013-14

	Awards	Total Amount Paid	Average Amount Paid per Award
Grants			
Federal Pell Grant	7707	\$24,885,744	\$3,229
Federal SEOG Grant	343	\$319,111	\$930
Florida Grants	498	\$775,618	\$1,557
Scholarships			
Florida Scholarships	765	\$901,561	\$1,179
Institutional/ Foundation Scholarships	1821	\$2,586,214	\$1,420
Loans			
Federal Direct Subsidized Loan	3757	\$12,082,665	\$3,216
Federal Direct Unsubsidized Loan	1405	\$5,158,020	\$3,671
Federal Direct Loan Parent PLUS	18	\$183,918	\$10,218
Private Loan	20	\$159,869	\$7,993
Federal Work Study			
Federal Work Study	94	\$234,220	\$2,492

	Unduplicated Students	Total Amount Paid	Average Amount Paid per Student
Grants	7712	\$25,980,473	\$3,369
Scholarships	1979	\$3,487,775	\$1,762
Loans	4198	\$17,584,472	\$4,189
Federal Work Study	94	\$234,220	\$2,492
Paid Any Financial Aid	9819	\$47,286,941	\$4,816



Source: Local Banner data

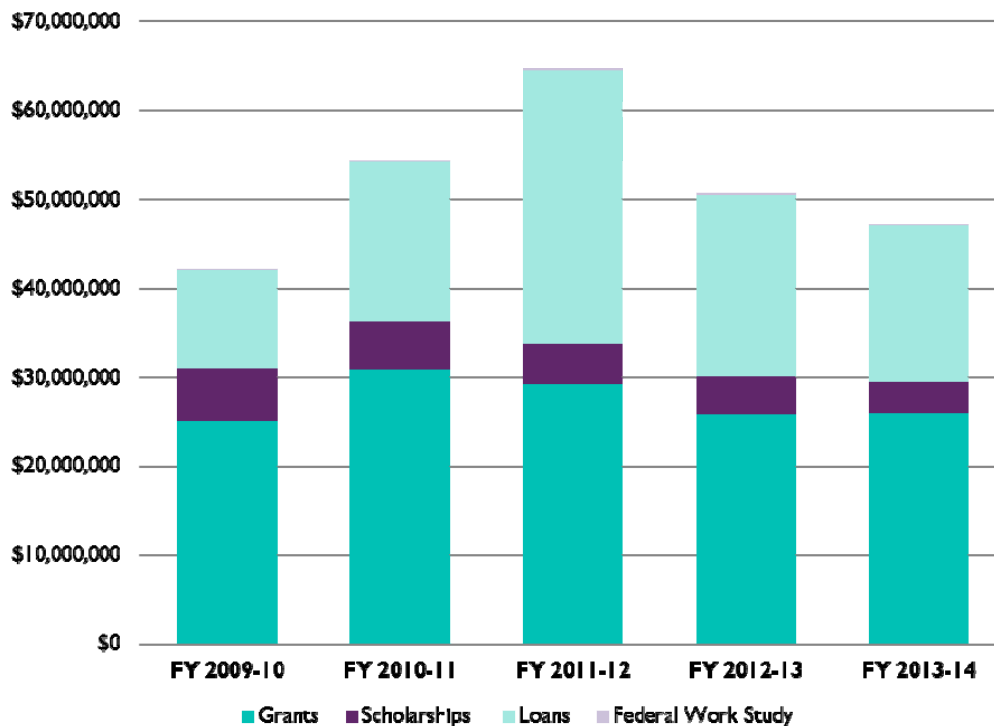
Student Financial Aid Paid FY 2009-10 - FY 2013-14

Total Amount Paid

	FY 2009-10	FY 2010-11	FY 2011-12	FY 2012-13	FY 2013-14	5 Year % Change
Grants	\$24,979,694	\$30,928,055	\$29,251,509	\$25,823,453	\$25,980,473	4.0%
Scholarships	\$6,025,060	\$5,443,634	\$4,451,956	\$4,244,329	\$3,487,775	-42.1%
Loans	\$11,041,135	\$17,883,085	\$30,810,545	\$20,380,477	\$17,584,472	59.3%
Federal Work Study	\$130,228	\$182,649	\$202,697	\$216,569	\$234,220	79.9%
Total	\$42,176,117	\$54,437,423	\$64,716,707	\$50,664,828	\$47,286,941	12.1%

Unduplicated Students Paid

	FY 2009-10	FY 2010-11	FY 2011-12	FY 2012-13	FY 2013-14	5 Year % Change
Grants	7116	8601	8770	7658	7712	8.4%
Scholarships	3878	3280	2916	2502	1979	-49.0%
Loans	3073	4639	5205	4670	4198	36.6%
Federal Work Study	53	61	63	72	94	77.4%
Total	10412	11432	11382	9994	9819	-5.7%



Source: Local Banner

Fall 2014 Students Paid Financial Aid

	Students n	Paid Any Financial Aid	Paid Pell	Paid Any Scholarships	Paid Any Loans	Paid Federal Work Study
Headcount	15705	45.3%	34.6%	10.2%	18.4%	0.5%
Full-Time	5384	63.0%	47.9%	19.7%	24.4%	1.1%
Part-Time	10321	36.1%	27.7%	5.2%	15.3%	0.2%
Under 18	2275	2.3%	1.8%	0.6%	0.6%	0.0%
18 - 24	8382	51.5%	38.7%	13.7%	15.8%	0.7%
25 - 34	2970	55.4%	43.5%	7.8%	31.0%	0.4%
35 - 54	1910	54.6%	42.7%	10.2%	31.5%	0.3%
55 and Over	168	36.9%	25.6%	9.5%	22.6%	0.0%
Certificate	74	14.9%	10.8%	4.1%	5.4%	0.0%
Associate	14081	46.1%	35.7%	9.9%	18.0%	0.5%
Bachelor	1072	56.9%	37.6%	19.5%	33.7%	0.3%
Non-Degree	478	0.4%	0.0%	0.4%	0.0%	0.0%



Source: Local Banner data

The FSW Division of Libraries provides a comprehensive collection of print books, eBooks, streaming videos, journals, newspapers, magazines, and other resources, in addition to interlibrary loan and documentary delivery services, to support the curriculum and research needs of the college community. Most of these resources are accessible in full text through the libraries' website, which also features research guides and tutorials created by FSW librarians. The FSW Libraries has a robust instructional program, providing research instruction to students on a one-on-one basis, and to classes of students through formal library research instruction. FSW librarians also teach the one credit online course LIS 2004: Internet for College Research.

The following table provides an overview for 2013-2014 fiscal year of the Division of Libraries.

Books	Lee	Collier	Charlotte	Hendry/Glades	Division Total
Reference	1,960	651	801	140	3,552
Circulation	43,110	7,571	8,585	1,386	60,652
E-Books	Student Online Access				153,377
Total	45,070	8,222	9,386	1,526	217,581
Periodicals					
	Lee	Collier	Charlotte	Hendry/Glades	Division Total
In Print	50	21	73	0	144
Non-Print Resources					
	Lee	Collier	Charlotte	Hendry/Glades	Division Total
Electronic Databases:	Student Online Access				132
Journals/Magazines/Newspapers	Student Online Access				31,168
Streaming Videos	Student Online Access				31,168
DVD's	3,063	402	489	217	4,171
Kindles/ E-Readers	22	3	5	12	42
Anatomical Models	37	11	22	0	70
Total	3,122	416	516	229	35,583
Internet Computers					
	Lee	Collier	Charlotte	Hendry/Glades	Division Total
Main Floor (Student Use)	87	40	75	3	205
Computer Lab (Instructional and Student Use)	32	0	0	0	32
Library WEPA Stations	2	2	2	1	7
Instruction Use	3	0	0	0	3
Staff/Faculty Computers	21	5	9	2	37
PAC Terminals	4	0	0	0	4
Total	149	47	86	6	288
Staff					
	Lee	Collier	Charlotte	Hendry/Glades	Division Total
Professional Staff	7	1	1.5	1	10.5
Support Staff	4.5	3	3.5	0.5	11.5
Total	11.5	4	5	1.5	22

Source: Division of Libraries

Published by the Office of Institutional Research
Florida SouthWestern State College