

FACT BOOK

2015



FLORIDA
SOUTHWESTERN
STATE COLLEGE

General Information

Foreword	4
History of the College	6
Chronological Highlights	7
Accreditations	8
Purpose & Mission	9
Campus Maps	10

Administration and Faculty

Board of Trustees	15
President of Florida SouthWestern State College	16
Administration	17
Florida SouthWestern State College Executive Leadership Organizational Chart	19
Academic Affairs Organizational Chart	20
Institutional Advancement Organizational Chart	21
Administrative Services Organizational Chart	22
Student Affairs & Enrollment Management Organizational Chart	23
Foundation Board	24
Faculty & Staff	25

Enrollment

Fall Historical Enrollment	28
Fall Enrollment Executive Summary	29
Fall Lee Campus Profile	30
Fall Collier Campus Profile	32
Fall Charlotte Campus Profile	34
Fall Hendry/Glades Center Profile	36
Fall FSW Online Profile	38
Fall Students On Campus	40
Academic Year Enrollment by Attendance	44
Spring Headcount & FTE Enrollment	45
Summer Headcount & FTE Enrollment	46
Fall Headcount & FTE Enrollment	47
Fall Enrollment by Full-Time/Part-Time & Fall Average Credit Hours	48
Fall Full-Time/Part-Time Enrollment by Credit Hours Enrolled	49
Fall Enrollment by Residency Status	50
Fall Enrollment by Race and Ethnicity	51
Fall Enrollment by Gender and Age	52

Enrollment Continued

Fall Enrollment by Age	53
Fall Developmental Studies Enrollment	54
Fall English for Academic Purposes Enrollment	55
Fall Dual Enrollment	56
Fall Enrollment by Primary Major	57

Enrollment by Location

Fall Enrollment by State of Origin	61
Fall Enrollment by State of Origin Map	62
Fall Enrollment by FL County of Origin	63
Fall Enrollment by FL County of Origin Map	64

Credit Hours

Spring Credit Hour Summary	66
Summer Credit Hour Summary	67
Fall Credit Hour Summary	68
Credit Hours by Academic Year	69
Credit Hours Produced by Campus	70
Credit Hours by Major and School	71

Academic Achievement

Degrees & Certificates Offered	73
Degrees & Certificates Conferred	74
Demographics by Degree	78

Student Financial Aid

Student Financial Aid Paid Fiscal Year 2014-15	82
Student Financial Aid Paid FY 2010-11–FY 2014-15	83
Fall 2015 Students Paid Financial Aid	84

Institutional Information

Spring 2016 Student Athletes	86
Libraries	87

The Office of Institutional Research is pleased to present the 2015 edition of the Florida SouthWestern State College Fact Book. The Fact Book is an annual publication that provides a comprehensive point of reference about the College, its history, and its progress. It contains a broad spectrum of facts and figures including general information, student enrollment, administration and faculty, and academic achievement. The 2015 edition of the Fact Book mainly utilizes Fall 2015 census data and fiscal year 2015 data.

The Fact Book is a collaborative effort with many individuals and offices across campus and we would like to extend our gratitude to those who provided data and support for this publication.

This year's edition also features FSW student photography selected from the 2015 Spring and Fall sections of Intro to Digital Photography taught by Professor Steven Chase. The cover photograph was taken by John Higgs.

Abby Willcox

Director, Institutional Research

Kelli Dunlap

Assistant Director, Institutional Research

Kim Buxton

Research Analyst, Institutional Research

Office of Institutional Research

www.fsw.edu/rta/reports

(239) 489-9059



GENERAL INFORMATION

Photo by Jorge Mendez

Florida SouthWestern State College was formally established in 1961 by the Florida Legislature as Edison Junior College. In 1965, the main campus was established on 80 acres in Fort Myers. Edison received accreditation from the Commission on Colleges of the Southern Association of Colleges and Schools (SACSCOC) in 1966. Since this initial accreditation, the College has undergone reaffirmation in 1971, 1981, 1991, 2001, and 2013. Accreditation at Level II membership was granted in 2005, and continued in 2007 following a site visit.

Edison Junior College was renamed Edison Community College in 1972 as a reflection of its expanded mission, and opened centers in Collier and Charlotte counties that same year. The College's service area represents tremendous diversity in both geography and economy. The Gulf Coast counties of Lee, Charlotte and Collier have experienced explosive population growth. In contrast, Glades and Hendry counties to the east remain rural, agrarian communities dependent on cattle and sugar cane production. Aligned with area growth, the College opened two permanent campuses, the Collier Campus in Naples in 1992 and the Charlotte Campus in Punta Gorda in 1997. In 2009, the College moved into a 19-acre facility in LaBelle known as the Hendry/Glades Center.

In 2001, the Florida Legislature authorized community colleges to offer limited baccalaureate degrees in areas of workforce need. Edison re-evaluated its mission statement and in 2006 enrolled 13 students into the Bachelors of Applied Science in Public Safety and Management program. In August 2008, following the creation of the new State College System and to support the College's addition of baccalaureate programs, the District Board of Trustees approved the name Edison State College. The College's mission reflects a commitment to all levels of educational attainment for the students and community served for over 50 years. The College now offers 10 baccalaureate programs.

In 2013, the proposal for the new name, Florida SouthWestern State College, was brought before the college's District Board of Trustees for review and approval. In September of 2013, they unanimously approved the name. From there, the process began to seek legislative approval for the new name. Governor Rick Scott signed the bill in May and it became law.

July 1, 2014. The Lee Campus in Fort Myers was renamed the Thomas Edison Campus. Starting in Spring 2016, the Florida SouthWestern State College Buccaneers will return to competition with softball and baseball teams. A record \$5 million gift from Suncoast Credit Union ensured the start of construction of the arena, which when completed in Fall 2016, will be home to FSW's men's and women's basketball teams, in addition to community events, concerts, tournaments, graduations and more.

The year 2015 also marked the first year the State Board of Education approved performance funding for Florida's 28 public state colleges. FSW earned the Gold Tier rank. The metrics used to measure the colleges were: Job Placement, Completion Rates, Retention Rates, and Completer Entry Level Wages. FSW earned the highest points possible in two of the categories: Job Placement and Completer Entry Level Wages. Similar to the model established for the State University System, the college system performance funding includes money from each college's base state budget, which is at risk if the college does not perform to established benchmarks.

2014

- January: Carl McAloose is named Director, Intercollegiate Athletics
- February: Governor Rick Scott appoints Byron Donalds and Eric Loche, and reappoints Braxton Rhone and Chris Vernon to the college's District Board of Trustees
- April: Edison students elected President and Vice President of the Florida College System Student Government Association for the second consecutive year
- May: Florida Senate and House sub-committees approve name change to Florida SouthWestern State College
- May: Edison State College holds its final commencement ceremony under the Edison name
- May: Edison Collegiate High School, Lee Campus, holds first graduation ceremony
- May: FSW signs 10-year lease agreement for use of City of Palms Park for its baseball and softball teams
- July: Florida SouthWestern State College celebrates its new name with Spirit Day

2015

- January: Florida SouthWestern State College (FSW) announced a partnership with Suncoast Credit Union to commence plans to build the Suncoast Credit Union Arena. Suncoast Credit Union leaders committed \$5 million to make this vision a reality
- January: Both Florida SouthWestern Collegiate High Schools are listed in the Top Ten Florida schools
- April: FSW hosts press conference to announce Head Women's and Men's Basketball Coaches
- May: FSW student elected Vice President of the Florida College System Student Government Association for the third consecutive year
- May: FSW hosts first graduation ceremony as FSW
- July: FSW earns Gold Tier rank for performance funding
- July: FSW launches first edition of college magazine: *Spyglass*
- October: FSW & Greater Naples YMCA Announce Partnership

2016

- January: FSW baseball team plays first regular season game
- February: FSW softball team plays first regular season game

Florida SouthWestern State College is accredited by the Commission on Colleges of the Southern Association of Colleges and Schools to award associate and baccalaureate degrees. Contact the Commission on Colleges at 1866 Southern Lane, Decatur, Georgia 30033-4097 or call (404) 679-4500 for questions about the accreditation of Florida SouthWestern State College.

Normal inquiries about Florida SouthWestern State College, such as admission requirements, financial aid, educational programs, etc., should be addressed directly to Florida SouthWestern State College and not to the Commission's office.

In addition to accreditation by the Commission on Colleges of the Southern Association of Colleges and Schools, nine Florida SouthWestern State College programs are accredited by one of the following agencies.

- Cardiovascular Technology (AS): Commission on Accreditation of Allied Health Education Programs (CAAHEP) in conjunction with the Joint Review Committee in Cardiovascular Technology
- Dental Hygiene (AS): Commission on Dental Accreditation (CODA)
- Emergency Medical Services Technology (AS): Commission on Accreditation of Allied Health Education Programs (CAAHEP) in conjunction with the Committee on Accreditation of Educational Programs for the Emergency Medical Services Professions (CoAEMSP).
- Nursing (AS and BS): Accreditation Commission for Education in Nursing (ACEN)
- Radiologic Technology (AS): Joint Review Committee on Education in Radiologic Technology (JRCERT)
- Respiratory Care (AS): Commission on Accreditation for Respiratory Care (CoARC)
- Health Information Technology (AS): Commission on Accreditation for Health Informatics and Information Management Education (CAHIIM)
- Paramedic Certificate: Commission on Accreditation of Allied Health Education Programs (CAAHEP) in conjunction with the Committee on Accreditation of Educational Programs for Emergency Medical Services Professions (CoAEMSP)

Co-curricular

- Physical Therapy Assistant (AS): Commission on Accreditation in Physical Therapy Education (CAPTE) (via Inter-institutional agreement with Broward College)

VISION

Florida SouthWestern State College will be the catalyst for creating an innovative education system which provides accessible educational pathways that prepare students to be enlightened and productive citizens.

(Vision statement approved by the District Board of Trustees April 27th, 2010)

VALUES

We value student success, integrity, intellectual inquiry, and academic rigor.

(Values statement approved by the District Board of Trustees April 27th, 2010)

MISSION

The mission of Florida SouthWestern State College is to inspire learning; prepare a diverse population for creative and responsible participation in a global society; and serve as a leader for intellectual, economic, and cultural awareness in the community.

(Mission statement approved by the District Board of Trustees April 27th, 2010)

STRATEGIC DIRECTIONS

ENHANCING THE COLLEGE EXPERIENCE

1. Focus recruiting and admissions efforts
2. Create a robust residential life experience on Lee to support our residence hall
3. Explore the potential return of athletics as a component of student life / residential life
4. Increase scholarly activity vis-à-vis the creation of a sponsored programs office
5. Expand international education
6. Provide efficient processes that enhance or improve student, faculty and staff overall experience with the college
7. Explore new workforce-related certificate and degree offerings including additional \$10,000 degree options

INCREASING COMMUNITY CONNECTIONS

1. Fund new initiatives that hold promise for FSW
2. Emphasize the arts as a community resource
3. Refocus the direction for the FSW Foundation and enhance its role in the college
4. Increase service area coverage through regional vice presidents for economic and community development
5. Assess and respond to regional workforce needs

(Submitted to the Florida SouthWestern State College Board of Trustees July, 2014)

Map Key	
Walker Hall/	Humanities Hall/
Medical Museum of History.....A	Bob Rauschenberg Gallery.....L
Nursing Building.....AA	BB Mann Performing Arts Hall.....M
Gresham Hall.....B	Royal Palm Hall.....N
Gresham Annex.....C	Sabal Hall.....O
White Hall.....D	Areca Hall.....P
Physical Plant-Central.....DD	Howard Hall.....Q
Facilities Annex.....E	Physical Plant-West.....R
Shipping and Receiving.....F	Taeni Student Services Hall.....S
Presidio Information	Florida Southwestern Collegiate
Technology Center.....G	High School-Lee.....T
Leonhardt Hall.....H	Classroom Building.....U
Robinson Hall.....I	Lockmiller Child
Rush Library.....J	Development Center.....V
Hendry Hall.....K	LightHouse Commons.....W



Thomas Edison (Lee) Campus
 8099 College Parkway ♦ Fort Myers, Florida 33919
 (239) 489-9300
www.FSW.edu/lee





FLORIDA SOUTHWESTERN STATE COLLEGE

Collier Campus
7505 Grand Lely Drive, M-222 ♦ Naples, Florida 34113
(239) 732-3700
www.FSW.edu/collier

Rattlesnake Hammock Road



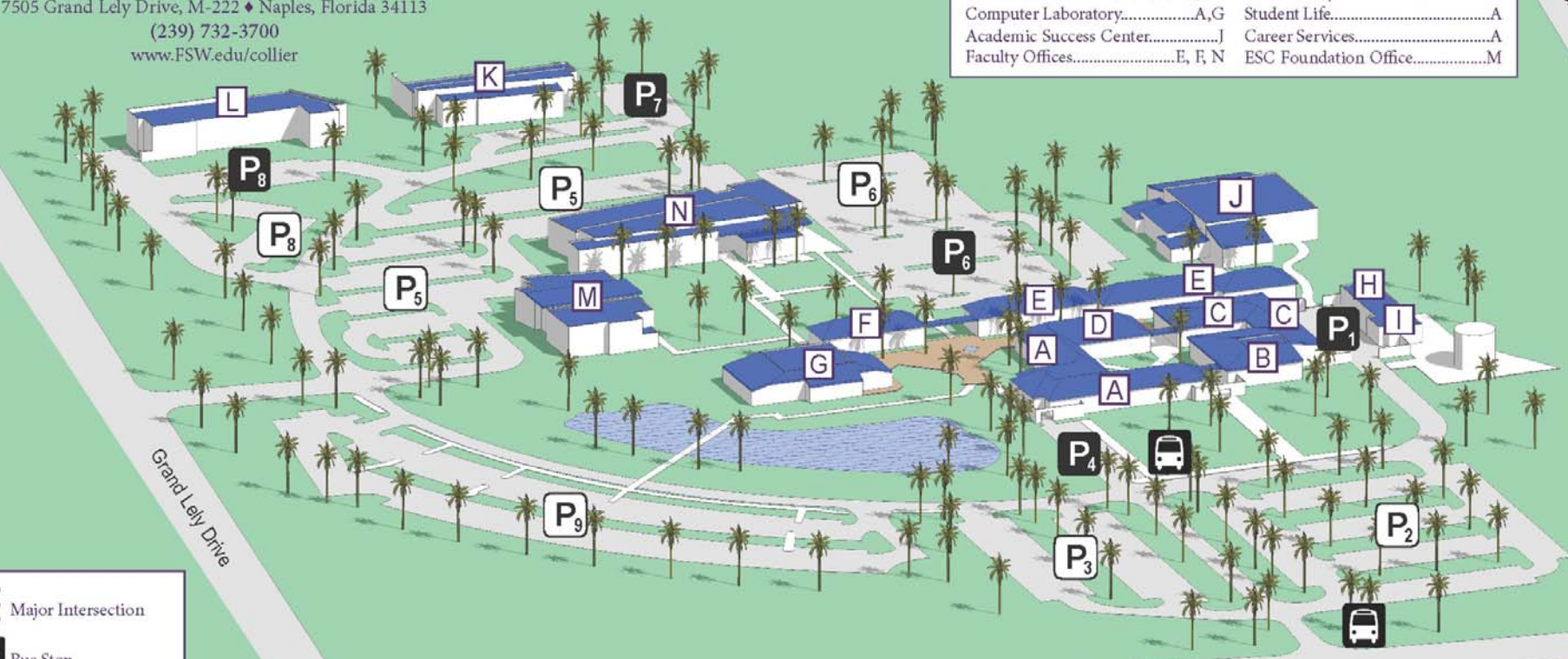
Map Key	
Administration.....M	Business & Technology Center.....J
Admissions & Student Services.....M	Plant Operations.....H, I
Cashier.....M	NCEF Early Childhood Development Center.....K
Auditorium.....B	NCEF Pediatric Dental Center/UF College of Dentistry.....L
Book Store.....M	Allen & Marla Weiss Health Sciences Hall.....N
Cafeteria.....C	Public Safety.....A
Student Center.....D	Student Life.....A
Library.....G	Career Services.....A
Classrooms.....A, B, E, F, G, J, N	ESC Foundation Office.....M
Computer Laboratory.....A, G	
Academic Success Center.....J	
Faculty Offices.....E, F, N	

Collier Boulevard CR-951

	Major Intersection
	Bus Stop
	Open Parking
	Other Parking

Grand Lely Drive

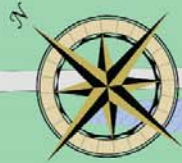
Lely Cultural Parkway





FLORIDA SOUTHWESTERN STATE COLLEGE

Charlotte Campus
 26300 Airport Road • Punta Gorda, Florida 33950
 (941) 637-5629
www.FSW.edu/charlotte



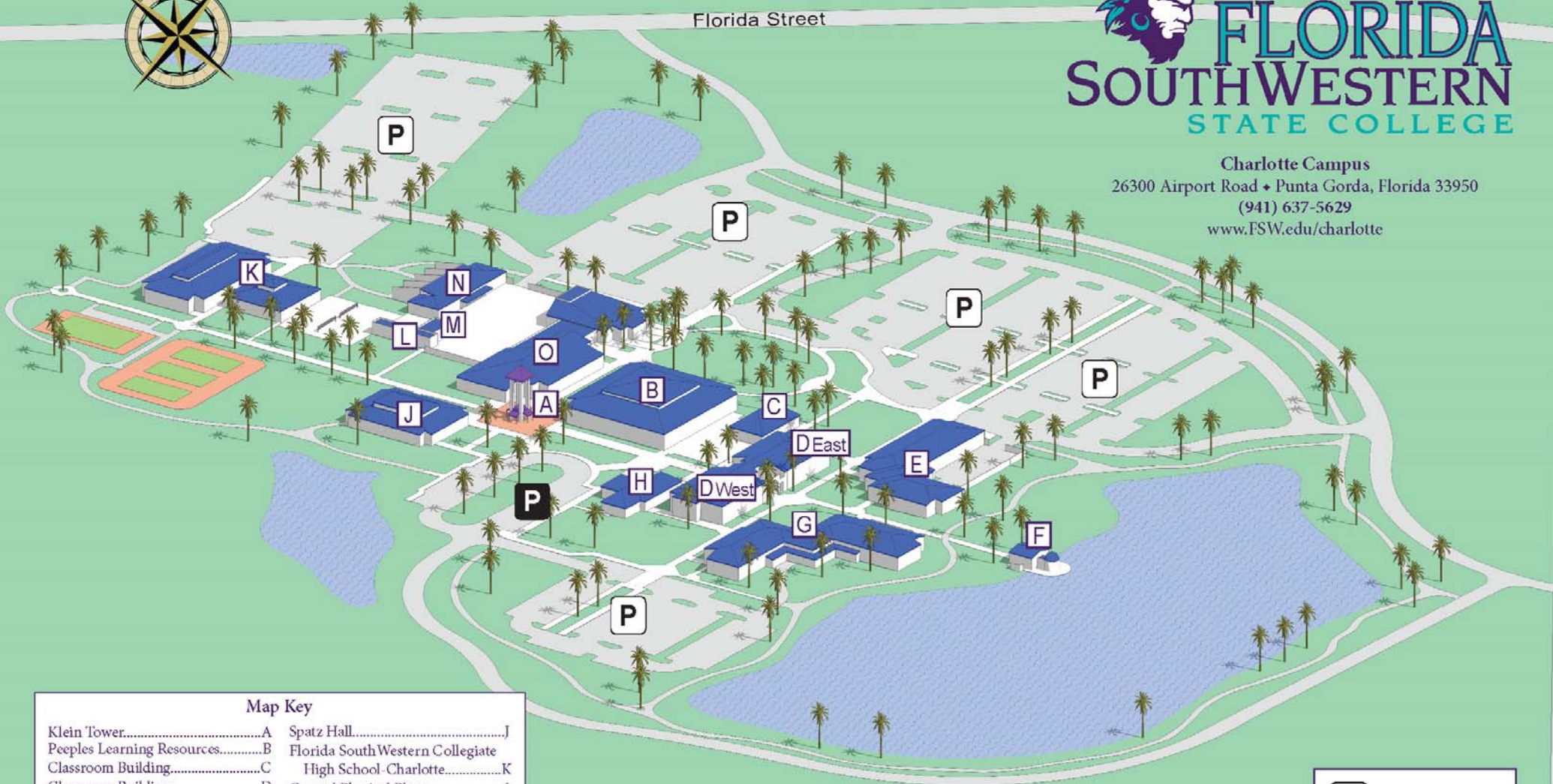
Florida Street

Airport Road

Map Key

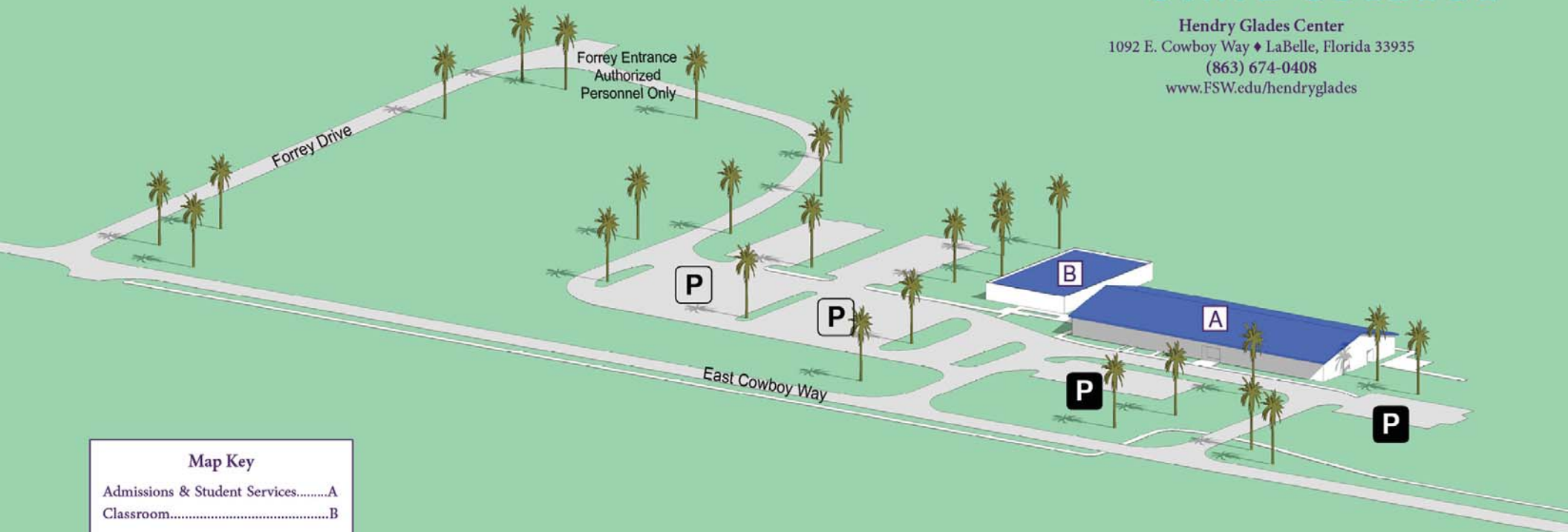
Klein Tower.....A	Spatz Hall.....J
Peeples Learning Resources.....B	Florida SouthWestern Collegiate High School - Charlotte.....K
Classroom Building.....C	Central Physical Plant.....L
Classroom Building.....D	Maintenance Building.....M
Jones Hall.....E	Physical Plant Building.....N
Moore Observatory.....F	Student Activities Building.....O
Yarger Science Hall.....G	
Faculty Building.....H	

	Open Parking
	Other Parking





Hendry Glades Center
1092 E. Cowboy Way ♦ LaBelle, Florida 33935
(863) 674-0408
www.FSW.edu/hendryglades



Map Key

Admissions & Student Services.....A
Classroom.....B

P Open Parking
P Other Parking



ADMINISTRATION AND FACULTY

Photo by John Higgs

Florida SouthWestern State College is governed by its District Board of Trustees composed of nine representatives from Charlotte, Collier, Hendry, Glades, and Lee counties. The first District Board of Trustees was appointed in 1968 by Governor Claude Kirk. The members are appointed to four-year terms by the Governor of Florida.

BOARD OF TRUSTEES MEMBERS

Brian Chapman, Jr., B.A., Lee County (Chair)

Tristan “Tris” Chapman, MBA, Hendry County (Vice Chair)

Byron Donalds, B.S., Collier County

Eric Loche, B.A., Charlotte County

Julia G. Perry, B.A.E., Glades County

Braxton C. Rhone, B.S., Lee County

Marjorie Starnes-Bilotti, J.D., Lee County

Christopher T. Vernon, J.D., Collier County

Sankey “Eddie” Webb III, CPA, MBA, Charlotte County



Florida SouthWestern State College welcomed Dr. Jeff Allbritten as the Fourth President on July 31, 2012. Prior to this appointment he served as President of Macon State College in the University System of Georgia.

Dr. Allbritten has a special passion for Florida SouthWestern State College as he previously served for eight years as president of the Collier Campus, where he successfully expanded enrollment and course offerings, as well as the campus itself by leading the fundraising and planning efforts culminating in the construction of four new buildings.

Dr. Allbritten's career in higher education spans 26 years and three different state university and college systems, including Middle Tennessee State University, Florida State College at Jacksonville, and Broward College in Fort Lauderdale, where he opened and led a new campus.

Dr. Allbritten holds a Doctorate in Chemistry from Middle Tennessee State University, a Master's degree in Mathematics and a Bachelor's degree in Chemistry, both from Murray State University.

He is a self-proclaimed Europhile and has traveled extensively throughout Europe with his wife, Liz.

President's Office

Dr. Jeffery Allbritten	President
Dr. Henry Peel	Chief of Staff
Dr. Denis Wright	Regional Vice President, Economic & Community Development/Charlotte Campus President
Dr. Robert Jones	Regional Vice President, Economic & Community Development/Collier Campus President
Dr. Laura Weir	Executive Director, International Education
Mr. Matthew Holliday	Director, Governmental Relations
Mr. Mark Lupe	General Counsel
Ms. Susan Marcy	Director, Legal & Risk
Mr. Carl McAloose	Director, Intercollegiate Athletics

Academic Affairs

Dr. Jeff Stewart	Interim Provost and Vice President for Academic Affairs
Dr. Eileen DeLuca	Associate Vice President for Academic Affairs
Dr. Emery Alford	Dean, School of Arts, Humanities, and Social Sciences
Dr. Martin McClinton	Dean, School of Pure and Applied Sciences
Dr. John Meyer	Dean, School of Business and Technology
Dr. Lawrence Miller	Dean, School of Education
Dr. Marie Collins	Dean, School of Health Professions
Dr. Mary Myers	Dean, Division of Teaching Innovation, Faculty Development and Online Learning
Mr. William Shuluk	Library Coordinator/Head Librarian, Libraries
Mr. Jason Dudley	Chief Information Officer, Information Technology and Enterprise Applications
Mr. Garnett Salmon	Registrar
Ms. Michelle Fanslau	Associate Dean, Baccalaureate Programs and Academic Services
Dr. Kathy Clark	Associate Dean, Academic Success
Dr. Thomas Rath	Associate Dean, School of Business and Technology
Dr. Jeffrey Elsberry	Associate Dean, Cardiopulmonary and Emergency Care Programs
Dr. Marsha Weiner	Associate Dean, Nursing Programs
Mr. Jeff Gibbs	Director, Hendry Glades Center
Dr. Susan Hibbard	Director, Effectiveness and Accountability
Ms. Abby Willcox	Director, Institutional Research
Ms. Monica Moore	Director, Academic Support Programs
Dr. Joseph Van Gaalen	Director, Academic Assessment
Ms. Kristin Corkhill	Director, Dual Enrollment
Ms. Lynne Crandall	Director, Simulation Education
Mr. Robert Anderson	Director, Online Learning, Teaching and Innovation
Dr. Melissa Rizzuto	Director, Faculty Development and Training
Mr. Jade Dellinger	Director, Rauschenberg Gallery
Dr. Wendy Athens	Director, Design and Development
Ms. Whitney Rhyne	Director, First Year Experience
Mr. Adrian Kerr	Director, Corporate Training and Services

Advancement

Dr. Louis Traina	Vice President, Institutional Advancement and Executive Director of the Foundation
Mr. Kevin Miller	Senior Director, Administration and Development
Ms. Susan Ellis	Senior Director, Development
Dr. Joseph Kramp	Director, Development
Ms. Reba Singleton	Director, Donor Relations and Event Management
Ms. Teresa Morgenstern	Director, Communications and Public Information Officer

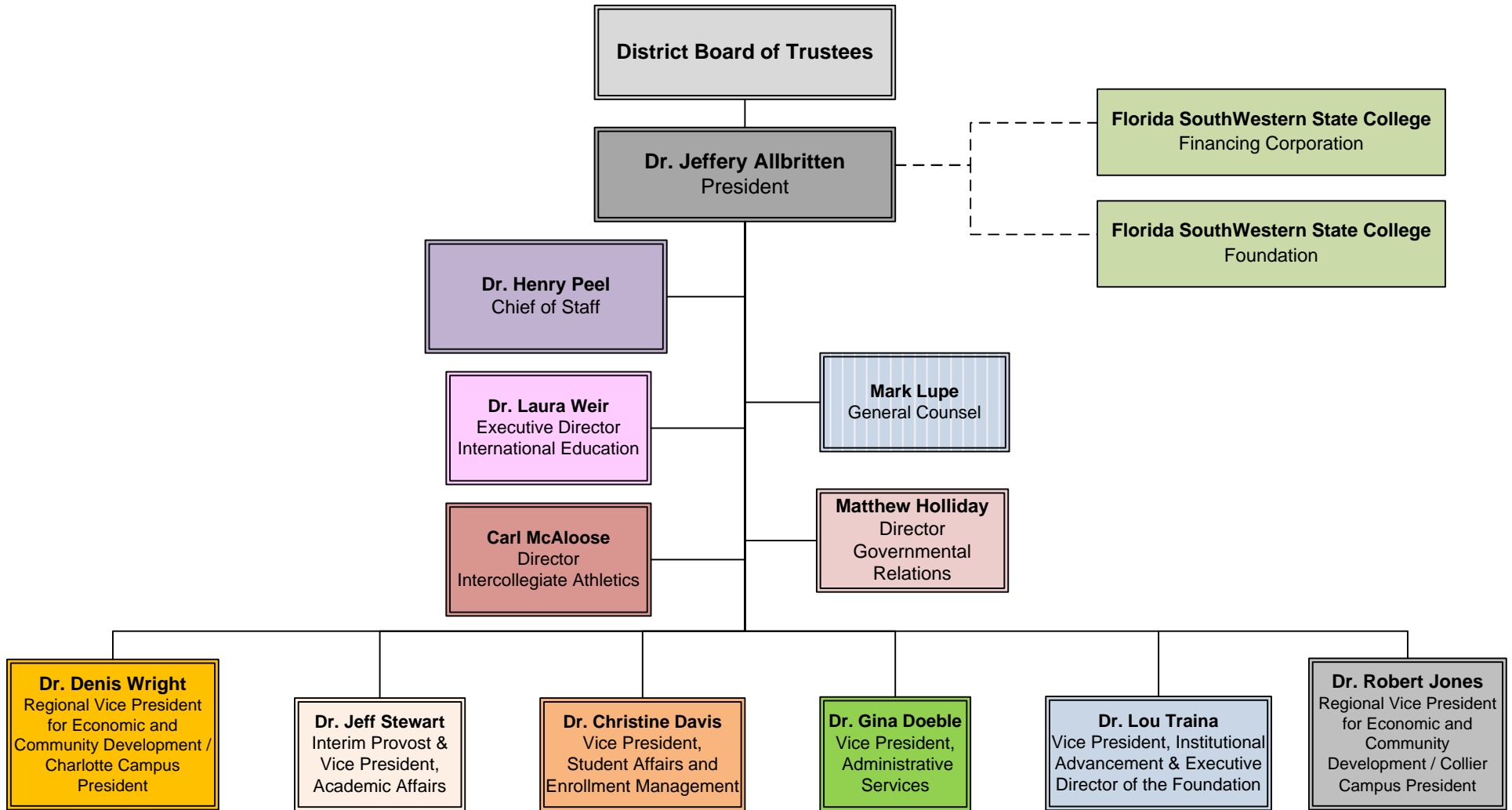
Administrative Services

Dr. Gina Doeble	Vice President, Administrative Services
Mr. Tobias Discenza	Assistant Vice President, Financial Services
Mr. Dwain Keddo	Bursar
Ms. Kathleen Porter	Controller
Ms. Debra Kivel	Director, DSO Finance
Ms. Judy Pultro	Director, Auxiliary Services
Mr. Al Hermsen	Interim Director, Student Financial Aid
Mr. Rick Parfitt	Director, Public Safety
Mr. Ron Copass	Interim Director, Facilities Planning and Development
Mr. Justin Long	Director, Housing and Residence Life Operations
Ms. Susan Bronstein	Director, Human Resources
Ms. Lisa Tudor	Director, Procurement Services
Ms. Jana Sabo	Title IX Coordinator/Equity Officer

Student Affairs

Dr. Christine Davis	Vice President, Student Affairs and Enrollment Management
Dr. Laura Antczak	Assistant Vice President, Enrollment and Student Success
Mr. Mark Bukowski	Associate Dean of Students
Ms. Kristi Rickman	Associate Dean, Student Life and Orientation
Ms. Gail Murphy	Collier Campus Dean, Student Affairs and Academic Services
Dr. Christy Gilfert	Charlotte Campus Dean, Student Affairs and Academic Services
Ms. Amber McCown	Director, Admissions
Ms. Angela Hartsell	Director, Adaptive Services
Ms. Sarah Liekweg	Director, Upward Bound
Mr. Andrae Jones	Director, Academic Advising
Ms. Denise Swafford	Director, Testing Services

Executive Leadership



Academic Affairs

Dr. Jeffery Allbritten
President

Dr. Jeff Stewart
Interim Provost and Vice
President of Academic Affairs

Dr. Eileen DeLuca
Associate Vice President of
Academic Affairs

Dr. John Meyer
Dean
School of Business
and Technology

Dr. Marie Collins
Dean
School of Health
Professions

Dr. Lawrence Miller
Dean
School of Education
and Charter Schools

Dr. Emery Alford
Dean
School of Arts,
Humanities, and
Social Sciences

Dr. Martin McClinton
Dean
School of Pure and
Applied Sciences

Dr. Mary Myers
Dean
Division of Teaching
Innovation, Faculty
Development, and
Online Learning

Dr. Kathy Clark
Associate Dean
Academic Success

William Shuluk
Library Coordinator
and Head Librarian

Dr. Joseph van Gaalen
Director
Academic Assessment

Monica Moore
Director
Academic Support
Programs

Michelle Fanslau
Associate Dean
Baccalaureate
Programs and
Academic Services

Garnett Salmon
Registrar

Jason Dudley
Chief Information
Officer

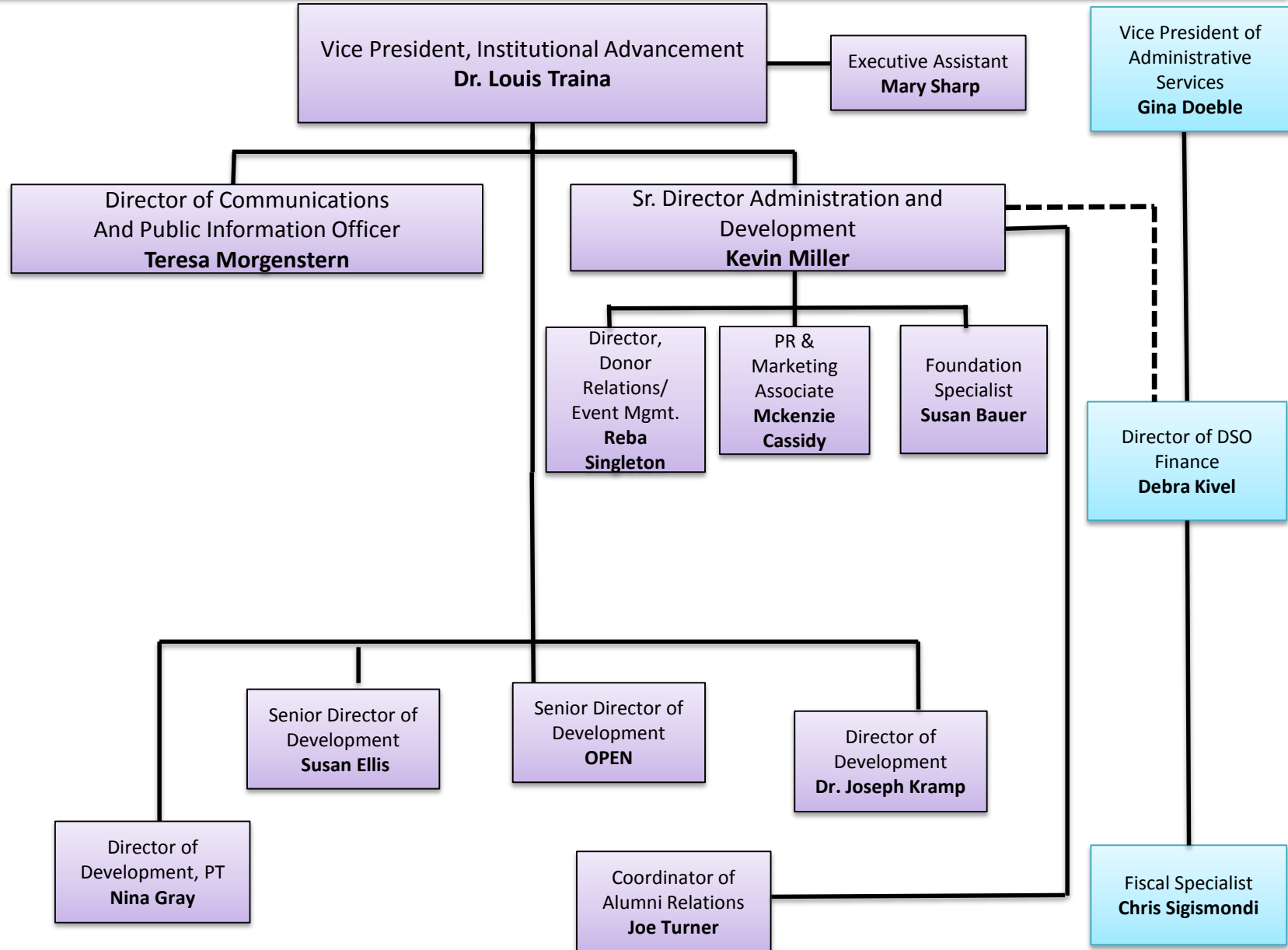
Dr. Susan Hibbard
Director
Effectiveness &
Accountability

Abby Willcox
Director
Institutional Research

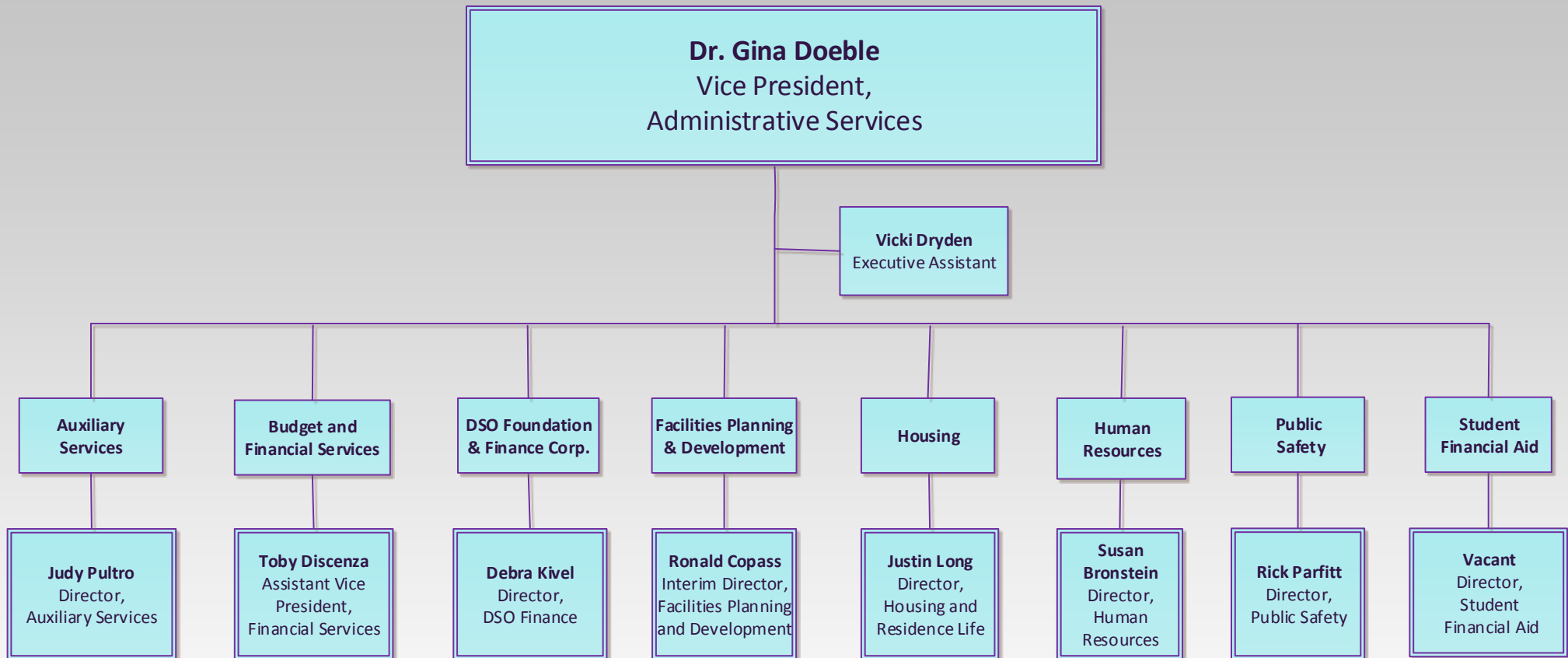
Jeff Gibbs
Director
Hendry/Glades
Center

Jade Dellinger
Director
Rauschenberg
Gallery

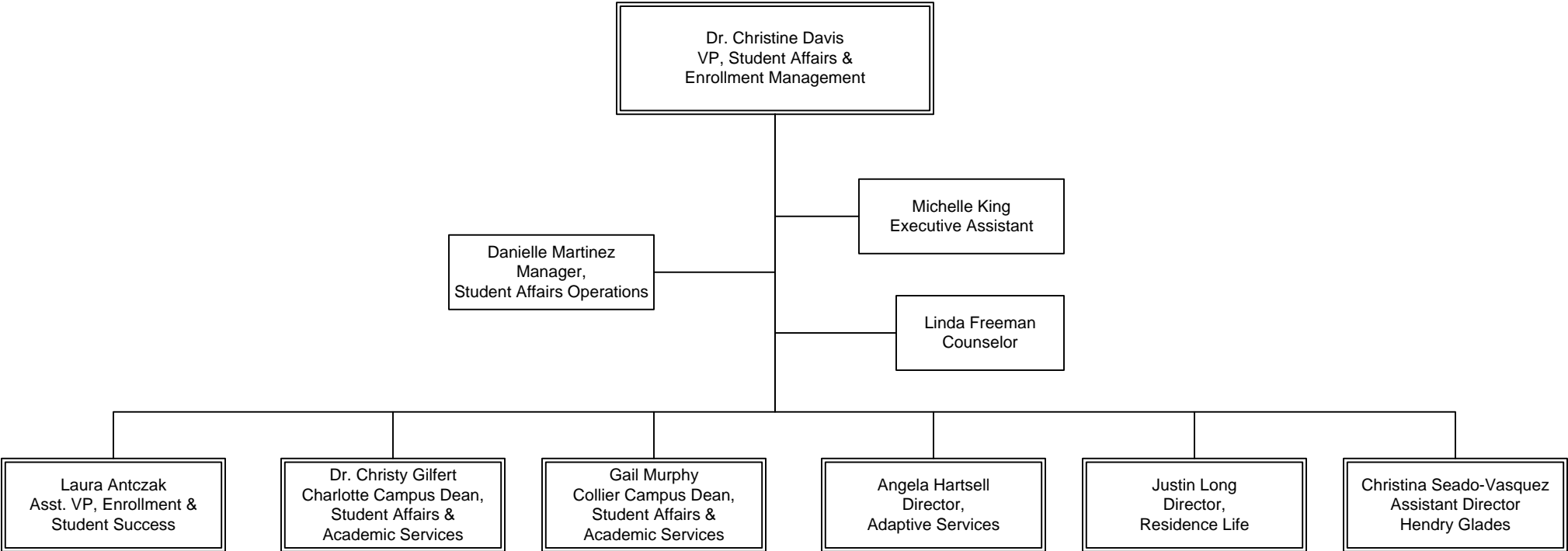
Florida SouthWestern State College Advancement Division Organizational Chart



ADMINISTRATIVE SERVICES



Division of Student Affairs & Enrollment Management Overview



Florida SouthWestern State College Foundation, Inc.

EXECUTIVE COMMITTEE

Tammy Surratt, Chairman
Bruce Schultz, Vice Chairman
Dilman Thomas, Treasurer
Charlotte Miller, Secretary
Marjorie Starnes-Bilotti, Board of Trustees Designee
Jim Nolan, Charlotte
Carey Soud, Hendry/Glades
Gordon Watson, Collier

BOARD MEMBERS

Randolph D. Brock III
Dorothy Fitzgerald
Carl P. Grissom
Alan Hilfiker
Marcia Hobe
Deanne B. Kyle
Dr. Paula Malone
Mary Lee Mann
Richard A. Penix
Victoria B. Stephan
Deborah Stewart
Andy Tilton
Ellen Webb

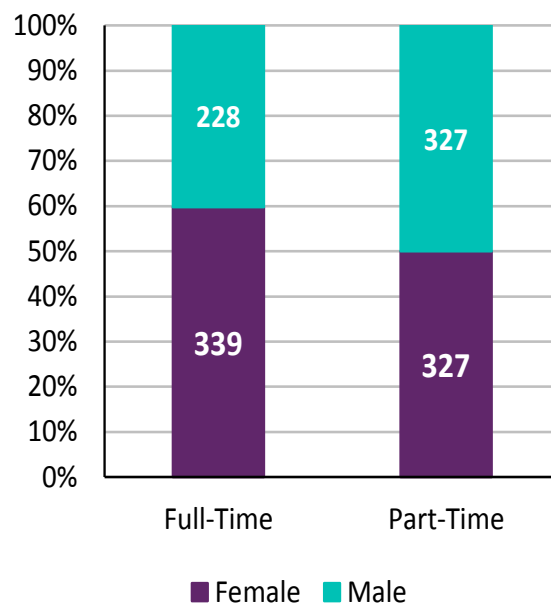
Fall 2015 Faculty and Staff Profile

Occupational Categories

	Full-Time	Part-Time
	<u>n</u>	<u>n</u>
Primarily Instruction	176	418
Librarians	8	0
Library Technicians	0	2
Student and Academic Affairs and Other Education Services	56	166
Management	45	0
Business and Financial Operations	52	2
Computer, Engineering, and Science	36	1
Community, Social Service, Legal, Arts, Design, Entertainment, Sports, and Media	33	15
Healthcare Practitioners and Technical	27	1
Service	31	7
Office and Administrative Support	98	42
Natural Resources, Construction, and Maintenance	5	0
Total Faculty and Staff	567	654

Gender and Race/Ethnicity

	Full-Time	Part-Time
	<u>n</u>	<u>n</u>
Female	339	327
Male	228	327
Non-resident Alien	8	0
Hispanic/Latino	40	48
American Indian/Alaskan	6	2
Asian	9	21
Black/African American	36	36
Native Hawaiian/Pacific Islander	0	0
White	464	541
Two or more races	1	4
Unknown	3	2

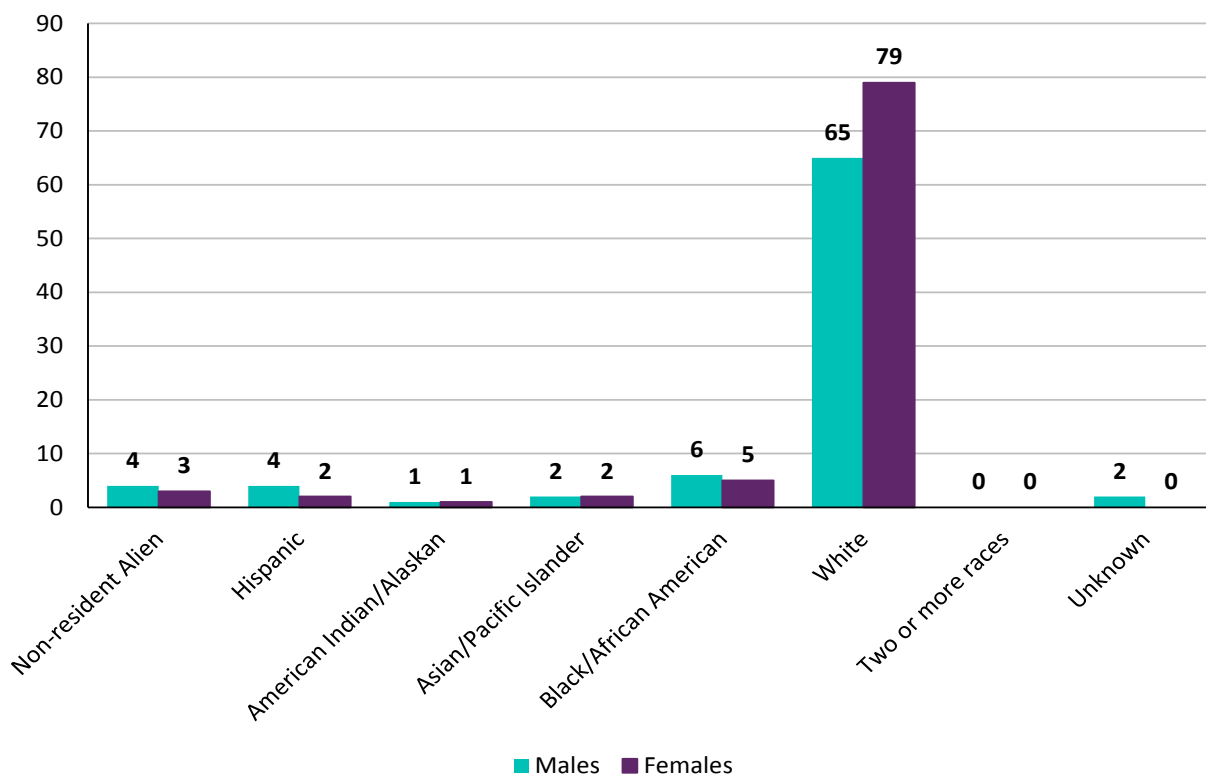


Source: Local Banner data

Full-Time Instructional Faculty

	Fall 2013	Fall 2014	Fall 2015	3-Year % Change
Female	93	91	92	-1.1%
Male	77	81	84	9.1%
Non-resident Alien	9	9	7	-22.2%
Hispanic	5	6	6	20.0%
American Indian/Alaskan	2	2	2	0.0%
Asian	1	3	4	300.0%
Black/African American	8	9	11	37.5%
White	142	141	144	1.4%
Two or more races	0	0	0	n/a
Unknown	3	2	2	-33.3%

Fall 2015 Instructional Faculty



Source: Local Banner data

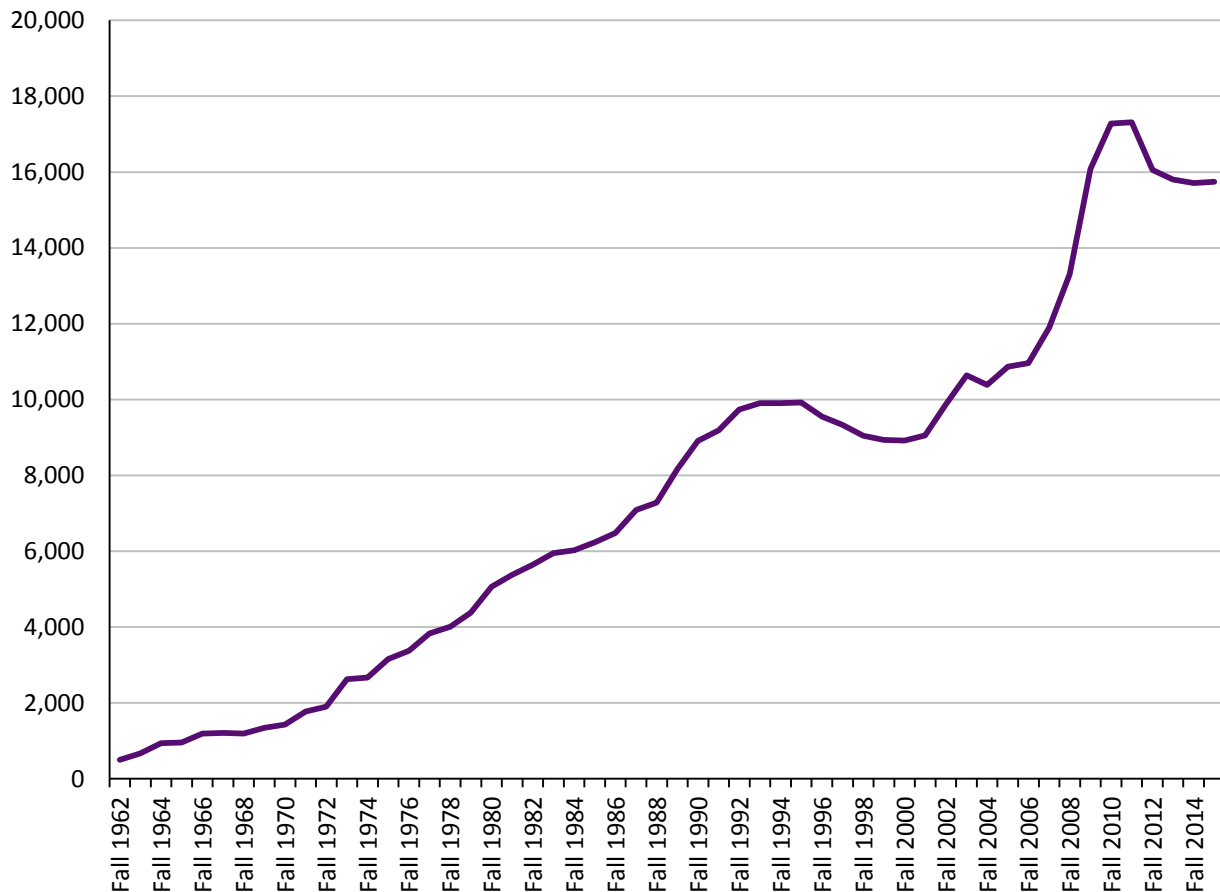


STUDENT ENROLLMENT

Photo by Talia Garcia

Fall Historical Enrollment

Term	Enrollment	Term	Enrollment	Term	Enrollment	Term	Enrollment
Fall 1962	498	Fall 1976	3,379	Fall 1990	8,907	Fall 2004	10,383
Fall 1963	674	Fall 1977	3,831	Fall 1991	9,190	Fall 2005	10,866
Fall 1964	940	Fall 1978	4,009	Fall 1992	9,740	Fall 2006	10,964
Fall 1965	953	Fall 1979	4,383	Fall 1993	9,909	Fall 2007	11,898
Fall 1966	1,197	Fall 1980	5,066	Fall 1994	9,904	Fall 2008	13,309
Fall 1967	1,211	Fall 1981	5,379	Fall 1995	9,924	Fall 2009	16,077
Fall 1968	1,194	Fall 1982	5,647	Fall 1996	9,551	Fall 2010	17,280
Fall 1969	1,342	Fall 1983	5,947	Fall 1997	9,334	Fall 2011	17,312
Fall 1970	1,427	Fall 1984	6,022	Fall 1998	9,044	Fall 2012	16,052
Fall 1971	1,779	Fall 1985	6,233	Fall 1999	8,933	Fall 2013	15,800
Fall 1972	1,898	Fall 1986	6,483	Fall 2000	8,919	Fall 2014	15,705
Fall 1973	2,623	Fall 1987	7,088	Fall 2001	9,057	Fall 2015	15,742
Fall 1974	2,672	Fall 1988	7,283	Fall 2002	9,871		
Fall 1975	3,154	Fall 1989	8,171	Fall 2003	10,641		

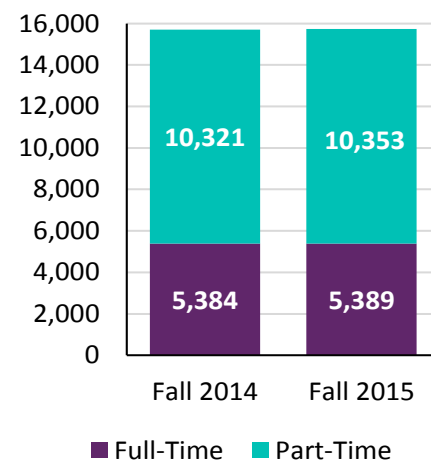


Source: Local Banner data

Fall 2015 Enrollment

Enrollment	Fall 2014		Fall 2015		Percent Change
	n	%	n	%	
Total	15,705	100.0	15,742	100.0%	0.2%
Full-Time	5,384	34.3	5,389	34.2%	0.1%
Part-Time	10,321	65.7	10,353	65.8%	0.3%
FTE*	4,475	---	4,647	---	3.8%

Enrollment



Credit Hour Production	Fall 2015		FTE* per Campus	Fall 2015
	n	%		
Total	139,424	100%	Total	4,647
Lee	71,663	51.4%	Lee	2,389
Collier	24,775	17.8%	Collier	826
Charlotte	11,926	8.6%	Charlotte	398
Hendry/Glades	3,036	2.2%	Hendry/Glades	101
FSW Online	28,024	20.1%	FSW Online	934

Gender & Race/Ethnicity	Hispanic	Amer Ind/ Nat Alask	Asian	Black/ Afr Amer	Nat Haw/ Pac Islldr	White	Two or More	Unknown	Total
Female	2,770	29	184	1,060	20	4,808	184	526	9,581
Male	1,695	17	133	676	6	3,121	126	335	6,109
Unknown	14	0	0	9	0	22	0	7	52
Total	4,479	46	317	1,745	26	7,951	310	868	15,742

Gender & Age	< 18	18 - 19	20 - 21	22 - 24	25 - 34	35 - 44	45 - 54	55 +	Total
Female	1,473	2,373	1,475	1,242	1,740	769	414	95	9,581
Male	848	1,698	1,167	878	1,006	302	158	52	6,109
Unknown	1	6	15	8	12	7	2	1	52
Total	2,322	4,077	2,657	2,128	2,758	1,078	574	148	15,742

Top 10 Majors

	n
1. AA General Studies	9,963
2. AA Nursing Entry Focus	933
3. Non-Degree Seeking	857
4. AS Nursing Basic Prog	452
5. AS Business Admin/Mgmt	440
6. BAS Supervision & Mgmt	414
7. BS Nursing	208
8. AS Criminal Justice Tech	207
9. AA Dental Hygiene Focus	183
10. AS Comp Prog & Analysis	181
AS Emer Med Serv Tech	181

Top 10 FL Counties

	n
1. Lee	8,459
2. Collier	4,117
3. Charlotte	1,560
4. Hendry	430
5. Sarasota	225
6. Broward	82
7. Miami-Dade	74
8. Desoto	63
9. Palm Beach	58
10. Glades	47

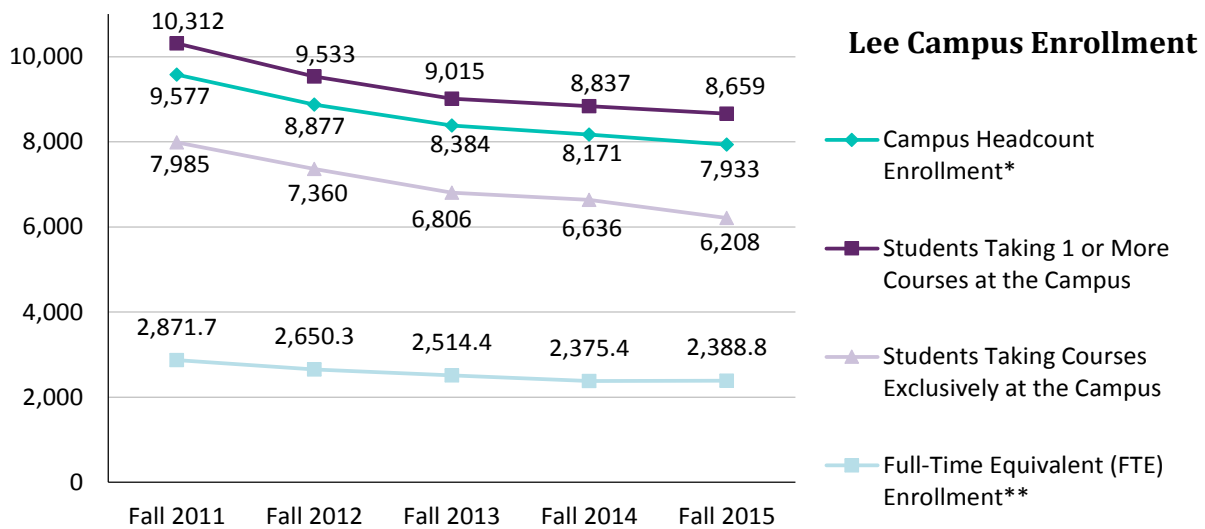
Top 10 Courses

	n
1. ENC 1101	3,794
2. SLS 1515	2,839
3. MAT 1033	2,025
4. MAC 1105	1,625
5. PSY 2012	1,623
6. BSC 1010	1,206
7. ENC 1102	1,190
8. BSC 1010L	1,157
9. SPC 1017	1,062
10. DEP 2004	892

Fall 2015

Enrollment

	Fall 2011	Fall 2012	Fall 2013	Fall 2014	Fall 2015
Campus Headcount Enrollment*	9,577	8,877	8,384	8,171	7,933
Percentage of Total FSW State College Headcount	55.3%	55.3%	53.1%	52.0%	50.4%
Students Taking 1 or More Courses at the Campus	10,312	9,533	9,015	8,837	8,659
Students Taking Courses Exclusively at the Campus	7,985	7,360	6,806	6,636	6,208
Full-Time Equivalent (FTE) Enrollment**	2871.7	2650.3	2514.4	2375.4	2388.8



Courses & SCH Production

	Fall 2011	Fall 2012	Fall 2013	Fall 2014	Fall 2015
Number of Course Sections	1,162	1,142	1,099	1,100	1,048
Total Duplicated Enrollment in Course Sections	27,909	26,046	24,725	24,382	23,927
Mean Number of Students Per Section	24.0	22.8	22.5	22.2	22.8
Student Credit Hour Production	86,152	79,455	75,432	71,262	71,663

Fall 2015 Student Credit Hour Production by Level and Part of Term

	Lower	Upper	Total
Total Student Credit Hour Production	68,894	2,769	71,663
Full Term (I)	66,200	2,166	68,366
Mini-A	269	345	614
Mini-B	685	252	937
Special C	411	6	417
Dual Enrollment	1,329	0	1,329

*Students are assigned campus headcount based on where an individual student is taking the maximum number of credit hours. If credit hours are equal at multiple campuses, the student's headcount is assigned to the campus with the lowest headcount enrollment from the prior term. If credit hours are equal between a campus and FSW Online, the headcount is assigned to the physical campus.

**Total student credit hour production by campus divided by 30

Source: Local Banner data

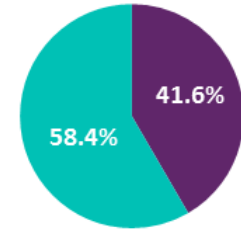
Fall 2015

Total # of Students* 7,933
FTE Enrollment** 23,88.8

Gender by Age

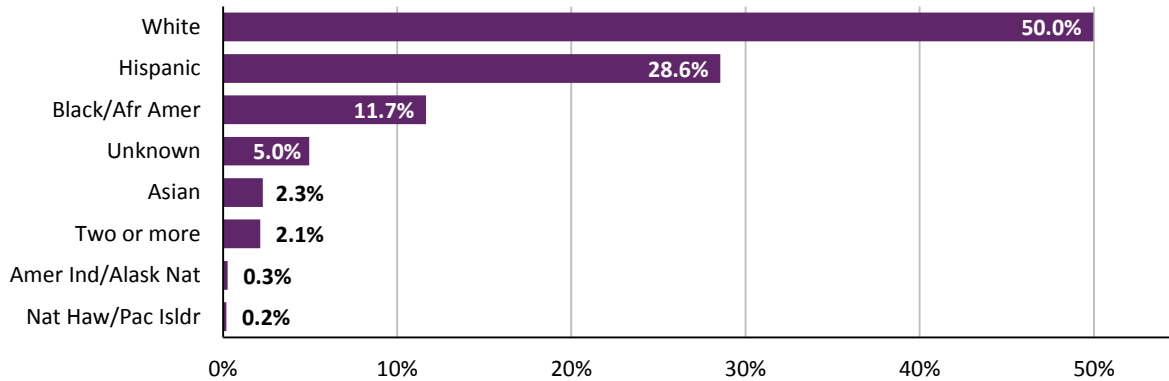
	Male	Female	Unknown	Total
24 and younger	2,453	3,353	17	5,823
25-34	531	781	6	1,318
35-54	207	499	4	710
55 and older	31	50	1	82
Total	3,222	4,683	28	7,933

Full-Time/Part-Time



■ Full-Time ■ Part-Time

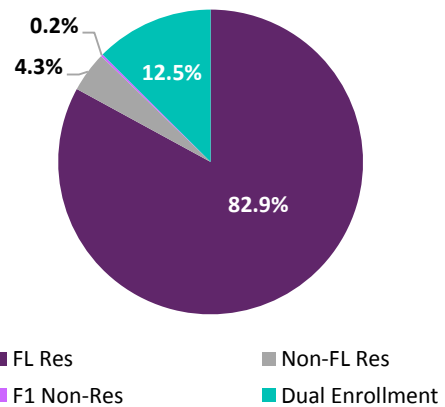
Race/Ethnicity



Top 5 Majors

	<u>n</u>
1. AA General Studies	5,046
2. AA Nursing Entry Focus	474
3. Non-Degree Seeking	449
4. AS Nursing Basic Prog	232
5. AS Business Admin/Mgmt	187

Residency



Top 5 Courses

	<u>n</u>
1. ENC 1101	1,907
2. SLS 1515	1,764
3. MAT 1033	991
4. PSY 2012	846
5. MAC 1105	784

*Students are assigned campus headcount based on where an individual student is taking the maximum number of credit hours. If credit hours are equal at multiple campuses, the student's headcount is assigned to the campus with the lowest headcount enrollment from the prior term. If credit hours are equal between a campus and FSW Online, the headcount is assigned to the physical campus.

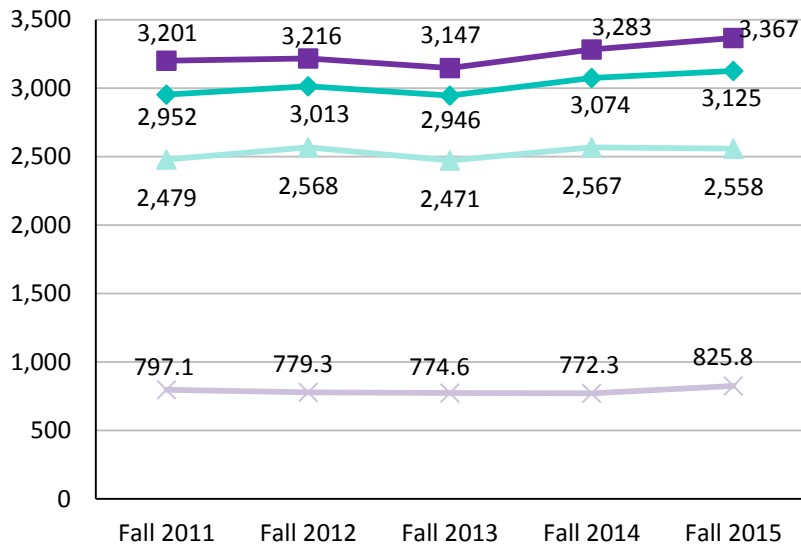
**Total student credit hour production by campus divided by 30

Source: Local Banner data

Fall 2015

Enrollment

	Fall 2011	Fall 2012	Fall 2013	Fall 2014	Fall 2015
Campus Headcount Enrollment*	2,952	3,013	2,946	3,074	3,125
Percentage of Total FSW State College Headcount	17.1%	18.8%	18.6%	19.6%	19.9%
Students Taking 1 or More Courses at the Campus	3,201	3,216	3,147	3,283	3,367
Students Taking Courses Exclusively at the Campus	2,479	2,568	2,471	2,567	2,558
Full-Time Equivalent (FTE) Enrollment**	797.1	779.3	774.6	772.3	825.8



Collier Campus Enrollment

- ◆ Campus Headcount Enrollment*
- Students Taking 1 or More Courses at the Campus
- ▲ Students Taking Courses Exclusively at the Campus
- × Full-Time Equivalent (FTE) Enrollment**

Courses & SCH Production

	Fall 2011	Fall 2012	Fall 2013	Fall 2014	Fall 2015
Number of Course Sections	343	355	357	368	353
Total Duplicated Enrollment in Course Sections	7,720	7,727	7,615	7,933	8,255
Mean Number of Students Per Section	22.5	21.8	21.3	21.6	23.4
Student Credit Hour Production	23,912	23,380	23,239	23,170	24,775

Fall 2015 Student Credit Hour Production by Level and Part of Term

	Lower	Upper	Total
Total Student Credit Hour Production	24,715	60	24,775
Full Term (I)	22,135	0	22,135
Mini-A	50	0	50
Mini-B	30	60	90
Special C	578	0	578
Dual Enrollment	1,922	0	1,922

*Students are assigned campus headcount based on where an individual student is taking the maximum number of credit hours. If credit hours are equal at multiple campuses, the student's headcount is assigned to the campus with the lowest headcount enrollment from the prior term. If credit hours are equal between a campus and FSW Online, the headcount is assigned to the physical campus.

**Total student credit hour production by campus divided by 30

Source: Local Banner data

Fall 2015

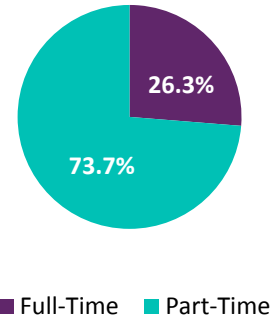
Total # of Students* 3,125

FTE Enrollment** 825.8

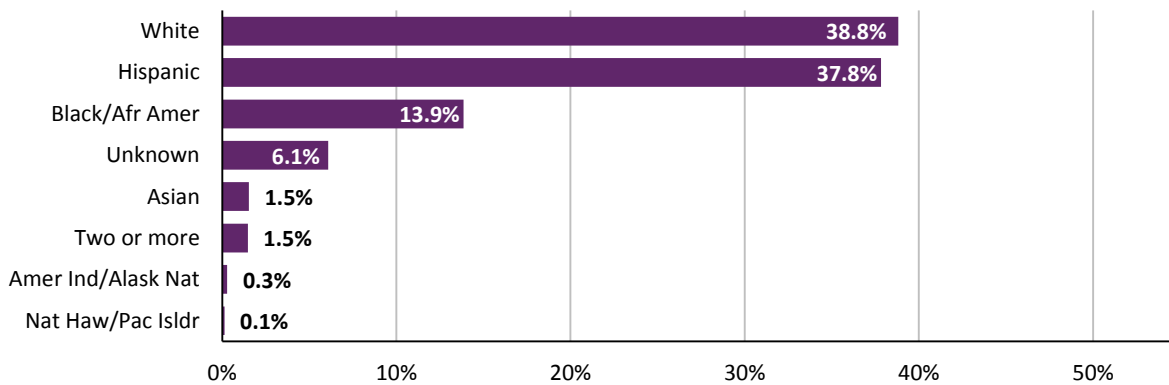
Gender by Age

	Male	Female	Unknown	Total
24 and younger	1,080	1,388	6	2,474
25-34	159	268	4	431
35-54	46	160	2	208
55 and older	4	8	0	12
Total	1,289	1,824	12	3,125

Full-Time/Part-Time



Race/Ethnicity



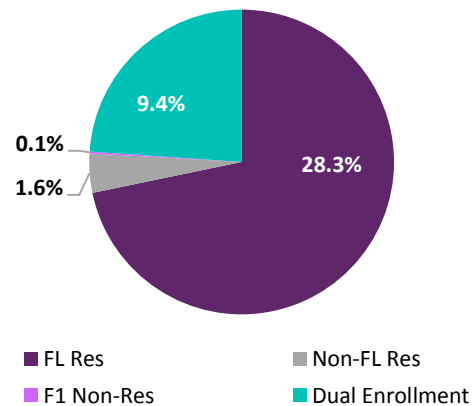
Top 5 Majors

Major	n
1. AA General Studies	2,154
2. AA Nursing Entry Focus	220
3. Non-Degree Seeking	154
4. Nursing Basic Program	143
5. AS Business Admin/Mgmt	90

Top 5 Courses

Course	n
1. ENC 1101	966
2. SLS 1515	681
3. MAT 1033	441
4. PSY 2012	355
5. MAC 1105	349

Residency



*Students are assigned campus headcount based on where an individual student is taking the maximum number of credit hours. If credit hours are equal at multiple campuses, the student's headcount is assigned to the campus with the lowest headcount enrollment from the prior term. If credit hours are equal between a campus and FSW Online, the headcount is assigned to the physical campus.

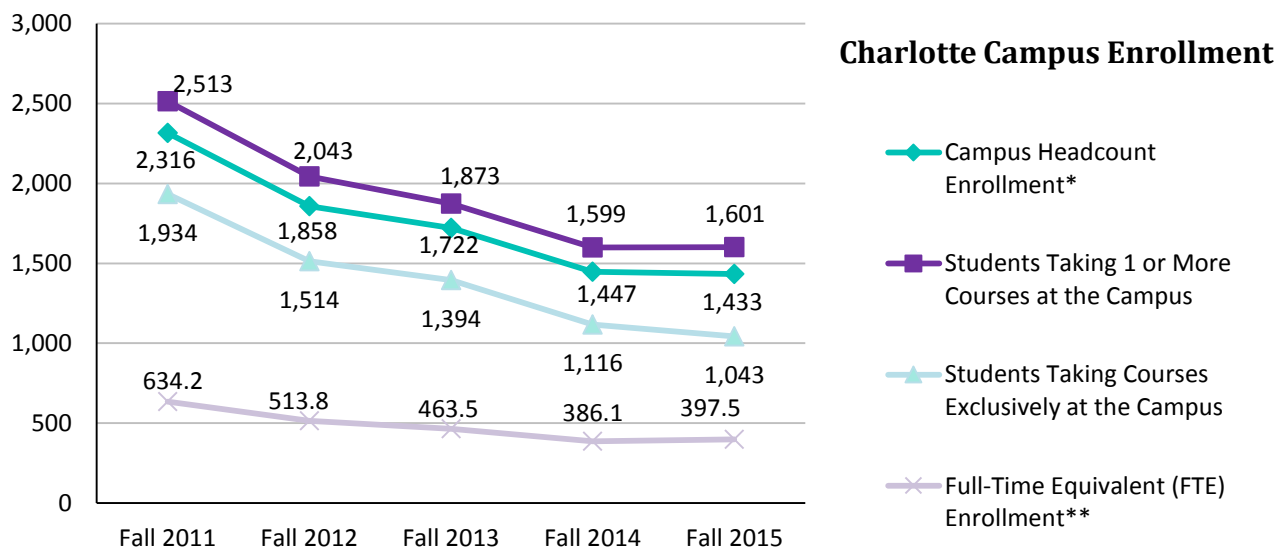
**Total student credit hour production by campus divided by 30

Source: Local Banner data

Fall 2015

Enrollment

	Fall 2011	Fall 2012	Fall 2013	Fall 2014	Fall 2015
Campus Headcount Enrollment*	2,316	1,858	1,722	1,447	1,433
Percentage of Total FSW State College Headcount	13.4%	11.6%	10.9%	9.2%	9.1%
Students Taking 1 or More Courses at the Campus	2,513	2,043	1,873	1,599	1,601
Students Taking Courses Exclusively at the Campus	1,934	1,514	1,394	1,116	1,043
Full-Time Equivalent (FTE) Enrollment**	634.2	513.8	463.5	386.1	397.5



Courses & SCH Production

	Fall 2011	Fall 2012	Fall 2013	Fall 2014	Fall 2015
Number of Course Sections	276	246	238	193	186
Total Duplicated Enrollment in Course Sections	6,249	5,191	4,662	4,020	4,120
Mean Number of Students Per Section	22.6	21.1	19.6	20.8	22.2
Student Credit Hour Production	19,025	15,413	13,905	11,583	11,926

Fall 2015 Student Credit Hour Production by Level and Part of Term

	Lower	Upper	Total
Total Student Credit Hour Production	11,926	0	11,926
Full Term (I)	10,408	0	10,408
Mini-A	60	0	60
Mini-B	60	0	60
Special C	0	0	0
Dual Enrollment	1,398	0	1,398

*Students are assigned campus headcount based on where an individual student is taking the maximum number of credit hours. If credit hours are equal at multiple campuses, the student's headcount is assigned to the campus with the lowest headcount enrollment from the prior term. If credit hours are equal between a campus and FSW Online, the headcount is assigned to the physical campus.

**Total student credit hour production by campus divided by 30

Source: Local Banner data

Fall 2015

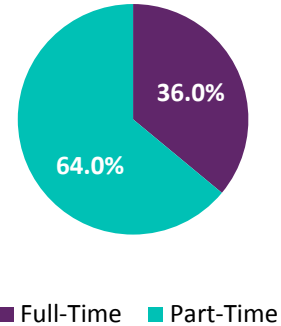
Total # of Students* 1,433

FTE Enrollment** 397.5

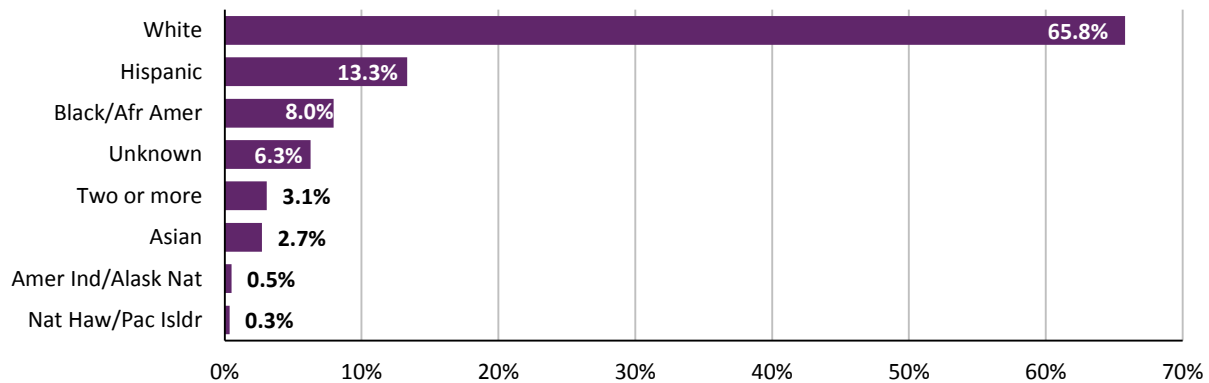
Gender by Age

	Male	Female	Unknown	Total
24 and younger	452	646	1	1,099
25-34	61	125	0	186
35-54	43	95	0	138
55 and older	5	5	0	10
Total	561	871	1	1,433

Full-Time/Part-Time



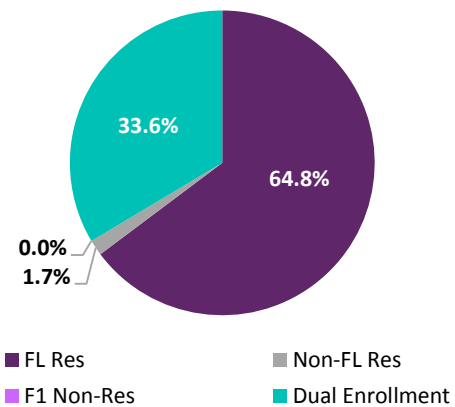
Race/Ethnicity



Top 5 Majors

Major	n
1. AA General Studies	980
2. AA Nursing Entry Focus	104
3. AS Nursing Basic Program	72
4. Non-Degree Seeking	49
5. AS Business Admin/Mgmt	35

Residency



Top 5 Courses

Course	n
1. ENC 1101	444
2. BSC 1010	262
3. SLS 1515	241
4. BSC 1010L	237
5. MAT 1033	211

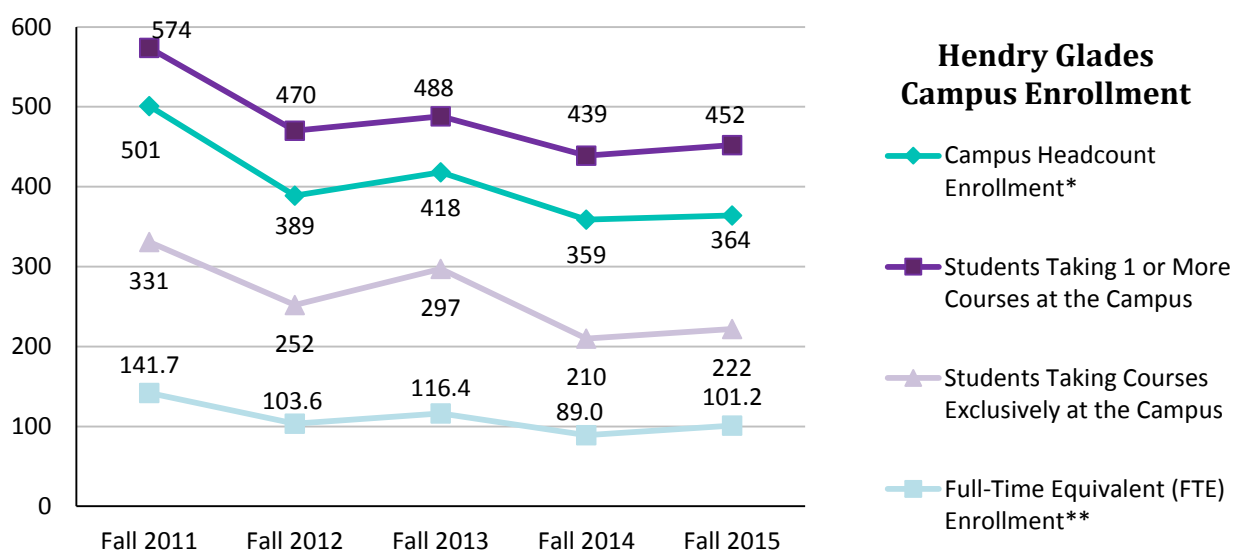
*Students are assigned campus headcount based on where an individual student is taking the maximum number of credit hours. If credit hours are equal at multiple campuses, the student's headcount is assigned to the campus with the lowest headcount enrollment from the prior term. If credit hours are equal between a campus and FSW Online, the headcount is assigned to the physical campus.

**Total student credit hour production by campus divided by 30

Fall 2015

Enrollment

	Fall 2011	Fall 2012	Fall 2013	Fall 2014	Fall 2015
Center Headcount Enrollment*	501	389	418	359	364
Percentage of Total FSW State College Headcount	2.9%	2.4%	2.6%	2.3%	2.3%
Students Taking 1 or More Courses at the Center	574	470	488	439	452
Students Taking Courses Exclusively at the Center	331	252	297	210	222
Full-Time Equivalent (FTE) Enrollment**	141.7	103.6	116.4	89.0	101.2



Courses & SCH Production

	Fall 2011	Fall 2012	Fall 2013	Fall 2014	Fall 2015
Number of Course Sections	62	60	63	53	52
Total Duplicated Enrollment in Course Sections	1,319	995	1,107	901	974
Mean Number of Students Per Section	21.3	16.6	17.6	17.1	18.7
Student Credit Hour Production	4,251	3,108	3,491	2,669	3,036

Fall 2015 Student Credit Hour Production by Level and Part of Term

	Lower	Upper	Total
Total Student Credit Hour Production	3,036	0	3,036
Full Term (I)	2,880	0	2,880
Mini-A	0	0	0
Mini-B	12	0	12
Special C	0	0	0
Dual Enrollment	144	0	144

*Students are assigned campus headcount based on where an individual student is taking the maximum number of credit hours. If credit hours are equal at multiple campuses, the student's headcount is assigned to the campus with the lowest headcount enrollment from the prior term. If credit hours are equal between a campus and FSW Online, the headcount is assigned to the physical campus.

**Total student credit hour production by campus divided by 30

Source: Local Banner data

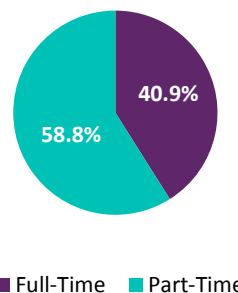
Fall 2015

Total # of Students* 364
FTE Enrollment** 101.2

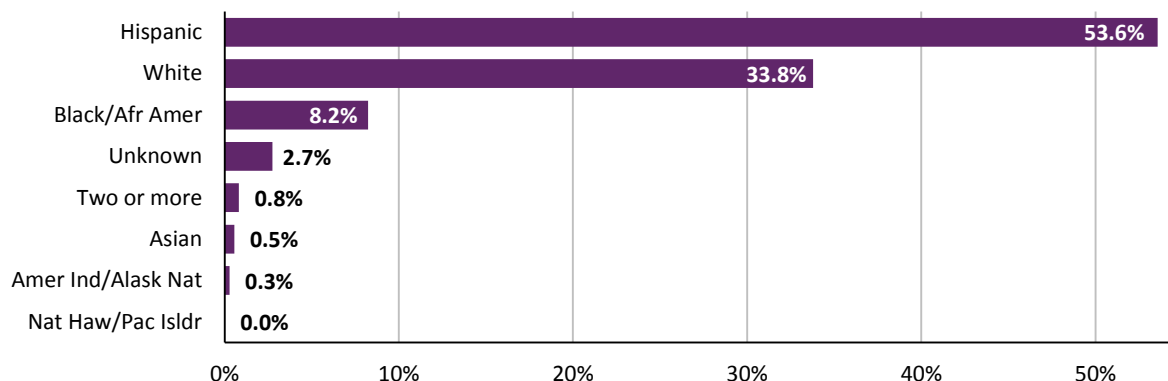
Gender by Age

	Male	Female	Unknown	Total
24 and younger	96	198	3	297
25-34	7	38	0	45
35-54	6	14	1	21
55 and older	0	1	0	1
Total	109	251	4	364

Full-Time/Part-Time



Race/Ethnicity



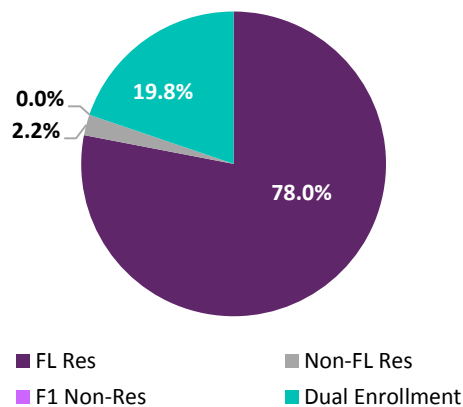
Top 5 Majors

Major	n
1. AA General Studies	252
2. AA Nursing Entry Focus	34
3. AS Business Admin/Mgmt	15
4. AS Criminal Justice Tech	13
5. Non-Degree Seeking	13

Top 5 Courses

Course	n
1. ENC 1101	138
2. SLS 1515	129
3. MAT 1033	93
4. BSC 1010	55
5. BSC 1010L	48

Residency



*Students are assigned campus headcount based on where an individual student is taking the maximum number of credit hours. If credit hours are equal at multiple campuses, the student's headcount is assigned to the campus with the lowest headcount enrollment from the prior term. If credit hours are equal between a campus and FSW Online, the headcount is assigned to the physical campus.

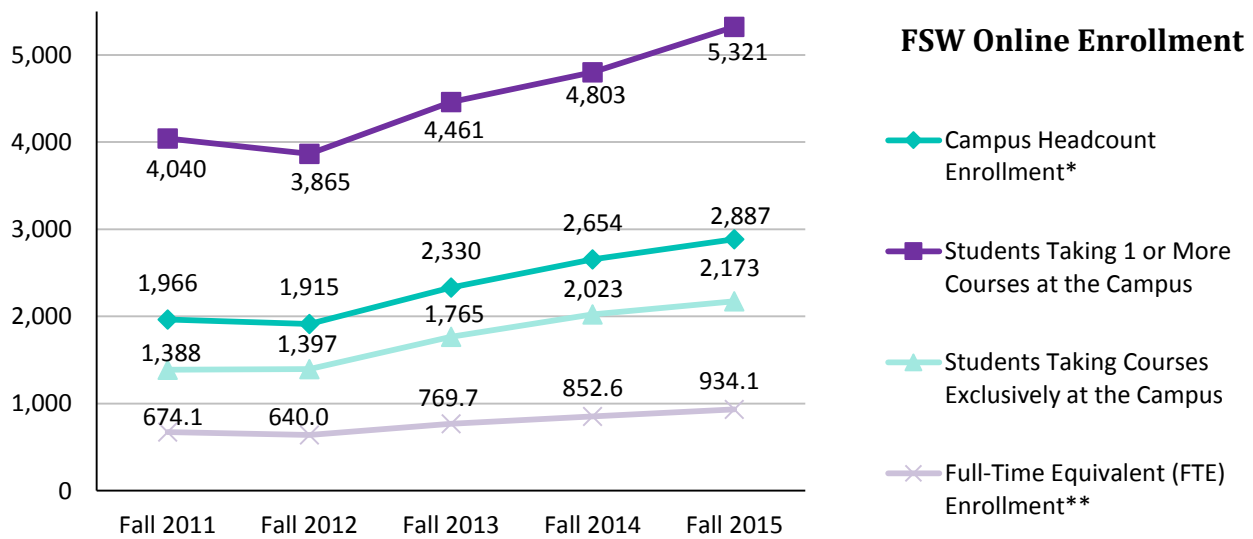
**Total student credit hour production by campus divided by 30

Source: Local Banner data

Fall 2015

Enrollment

	Fall 2011	Fall 2012	Fall 2013	Fall 2014	Fall 2015
Campus Headcount Enrollment*	1,966	1,915	2,330	2,654	2,887
Percentage of Total FSW State College Headcount	11.4%	11.9%	14.7%	16.9%	18.3%
Students Taking 1 or More Courses at the Campus	4,040	3,865	4,461	4,803	5,321
Students Taking Courses Exclusively at the Campus	1,388	1,397	1,765	2,023	2,173
Full-Time Equivalent (FTE) Enrollment**	674.1	640.0	769.7	852.6	934.1



Courses & SCH Production

	Fall 2011	Fall 2012	Fall 2013	Fall 2014	Fall 2015
Number of Course Sections	309	285	337	360	404
Total Duplicated Enrollment in Course Sections	6,877	6,549	7,838	8,701	9,414
Mean Number of Students Per Section	22.3	23.0	23.3	24.1	23.3
Student Credit Hour Production	20,224	19,201	23,091	25,578	28,024

Fall 2015 Student Credit Hour Production by Level and Part of Term

	Lower	Upper	Total
Total Student Credit Hour Production	24,101	3,923	28,024
Full Term (I)	22,418	858	23,276
Mini-A	537	1,693	2,230
Mini-B	993	1,372	2,365
Special C	153	0	153
Dual Enrollment	0	0	0

*Students are assigned campus headcount based on where an individual student is taking the maximum number of credit hours. If credit hours are equal at multiple campuses, the student's headcount is assigned to the campus with the lowest headcount enrollment from the prior term. If credit hours are equal between a campus and FSW Online, the headcount is assigned to the physical campus.

**Total student credit hour production by campus divided by 30

Source: Local Banner data

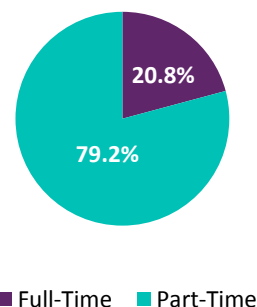
Fall 2015

Total # of Students* 2,887
FTE Enrollment** 934.1

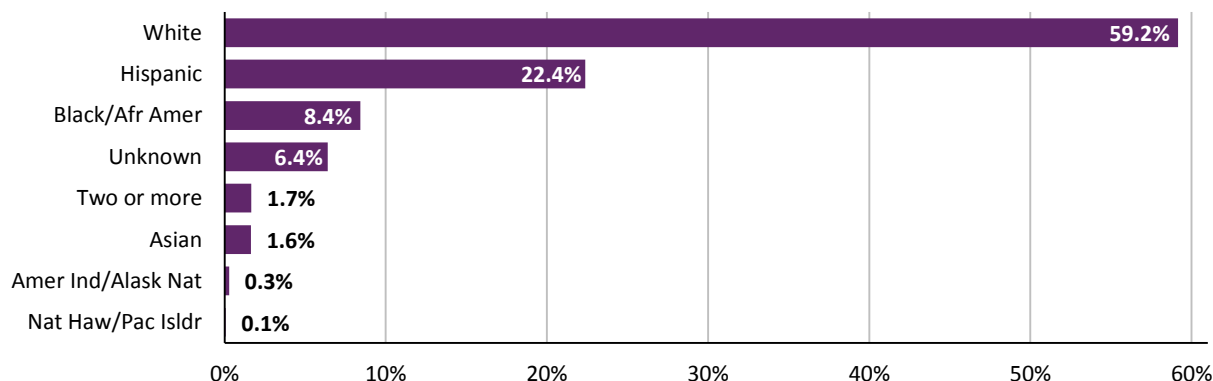
Gender by Age

	Male	Female	Unknown	Total
24 and younger	510	978	3	1,491
25-34	248	528	2	778
35-54	158	415	2	575
55 and older	12	31	0	43
Total	928	1,952	7	2,887

Full-Time/Part-Time



Race/Ethnicity



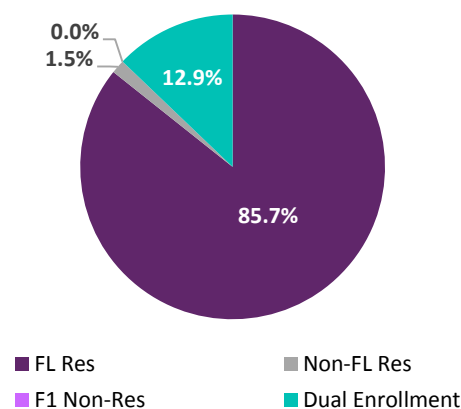
Top 5 Majors

	<u>n</u>
1. AA General Studies	1,531
2. BAS Supervision & Mgmt	289
3. BS Nursing	201
4. Non-Degree Seeking	192
5. AS Business Admin/Mgmt	113

Top 5 Courses

	<u>n</u>
1. ENC 1101	339
2. WOH 1030	293
3. ENC 1102	290
4. MAT 1033	289
5. PSY 2012	263

Residency



*Students are assigned campus headcount based on where an individual student is taking the maximum number of credit hours. If credit hours are equal at multiple campuses, the student's headcount is assigned to the campus with the lowest headcount enrollment from the prior term. If credit hours are equal between a campus and FSW Online, the headcount is assigned to the physical campus.

**Total student credit hour production by campus divided by 30

Source: Local Banner data

Fall 2015 Students on Lee Campus by Time



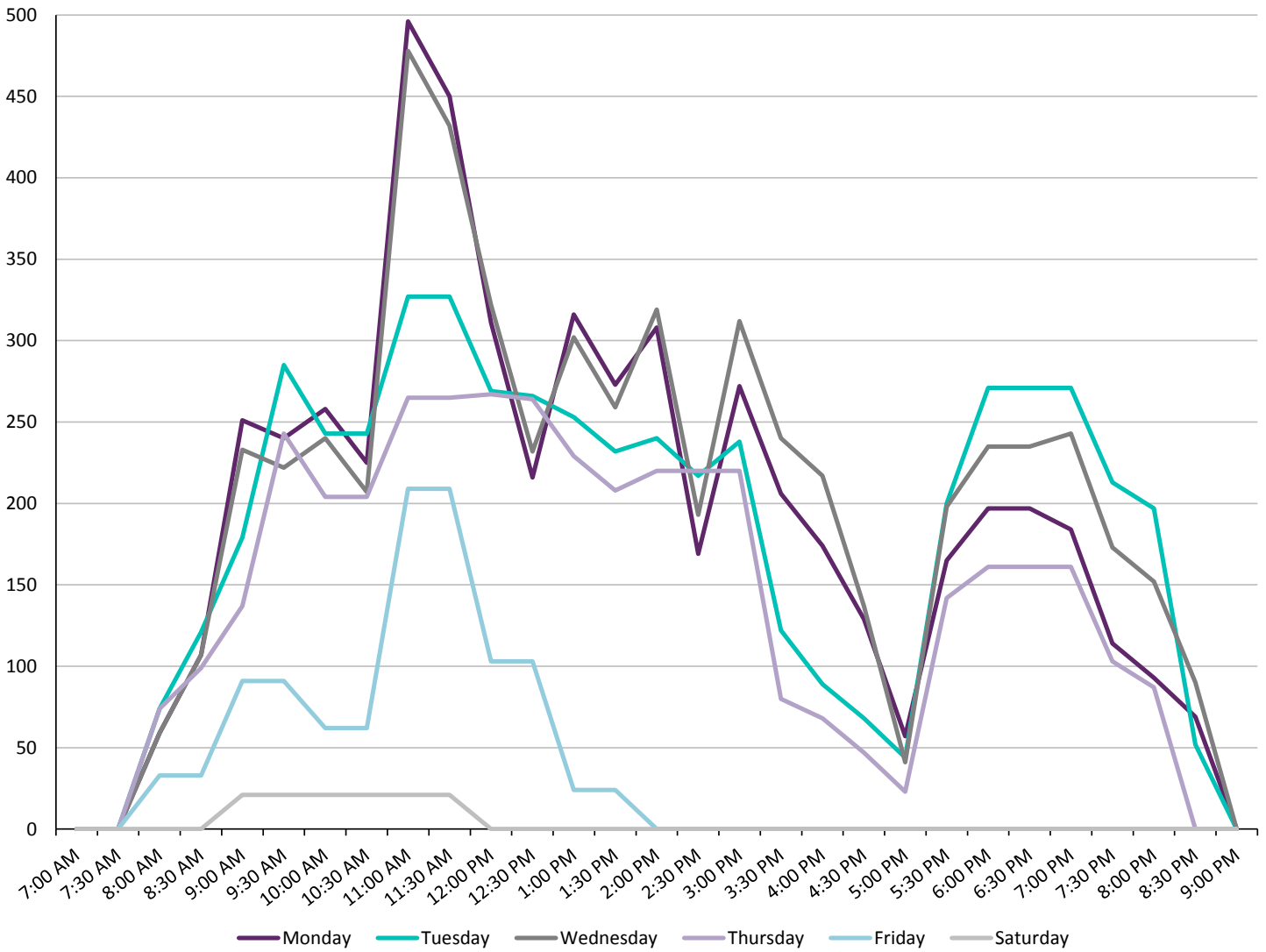
Source: Local Banner data

Fall 2015 Students on Collier Campus by Time



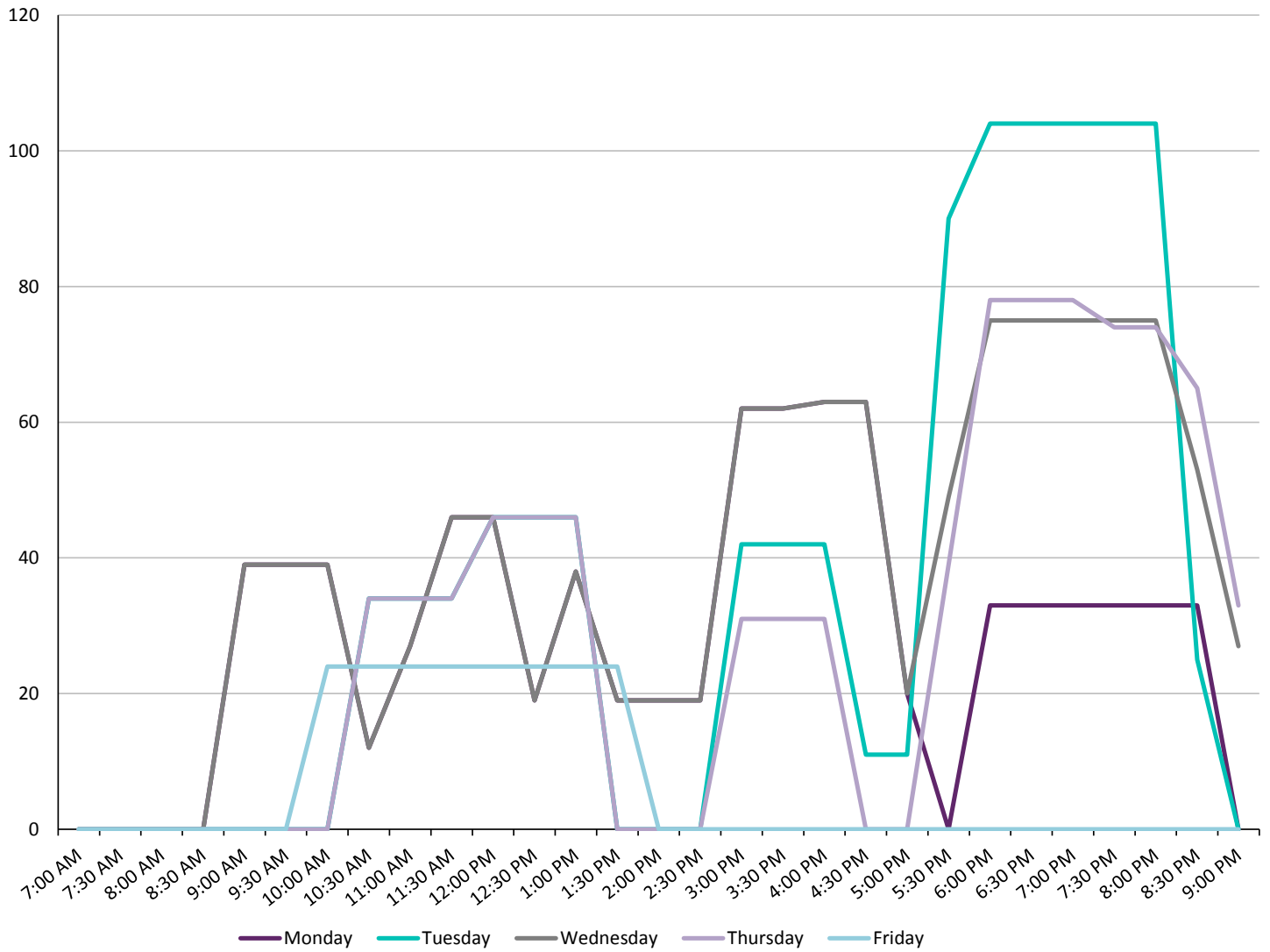
Source: Local Banner data

Fall 2015 Students on Charlotte Campus by Time



Source: Local Banner data

Fall 2015 Students on Hendry Glades Center by Time

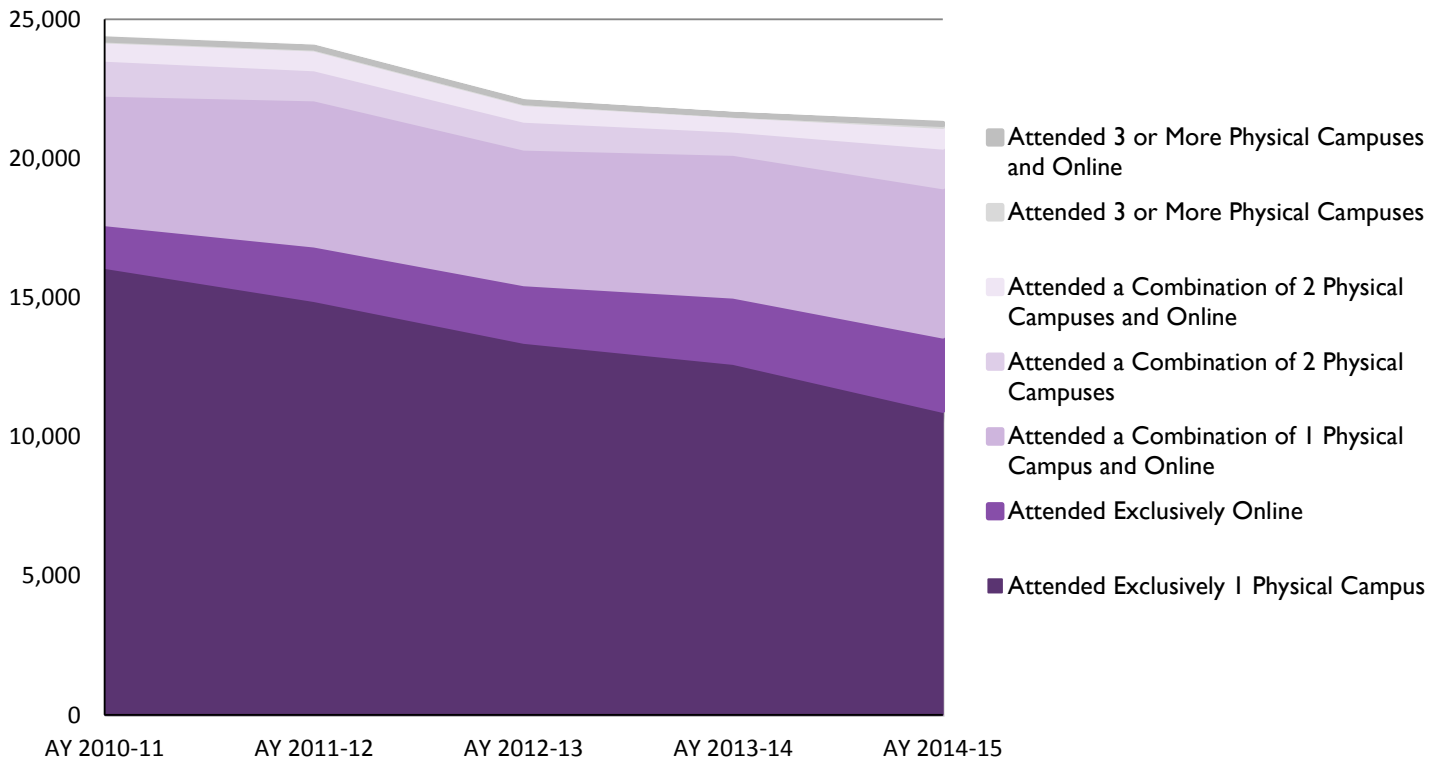


Source: Local Banner data

Academic Year Enrollment by Attendance

	AY 2010-11	AY 2011-12	AY 2012-13	AY 2013-14	AY 2014-15
Unduplicated Enrollment	24,290	23,993	22,029	21,573	21,251
Attended Exclusively 1 Physical Campus	16,123	14,931	13,429	12,678	10,952
Attended Exclusively Online	1,536	1,957	2,072	2,381	2,669
Attended a Combination of 1 Physical Campus and Online	4,656	5,257	4,868	5,130	5,357
Attended a Combination of 2 Physical Campuses	1,257	1,077	1,011	829	1,424
Attended a Combination of 2 Physical Campuses and Online	652	714	593	527	749
Attended 3 or More Physical Campuses	34	32	33	18	67
Attended 3 or More Physical Campuses and Online	32	25	24	10	33

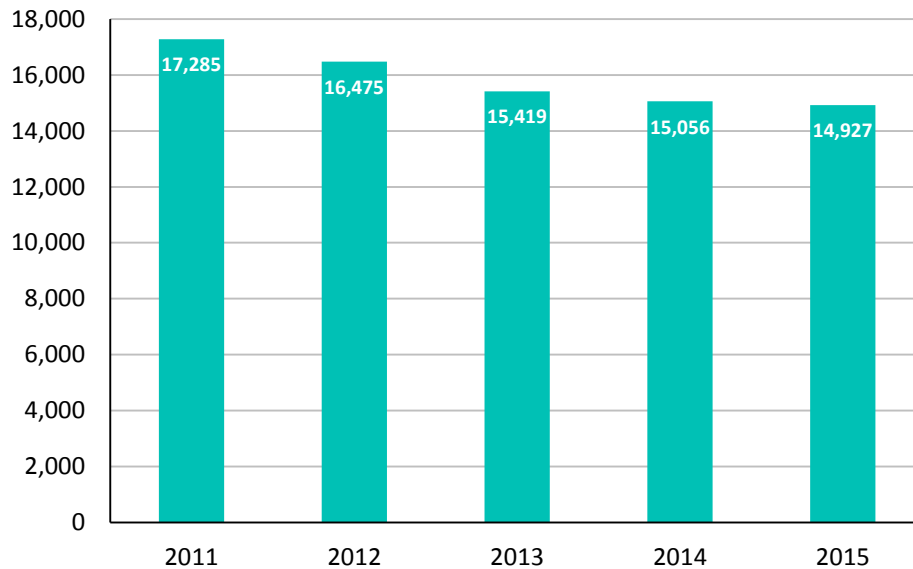
	AY 2010-11	AY 2011-12	AY 2012-13	AY 2013-14	AY 2014-15
Attended Exclusively 1 Physical Campus	66.4%	62.2%	61.0%	58.8%	51.5%
Attended Exclusively Online	6.3%	8.2%	9.4%	11.0%	12.6%
Attended a Combination of 1 Physical Campus and Online	19.2%	21.9%	22.1%	23.8%	25.2%
Attended a Combination of 2 Physical Campuses	5.2%	4.5%	4.6%	3.8%	6.7%
Attended a Combination of 2 Physical Campuses and Online	2.7%	3.0%	2.7%	2.4%	3.5%
Attended 3 or More Physical Campuses	0.1%	0.1%	0.1%	0.1%	0.3%
Attended 3 or More Physical Campuses and Online	0.1%	0.1%	0.1%	0.0%	0.2%



Source: Local Banner data

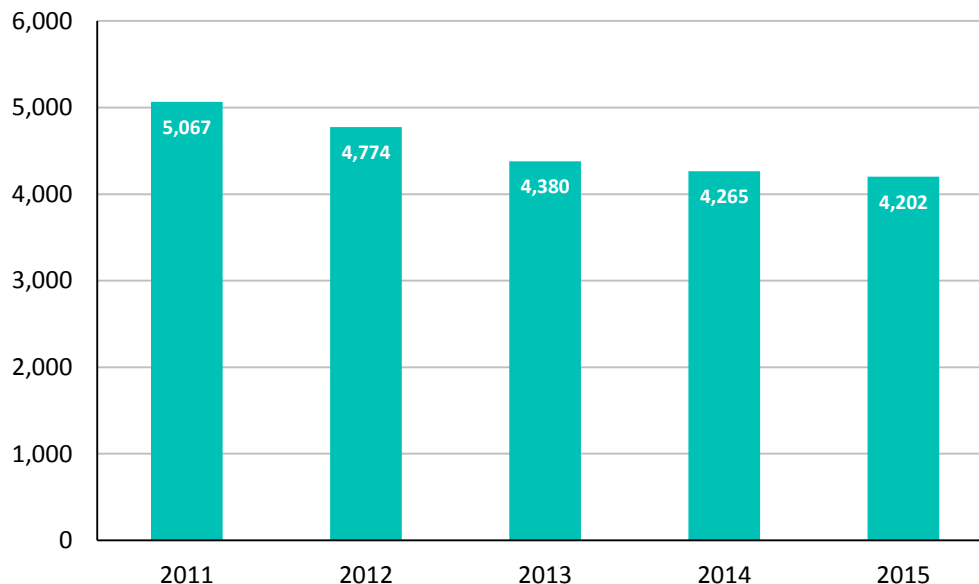
Spring Headcount Enrollment

	Spring 2011	Spring 2012	Spring 2013	Spring 2014	Spring 2015	5-Year % Change
Headcount	17,285	16,475	15,419	15,056	14,927	-13.6%



Spring FTE* Enrollment

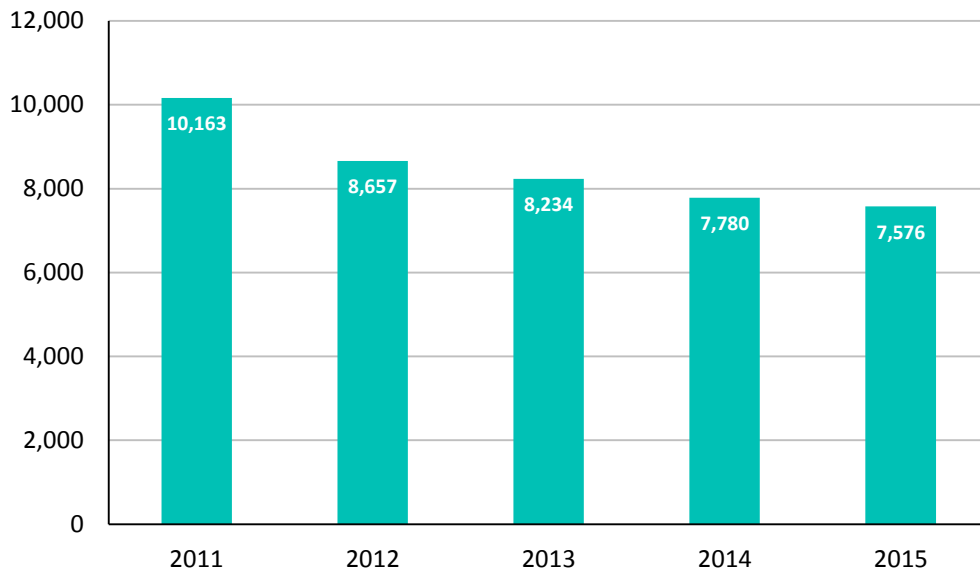
	Spring 2011	Spring 2012	Spring 2013	Spring 2014	Spring 2015	5-Year % Change
Total FTE	5,067	4,774	4,380	4,265	4,202	-17.1%



*Total student credit hour production divided by 30
Source: Local Banner data

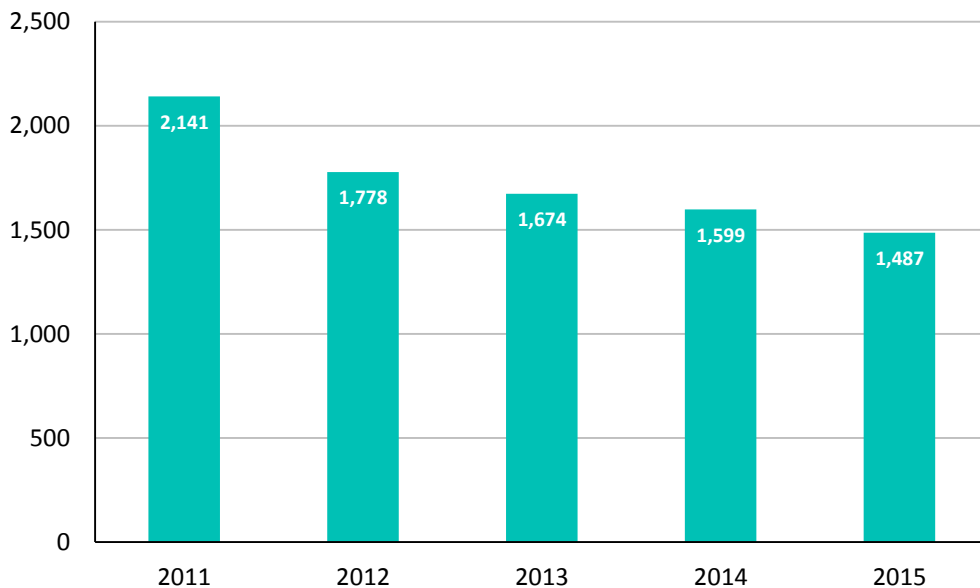
Summer Headcount Enrollment

	Summer 2011	Summer 2012	Summer 2013	Summer 2014	Summer 2015	5-Year % Change
Headcount	10,163	8,657	8,234	7,780	7,576	-25.5%



Summer FTE* Enrollment

	Summer 2011	Summer 2012	Summer 2013	Summer 2014	Summer 2015	5-Year % Change
Total FTE	2,141	1,778	1,674	1,599	1,487	-30.5%

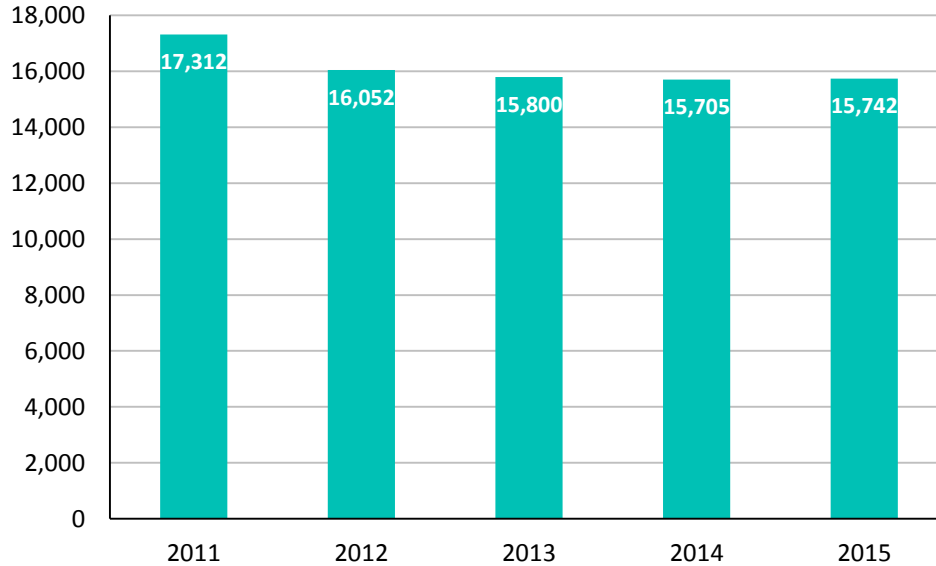


*Total student credit hour production divided by 30

Source: Local Banner data

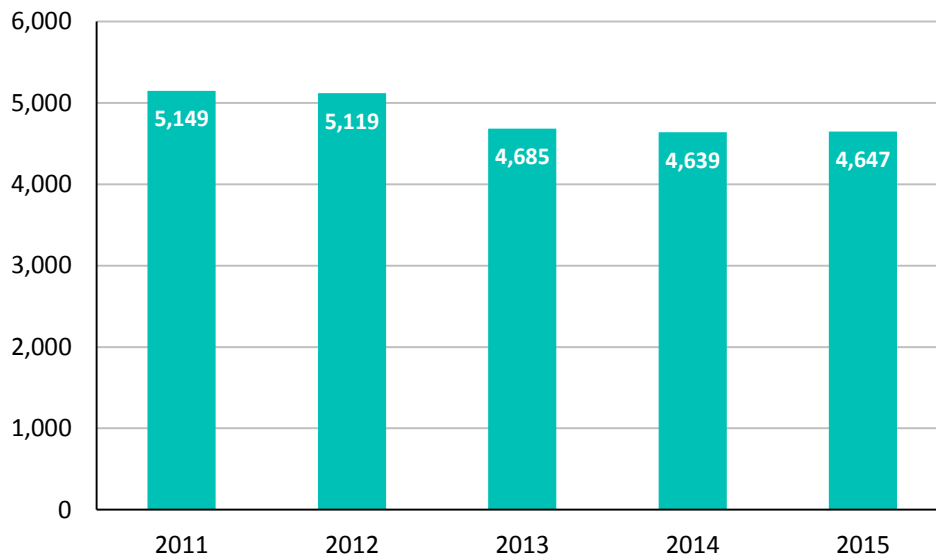
Fall Headcount Enrollment

	Fall 2011	Fall 2012	Fall 2013	Fall 2014	Fall 2015	5-Year % Change
Headcount	17,312	16,052	15,800	15,705	15,742	-10.0%



Fall FTE* Enrollment

	Fall 2011	Fall 2012	Fall 2013	Fall 2014	Fall 2015	5-Year % Change
Total FTE	5,149	5,119	4,685	4,639	4,647	-9.7%



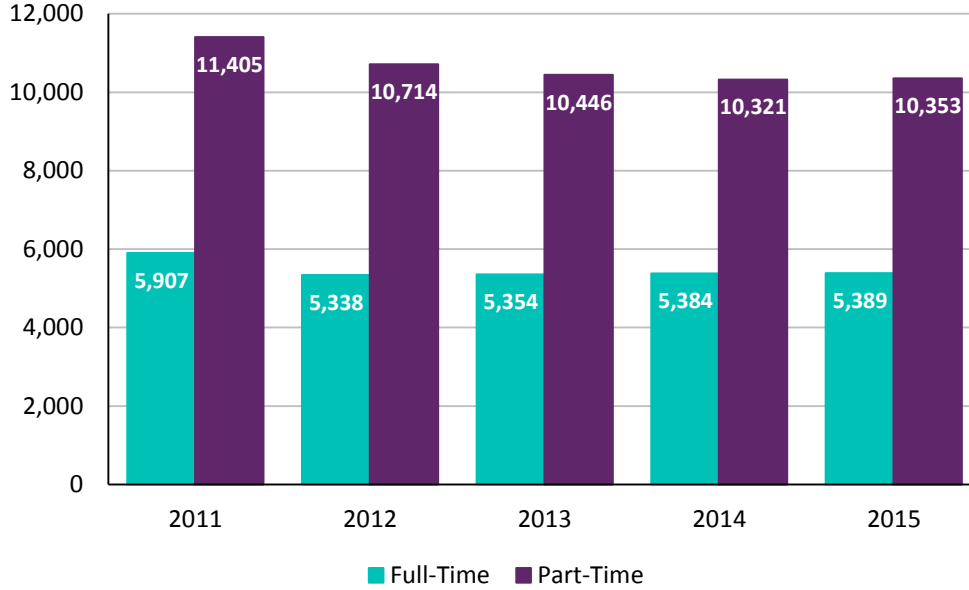
*Total student credit hour production divided by 30

Source: Local Banner data

Fall Enrollment by Full-Time/Part-Time & Fall Average Credit Hours Enrolled

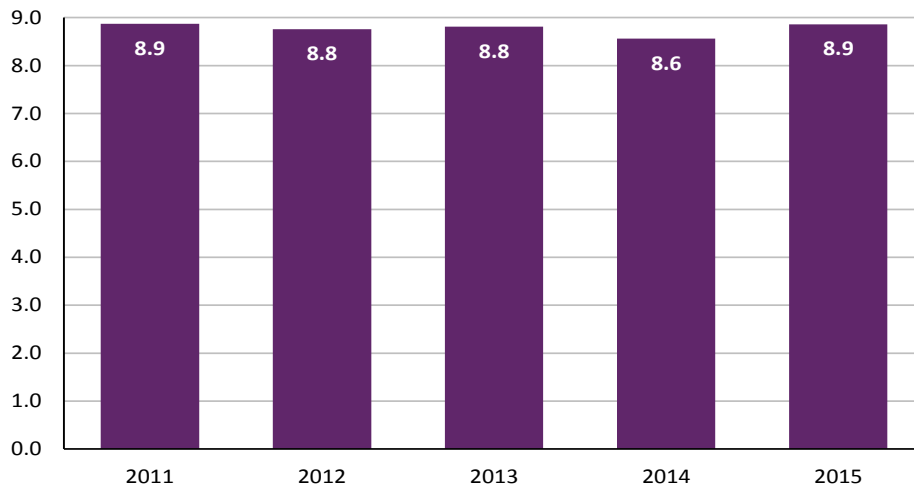
Fall Enrollment by Full-Time/Part-Time

	Fall 2011	Fall 2012	Fall 2013	Fall 2014	Fall 2015	5-Year % Change
Full-Time	5,907	5,338	5,354	5,384	5,389	-8.8%
Part-Time	11,405	10,714	10,446	10,321	10,353	-9.2%
Total	17,312	16,052	15,800	15,705	15,742	-9.1%



Fall Average Credit Hours Enrolled

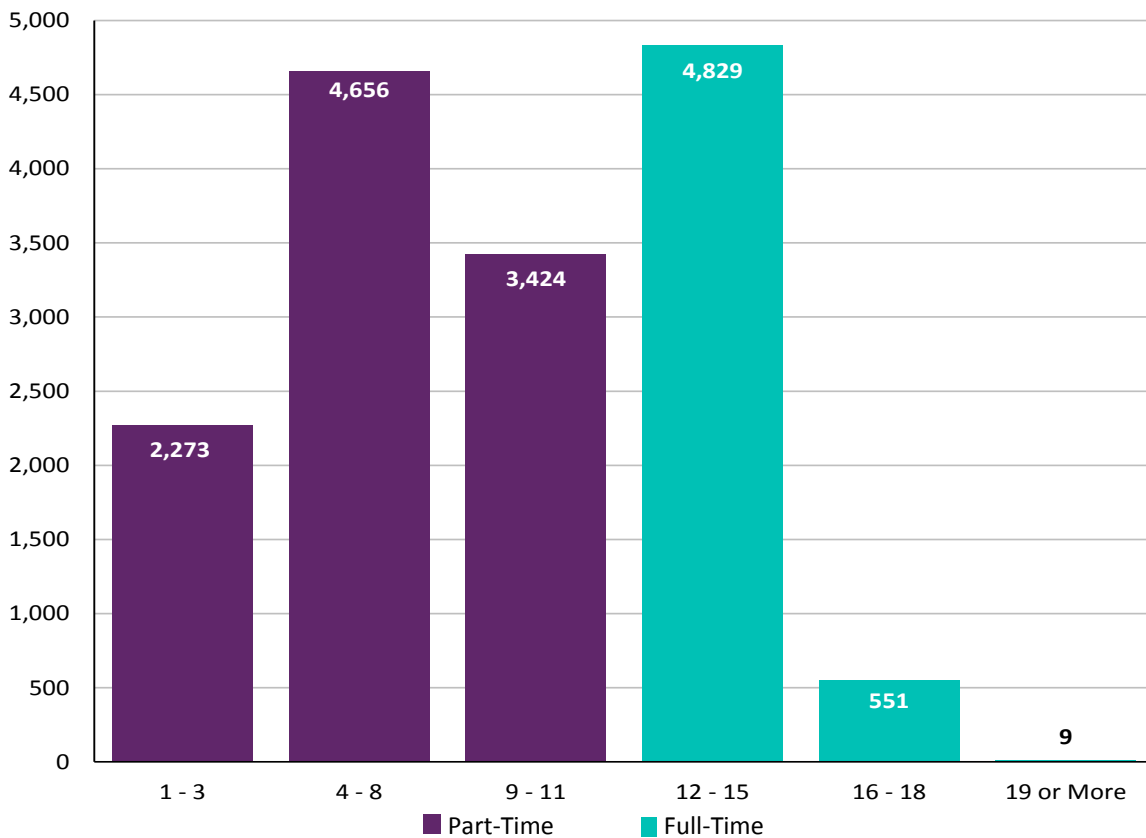
	Fall 2011	Fall 2012	Fall 2013	Fall 2014	Fall 2015	5-Year % Change
Average Credit Hours Enrolled	8.9	8.8	8.8	8.6	8.9	-0.1%



Source: Local Banner data

Fall 2015 Full-Time and Part-Time Enrollment by Credit Hours Enrolled

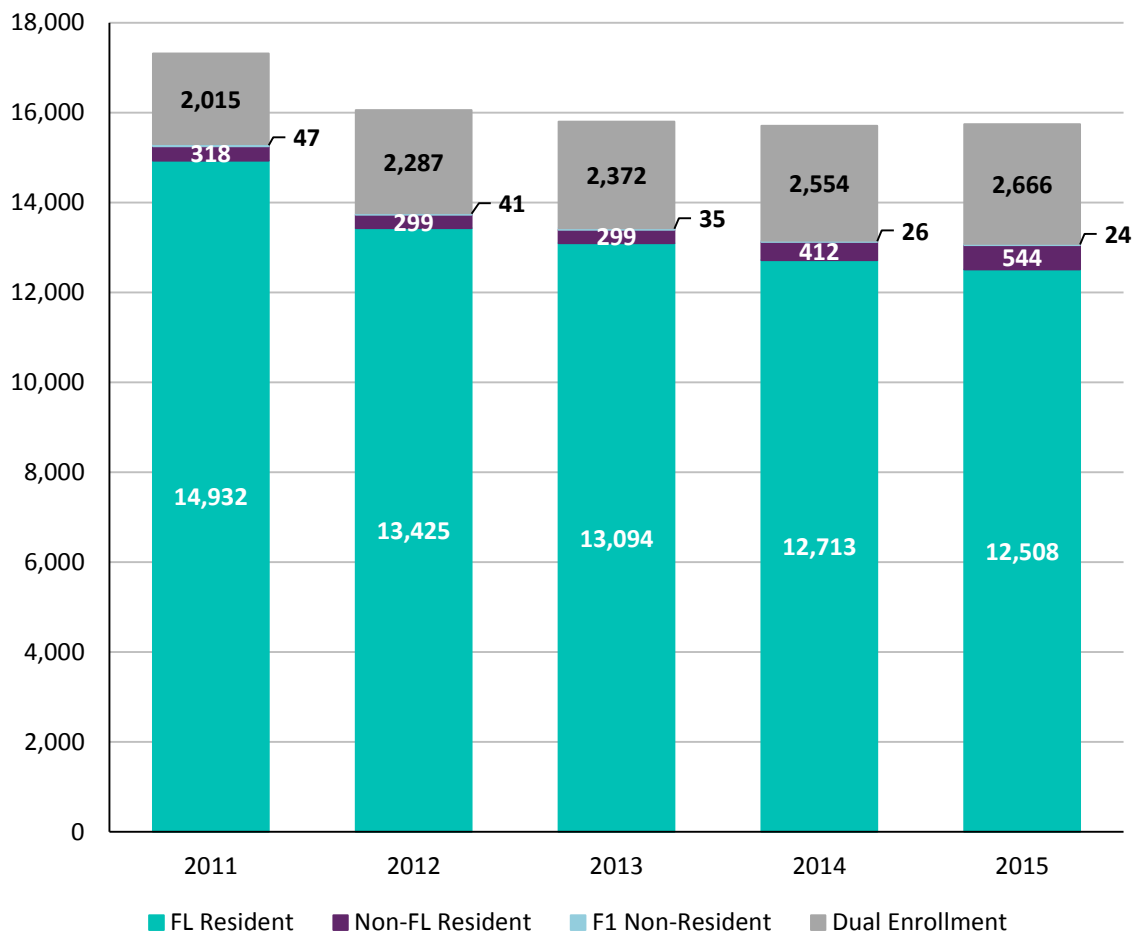
Part-Time			Full-Time		
Credit Hours	n	%	Credit Hours	n	%
1	25	0.2%	12	1,930	12.3%
2	5	0.0%	13	1,986	12.6%
3	2,243	14.2%	14	600	3.8%
4	713	4.5%	15	313	2.0%
5	51	0.3%	16	388	2.5%
6	2,357	15.0%	17	117	0.7%
7	1,199	7.6%	18	46	0.3%
8	336	2.1%	19	5	0.0%
9	1,551	9.9%	20	3	0.0%
10	1,506	9.6%	21	1	0.0%
11	367	2.3%			
Total Enrolled Part-Time	10,353	65.8%	Total Enrolled Full-Time	5,389	34.2%
Total Credit Hours Part-Time		68,150	Total Credit Hours Full-Time		71,274
Average Credit Hours Part-Time		6.58	Average Credit Hours Full-Time		13.23



Source: Local Banner data

Fall Enrollment by Residency Status

	Fall 2011	Fall 2012	Fall 2013	Fall 2014	Fall 2015	5-Year % Change
FL Resident	14,932	13,425	13,094	12,713	12,508	-16.2%
Non-FL Resident	318	299	299	412	544	71.1%
F1 Non-Resident*	47	41	35	26	24	-48.9%
Dual Enrollment	2,015	2,287	2,372	2,554	2,666	32.3%
Total	17,312	16,052	15,800	15,705	15,742	-9.1%

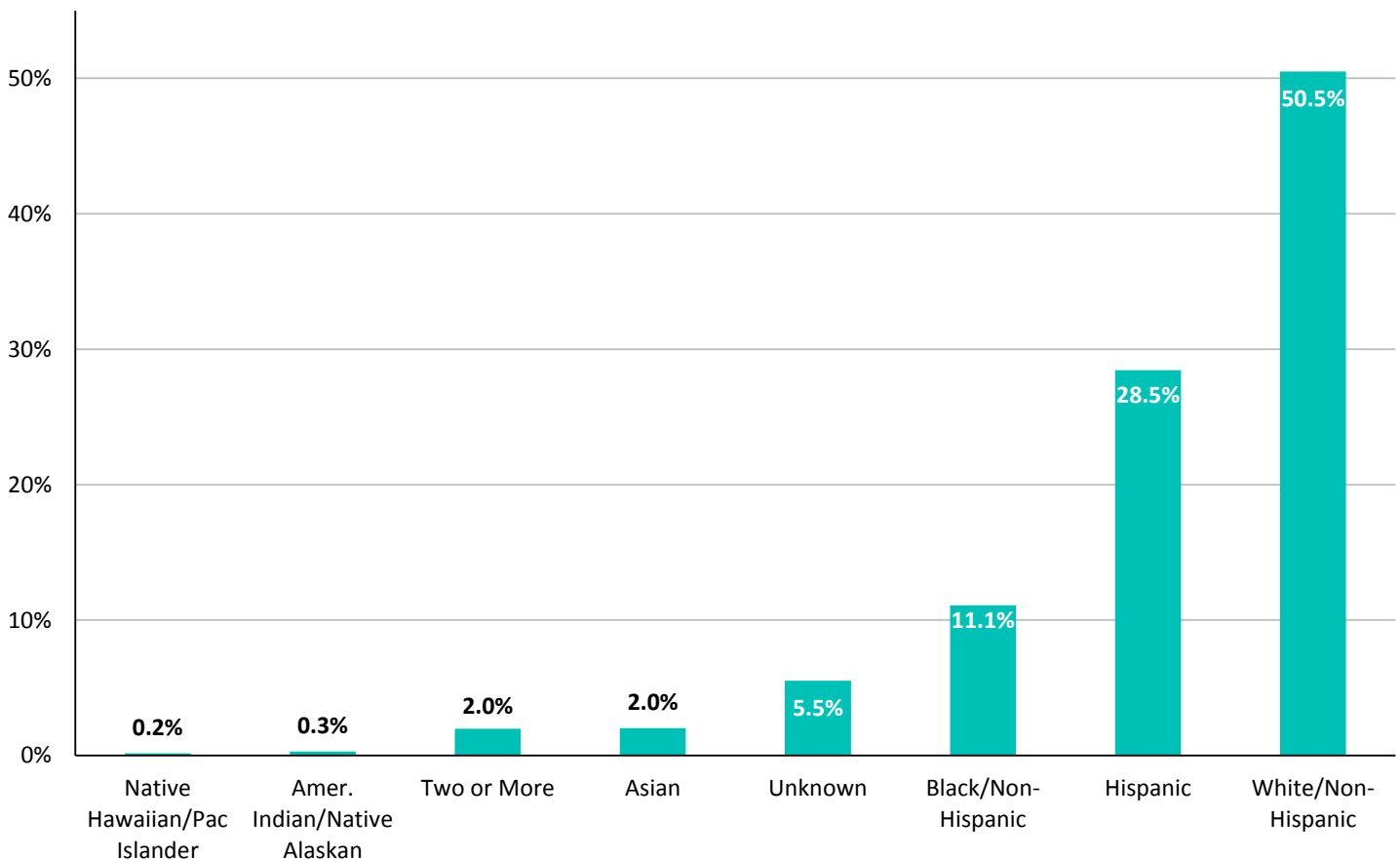


*F1 Non-Resident: An F1 visa is issued to international students who are attending an academic program or English Language Program at a US college or university.

Source: Local Banner data

	Fall 2011	Fall 2012	Fall 2013	Fall 2014	Fall 2015	5-Year % Change
Amer. Indian/Native Alaskan	46	44	53	51	46	0.0%
Asian	322	325	314	293	317	-1.6%
Black/Non-Hispanic	1,898	1,756	1,839	1,803	1,745	-8.1%
Native Hawaiian/Pac Islander	31	34	36	27	26	-16.1%
Hispanic	3,854	3,683	3,970	4,276	4,479	16.2%
Two or More	113	143	206	278	310	174.3%
White/Non-Hispanic	10,305	9,309	8,661	8,236	7,951	-22.8%
Unknown	743	758	721	741	868	16.8%

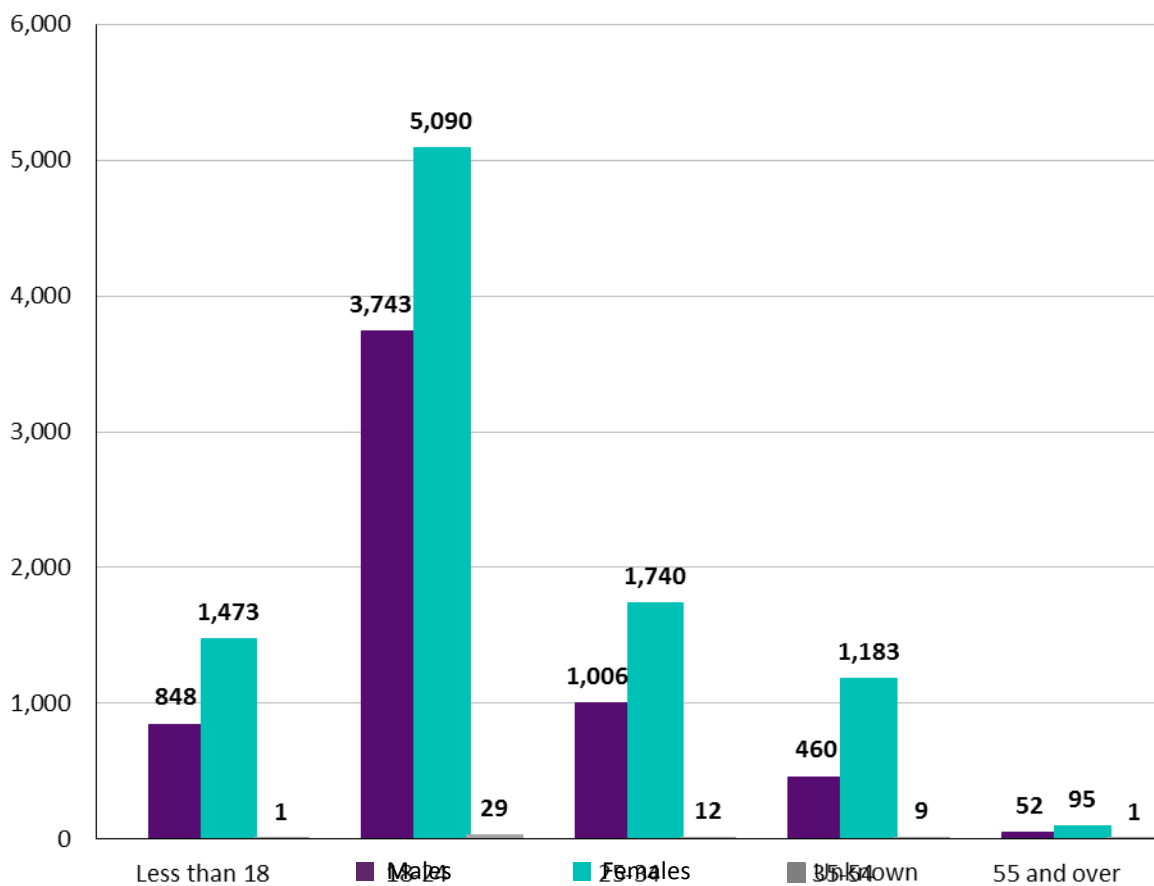
Fall 2015



Source: Local Banner data

Fall 2015

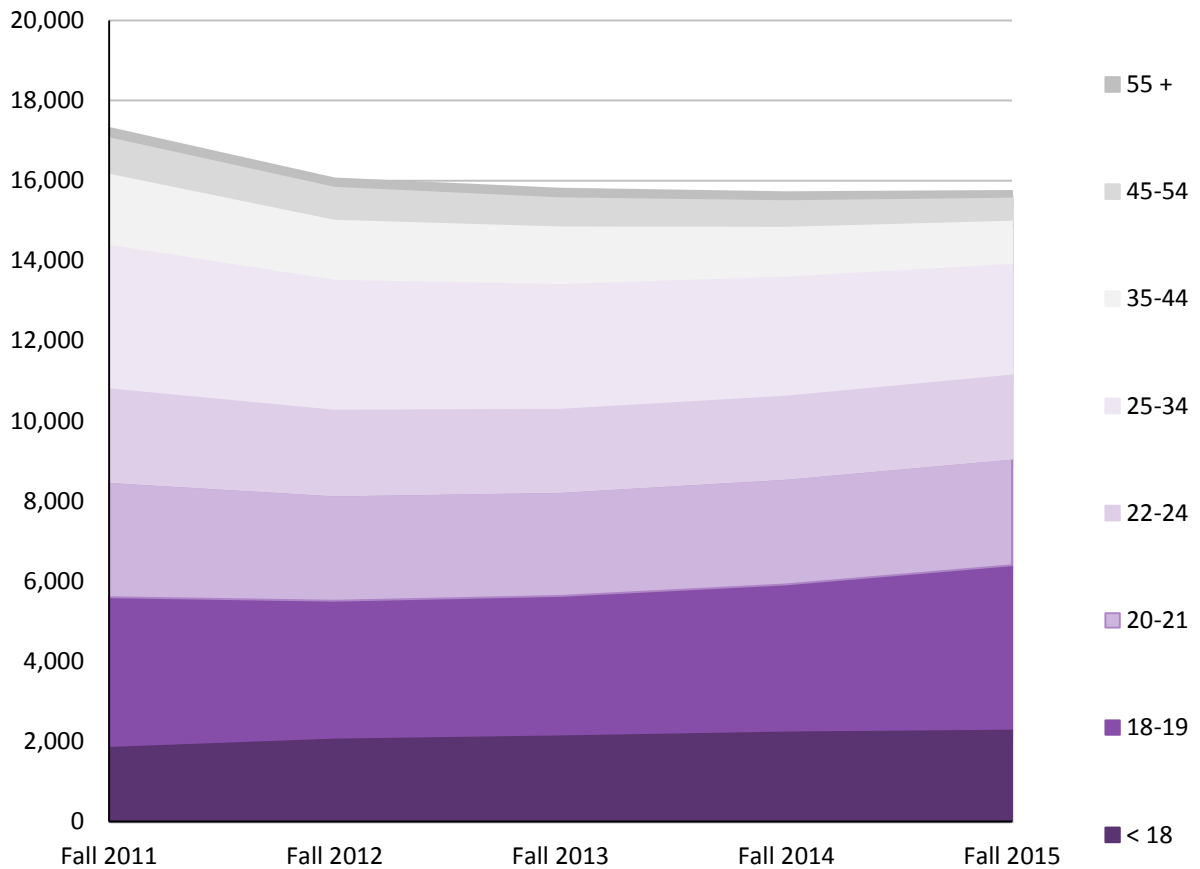
Age	Males		Females		Unknown		Total	
	#	% of Total	#	% of Total	#	% of Total	#	% of Total
< 18	848	5.4%	1,473	9.4%	1	0	2,322	14.8%
18-24	3,743	23.8%	5,090	32.3%	29	0.2%	8,862	56.3%
25-34	1,006	6.4%	1,740	11.1%	12	0.1%	2,758	17.5%
35-54	460	2.9%	1,183	7.5%	9	0.1%	1,652	10.5%
55 +	52	0.3%	95	0.6%	1	0.0%	148	0.9%
Total	6,109	38.8%	9,581	60.9%	52	0.3%	15,742	100.0%



Source: Local Banner data

Fall Enrollment by Age

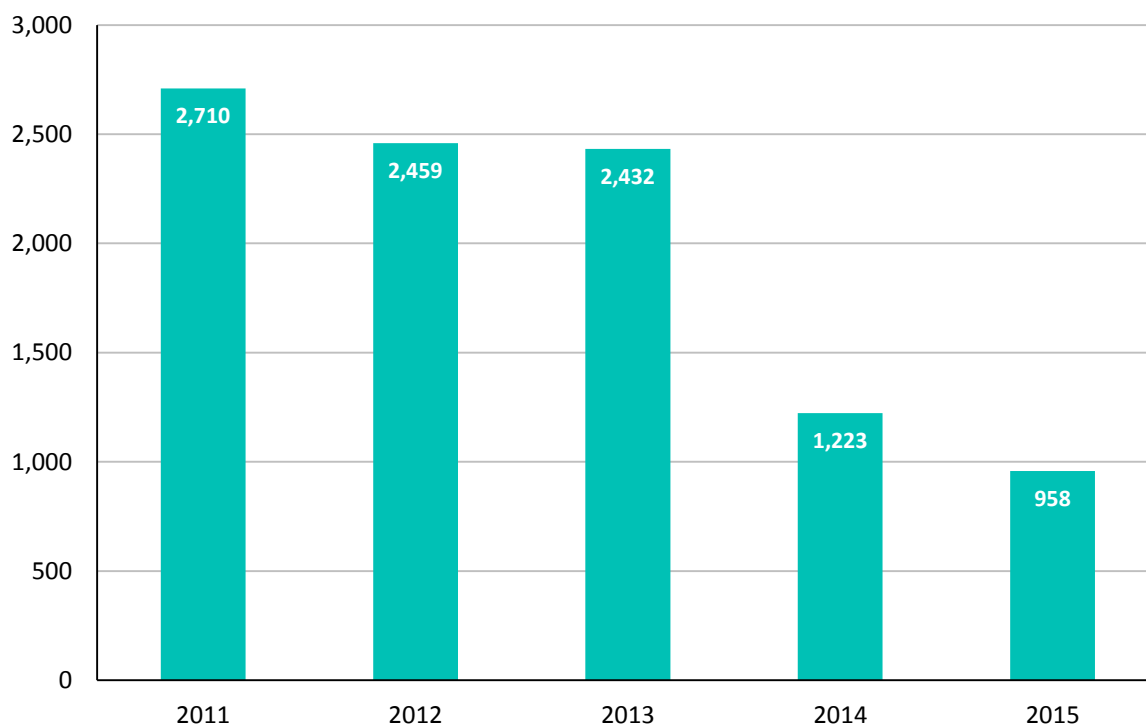
	Fall 2011	Fall 2012	Fall 2013	Fall 2014	Fall 2015	I-Year % Change	5-Year % Change
Mean Age	25.5	25.1	24.9	24.4	23.7	-2.6%	-6.9%
Age Range	Fall 2011	Fall 2012	Fall 2013	Fall 2014	Fall 2015	I-Year % Change	5-Year % Change
< 18	1,890	2,097	2,179	2,275	2,322	2.1%	22.9%
18-19	3,711	3,412	3,457	3,647	4,077	11.8%	9.9%
20-21	2,874	2,631	2,591	2,636	2,657	0.8%	-7.6%
22-24	2,365	2,162	2,099	2,099	2,128	1.4%	-10.0%
25-34	3,584	3,239	3,116	2,970	2,758	-7.1%	-23.0%
35-44	1,769	1,508	1,438	1,246	1,078	-13.5%	-39.1%
45-54	916	817	727	664	574	-13.6%	-37.3%
55 +	203	186	193	168	148	-11.9%	-27.1%



Source: Local Banner data

	Fall 2011	Fall 2012	Fall 2013	Fall 2014	Fall 2015	5-Year n Change	5-Year % Change
Students taking 1 or more Developmental Studies Course	2,710	2,459	2,432	1,223	958	-1,752	-64.6%
% of Total Enrollment in Developmental Studies	15.7%	15.3%	15.4%	7.8%	6.1%		
I-Year n Change		-251	-27	-1,209	-265		
I-Year % Change		-9.3%	-1.1%	-49.7%	-21.7%		

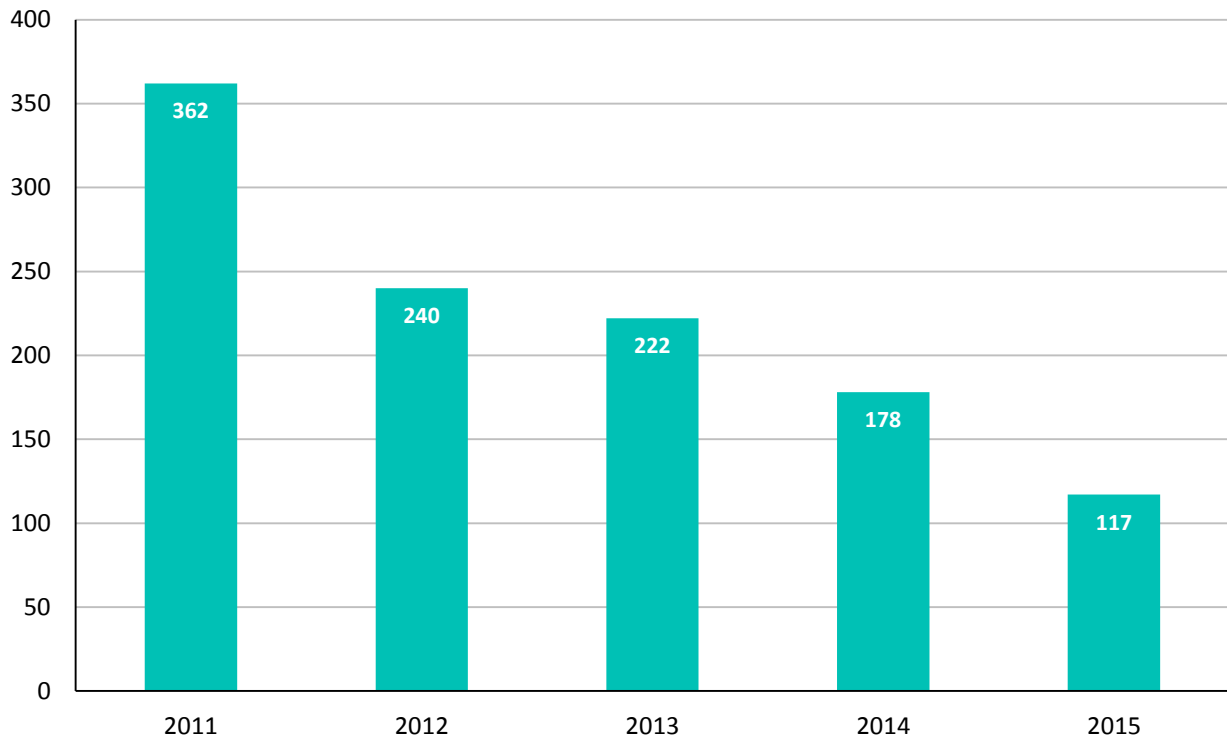
Students taking 1 or more Developmental Studies Course



Source: Local Banner data

	Fall 2011	Fall 2012	Fall 2013	Fall 2014	Fall 2015	5-Year n Change	5-Year % Change
Students taking 1 or more English for Academic Purposes (EAP) Course	362	240	222	178	117	-245	-67.7%
% of Total Enrollment in English for Academic Purposes (EAP)	2.1%	1.5%	1.4%	1.1%	0.7%		
1-Year n Change		-122	-18	-44	-61		
1-Year % Change		-33.7%	-7.5%	-19.8%	-34.3%		

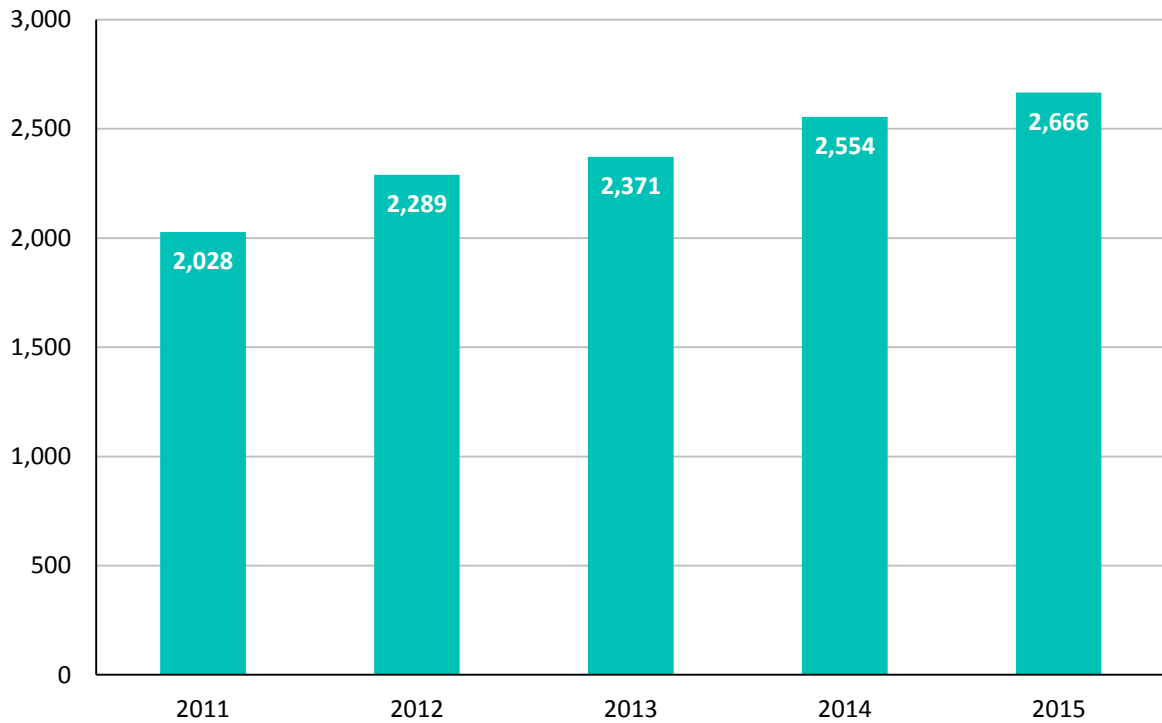
Students taking 1 or more English for Academic Purposes (EAP) Course



Source: Local Banner data

	Fall 2011	Fall 2012	Fall 2013	Fall 2014	Fall 2015	5-Year n Change	5-Year % Change
Dual Enrollment Students	2,028	2,289	2,371	2,554	2,666	638	31.5%
% of Total Enrollment	11.7%	14.3%	15.0%	16.3%	16.9%		
1-Year n Change		261	82	183	112		
1-Year % Change		12.9%	3.6%	7.7%	4.4%		

Dual Enrollment Students



Source: Local Banner data

Fall Enrollment by Primary Major

School of Health Professions	Fall 2012	Fall 2013	Fall 2014	Fall 2015
BAS Cardiopulmonary Science	26	37	36	38
BS Nursing	210	223	284	208
AS Cardiovascular Technology	35	35	38	37
AS Dental Hygiene	36	34	35	35
AS Emergency Medical Services	238	219	202	181
AS Fire Science Technology	62	63	50	43
AS Health Information Technology	30	28	21	25
AS Human Services	52	59	58	80
AS Nursing Basic Program	381	373	376	452
AS Nursing Advanced Placement	140	126	101	56
AS Radiologic Technology	48	49	59	62
AS Respiratory Care	64	60	57	63
AS Pre-Cardiovascular Technology*	67	42	38	---
AS Pre-Dental Hygiene*	212	191	240	2
AS Pre-Health Information Technology*	69	75	49	1
AS Pre-Human Services, Addiction*	25	15	8	1
AS Pre-Nursing*	1,582	1,523	1,521	16
AS Pre-Nursing AP*	119	119	116	1
AS Pre-Radiologic Technology*	370	345	303	8
AS Pre-Respiratory Care Technology*	59	64	61	16
Certificate in Addiction Studies	---	---	---	1
Certificate in Emergency Medical Technician	15	20	20	25
Certificate in Firefighter Minimum Standards	4	8	8	8
Certificate in Human Services Assistant	---	---	---	2
Certificate in Paramedic	14	7	15	6
Certificate in Dental Assisting	1	1	1	0
Certificate in Youth Development	---	---	---	1
ASN Opticianry	5	2	1	2
ASN Physical Therapist Assistant	25	25	9	21
Total School of Health Professions	3,889	3,743	3,707	1,391

*Beginning Fall 2015, Florida SouthWestern will no longer use 'Pre-Majors' as a program of study. Students included in this table with the 'Pre-Major' designation were in transition at the time of the internal census date.

Source: Local Banner data

School of Business and Technology	Fall 2012	Fall 2013	Fall 2014	Fall 2015
BAS Public Safety Administration	133	110	111	85
BAS Supervision and Management	405	390	420	414
AS Accounting Technology	117	102	101	88
AS Architectural Design and Construction Technology	7	37	36	48
AS Business Administration and Management	405	387	361	440
AS Civil Engineering Technology	9	29	34	44
AS Drafting and Design Technology	68	31	8	1
AS Computer Programming Analysis	140	181	176	181
AS Crime Scene Technology	87	65	59	70
AS Criminal Justice Technology	225	238	209	207
AS Internet Services Technology	35	16	7	5
AS Networking Services Technology	136	161	113	103
AS Paralegal Studies	170	150	125	115
Certificate in Accounting Technology Management	8	7	---	3
Certificate in Computer Programmer	1	3	2	5
Certificate in Computer Programmer Specialist	1	1	---	2
Certificate in Crime Scene Technician	2	0	1	3
Certificate in Business Data Processing	2	---	1	---
Certificate in Business Development and Entrepreneurship	---	---	---	4
Certificate in Information Technology Management	---	3	4	2
Certificate in Information Technology Support Specialist	---	3	3	5
Certificate in Network Specialist	5	1	1	1
Certificate in Network Security	---	---	2	5
Certificate in Small Business Management	20	14	16	11
Total School of Business and Technology	1,976	1,929	1,790	1,842

Source: Local Banner data

	Fall 2012	Fall 2013	Fall 2014	Fall 2015
School of Arts, Humanities, and Social Sciences				
School of Pure and Applied Sciences				
AA General Studies	9,429	9,406	9,488	9,963
AA Respiratory Care Focus	---	---	---	28
AA Cardiovascular Tech Focus	---	---	---	18
AA Dental Hygiene Focus	---	---	---	183
AA Health Information Technology Focus	---	---	---	33
AA Nursing Entry Focus	---	---	---	933
AA Nursing Transition Focus	---	---	---	63
AA Radiologic Technology Focus	---	---	---	164
Total School of Arts, Humanities, and Social Sciences and School of Pure and Applied Sciences	9,429	9,406	9,488	11,385

School of Education

BS Elementary Education	200	195	179	143
BS Middle Grades Language Arts Education	23	21	20	16
BS Middle Grades Mathematics Education	17	14	8	7
BS Middle Grades Science Education	5	8	7	7
BS Secondary Biology Education	---	2	3	3
BS Secondary Mathematics Education	9	7	4	4
AS Early Childhood Education	38	16	21	87
Total School of Education	292	263	242	267

Non-degree Seeking	466	459	478	857
---------------------------	------------	------------	------------	------------

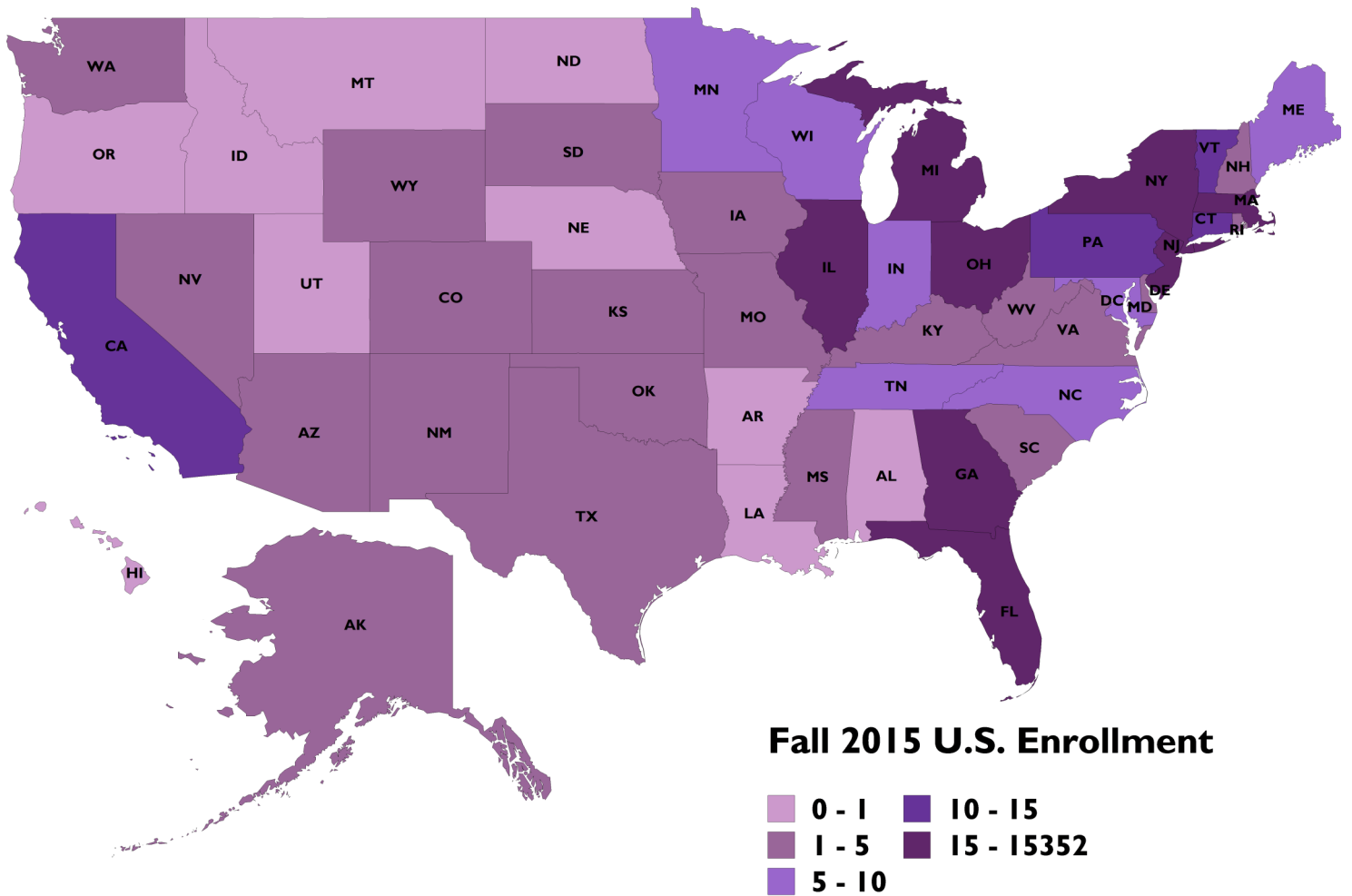


ENROLLMENT BY LOCATION

Photo by Kimberly Fischer

Fall 2015

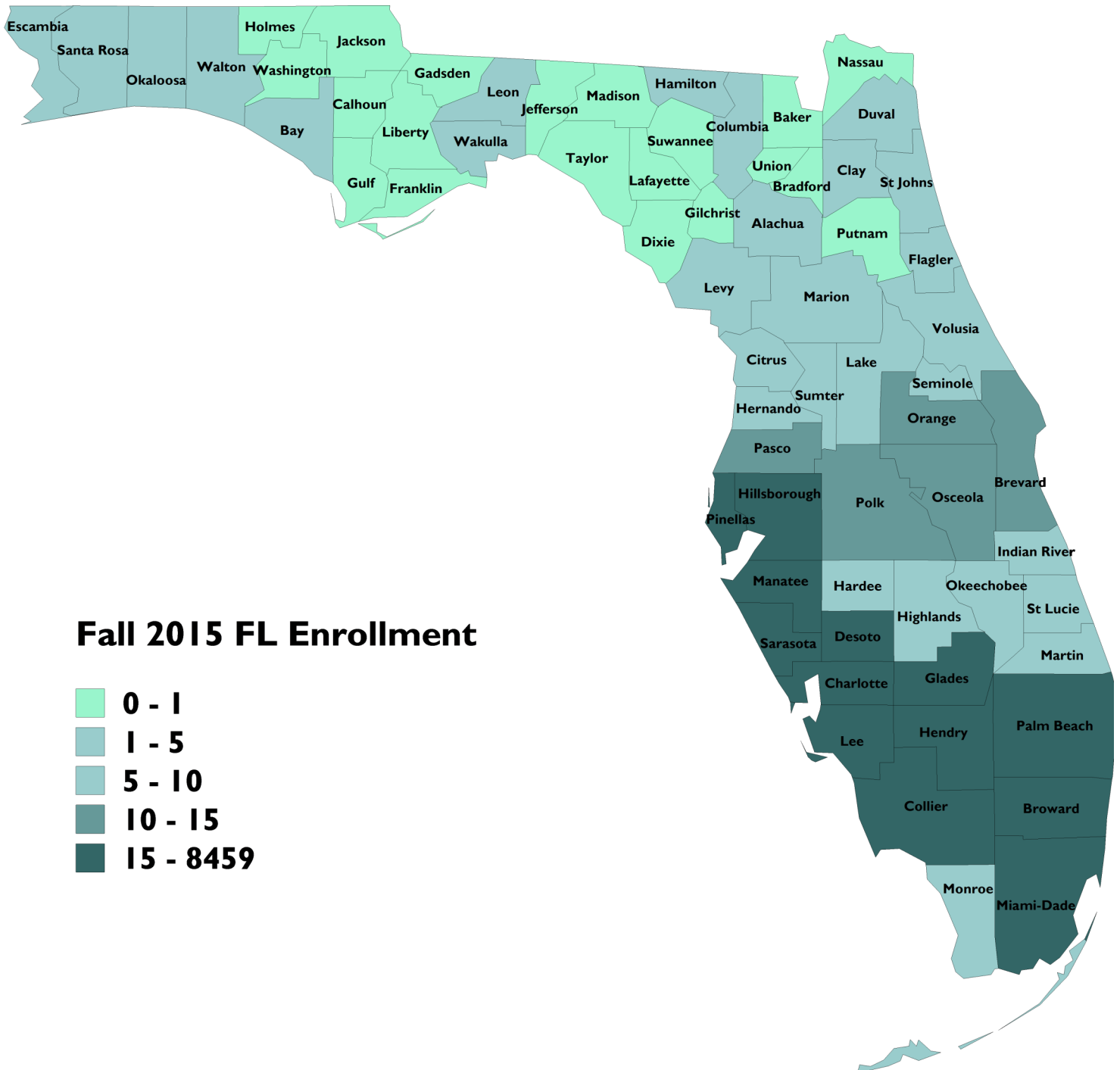
State	<u>n</u>	State	<u>n</u>
Alabama	0	Montana	0
Alaska	1	Nebraska	0
Arizona	2	Nevada	2
Arkansas	0	New Hampshire	4
California	10	New Jersey	28
Colorado	4	New Mexico	2
Connecticut	14	New York	51
District of Columbia	0	North Carolina	9
Delaware	1	North Dakota	0
Florida	15,352	Ohio	21
Georgia	21	Oklahoma	1
Hawaii	0	Oregon	0
Idaho	0	Pennsylvania	13
Illinois	30	Rhode Island	4
Indiana	9	South Carolina	4
Iowa	1	South Dakota	1
Kansas	1	Tennessee	7
Kentucky	3	Texas	4
Louisiana	0	Utah	0
Maine	8	Vermont	2
Maryland	7	Virginia	10
Massachusetts	15	Washington	2
Michigan	30	West Virginia	2
Minnesota	9	Wisconsin	6
Mississippi	1	Wyoming	1
Missouri	4		



Source: Local Banner data

Fall 2015

County	n	County	n
Alachua	4	Levy	1
Bay	5	Manatee	17
Brevard	11	Marion	4
Broward	82	Martin	5
Charlotte	1,560	Miami-Dade	74
Citrus	7	Monroe	9
Clay	1	Okaloosa	6
Collier	4,117	Okeechobee	2
Columbia	3	Orange	14
Desoto	63	Osceola	11
Duval	6	Palm Beach	58
Escambia	1	Pasco	12
Flagler	1	Pinellas	15
Glades	47	Polk	13
Hamilton	1	Santa Rosa	1
Hardee	2	Sarasota	225
Hendry	430	Seminole	4
Hernando	4	St Johns	1
Highlands	6	St Lucie	7
Hillsborough	37	Sumter	2
Indian River	3	Volusia	9
Lake	5	Wakulla	2
Lee	8,459	Walton	1
Leon	4		



Source: Local Banner data



CREDIT HOURS

Photo by Bria Franklin

3-Year Total SCH	Spring 2013	Spring 2014	Spring 2015	1-Year % Change
School of Arts Hum & Soc Sci	51,621	50,834	52,044	2.4%
School of Business and Tech	14,478	14,263	13,561	-4.9%
School of Education	4,888	4,535	4,191	-7.6%
School of Health Professions	10,323	9,752	11,208	14.9%
School of Pure & Applied Sci	36,175	36,113	39,617	9.7%
College and Career Readiness	13,874	12,369	5,386	-56.5%
Library (Undergrad Research)	39	70	54	-22.9%

Spring 2015 SCH by Campus	Lee	Collier	Charlotte	Hendry/ Glades	FSW Online
School of Arts Hum & Soc Sci	25,492	9,005	4,399	1,158	11,990
School of Business and Tech	4,825	1,047	465	60	7,164
School of Education	2,854	306	153	0	878
School of Health Professions	5,625	2,169	1,444	0	1,970
School of Pure & Applied Sci	22,671	7,118	3,675	913	5,240
College and Career Readiness	3,351	1,386	390	105	154
Library (Undergrad Research)	18	3	3	0	30

Spring 2015 SCH by Part of Term	Full-Term	Mini-A	Mini-B	Special C	Dual Enrollment
School of Arts Hum & Soc Sci	46,839	972	1,050	6	3,177
School of Business and Tech	10,621	1,452	1,302	141	45
School of Education	3,986	0	4	0	201
School of Health Professions	8,031	669	605	1,903	0
School of Pure & Applied Sci	38,911	0	0	15	691
College and Career Readiness	4,851	78	156	154	147
Library (Undergrad Research)	29	10	15	0	0

Source: Local Banner data

Summer Credit Hour Summary

3-Year Total SCH	Summer 2013	Summer 2014	Summer 2015	1-Year % Change
School of Arts, Humanities & Social Sciences	17,731	16,802	16,412	-2.3%
School of Business and Technology	6,094	6,014	4,845	-19.4%
School of Education	1,431	1,191	1,230	3.3%
School of Health Professions	4,199	4,192	4,107	-2.0%
School of Pure & Applied Sciences	16,033	16,524	16,616	0.6%
College and Career Readiness	4,686	3,207	1,359	-57.6%
Library (Undergraduate Research)	33	33	29	-12.1%

Summer 2015 SCH by Campus	Lee	Collier	Charlotte	Hendry/ Glades	FSW Online
School of Arts, Humanities & Social Sciences	6,850	1,824	447	18	7,273
School of Business and Technology	1,071	99	36	0	3,639
School of Education	442	0	0	0	788
School of Health Professions	2,002	531	216	0	1,358
School of Pure & Applied Sciences	9,048	2,767	864	176	3,761
College and Career Readiness	825	402	57	0	75
Library (Undergraduate Research)	3	0	0	0	26

Summer 2015 SCH by Part of Term	Full Term	Mini-A	Mini-B	Special C	Dual Enrollment
School of Arts, Humanities & Social Sciences	5,037	5,603	5,772	0	---
School of Business and Technology	3,284	843	700	18	---
School of Education	57	864	309	0	---
School of Health Professions	2,271	1,106	477	253	---
School of Pure & Applied Sciences	5,217	6,392	5,007	0	---
College and Career Readiness	0	396	888	75	---
Library (Undergraduate Research)	3	13	13	0	---

Source: Local Banner data

Fall Credit Hour Summary

3-Year Total SCH	Fall 2013	Fall 2014	Fall 2015	1-Year % Change
School of Arts, Humanities & Social Sciences	51903	53620	56497	5.4%
School of Business and Technology	14553	14526	13800	-5.0%
School of Education	4781	4600	4028	-12.4%
School of Health Professions	10294	10664	10358	-2.9%
School of Pure & Applied Sciences	37459	40429	43956	8.7%
College and Career Readiness	20087	10341	10752	4.0%
Library (Undergraduate Research)	81	82	33	-59.8%

Fall 2015 SCH by Campus	Lee	Collier	Charlotte	Hendry/ Glades	FSW Online
School of Arts, Humanities & Social Sciences	28342	10420	4774	1020	11941
School of Business and Technology	5217	1152	411	198	6822
School of Education	2883	261	39	84	761
School of Health Professions	5150	2030	1221	0	1957
School of Pure & Applied Sciences	23300	8362	4701	1290	6303
College and Career Readiness	6753	2550	780	444	225
Library (Undergraduate Research)	18	0	0	0	15

Fall 2015 SCH by Part of Term	Full Term	Mini-A	Mini-B	Special C	Dual Enrollment
School of Arts, Humanities & Social Sciences	51205	648	1165	0	3479
School of Business and Technology	11087	1359	1290	25	39
School of Education	3906	0	8	0	114
School of Health Professions	7584	947	857	970	0
School of Pure & Applied Sciences	42873	0	72	0	1011
College and Career Readiness	10377	0	72	153	150
Library (Undergraduate Research)	33	0	0	0	0

Source: Local Banner data

Credit Hours by Academic Year

3-Year Total SCH	AY 2012-13	AY 2013-14	AY 2014-15	1-Year % Change
School of Arts, Humanities & Social Sciences	126,353	120,468	122,466	1.66%
School of Business and Technology	36,643	34,910	34,101	-2.32%
School of Education	11,551	10,747	9,982	-7.12%
School of Health Professions	24,730	24,245	26,064	7.50%
School of Pure & Applied Sciences	88,797	89,605	96,570	7.77%
College and Career Readiness	37,115	37,142	18,934	-49.02%
Library (Undergraduate Research)	108	184	169	-8.15%

AY 2014-15 SCH By Campus	Lee	Collier	Charlotte	Hendry/ Glades	FSW Online
School of Arts, Humanities & Social Sciences	58,780	21,068	10,269	2,430	29,919
School of Business and Technology	12,552	2,520	993	213	17,823
School of Education	6,482	720	397	0	2,383
School of Health Professions	12,970	4,770	2,741	0	5,583
School of Pure & Applied Sciences	54,676	17,145	8,665	2,096	13,988
College and Career Readiness	12,343	4,385	1,208	580	418
Library (Undergraduate Research)	72	3	3	3	88

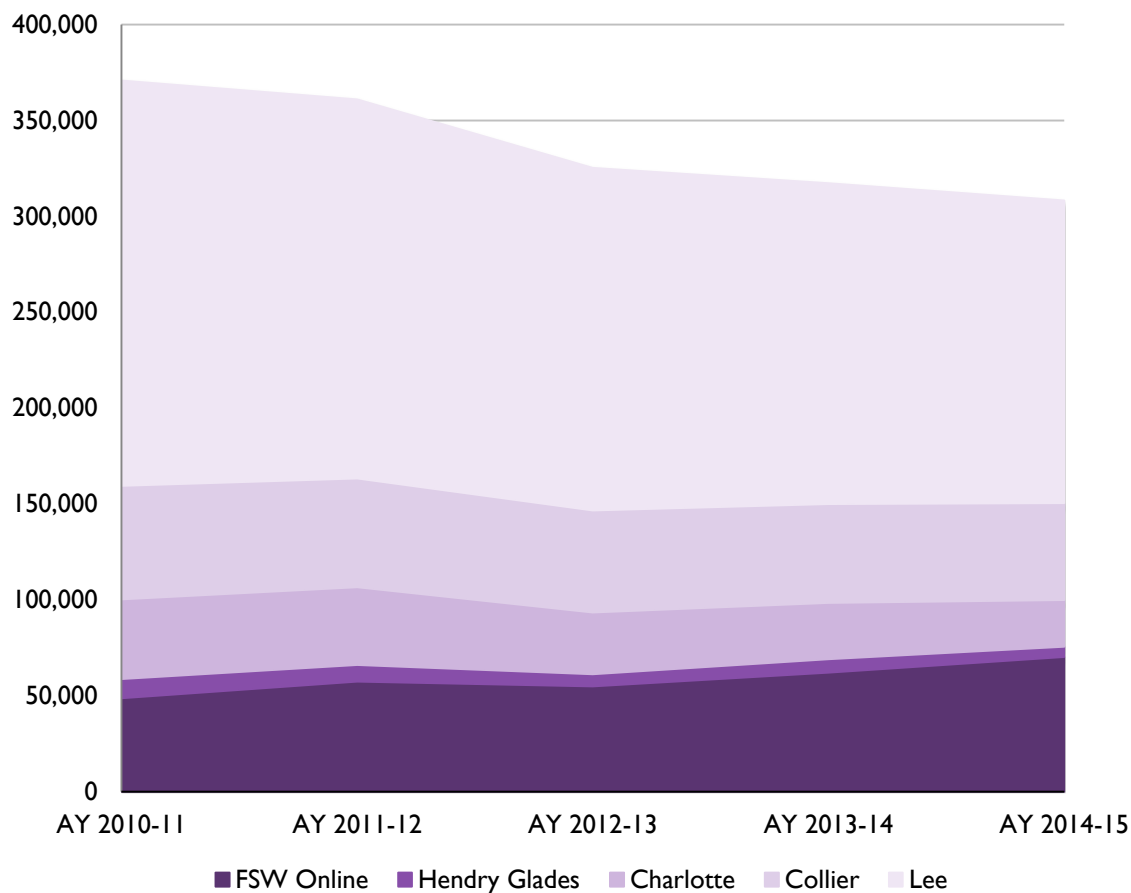
AY 2014-15 SCH by Part of Term	Full Term	Mini-A	Mini-B	Special C	Dual Enrollment
School of Arts, Humanities and Social Sciences	99,693	8,004	8,451	6	6,312
School of Business and Technology	25,137	4,351	4,175	339	99
School of Education	8,236	840	426	0	480
School of Health Professions	16,364	3,015	2,527	4,158	0
School of Pure & Applied Sciences	83,269	6,200	5,541	45	1,515
College and Career Readiness	14,442	1,678	2,051	418	345
Library (Undergraduate Research)	104	26	39	0	0

Source: Local Banner data

Credit Hours Produced by Campus

	AY 2010-11	AY 2011-12	AY 2012-13	AY 2013-14	AY 2014-15	1-Year % Change	5-Year % Change
Lee	211,438	197,842	178,780	167,354	157,875	-5.7%	-33.9%
Collier	59,284	56,587	53,128	51,642	50,611	-2.0%	-17.1%
Charlotte	41,485	40,582	32,228	29,283	24,276	-17.1%	-70.9%
Hendry Glades	10,030	8,598	6,366	7,025	5,322	-24.2%	-88.5%
FSW Online	48,617	57,417	54,795	61,997	70,202	13.2%	30.7%

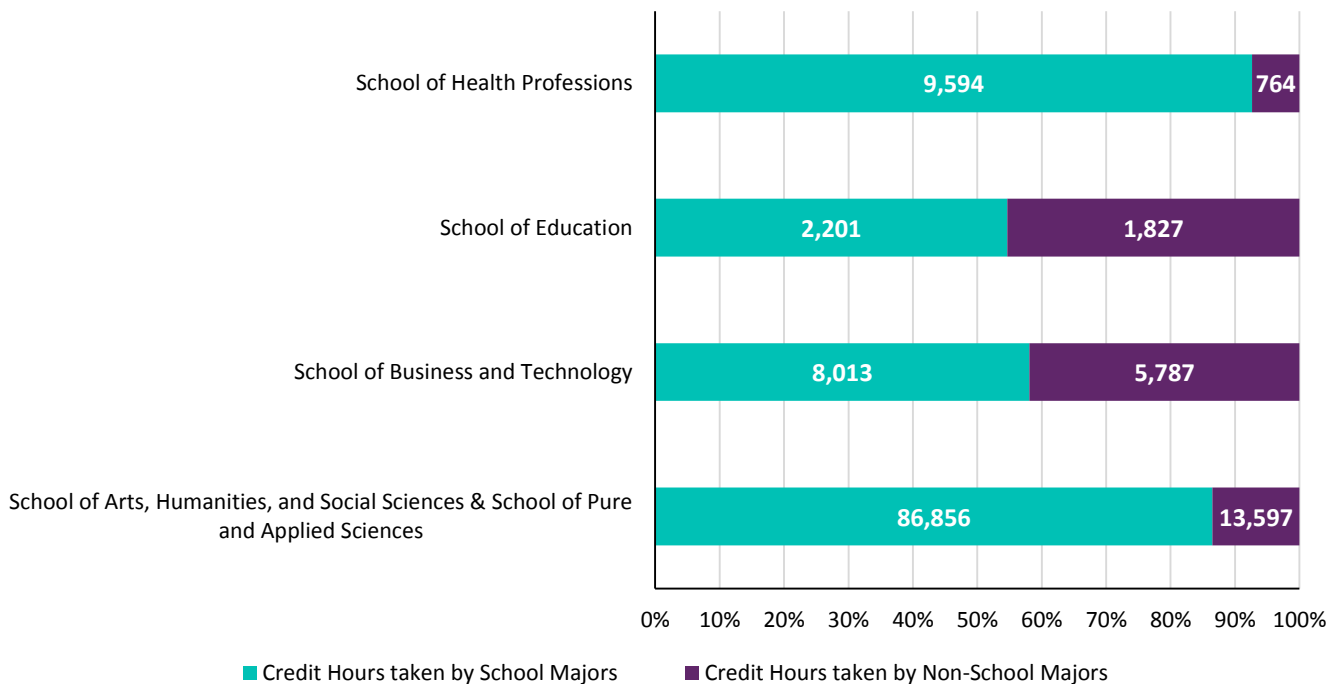
	AY 2010-11	AY 2011-12	AY 2012-13	AY 2013-14	AY 2014-15
Lee	57.0%	54.8%	55.0%	52.7%	51.2%
Collier	16.0%	15.7%	16.3%	16.3%	16.4%
Charlotte	11.2%	11.2%	9.9%	9.2%	7.9%
Hendry Glades	2.7%	2.4%	2.0%	2.2%	1.7%
FSW Online	13.1%	15.9%	16.8%	19.5%	22.8%



Source: Local Banner data

Fall 2015

	Credit Hours taken by School Majors	Percent of Credit Hours taken by School Majors	Credit Hours taken by Non-School Majors	Percent of Credit Hours taken by Non-School Majors
School of Arts, Humanities, and Social Sciences & School of Pure and Applied Sciences	86,856	86.5%	13,597	13.5%
School of Business and Technology	8,013	58.1%	5,787	41.9%
School of Education	2,201	54.6%	1,827	45.4%
School of Health Professions	9,594	92.6%	764	7.4%



Source: Local Banner data



ACADEMIC ACHIEVEMENT

Photo by Talia Garcia

Bachelor of Applied Science

- Cardiopulmonary Sciences
- Public Safety Administration
- Supervision and Management

Bachelor of Science

- Elementary Education
- Middle Grades Language Arts Education
- Middle Grades Mathematics Education
- Middle Grades Science Education
- Nursing
- Secondary Biology Education
- Secondary Mathematics Education

Associate in Arts

- General Studies

Associate in Science

- Accounting Technology
- Architectural Design and Construction Technology
- Business Administration and Management
- Cardiovascular Technology
- Civil Engineering Technology
- Computer Programming Analysis
- Crime Scene Technology
- Criminal Justice Technology
- Dental Hygiene
- Early Childhood Education
- Emergency Medical Services
- Fire Science Technology
- Health Information Technology
- Human Services
- Networking Systems Technology
- Nursing
- Paralegal Studies
- Radiologic Technology
- Respiratory Care

Certificates

- Accounting Technology Management
- Addiction Studies
- Business Development & Entrepreneurship
- Computer Programmer
- Computer Programming Specialist
- Crime Scene Technician
- Information Technology Support Specialist
- Intermodal Freight Transportation
- Emergency Medical Technician
- Firefighter Minimum Standards
- Human Services Assistant
- Network Enterprise Administration
- Network Security
- Paramedic
- Small Business Management
- Youth Development

School of Arts, Humanities, and Social Sciences & School of Pure and Applied Sciences

	AY 2010-11	AY 2011-12	AY 2012-13	AY 2013-14	AY 2014-15
Associate's Degrees	1,528	1,777	1,755	1,714	1,438

School of Business and Technology

	AY 2010-11	AY 2011-12	AY 2012-13	AY 2013-14	AY 2014-15
Certificates	36	34	33	22	33
Associate's Degrees	252	246	208	218	168
Bachelor's Degrees	78	109	161	134	148

School of Education

	AY 2010-11	AY 2011-12	AY 2012-13	AY 2013-14	AY 2014-15
Associate's Degrees	18	9	7	1	2
Bachelor's Degrees	100	117	103	106	93

School of Health Professions

	AY 2010-11	AY 2011-12	AY 2012-13	AY 2013-14	AY 2014-15
Certificates	286	245	223	229	207
Associate's Degrees	415	390	407	375	334
Bachelor's Degrees	95	84	92	92	100

Florida SouthWestern State College Total

	AY 2010-11	AY 2011-12	AY 2012-13	AY 2013-14	AY 2014-15
Certificates	322	279	256	251	240
Associate's Degrees	2,213	2,422	2,377	2,308	1,942
Bachelor's Degrees	273	310	356	332	341

School of Health Professions

Bachelor's Degrees

Major	AY 2010-11	AY 2011-12	AY 2012-13	AY 2013-14	AY 2014-15
Cardiopulmonary Sciences	---	1	5	9	7
Nursing	95	83	87	83	93

Associate's Degrees

Major	AY 2010-11	AY 2011-12	AY 2012-13	AY 2013-14	AY 2014-15
Cardiovascular Technology	12	13	11	18	10
Dental Hygiene	16	16	14	14	15
Emergency Medical Services	37	29	53	40	23
Fire Science Technology	32	13	19	14	7
Health Information Technology	1	14	15	10	9
Nursing	277	254	238	224	230
Radiologic Technology	20	20	26	21	21
Respiratory Care	20	31	31	34	19

Certificates

Major	AY 2010-11	AY 2011-12	AY 2012-13	AY 2013-14	AY 2014-15
Emergency Medical Technician	213	152	137	141	129
Firefighter Minimum Standards	25	39	6	31	39
Paramedic	48	54	80	57	33

Total

	AY 2010-11	AY 2011-12	AY 2012-13	AY 2013-14	AY 2014-15
Bachelor's Degrees	95	84	92	92	100
Associate's Degrees	415	390	407	375	334
Certificates	286	245	223	229	201

School of Business and Technology

Bachelor's Degrees

Major	AY 2010-11	AY 2011-12	AY 2012-13	AY 2013-14	AY 2014-15
Public Safety Administration	38	30	42	37	27
Supervision and Management	40	79	119	97	121

Associate's Degrees

Major	AY 2010-11	AY 2011-12	AY 2012-13	AY 2013-14	AY 2014-15
Accounting Technology	20	22	15	16	12
Architectural Design & Construction Technology	---	---	---	1	7
Business Administration and Management	60	39	34	38	27
Civil Engineering Technology	---	---	---	4	3
Computer Programming Analysis	8	8	7	12	12
Crime Scene Technology	9	15	9	14	12
Criminal Justice Technology	54	65	66	60	46
Drafting and Design Technology	24	16	12	13	1
Golf Course Operations	3	3	1	---	1
Internet Services Technology	7	7	2	---	1
Networking Services Technology	17	33	21	25	24
Paralegal Studies	50	38	41	35	22

Certificates

Major	AY 2010-11	AY 2011-12	AY 2012-13	AY 2013-14	AY 2014-15
Accounting Technology Management	7	10	10	3	2
Business Data Processing	1	4	1	---	---
Computer Programmer	---	---	---	1	4
Computer Programming Specialist	8	3	11	2	6
Crime Scene Technology	13	3	4	4	3
Information Technology Management	---	---	---	6	4
Information Technology Support Specialist	---	---	3	1	9
Small Business Management	7	14	4	5	5

Total

	AY 2010-11	AY 2011-12	AY 2012-13	AY 2013-14	AY 2014-15
Bachelor's Degrees	78	109	161	134	148
Associate's Degrees	252	246	208	218	168
Certificates	36	34	33	22	33

Source: Local Banner data

School of Education

Bachelor's Degrees					
Major	AY 2010-11	AY 2011-12	AY 2012-13	AY 2013-14	AY 2014-15
Elementary Education	92	102	82	88	75
Middle Grades Language Arts Education	---	---	10	6	7
Middle Grades Mathematics Education	---	1	7	6	5
Middle Grades Science Education	---	---	---	4	1
Secondary Biology Education	2	6	---	---	1
Secondary Mathematics Education	6	8	4	2	4

Associate's Degrees					
Major	AY 2010-11	AY 2011-12	AY 2012-13	AY 2013-14	AY 2014-15
Early Childhood Education	18	9	7	1	2

Total					
	AY 2010-11	AY 2011-12	AY 2012-13	AY 2013-14	AY 2014-15
Bachelor's Degrees	100	117	103	106	93
Associate's Degrees	18	9	7	1	2

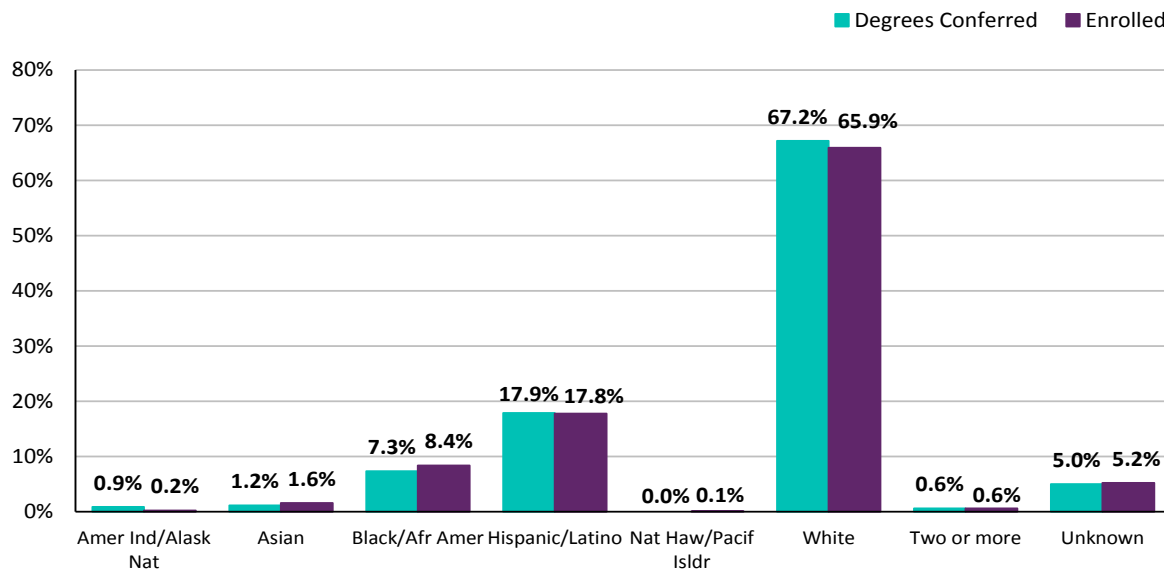
School of Arts, Humanities, & Social Sciences and School of Pure & Applied Sciences

Associate's Degrees / Total					
Major	AY 2010-11	AY 2011-12	AY 2012-13	AY 2013-14	AY 2014-15
General Studies	1,528	1,777	1,755	1,714	1,438

Source: Local Banner data

Bachelor's Degree Student Demographics and Degrees Conferred

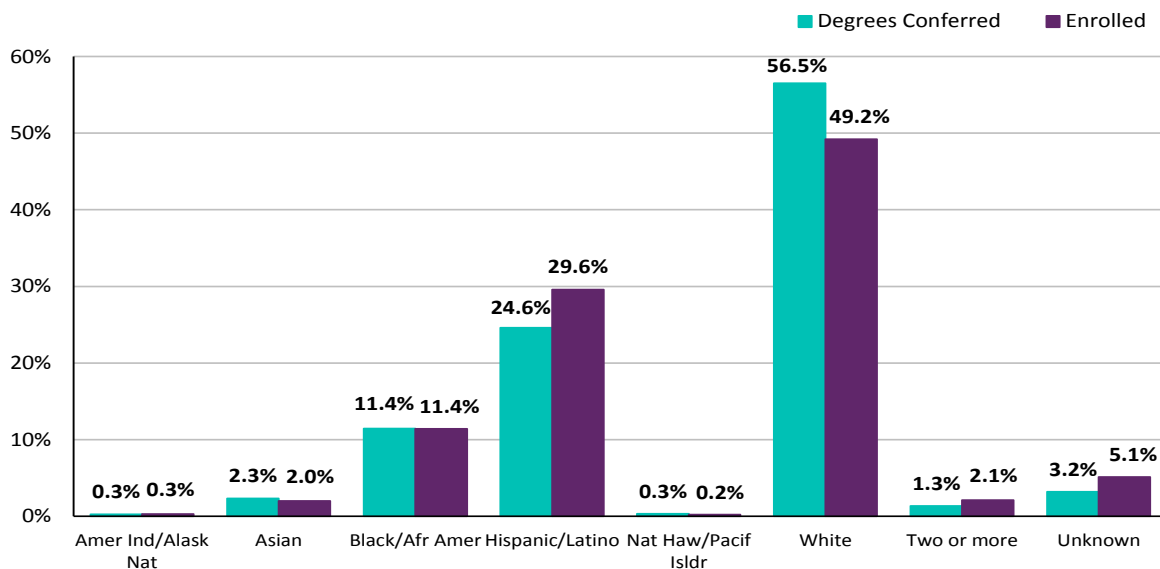
	AY 14-15		Fall 2015	
	Bachelor's Degrees Conferred		Enrolled & Seeking a Bachelor's Degree	
	n	%	n	%
Total	341	100%	925	100.0%
Gender				
Female	233	68.3%	665	71.9%
Male	106	31.1%	259	28.0%
Unknown	2	0.6%	1	0.1%
Race/Ethnicity				
Amer Ind/Alask Nat	3	0.9%	2	0.2%
Asian	4	1.2%	15	1.6%
Black/Afr Amer	25	7.3%	78	8.4%
Hispanic/Latino	61	17.9%	165	17.8%
Nat Haw/Pacif Islldr	0	0.0%	1	0.1%
White	229	67.2%	610	65.9%
Two or more	2	0.6%	6	0.6%
Unknown	17	5.0%	48	5.2%
Average Age	33.4	---	32.8	---



Source: Local Banner data

Associate's Degree Student Demographics and Degrees Conferred

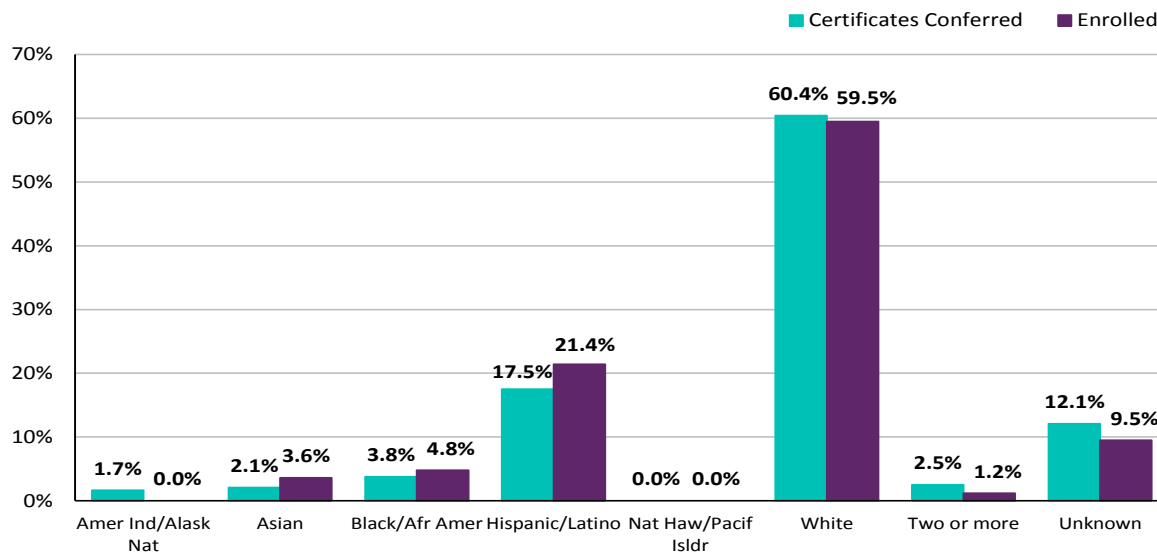
	AY 14-15 Associate's Degrees Conferred		Fall 2015 Enrolled & Seeking an Associate's Degree	
	n	%	n	%
Total	1,942	100%	13,876	100%
Gender				
Female	1,233	63.5%	8,296	59.8%
Male	699	36.0%	5,536	39.9%
Unknown	10	0.5%	44	0.3%
Race/Ethnicity				
Amer Ind/Alask Nat	5	0.3%	40	0.3%
Asian	45	2.3%	278	2.0%
Black/Afr Amer	222	11.4%	1,588	11.4%
Hispanic/Latino	478	24.6%	4,113	29.6%
Nat Haw/Pacif Islldr	6	0.3%	23	0.2%
White	1,098	56.5%	6,830	49.2%
Two or more	26	1.3%	297	2.1%
Unknown	62	3.2%	707	5.1%
Average Age	26.9	---	22.8	---



Source: Local Banner data

Certificate Student Demographics and Certificates Conferred

	AY 14-15 Certificates Conferred		Fall 2015 Enrolled & Seeking a Certificate	
	n	%	n	%
Total	240	100%	84	100.0%
Gender				
Female	67	27.9%	26	31.0%
Male	173	72.1%	58	69.0%
Unknown	0	0.0%	0	0.0%
Race/Ethnicity				
Amer Ind/Alask Nat	4	1.7%	0	0.0%
Asian	5	2.1%	3	3.6%
Black/Afr Amer	9	3.8%	4	4.8%
Hispanic/Latino	42	17.5%	18	21.4%
Nat Haw/Pacif Islldr	0	0.0%	0	0.0%
White	145	60.4%	50	59.5%
Two or more	6	2.5%	1	1.2%
Unknown	29	12.1%	8	9.5%
Average Age	26.3	---	27.2	---



Source: Local Banner data



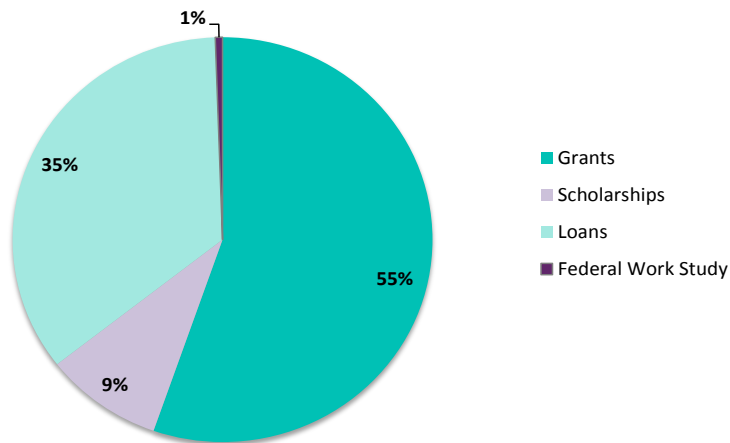
STUDENT FINANCIAL AID

Photo by Erin Lawrence

Student Financial Aid Paid Fiscal Year 2014-15

	Awards	Total Amount Paid	Average Amount Paid per Award
Grants			
Federal Pell Grant	6,948	\$23,306,692	\$3,354
Federal SEOG Grant	266	\$264,950	\$996
Florida Grants	495	\$820,667	\$1,608
Scholarships			
Florida Scholarships	548	\$622,430	\$1,136
Institutional/ Foundation Scholarships	1,807	\$3,392,408	\$1,877
Loans			
Federal Direct Subsidized Loan	3,153	\$10,404,894	\$3,300
Federal Direct Unsubsidized Loan	1,293	\$4,572,442	\$3,536
Federal Direct Loan Parent PLUS	24	\$215,005	\$8,959
Private Loan	35	\$238,024	\$6,801
Federal Work Study			
Federal Work Study	100	\$244,330	\$2,443

	Unduplicated Students	Total Amount Paid	Average Amount Paid per Student
Grants	6,953	\$24,392,309	\$3,153
Scholarships	1,711	\$4,014,838	\$1,705
Loans	3,612	\$15,430,365	\$3,425
Federal Work Study	100	\$244,330	\$2,443
<i>Paid Any Financial Aid</i>	<i>8,945</i>	<i>\$44,081,841</i>	<i>\$2,999</i>



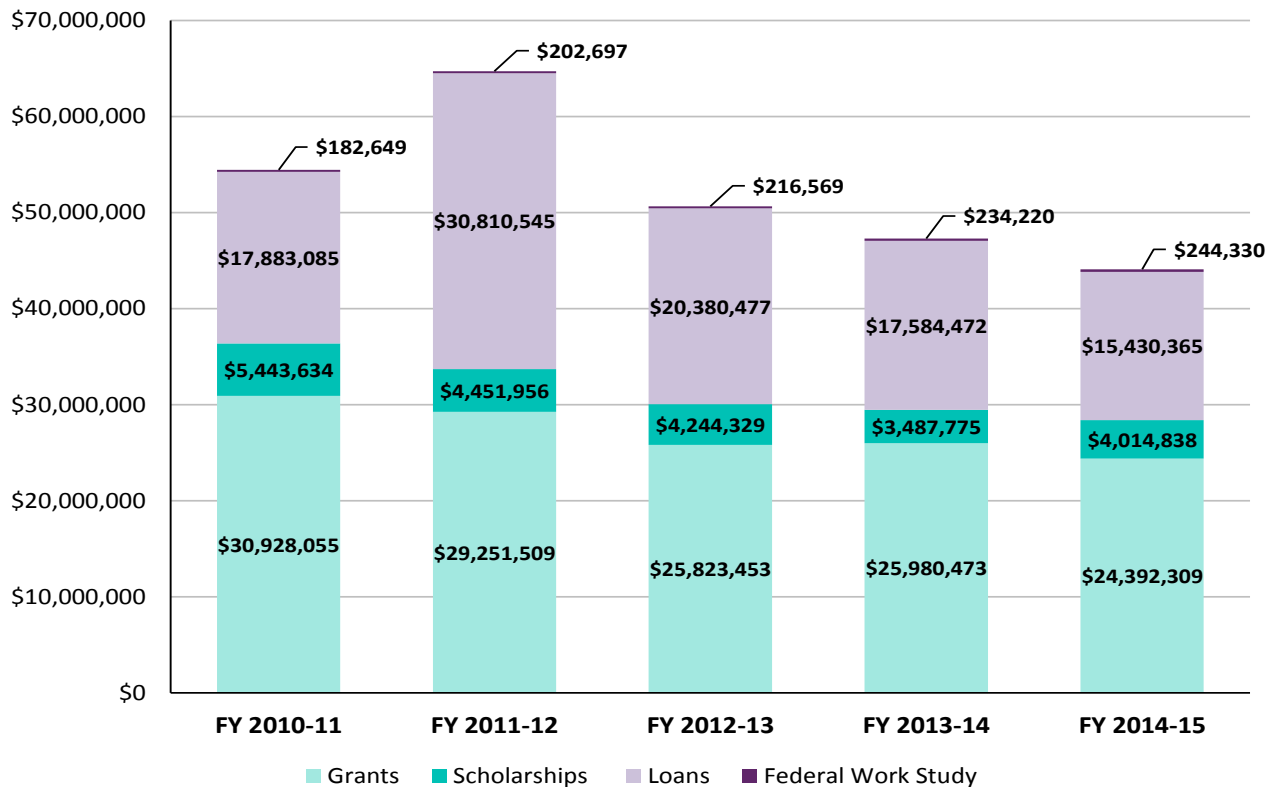
Student Financial Aid Paid FY 2010-11 - FY 2014-15

Total Amount Paid

	FY 2010-11	FY 2011-12	FY 2012-13	FY 2013-14	FY 2014-15	5-Year % Change
Grants	\$30,928,055	\$29,251,509	\$25,823,453	\$25,980,473	\$24,392,309	-21.1%
Scholarships	\$5,443,634	\$4,451,956	\$4,244,329	\$3,487,775	\$4,014,838	-26.2%
Loans	\$17,883,085	\$30,810,545	\$20,380,477	\$17,584,472	\$15,430,365	-13.7%
Federal Work Study	\$182,649	\$202,697	\$216,569	\$234,220	\$244,330	33.8%
Total	\$54,437,423	\$64,716,707	\$50,664,828	\$47,286,941	\$44,081,841	-19.0%

Unduplicated Students Paid

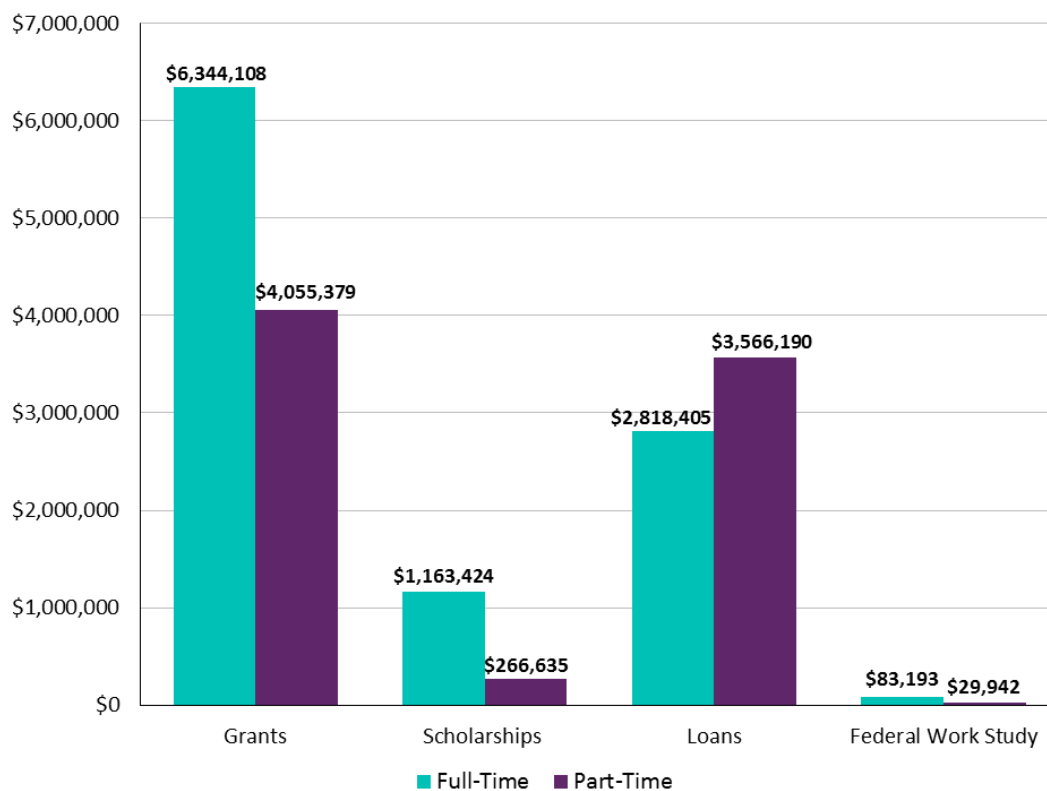
	FY 2010-11	FY 2011-12	FY 2012-13	FY 2013-14	FY 2014-15	5-Year % Change
Grants	8,601	8,770	7,658	7,712	6,953	-19.2%
Scholarships	3,280	2,916	2,502	1,979	1,711	-47.8%
Loans	4,639	5,205	4,670	4,198	3,612	-22.1%
Federal Work Study	61	63	72	94	100	63.9%
Total	11,432	11,382	9,994	9,819	8,945	-21.8%



Source: Local Banner data

Fall 2015 Students Paid Financial Aid

	Students n	Paid Any Financial Aid	Paid Pell	Paid Any Scholarships	Paid Any Loans	Paid Federal Work Study
Headcount	15,742	42.7%	32.8%	6.4%	17.0%	0.5%
Full-Time	5,389	59.0%	45.9%	13.9%	21.7%	1.1%
Part-Time	10,353	34.2%	30.0%	4.2%	14.6%	0.2%
Under 18	2,323	1.9%	1.6%	0.0%	0.5%	0.0%
18 - 24	8,861	49.2%	37.5%	10.4%	15.0%	0.7%
25 - 34	2,758	51.2%	39.8%	5.2%	29.2%	0.3%
35 - 54	1,652	51.3%	40.4%	7.0%	30.0%	0.5%
55 and Over	148	35.1%	23.0%	4.1%	23.0%	0.0%
Certificate	84	14.3%	7.1%	3.6%	6.0%	0.0%
Associate	13,876	44.5%	34.6%	7.3%	17.1%	0.5%
Bachelor	925	56.2%	37.9%	17.6%	32.1%	0.5%
Non-Degree	857	1.2%	0.0%	1.2%	0.0%	0.0%



Source: Local Banner data

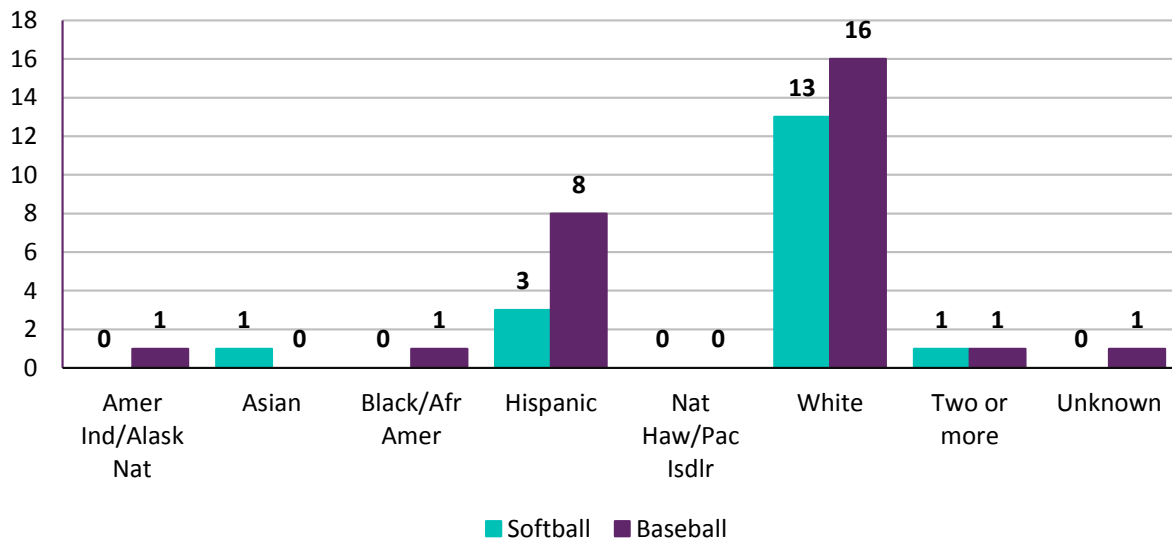


INSTITUTIONAL INFORMATION

Photo by Corrine Price

Spring 2016 Student Athletes

	Softball Baseball		Race/Ethnicity	Softball Baseball		
	<u>n</u>	<u>n</u>		<u>n</u>	<u>n</u>	
Total Participants	18	28	American Indian/Native Alaskan	0	1	
Age			Asian	1	0	
	18-19	17	23	Black/African American	0	1
	20-21	1	5	Hispanic	3	8
	Average	18.7	18.9	Native Hawaiian/Pacific Islander	0	0
Degree & Major			White	13	16	
	AA General Studies	16	28	Two or more	1	1
	AA Nursing Entry Focus	1	0	Unknown	0	1
	AA Radiologic Technology Focus	1	0			



Source: Local Banner data

The FSW Library Services provides a comprehensive collection of print books, eBooks, streaming videos, journals, newspapers, magazines, and other resources, in addition to interlibrary loan and documentary delivery services, to support the curriculum and research needs of the college community. Most of these resources are accessible in full text through the libraries' website, which also features research guides and tutorials created by FSW librarians. The FSW Libraries has a robust instructional program, providing research instruction to students on a one-on-one basis, and to classes of students through formal library research instruction. FSW librarians also teach the one credit online course LIS 2004: Internet for College Research.

Libraries

The following table provides an overview for 2014-2015 fiscal year of Library Services.

Books	Lee	Collier	Charlotte	Hendry/Glades	Total
Reference	1,498	643	733	52	2,926
Circulation	42,242	7,179	7,587	1,419	58,427
E-Books	Student Online Access				163,580
Total	43,740	7,822	8,320	1,471	224,933
Periodicals	Lee	Collier	Charlotte	Hendry/Glades	Total
In Print	42	17	67	1	127
Non-Print Resources	Lee	Collier	Charlotte	Hendry/Glades	Total
Electronic Databases: Journals/Magazines/Newspapers	Student Online Access				172
Streaming Videos					33,762
DVD's	2,859	401	511	280	4,051
Kindles/ E-Readers	21	3	5	12	41
Anatomical Models	37	11	25	0	73
Total	2,917	415	541	292	38,099
Internet Computers	Lee	Collier	Charlotte	Hendry/Glades	Total
Main Floor (Student Use)	87	40	75	3	205
Computer Lab (Instructional and Student Use)	32	0	0	0	32
Library WEPA Stations	2	2	2	1	7
Instruction Use Computers	3	0	1	0	4
Staff/Faculty Computers	19	6	8	2	35
PAC Terminals	5	0	0	0	5
Total	148	48	86	6	288
Staff	Lee	Collier	Charlotte	Hendry/Glades	Total
Professional Staff	6.5	1.5	1.5	1	10.5
Support Staff	4.5	4	3	0.5	12
Total	11	5.5	4.5	1.5	22.5

Published by the Office of Institutional Research
Florida SouthWestern State College