

Foreign Language Assessment Report

Summer 2020

Author: Joseph F. van Gaalen, Ph.D., Asst. VP, Institutional Research, Assessment, & Effectiveness

1 INTRODUCTION

Florida SouthWestern's Foreign Language Department employs a common course assessment to measure student progress in course level objectives, a practice shown to be effective in establishing data driven instruction (Hall, 2010). Courses included in assessment are: FRE 1120 *Elementary French I*, FRE 1121 *Elementary French II*, SPN 1120 *Beginning Spanish I*, and SPN 1121 *Beginning Spanish II*. Through achievement of the courses students will acquire and demonstrate competency in speaking, writing, reading comprehension and listening comprehension in standard Spanish or French at the beginner's level. The assessment outcomes outlined below define the method of assessment for each course assessment as well as measure current Student Learning Outcomes (SLOs) and identify areas for future SLOs to be assessed. Additionally, the plan provides information on achievement levels of dual enrollment (concurrent) artifacts compared with traditional, as well as online artifacts compared with traditional artifacts as highlighted in the course level assessment plan. This report provides achievement analysis for both summer 2020 as well as longitudinal studies, where applicable.

For additional detail or further analysis not provided in this report, please contact Dr. Joseph F. van Gaalen, Asst. VP, Institutional Research, Assessment, & Effectiveness (jfvangaalen@fsw.edu; x16965).

2 FRENCH

2.1 FRE 1120

No assessment for FRE 1120 is run during summer terms.

2.2 FRE 1121

No assessment for FRE 1121 is run during summer terms.

3 SPANISH

3.1 SPN 1120

3.1.1 Descriptive Statistics, Learning Outcomes, and Learning Objectives

During the summer 2020 semester 7 sections of SPN 1120 Beginning Spanish I were offered. Of those, artifacts from a common final were collected from 7 sections. A total of 121 students were enrolled in SPN 1120. Of those, 82 artifacts were collected representing a sample size of 68% of the population.

Using a common course assessment, the FSW Spanish faculty defined three areas of interest for evaluation that apply to SPN 1120. The Student Learning Outcomes (SLOs) and their objectives or measures of success are:

- SLO 1: Students will be able to understand spoken Spanish. The faculty established measure of success for this SLO is for 80% of students to demonstrate competency with a score of 70% or better in the oral comprehension exam sections (Section I).
- SLO 2: Students will be able to understand written Spanish. The faculty established measure of success for this SLO is for 80% of students to demonstrate competency with a score of 70% or better in the reading comprehension exam sections (Section II and III).
- SLO 3: Students will be able to write effectively in the Spanish language. The faculty established measure of success for this SLO is for 80% of students to demonstrate competency with a score of 70% or better in the writing competency exam sections (Section IV and V).

The faculty established measure of success for SLO 1, 80% of students scoring 70% or higher in Section I, was nearly met as results exhibit 61% of artifacts score 70% or higher in the oral competency exam section (Section I) (Table 1). The faculty established measure of success for SLO 2, 80% of students scoring 70% or higher in Sections II and III, was nearly met. Results exhibit 49% of artifacts scored 70% or higher in Section II and 76% of artifacts scored 70% or higher in Section III. The faculty established measure of success for SLO 3, 80% of students scoring 70% or higher in Sections IV and V, was partially met. Results exhibit 50% of artifacts scored 70% or higher in Section IV and 84% of artifacts scored 70% or higher in Section V. For a graphical representation of SLO achievement, see Figure 1.

n = 82	Section I (Oral)	Section II (Reading)	Section III (Reading)	Section IV (Written)	Section V (Written)	Combined (Overall)
Goal	80% of artifacts scored $\geq 70\%$ for all sections					
% above 70%	61%	49%	76%	50%	84%	
Mean (as %)	73%	63%	79%	67%	81%	
Median (as %)	77%	67%	82%	70%	85%	
Section Score Max	15	60	15	15	20	125
Section Mean	11.0	37.8	11.8	10.0	16.1	86.8
Section Median	12	40.31	12.25	10.5	17	90

Table 1. Percentage of student achievement level as per SLOs (SPN 1120).

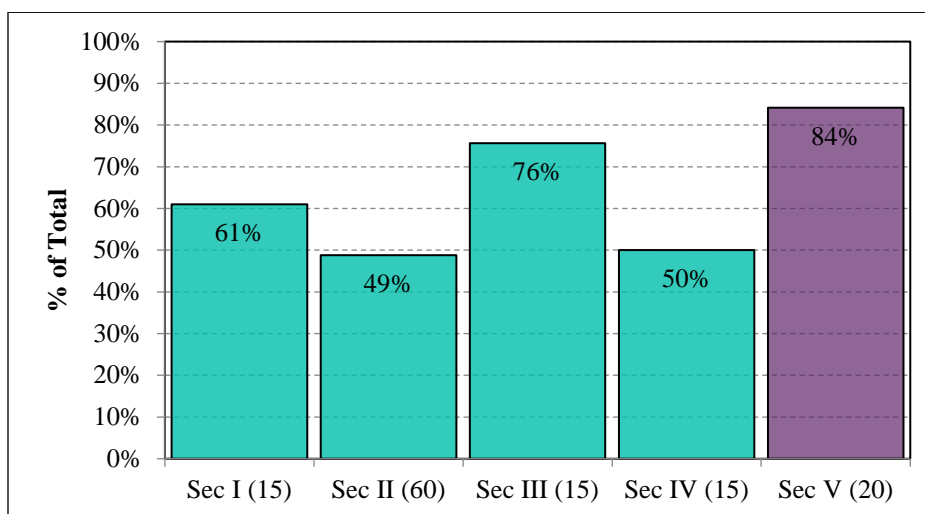


Figure 1. SLO achievement for SPN 1120 by exam section (Percentage of student achievement level as per SLOs). Purple denotes having met objective.

3.1.2 Exploratory Analysis & Significance Testing

Multiple comparisons of artifact scores across varying formats, campuses, and student types were made to more thoroughly detail the assessment data. Each course was divided into appropriate subgroups such as by campus or enrollment status to perform the analysis. Where possible, additional methods of analysis were conducted to provide a broader picture of these comparisons.

3.1.2.1 Dual Enrollment (Concurrent) to Non-Dual Enrollment Comparison

No dual enrollment (concurrent) sections of the course were run during summer 2020 so no comparison study between dual enrollment and traditional courses could be completed.

3.1.2.2 Online to Traditional Comparison

All sections offered in summer 2020 were online due to the global pandemic. As a result, no comparison of online to traditional could be completed.

3.1.2.3 Comparison by Campus/Site

All sections offered in summer 2020 were online due to the global pandemic. As a result, no comparison of sites could be completed.

3.1.3 Data Distribution & Longitudinal Study

3.1.3.1 Data Distribution

A histogram depicting the distribution of scores across each exam section is shown in Figure 2. All sections exhibit peaks above 90% with the exception of Section II, which peaks at both 30-39% and 8-89%. Section II also continues to exhibit more widely distributed scores.

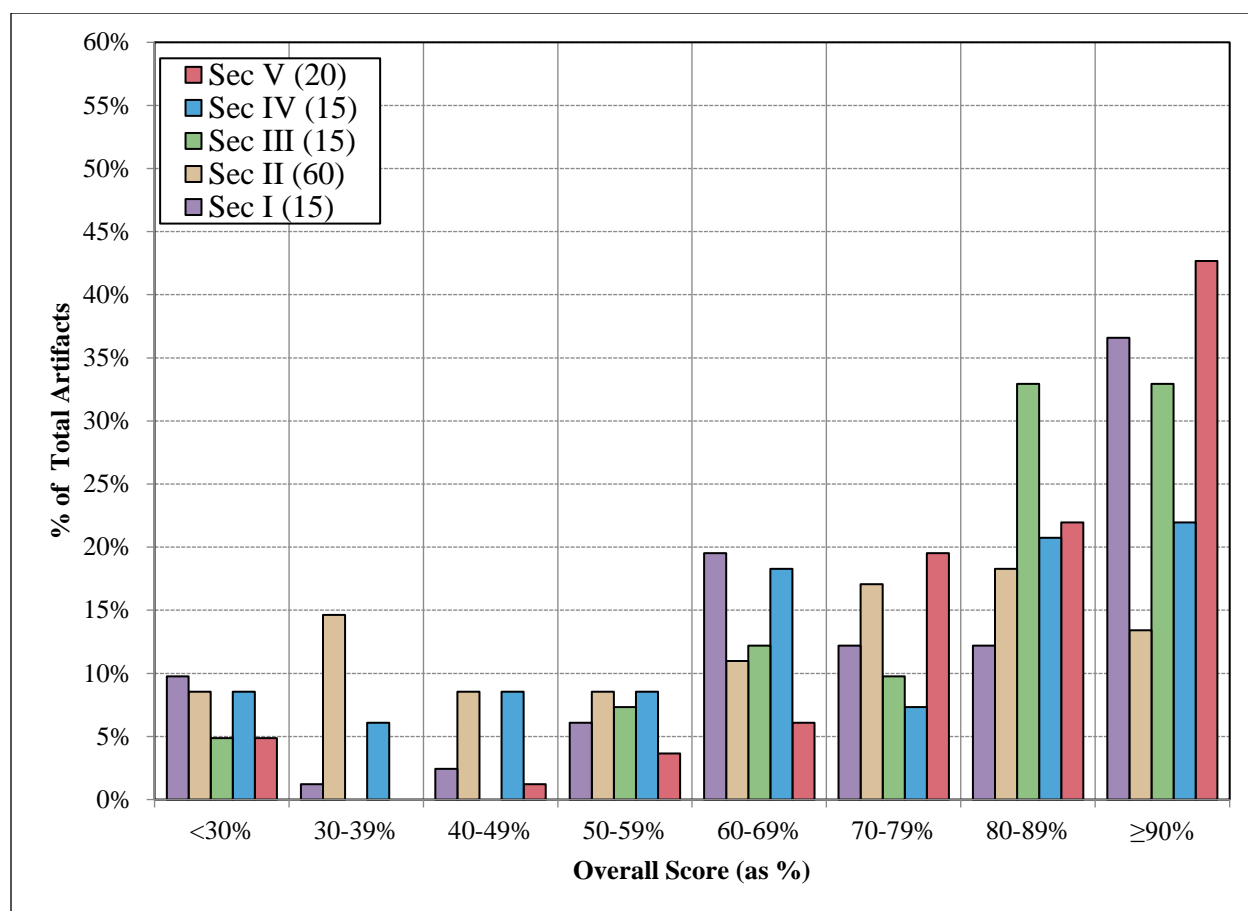


Figure 2. Histogram of SPN 1120 exam sections scores for summer 2020. Purple – Section I, Brown – Section II, Green – Section III, Blue – Section IV, and Red – Section V.

To describe the behavior of the section scores based on overall achievement, a color map, or binary raster image, is typically created, however due to sample size, this analysis would not be practical.

3.1.3.2 Longitudinal Study

Further description of achievement over time in for summer terms is provided in Table 2. Both demographics of students and student count vary by semester it may be more reasonable to compare like semesters (Fall vs. Fall, Spring vs. Spring) (see <http://www.fsw.edu/facultystaff/assessment/history> for further details). Among the four summer terms on records, the sections (I-V) of Summer 2020 rank 4th, 4th, 4th, 4th, and 4th.

	<i>Section Max</i>	Summer 2017 n=55	Summer 2018 n=55	Summer 2019 n=76	Summer 2020 n=82
Section I (Oral)	15	11.5	11.9	11.7	11.0
Section II (Reading)	60	40.4	42.1	39.1	37.8
Section III (Reading)	15	12.3	12.8	12.8	11.8
Section IV (Written)	15	11.1	12.1	10.9	10.0
Section V (Written)	20	15.4	16.3	16.3	16.1
Combined (Overall)	125	90.8	95.3	96.1	86.8

Table 2. Comparison of mean scores for SPN 1120 for summer terms.

3.2 SPN 1121

3.2.1 Descriptive Statistics, Learning Outcomes, and Learning Objectives

Four sections of SPN 1121 Beginning Spanish II were offered in summer 2020. Of those, artifacts were collected from a common final from 4 of 4 sections. A total of 55 students were enrolled in SPN 1121. Of those, 40 artifacts were collected representing a sample size of 73%.

Using a common course assessment, the FSW Spanish faculty defined the same three areas of interest for evaluation that apply to SPN 1121 as those used for SPN 1120. For details on each SLO, see 3.1.1. The only difference between SPN 1121 and SPN 1120 in terms of measuring these outcomes is that the exam sections differ slightly and are noted in Table 3 below.

The faculty established measure of success for SLO 1, 80% of students scoring 70% or higher in Section I, was nearly met as results exhibit 78% of artifacts score 70% or higher in the oral competency exam section (Section I) (Table 3, Figure 3). The faculty established measure of success for SLO 2, 80% of students scoring 70% or higher in reading only sections, Sections II, and VI, was nearly met. Results exhibit 30% of artifacts scored 70% or higher in Section II and 60% of artifacts scored 70% or higher in Section VI. The faculty established measure of success for SLO 3, 80% of students scoring 70% or higher in writing only sections, Sections V and VII, was nearly met. Results exhibit 63% of artifacts scored 70% or higher in Section V and 60% of artifacts scored 80% or higher in Section VII.

n = 40	Section I (Oral)	Section II (Reading)	Section III (Read/ Write)	Section IV (Read/ Write)	Section V (Writing)	Section VI (Reading)	Section VII (Writing)	Combined (Overall)
Goal	80% of artifacts scored $\geq 70\%$ for all sections							
% above Goal	78%	30%	53%	83%	63%	60%	80%	
Mean (as %)	82%	56%	68%	81%	75%	66%	80%	
Median (as %)	87%	55%	71%	86%	83%	87%	100%	
Section Score Max Possible	15	15	40	15	12	15	20	132
Section Mean	12.3	8.3	27.0	12.2	8.9	10.0	16.1	94.8
Section Median	13	8.25	28.5	12.8	10	13	20	96.5

Table 3. Percentage of student achievement level as per SLOs (SPN 1121).

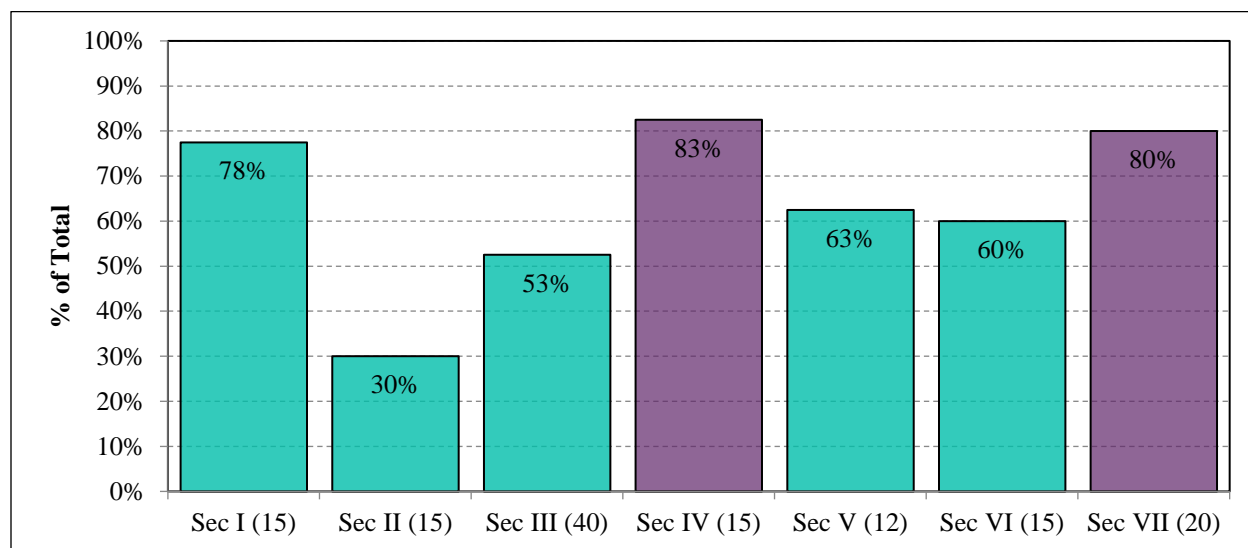


Figure 3. SLO achievement for SPN 1121 by exam section (Percentage of student achievement level as per SLOs). Purple denotes having met objective.

3.2.2 Exploratory Analysis & Significance Testing

Multiple comparisons of artifact scores across varying formats, campuses, and student types were made, where possible, in order to add depth to the causes of the distribution of the artifacts. Each course was divided into the appropriate subgroups to perform the analysis. In cases where a subgroup is not represented in the course comparisons were not conducted and are noted for comprehensiveness.

3.2.2.1 Dual Enrollment (Concurrent) to Non-Dual Enrollment Comparison

No dual enrollment (concurrent) sections of the course were run during summer 2020 so no comparison study between dual enrollment and traditional courses could be completed.

3.2.2.2 Online to Traditional Comparison

All sections offered in summer 2020 were online due to the global pandemic. As a result, no comparison of online to traditional could be completed.

3.2.2.3 Comparison by Campus/Site

All sections offered in summer 2020 were online due to the global pandemic. As a result, no comparison of sites could be completed.

3.2.3 Data Distribution & Longitudinal Study

3.2.3.1 Data Distribution

A histogram depicting the distribution of scores across each exam section is shown in Figure 5. All sections exhibit peaks centered on $\geq 90\%$ except Section II and III. Section II exhibits peaks at 50-59% and a secondary peak at $< 30\%$. Section III exhibits a peak at 80-89%.

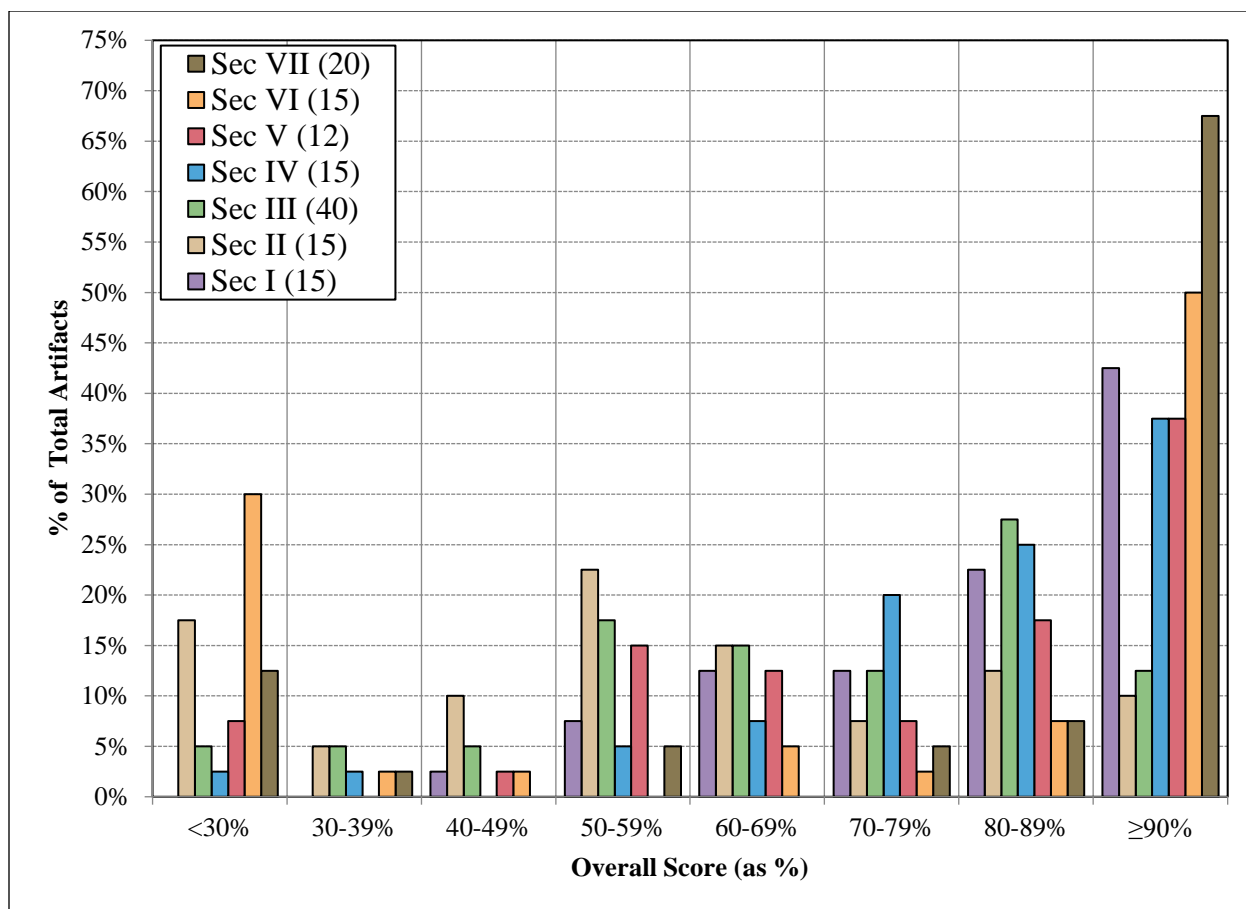


Figure 4. Histogram of SPN 1121 exam sections scores for summer 2020. Purple – Section I, Brown – Section II, Green – Section III, Blue – Section IV, Red – Section V, Orange – Section VI, and Black – Section VII.

To describe the behavior of the section scores based on overall achievement, a color map, or binary raster image, is typically created, however due to sample size, this analysis would not be practical.

3.2.3.2 Longitudinal Study

Further description of achievement over time in SPN 1121 is provided in Table 8). Both demographics of students and student count vary by semester. It may be more reasonable to compare like semesters (Fall vs. Fall, Spring vs. Spring). (see <http://www.fsw.edu/facultystaff/assessment/history> for further details). Among the four summer terms on records, the sections (I-VII) of Summer 2020 rank 3rd, 4th, 4th, 1st, 3rd, 4th, and 4th.

	Section Max	Summer 2017 n=57	Summer 2018 n=38	Summer 2019 n=58	Summer 2020 n=40
Section I (Oral)	15	12.6	12.8	12.2	12.3
Section II (Reading)	15	9.4	9.6	10.2	8.3
Section III (Read/Write)	40	28.5	32.9	31.8	27.0
Section IV (Read/Write)	15	12.2	12.1	11.8	12.2
Section V (Writing)	12	8.8	9.8	9.8	8.9
Section VI (Reading)	15	11.3	12.1	11.3	10.0
Section VII (Writing)	20	16.8	17.8	17.7	16.1
Combined (Overall)	132	99.5	107.1	107.1	94.8

Table 4. Comparison of mean scores for SPN 1121 for summer terms.

4 CONCLUSIONS

Florida SouthWestern's Foreign Language Department employs a common course assessment in both French and Spanish courses to measure student progress in course level objectives in an effort to improve instruction. What follows is a drilldown of findings for both disciplines (French and Spanish) for the summer 2020 assessment.

4.1 FRENCH

A drill-down of FRE 1120 results are as follows:

1. No assessment for FRE 1120 is run during summer terms.

A drill-down of FRE 1121 results are as follows:

1. No assessment for FRE 1121 is run during summer terms.

4.2 SPANISH

A drill-down of SPN 1120 results are as follows:

1. Achievement of 80% of artifacts scoring 70% or better (SLO 1): Achievement was nearly met as results exhibit 61% of artifacts score 70% or higher in the oral competency exam section (Section I).
2. Achievement of 80% of artifacts scoring 70% or better (SLO 2): Achievement was nearly met. Results exhibit 49% of artifacts scored 70% or higher in Section II and 76% of artifacts scored 70% or higher in Section III.
3. Achievement of 80% of artifacts scoring 70% or better (SLO 3): Achievement was partially met. Results exhibit 50% of artifacts scored 70% or higher in Section IV and 84% of artifacts scored 70% or higher in Section V.
4. No dual enrollment (concurrent) sections of the course were run during summer 2020 so no comparison study between dual enrollment and traditional courses could be completed.
5. All sections offered in summer 2020 were online due to the global pandemic. As a result, no comparison of online to traditional could be completed.
6. All sections offered in summer 2020 were online due to the global pandemic. As a result, no comparison of sites could be completed.
7. In a study of score distribution by section, all sections exhibit peaks above 90% with the exception of Section II, which peaks at both 30-39% and 8-89%. Section II also continues to exhibit more widely distributed scores.
8. In a longitudinal study of data distribution through summer terms, among the three summer terms on records, the sections (I-V) of Summer 2020 rank 4th, 4th, 4th, 4th, and 4th.

A drill-down of SPN 1121 results are as follows:

1. Achievement of 80% of artifacts scoring 70% or better (SLO 1): Achievement was nearly met as results exhibit 78% of artifacts score 70% or higher in the oral competency exam section (Section I).
2. Achievement of 80% of artifacts scoring 70% or better (SLO 2): Achievement was nearly met. Results exhibit 30% of artifacts scored 70% or higher in Section II and 60% of artifacts scored 70% or higher in Section VI.

3. Achievement of 80% of artifacts scoring 70% or better (SLO 3): Achievement was nearly met. Results exhibit 63% of artifacts scored 70% or higher in Section V and 60% of artifacts scored 80% or higher in Section VII.
4. No dual enrollment (concurrent) sections of the course were run during summer 2020 so no comparison study between dual enrollment and traditional courses could be completed.
5. All sections offered in summer 2020 were online due to the global pandemic. As a result, no comparison of online to traditional could be completed.
6. All sections offered in summer 2020 were online due to the global pandemic. As a result, no comparison of sites could be completed.
7. In a study of score distribution by section, all sections exhibit peaks centered on $\geq 90\%$ except Section II and III. Section II exhibits peaks at 50-59% and a secondary peak at $< 30\%$. Section III exhibits a peak at 80-89%.
8. In a longitudinal study of data distribution through summer terms, among the three summer terms on records, the sections (I-VII) of Summer 2020 rank 3rd, 4th, 4th, 1st, 3rd, 4th, and 4th.

5 REFERENCES

- Cohen, J. 1988. Statistical power analysis for the behavioral sciences (2nd ed.). Lawrence Earlbaum Associates, Hillsdale, NJ.
- Davis, J.C. 1973. Statistics and Data Analysis in Geology. John Wiley & Sons, New York, New York, 564 pp.
- Hall, J.C. 2010. Doing More with Less: Making Colleges Work Better. Springer, New York, New York, 250 pp.
- Lipsey, M.W. and Wilson, D.B. 1993. The efficacy of psychological, educational, and behavioral treatment: Confirmation from meta-analysis. *American Psychologist*, 48, 1181-1209.
- McDonald, J.H. 2009. Handbook of Biological Statistics (2nd ed.). Sparky House Publishing, Baltimore, Maryland.
- Rosenthal, R. and Rosnow, R.L. 1991. Essentials of behavioral research: Methods and data analysis (2nd ed.). McGraw Hill, New York, NY.
- Starkweather, J. D. 2010. Introduction to Statistics for the Social Sciences. In: Research and Statistical Support. Retrieved from http://www.unt.edu/rss/class/Jon/ISSS_SC/.
- Wilkinson, L. 1999. APA Task Force on Statistical Inference. Statistical Methods in Psychology Journals: Guidelines and Explanations. *American Psychologist* 54 (8), 594–604.